

Experience The Difference
...Page 6



Scala lone contender in Ward 5

JORDAN H. GREEN
Correspondent

Judy Scala is running for a second term on council in November's municipal election.

The Ward 5 Whitchurch-Stouffville councillor filed the official papers in June. Currently no one has challenged the incumbent.

"I focused on three areas, one being youth," said Scala of her current term on council. "I organized the youth center, turned it into a club for them."

Scala has also been the council's liaison between youth groups and politicians and is on the mayor's youth committee.

Another area the councillor has focused on is Stouffville's downtown.

"I'm very adamant about getting our downtown turned around, a lot has to be done," she said.

Scala is a co-chair of the Secondary Plan Advisory Board — a board which will determine Stouffville's social and economic makeup until the year 2021.

"I do (support the current plan) with a few changes," said Scala. "I think the zoning with the Stouffville Country Market needs to be looked at."

Another issue heating up the election races concerns whether local tax dollars should be used to build a new town hall at an estimated cost of \$3.4 million or should the current one be repaired at a cost of \$700,000.

"I firmly believe we should build a second floor over the library," said Scala. "If we put everyone on the second floor, the library gets its addition and we save money."

A resident of Stouffville for 10 years, Scala has two daughters and has been married for more than 24 years.

She has also been active on the BIA, the Balantrae Community Centre committee and she's an advisor in the parks and recreation department.

Although the deadline for filing for the municipal elections isn't until October, there are candidates running in all of Stouffville's six wards.

ADVERTISEMENT

YOU'LL LOVE AUGUST LOBSTERFEST

When the Corner House in Stouffville opened eleven years ago, lovers of fine food were quick to appreciate their innovative menus and meticulous attention to quality and detail.

In addition to regular menu items, the Corner House also features special events throughout the year. "We've been doing a Lobster Fest in June, July and August since we opened and it's been our most popular special event," says Manager Jennifer Pennanen.

As always, live lobsters will be flown in from the east coast for the next festival, which runs August 19 - August 24th and for which reservations are strongly recommended. "We sold about 200 lobsters at the last event, in addition to our regular menu items.

This is something a lot of people seem to enjoy - they particularly like the fact that it's flown in fresh and cooked here.

"We cook it four different ways, steamed, broiled or in one of two sauces,

Lobster Bonne Femme and Lobster Thermidor." The restaurant also features periodic special events with the emphasis on international specialties including Italian, Cajun, Jamaican and Indian cuisine.

An Elizabethan feast, which is held each fall, attracts clients from a wide area. Outdoor barbecues are another customer favorite, and Pennanen and her staff once again barbecued a giant hip of beef during this year's Strawberry Festival. "The quality of food here is always well above average and our prices are reasonable," Pennanen said.

"We have a fully stocked bar and a good selection of wines from different countries and we've just redecorated and renovated the restaurant." Rich hues of blue and plum lend a touch of European sophistication to the ambiance, without detracting from the restaurant's country house charm.

The upper level features framed posters of jazz greats, while original paintings by area artists are displayed on the walls downstairs. "We're featuring different artists every couple of months and the paintings are for sale." Pennanen is an attentive and genial host, stopping at each table to chat to her guests, ensuring that everything is to their liking and exchanging friendly banter. "I try to make it feel as comfortable as I can, because I want everyone to come back again."

To make reservations for the Lobster Festival, call 640-8494.



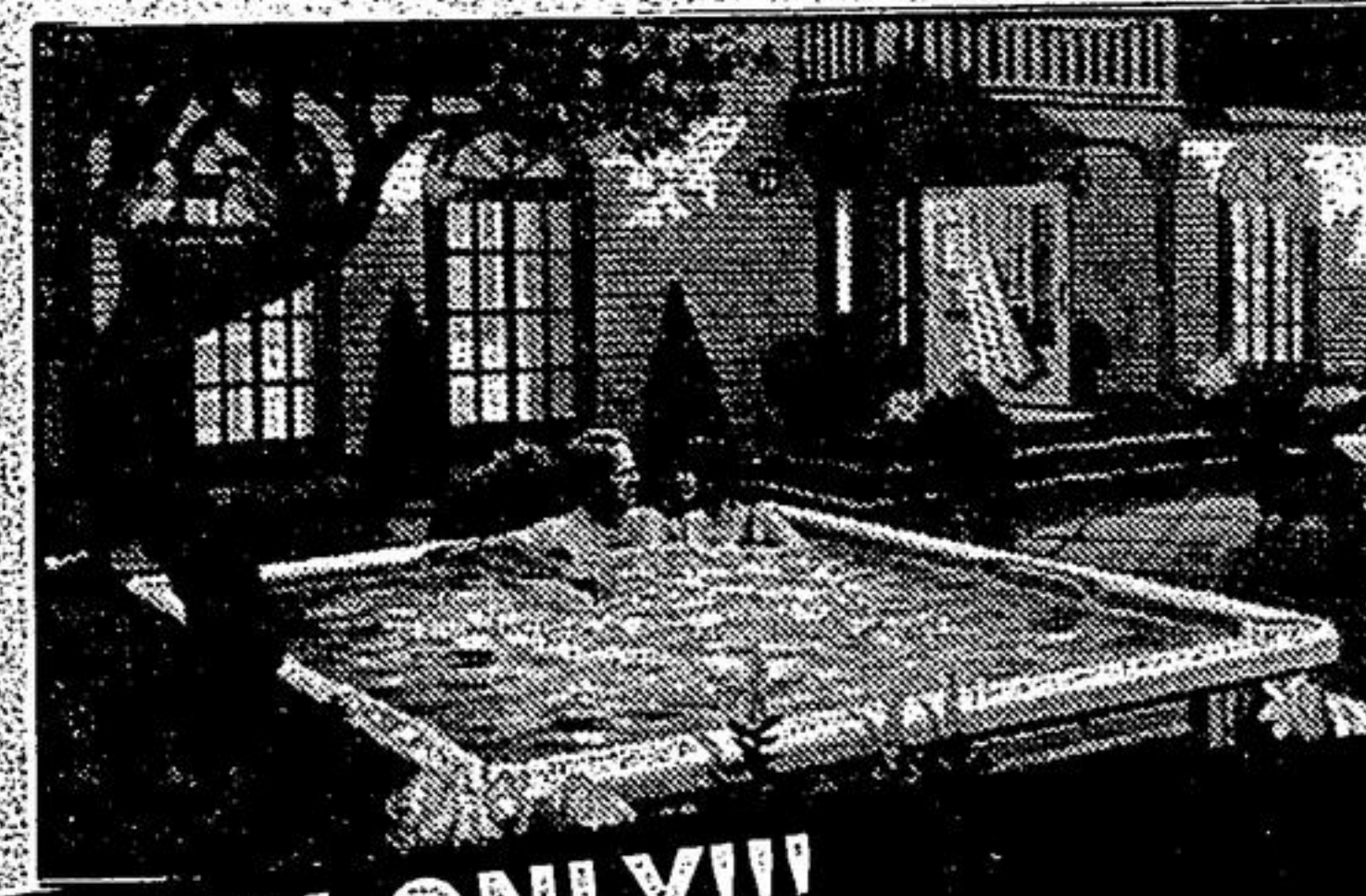
Manager Jennifer Pennanen shows off one of the wine features of the Corner House. Photo: SJOERD WITTEVEEN

IT'S A WAR OUT THERE...



SO, RELAX IN THE COMFORT OF YOUR BACKYARD IN A BEACHCOMBER HOT TUB!

Using your own private Beachcomber Hot Tub in your backyard is like having a vacation every day! For the cost of just one traditional vacation, you can holiday at home year round! No bags, no tickets, no crowds, just warm, soothing water. Melt away the stress of the day with a new Beachcomber Hot Tub!



FOR THIS MONTH ONLY!!!
EXTRA VALUE PACKAGE INCLUDED,
IMMEDIATE DELIVERY, NO MONEY DOWN
Use Beachcomber Preferred Client Card O.A.C.



YOUR ROUTE TO SAVINGS
MARKVILLE MALL
THE BAY
NORTH HERITAGE
SEAWAY POOLS
HWY. #7

SEAWAY
POOLS • SPAS • BILLIARDS

25 HERITAGE RD., 1 NORTH OF HWY. 7
AT MCCOWAN, MARKHAM **294-8030**

1997 TAURUS GL AND 1997 EXPLORER XLS AT SPECIAL SALE PRICES FROM McARTHUR FORD - YOUR LOCAL FORD DEALER SINCE 1971



1.9% APR. 48 MTH FINANCING OR
CASH \$19,995*
PRICE
OR
24 MONTH PLAN FOR \$239*
OR
ADVANCE PLAN FOR \$8,692*

161A PACKAGE INCL. 3.0L V6, AUTO O/D, SPEED CONTROL, TILT STEERING, HEATED POWER MIRRORS, AM/FM CASSETTE, POWER DOOR LOCKS, POWER WINDOWS, LIGHT GROUP, ANTI-LOCK BRAKES AND MORE.



686A PACKAGE INCLUDING V6, AUTO O/D, SPEED CONTROL, TILT STEERING, AM/FM CASSETTE, LUGGAGE RACK, PRIVACY GLASS, BODY SIDE MOULDINGS, P235/75R15 OWL A/T TIRES, POWER GROUP, CAST WHEELS, SPORT BUCKET SEATS, 4 WHEEL ABS AND MORE.

CASH \$31,595*
PRICE
OR
24 MONTH PLAN FOR \$376*
OR
ADVANCE PLAN FOR \$11,509*



EXPLORER XLS

McARTHUR FORD
KENNEDY RD. JUST SOUTH OF HWY. #7

(905) 474-1350

*Purchase prices are plus freight and all taxes, with cash rebate already deducted. 24 month plan payments are plus taxes, based on a downpayment or equivalent trade of \$2,990. Freight, air tax, admin, PPSA, gas tax and license are extra. Plan payments are based on 36,000 KM red carpet lease to qualified retail lessees, O.A.C. Advance 24 month plan payment is plus taxes, admin, PPSA, gas tax and license. Cash rebates and low rate 1.9% apr. financing are not combinable.