

FARQUHARSON'S FEATURE HOMES



Mona Farquharson
Broker/Manager

905-640-4151



Dan Farquharson
Broker

Exceptional Value, Quality & Design



Imagine your own private hideaway on 25 acres. Enter through formal gates on a paved driveway, through a charming covered bridge, over a spring-fed stream, past tropical gardens to this spectacular 6300 sq. ft. custom villa. Large sculpted wooden doors invite you into a grand foyer, gourmet stained glass kitchen with a sun-drenched breakfast nook, and plant paradise room. The family room features a custom built in bar, magnificent fireplace and oak plank flooring, 2 pc. with gold plated fixtures, 4 bedrooms plus a separate nanny or teens quarters. The magnificent master suite, features a marble ensuite, his and her dressing areas, office or library and a large private deck with sunset views. To top this all off, this exceptional villa features a heated gunite INDOOR pool by Bona Vista with a Dry-a-tron humidity control system. The land is suitable for horses, walking trails and fishing, is well situated and an easy commute to the 404 and yet affords the relaxed feeling of total privacy and comfort.



***Offered way below owner's cost at \$569,000**

***Owners have bought - MUST BE SOLD**

For a personal inspection call Dan or Mona 905-640-4151

Specializing in the sale of Country Estate Properties Farquharson Realty #1 in units SOLD & total volume in N13-1st 4 months of 1997

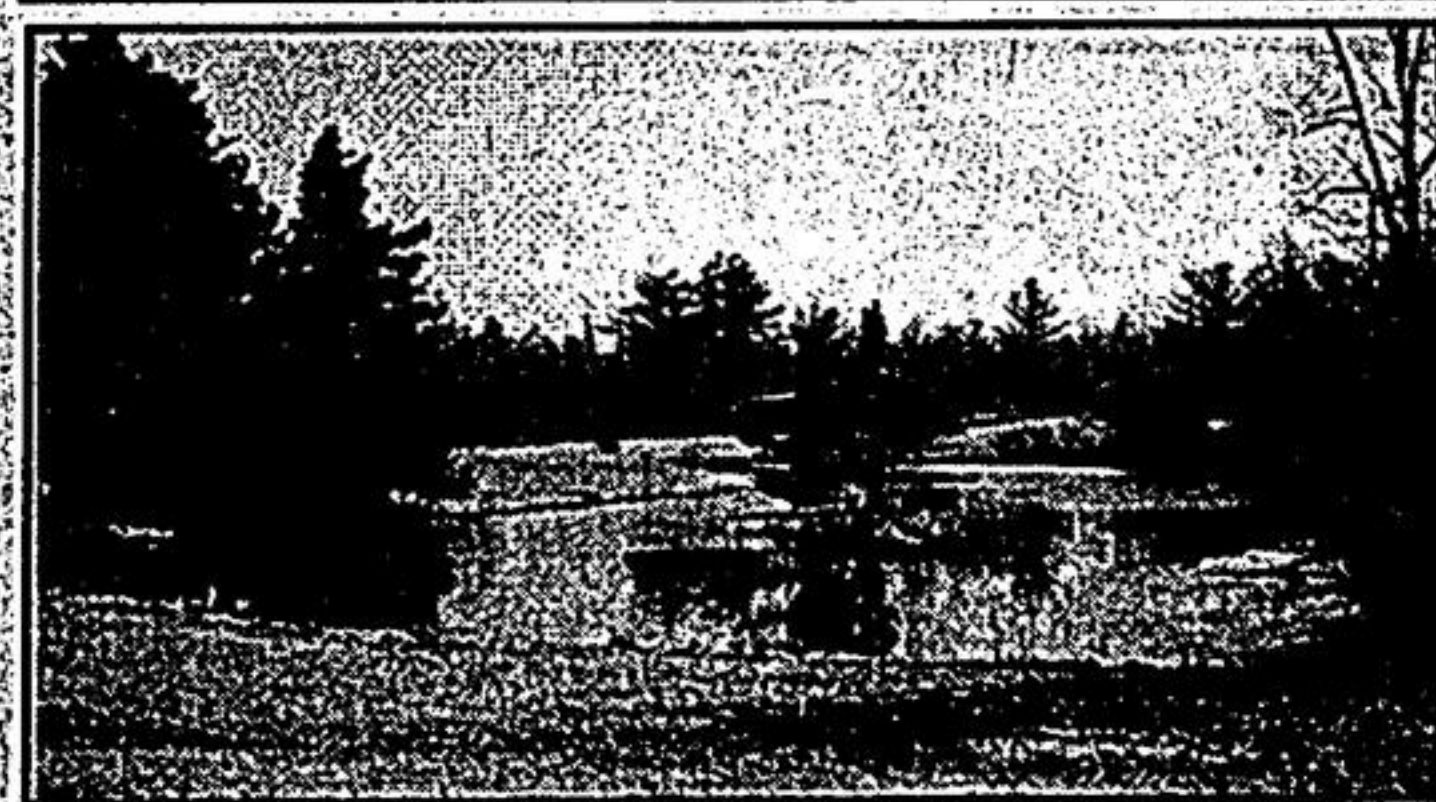
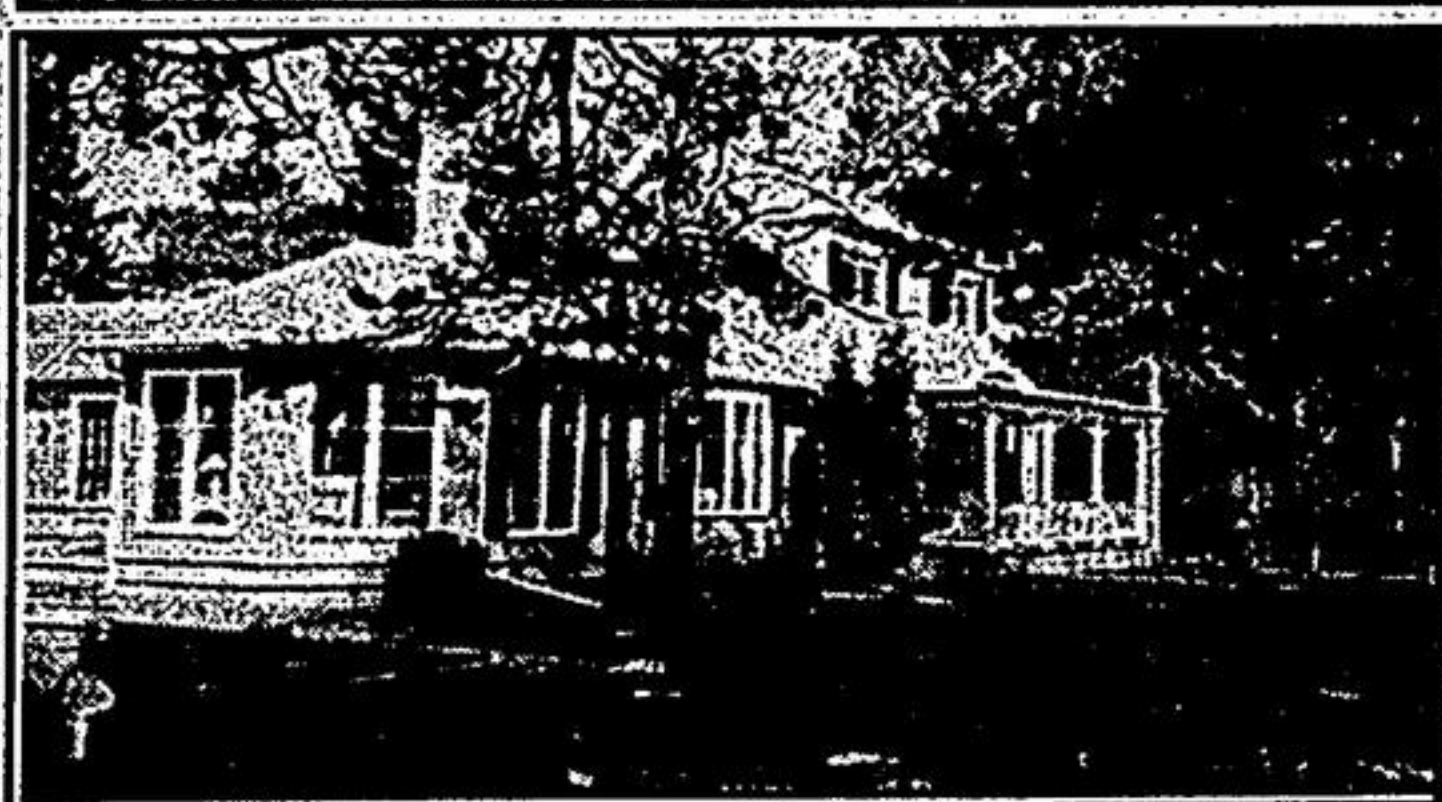
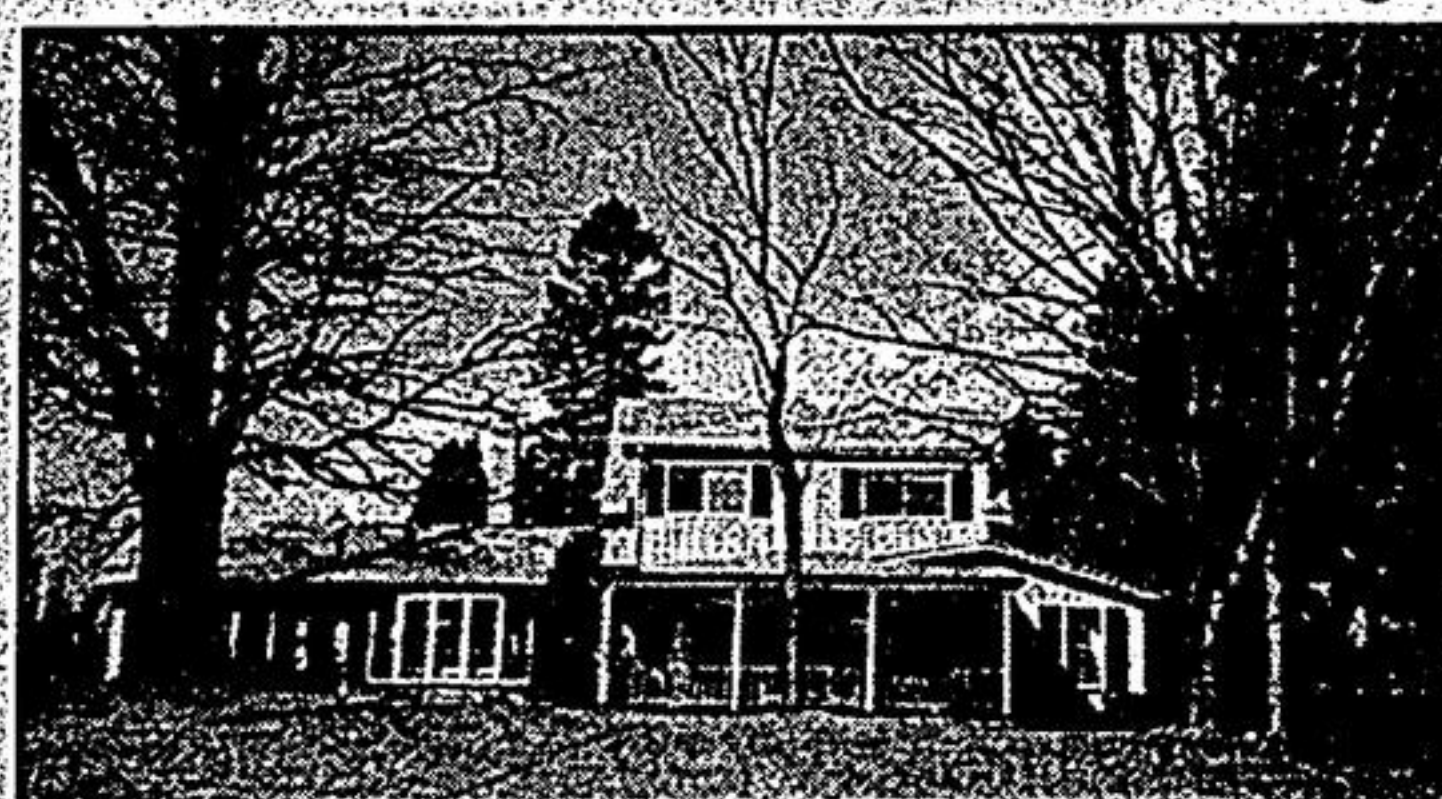


Dan Farquharson
Broker



Mona Farquharson
Broker/Manager

"COUNTRY CHARMER"



Preferred location near Aurora. Fabulous rolling 18 acres with large spring fed pond and river. Wonderful wildlife. **Residence** "Steve McCassey" design. 4 bedrooms, hardwood floors, 5 stall barn and 3 paddocks. Inground pool. **\$599,000.**

Farquharson Realty Ltd. has been "out" - selling! - "outstanding" properties in Markham, Whitchurch/Stouffville, Uxbridge and surrounding areas for over 40 years.

Farquharson Realty Ltd. 905-640-4151



Bill & Heidi Morrison
Associate Brokers

The "Twosome"
That Gets Results!
President's Council Award 1992-1996

Re/Max Scugog
Realty Ltd.

"ONE-OF-A-KIND" PERMANENT RESIDENCE OR PRIVATE COUNTRY RETREAT!!!



- Unique custom reproduction on exquisite 2 acre wood lot just minutes north of Port Perry
- Magazine quality home with lots of character (approx. 3000 sq. ft.) built in 1996
- Interlock walkways, detached garage, natural wood trim, 9" baseboards, 10 ft. ceilings throughout
- Dining room has 20 ft. barrel vaulted ceiling
- Wrap-around porch & deck
- Truly a "must see!!" property

To view this property call Bill* or Heidi* Morrison @ 852-6143, \$299,000.



To view this property call Bill or Heidi at 905-852-6143, Toronto Line 905-649-1761

We advertise in Markham, Unionville, Scarborough and York Region - Why not give us a call for "your" real estate needs