

# July

# Wheels

## Regular maintenance on vehicle helps it to last longer

LISA CARTWRIGHT  
Features

If you want your vehicle to last, it is important to do regular maintenance.

"Regular maintenance ... will make your car last longer and will give you less problems down the road," said Tony De Rose of Markham Hyundai.

J.P. Kovac, owner of Kovac Mazda in Markham

agreed.

"If you are putting average kilometres (on your car), you should have a thorough spring and fall inspection. That way you can have (problem-free) driving throughout the season," said Kovac.

The following is a checklist to help you remember what to check and when.

### SAVE A FORTUNE CELEBRATION

- Remote Fuel Filler Door Release
- Remote Control Side View Mirrors
- Intermittent Wipers
- Door Ajar Warning Light
- Folding Rear Seats
- More standard features than any other car in its class!



Thanks to you Sales are up 63.9%

BEST BUY LEASE

FROM \$850 DOWN **\$158<sup>00</sup>\* MO/48 MONTHS  
**Accent L** BUY FROM **\$10,995\*\***  
3 DOOR**



BEST BUY LEASE

FROM \$850 DOWN **\$188<sup>00</sup>\* MO/48 MONTHS  
**Elantra GL** BUY FROM **\$13,995\*\***  
4 DOOR**

- 1.8L Twin Cam 16V Engine
- Power Rack & Pinion Steering
- Intermittent Wipers
- Side Impact Beams
- AM/FM Stereo Cassette with 4 speakers
- More standard features than any other car in its class!

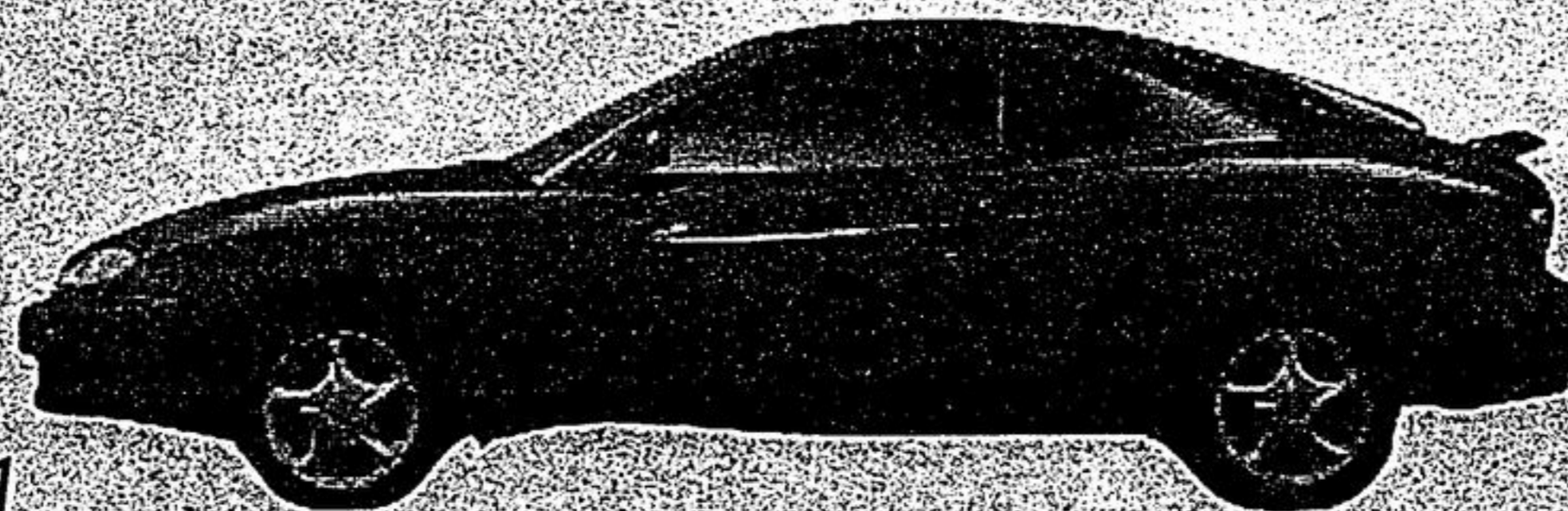
24 HR Roadside Assistance Program

- 4-wheel independent suspension, fine-tuned by Porsche Engineering
- Power steering
- Power windows
- ETR AM/FM Stereo Cassette ... and more!

5 YR 100,000 KM WARRANTY

BEST BUY LEASE

FROM \$1395 DOWN **\$268<sup>00</sup>\* MO/48 MONTHS  
**Tiburon** BUY FROM **\$17,595\*\*****



\*Leasing and financing plans from Hyundai Credit Canada. Limited time only, based on new 1997 Accent L 3-dr MSRP from \$10,995; 1997 Elantra GL sedan MSRP from \$13,995; interest rate 7.3%/7.2%; \$158/\$188 per month for a 48 month walkaway lease. Total lease obligation of \$7,584/\$9,024 O.A.C. and optional purchase price of \$4,753/\$7,034. Down payment or equivalent trade of \$850, plus first monthly payment and security deposit (\$200-\$250) required; 20,000 km mileage allowance per year applies. Additional km charge of \$0.08. \*\*MSRP for 1997 Accent L 3-dr from \$10,995; MSRP for 1997 Elantra GL from \$13,995. All lease and purchase prices exclude freight, license, P.D.S. and taxes.

MARKHAM HYUNDAI

THE NEW HYUNDAI

5829 HIGHWAY 7 EAST

DIV. MARKHAM FINE CARS LTD.



DRIVING IS BELIEVING

905-472-5525

- 10,000 km - rotate tires
- 20,000 km - balance tires
- Once a year - alignment
- The front end is checked to ensure everything is sitting correctly. This allows for better vehicle control and the tires will last longer.
- 24,000 km - brakes
- This should include a thorough check including looking at the calipers, cylinders, fluids and for uneven wear on brake pads and shoes.
- 48,000 km - transmission fluid in an automatic vehicle should be changed
- 96,000 km - transmission fluid in a standard vehicle should be changed
- A general inspection of linkages and a road test should be performed.
- 30,000 km - the fuel injection system should be flushed
- Fall and spring - the air conditioner should be checked
- The air conditioner should be checked at least every spring for leaks and to see what temperature it cools at. The compressor and belt tension should also be checked.
- 24,000 km - fan belts
- The belt tension and belt condition should be checked.
- Spring and fall - the cooling system should be checked
- 48,000 km - the cooling fluids should be changed
- 3,000 - 5,000 km - oil change, lube and filter
- "There is detergent in oil that helps keep (it) clean. If it is not changed ... it stops doing its job," said Doug MacKay, service manager for North Pointe Chev Olds.
- 48,000 km - tune up
- The oil and gas filters and spark plugs should be changed and the timing set.

This information was provided by J.P. Kovac, owner of Kovac Mazda, Doug MacKay, service manager of North Pointe Chev Olds, Tony De Rose of Markham Hyundai and Charlie Chiaramida from Active Green & Ross.

### To lease or not to lease

Four questions to see if you should lease or own

Besides a home, the purchase of an automobile is the largest financial investment a person can make.

And unfortunately, for college students, this is a decision that typically comes immediately after graduation - a time of relative uncertainty and limited cash resources.

Thankfully, there are several car manufacturers that recognize this dilemma and offer special financing assistance specifically aimed at graduating college students.

But choosing between the option to purchase or lease a vehicle is a difficult one.

When you purchase a car, you must pay about 10 per cent of the total cost up front and pay off the remainder over three to six years.

Once you have made all the payments, you own the car.

A lease, however, offers you the advantages of less money down, lower monthly payments and the option to give the car back to the dealer at the end of the lease.

■ Please see page 12 ■

## SUMMER SIZZLE!!



3.9% NO LIMIT FINANCING

LEASE FROM 0.90% 24 MONTHS

Kovac Mazda

PROTEGES, 626'S, MX6'S, TRUCKS

FACTORY REBATES UP TO \$3500

FINANCING & SUN/TRIBUNE THURSDAY/JULY 17, 1997