



Left - The 3,070 square foot Hibiscus starts at \$319,900. It is a four bedroom home with the option of a fifth bedroom. All of the homes can be custom designed so you get everything you want for your dream home (below).



Quality homes in quiet a subdivision

Builder brings knowledge of custom designing to each home in Stouffville

Katherine Crescent residents Rick and Susan Wannop can walk down their street and tell you everyone who is moving into each of the new homes.

What makes the situation different is that the Wannops are the builders of the new subdivision. While Katherine Crescent is Rick's first subdivision, he has been building custom homes since 1978.

In 1989, he bought the property in Stouffville. In November, crews started building the three styles of bungalows and six styles of two-storey homes. Over a dozen have already been sold and a seven are occupied.

And people buy the homes - often

before they have seen them - because of the quality work and custom design, said Susan.

Although in walking distance to downtown Stouffville, the private subdivision, where only 42 homes will be built, is away from the noise of the main street.

The homes are up here on the hill (and clients get a nice view). And since Katherine Crescent is a private development, it will always be quiet.

All homes have an extensive list of standard quality features and sit on 55 or 60 foot lots.

Prices start at \$274,900 for the 2,090 square foot Iris to \$319,900 for the 3,070 square foot Hibiscus.

The Hibiscus

This four-bedroom home is airy because of the many oversized and unique-shaped windows.

An octagon-shaped porch wraps around the front of the home with doors leading to the main entrance and dining room.

Opening the the double leaded glass front doors, you are welcomed by sunlight pouring through the six sets of windows that reach two storeys high.

A dining room is separated from the sunken living room only by wooden banister. The family and breakfast room, with sliding doors that looks into the back yard, attaches to a kitchen. The main level has both a side and garage entrance to the

mud room and laundry area.

Ceramic tile leads you to the kitchen area and the main floor powder room.

Four large bedrooms and a bathroom take up the upper level.

Two French doors swing open to reveal a large master bedroom with a gas fireplace and a huge walkin closet. There is also an ensuite with a whirlpool and shower stall.

Katherine Crescent is on the east side of the 10th line of Stouffville just south of Main Street.

For details call the sales office at **905-642-7042** or drop by Monday to Thursday 1 pm to 5 pm and weekends noon to 5 pm.

DeMarco Homes' newest masterpiece - Wellington Country Estates

You won't want to miss out on DeMarco Homes' newest offerings of one to two acre estate homes in the quiet community of Vandorf, just 10 minutes north of Markham.

This unique site of 10 estate homes (eight of which are on walkout lots) are situated on two quiet cul-de-sacs, with scenic rolling hills. With frontages of up to 200 lineal feet, privacy is guaranteed.

Situated just two minutes from the 404, there are five different designs with two elevations each.

This virtually guarantees each home to be one-of-a-kind, said Maxine Andrews, project manager for DeMarco Homes.

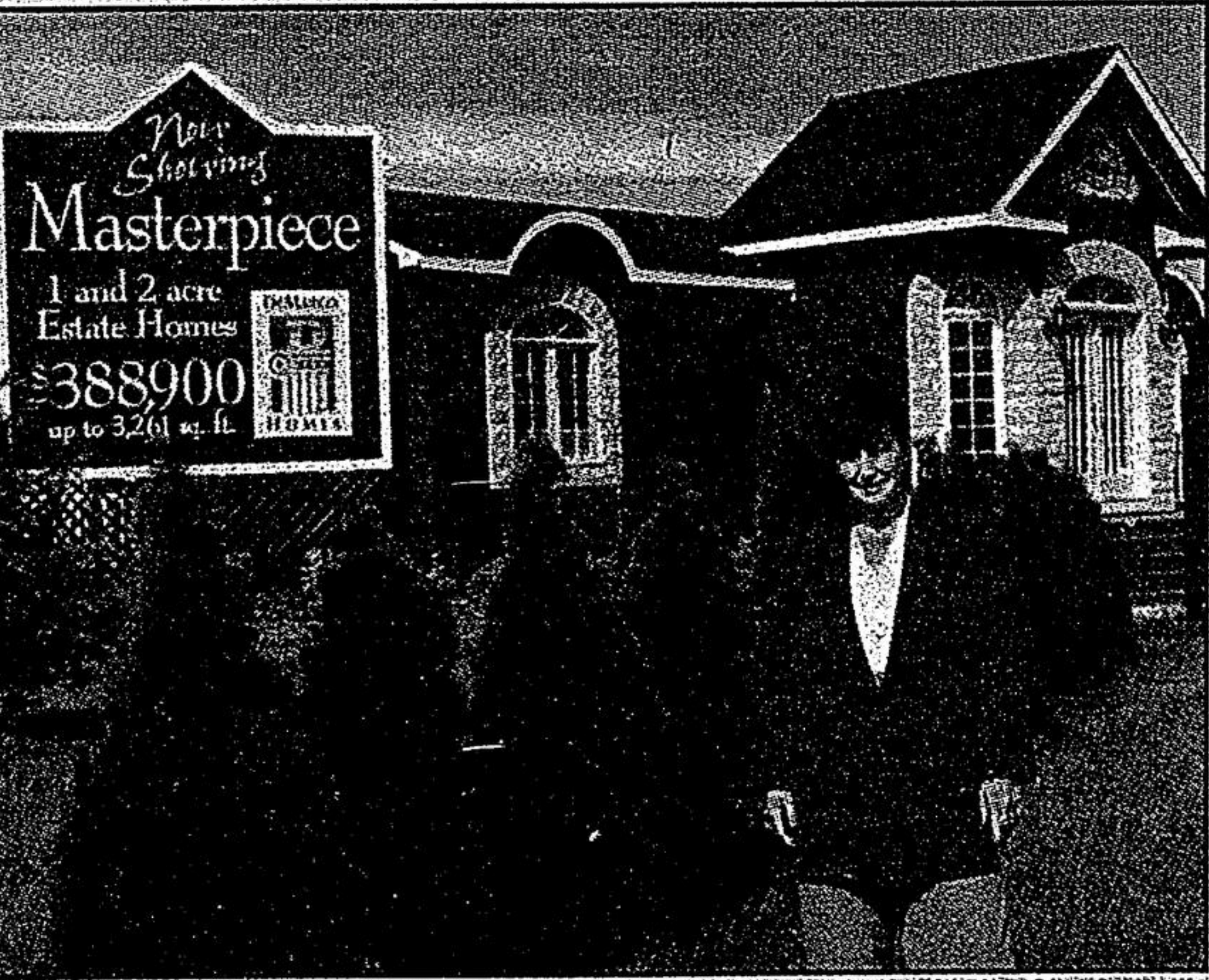
Two sprawling bungalow designs of 2,552 square feet and 2,801 square feet and three spectacular two-storey designs of 2,700, 2,915 and 3,261 square feet allow the most discriminating buyer a varied selection.

To further ensure distinct individuality of design, DeMarco Homes has arranged a consultation package where each purchaser is given the opportunity to meet with their architect, interior designer and landscape technologist prior to the construction on their new home. This way they can discuss how to personalize their home to suit their lifestyle, wants and desires, she said.

Standard luxury features abound in these all clay brick homes that are accented with precast arches, key stones and brick quoining. Some of the architectural details include turrets, all casement, palladium and bay windows, dormers, side garages and private covered front courtyards.

All homes have double door front entrances with glass inserts. The interior features include nine-foot main floor ceiling and cathedral bedroom ceilings that will exceed the buyers' highest expectations, said Andrews.

Using their 50-years of building experience, DeMarco has put together an entertainers' interior dream package that includes upgraded kitchen cabinetry with islands, pantries, raised breakfast bars, telephone desks



Maxine Andrews, project manager for DeMarco Homes, invites everyone to come to Wellington Country Estates located just 10 minutes from Markham.

under counter valance lighting and severy units.

Features common to all homes include an engineered wood silent floor system; natural oak stairs with upgraded spindles and rail; marble gas fireplaces; colonial style baseboard with casing; a choice of imported Italian ceramic tiles and more.

The 2,801 square foot Picasso bungalow elevation "A" design offers a private front courtyard entry area with double, decorative glass front entry doors that open into a grand foyer with a raised ceiling.

Walking through the foyer to the sunken family room affords a dramatic view of the marble gas fireplace constructed between two flanking casement windows.

There is direct access from the family room to the large kitchen and eat-in breakfast room with a walkout to a covered Muskoka porch.

Sunlight pours into this area from sliding glass doors and three large windows. A main floor laundry/mud room with separate broom closet and laundry tub cabinet, offers further storage space and a direct access to the two- or three-car garage.

To the left of the grand foyer is the living room with a cathedral ceiling area with a view of the winding oak staircase to a lower level finished basement area.

A library/home office backs onto the living room and offers a two-sided gas fireplace option.

The sleeping areas are at the opposite end of the living space. A double door entry to the large master suite with an oversize walkin closet allows ample room for furniture placement.

The spacious ensuite has double his and hers basins, a luxurious oval corner tub and separate glass shower stall.

The guest suite has a walkin closet and a separate entrance to the main bathroom, affording privacy. A third large bedroom is situated close to the main washroom. Foot-warming 40-oz broadloom with half an inch high density underpad is found throughout the sleeping and entertaining areas.

The main hall closet, located off the foyer, has large mirrored doors that leads to the powder room.

These homes range from \$388,900 to \$439,900 plus any applicable lot premiums.

Visit the sales centre by taking the 404 north to Bloomington Side Road. Go east to the first set of lights at Woodbine Avenue and go north 1.5 kilometres to Donvale Road and turn west.

The sales centre is open from 3 pm to 8 pm Monday to Thursday and on weekends and holidays from noon to 6 pm.

For details: 905-713-0698.