

# Cam Fella returns to Stouffville

BRUCE STAPLEY  
Correspondent

One of this town's most distinguished elder statesmen will be in town to renew old acquaintances Saturday.

Cam Fella, known as the Pacing Machine while making harness racing history in North America in the early 1980s, is to take his place in the Strawberry Festival and Antique Car Parade Saturday morning.

The 18-year-old standardbred will be on display following the parade at the Stouffville Country Market, along with his former trainer-driver Pat Crowe. Autographs will be available.

Cam Fella began his remarkable career in 1982 after being purchased by

Norm Clements and Norm Faulkner, who at the time, were joint owners of the Stouffville Country Market.

With Crowe in the sulky, the horse won its first 11 starts on its way to being named Horse of the Year in Canada and the United States in 1982 and '83.

He won his final 28 races of the 1983 season, with that record still standing as the longest winning streak in the sport. Cam Fella established track records at seven major racetracks.

He retired in 1983 with total earnings of \$2,041,056, making him the richest standardbred in the history of harness racing at that time. Street has been named for the horse in Stouffville's east end.

Cam Fella went on to sire 11 million-dollar-winners after his retirement, more than any other pacing sire. He was retired from stud last year after producing nine crops of horses, which have earned more than \$60 million.

An invitation-only open house in the horse's honor is to be held Thursday at Clements' Prince Lee Acres, north of Uxbridge.

Cam Fella and Crowe have been reunited for a farewell North American tour to raise money for the Jennifer Ashleigh Foundation, the Crohn's and Colitis Foundation and the Harness Horse Youth Foundation. The tour, which began early this month, continues throughout southern Ontario and the Atlantic provinces.

## Lack of civic pride a disappointment to new resident of Stouffville

Dear Editor:

I am a recent resident of Stouffville, arriving at the end of winter, a looking forward to seeing Main Street once summer comes. Sad to say, I have been very disappointed.

Having seen Unionville and Markham with lovely floral displays, I had hoped Stouffville would have at least put up some kind of a show.

Three weeks after Unionville and Markham planted their tubs etc. Stouffville has put in some very second rate plants in ugly concrete containers and nothing at all on the lamp posts. That even this has been done I believe is due to some very dedicated volunteers, certainly without any backing from the local council, and they are to be applauded. I would have expected now that the Heritage

Train is running that something would have been done to attract visitors to Stouffville, if only for an hour or two. So far as I can see there is nothing to keep people here for even five minutes. Some of the shops should be forced to paint outside as they are a disgrace, and Main Street in general needs a face lift. Is there no civic pride?

It saddens me to have to say this as I feel with a bit of encouragement things could be changed, please convince me I am right.

K. Abbott  
Stouffville

### LETTERS

## RESIDENTIAL PLUMBING

**BALLANTRAE & MUSSELMAN LAKE  
WATER CONVERSION**  
Horizontal Boring Equipment Available to  
Preserve Your Landscape  
York Region Master Plumber #311  
• GUARANTEED WORK AT REASONABLE RATES  
PHONE MARK TODAY 642-4762.

**24 HR. DOOR TO DOOR SERVICE** since 1989 **FLAT RATE**  
**AIRYORK**  
220 Mulock Dr. Suite 201, Newmarket  
(905)953-9980 • Toll Free: 1-888-795-2777 • Fax: (905)953-9965  
Booking Hours: Mon.-Fri. 9am-6pm • Sat. 10am-2pm • Sun. 12pm-6pm



WORRY FREE TRANSPORTATION  
TO/FROM PEARSON INT'L. AIRPORT

### All major Credit Cards Accepted

Prices based on one to two occupants from same location

Municipality	Return Fare	One Way	Municipality	Return Fare	One Way
Aurora	69.55	37.45	Newmarket	74.90	42.80
Ballantrae	85.60	48.15	Nobleton	48.15	32.10
Concord	42.80	26.75	Oak Ridges	58.85	32.10
Holland Lndg.	80.25	42.80	Pufferlaw	139.10	74.90
Rossick	107.00	64.20	Richmond Hill	58.85	32.10
Kettleby	64.20	37.45	Sharon	80.25	48.15
King City	53.50	32.10	Schomberg	64.20	37.45
Markham	48.15	32.10	Stouffville	80.25	48.15
Markham	64.20	37.45	Sutton	128.40	69.55
Mid. Albert	90.95	48.15	Thornhill	53.50	32.10
			Unionville	58.85	32.10

Total price includes GST  
Senior citizens discount 10%  
Special Fare - each additional person \$10.00, children under 3 yrs. no charge  
Animal cages, golf clubs, skis, extra luggage \$5

Serving all of York Region **AIR-YORK INC.**

**RIDGE NORTH Realty**

PORT PERRY PLAZA (905) 985-9777 FAX 985-9161

Member Durham Region & Lindsay Real Estate Boards

CALL TOLL FREE 1-800-448-1056



#### LAKE SCUGOG - NORTH SHORE

Excellent 3 bedroom cottage - well maintained. Good shoreline. Large lot with mature trees. Call for appointment to view. Only \$119,900.



#### PRINCE ALBERT - GARDENERS DELIGHT

Cozy 3 bedroom bungalow, eat-in kitchen, den, main flr. family room with walk-out to large deck. Huge dining room. Basement has rec room with air tight setting plus 2 bedrooms. Newer addition makes this home a lot larger than it looks. Must be seen inside. Asking \$169,900. Try an offer! Must be sold now.



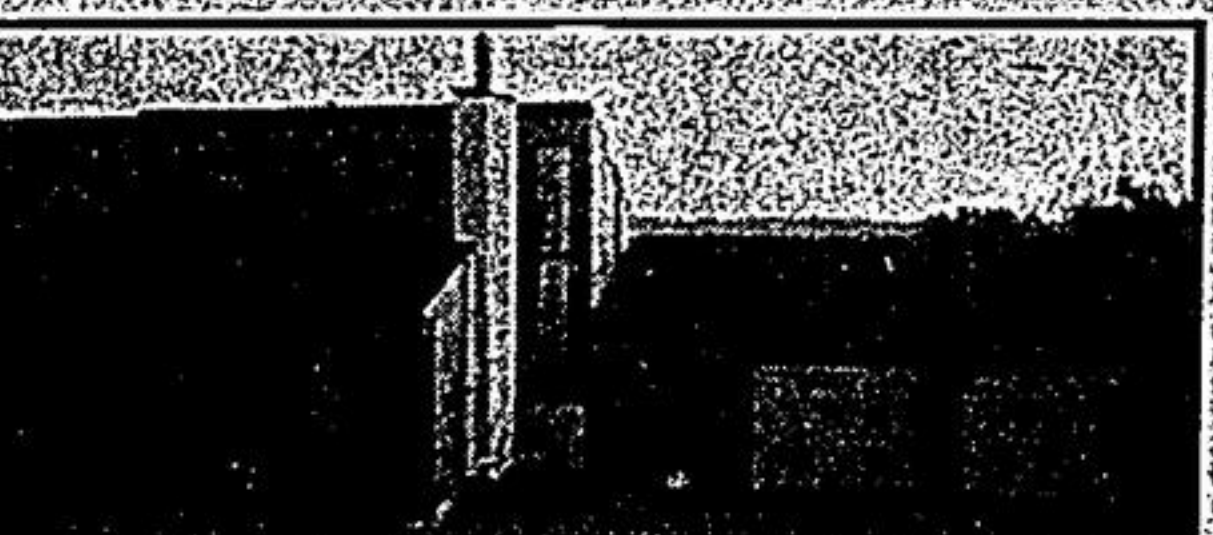
#### PORT PERRY - LOCATION/LOCATION!

Hobbies/gardeners delight. Good 4 bedroom older home with many upgrades. Kitchen with walk-in pantry and walk-out to mature lot. Large dining area, double size living room, rec room. Large workshop with many uses. 290' of road frontage. Asking \$175,000. Come view for yourself! Must be sold!



#### CENTURY HOME ON MATURE PARK-LIKE LOT IN MANILLA

Only seeing is believing! This 5 bedroom home offers quality and originality of yesteryear. Main floor laundry, family room with gas fireplace and walk-out to large deck, den with fireplace, formal living and dining rooms, 2-1/2 bathrooms, huge verandah. Garage/workshop. Value plus - come view for yourself. \$194,500.



#### 3+1 BEDROOM VICEROY

Featuring cathedral ceiling, sunken living room with floor-to-ceiling brick fireplace with insert. Walk-out basement with airtight setting. Over-sized double garage. Inground pool with gazebo. Nicely landscaped with numerous mature fruit and walnut trees. Breathtaking view on very private 10 acre lot. Call for full details. Asking \$195,000.

## OPPORTUNITY PLUS!!

Port Perry industrial land zoned M2 salvage, recycling, auto wreckers, etc. Several parcels available, 20 acres, 12 acres, 3 acres with 6,000 square foot modern building. Call for full details: (905) 985-9777 or 1-800-448-1056.



No. 12 The Black Pool Specialists

"BETZ IS THE BLACK POOL SPECIALIST. AFTER ALL, WE CREATED THEM" - MARVIN BETZ



The Black Pool was a Betz innovation. It's the most natural-looking and easy to maintain pool you can buy. And nobody builds black pools with uncompromising standards of workmanship the way Betz does.

"If you want a pool with the natural look of a pond, our Black Pools are ideal. We've got the landscaping, stonework and waterfall designs to complement them, too."

For a Black Pool or any other kind of pool, you can't do better than Betz Quality.



YOU'LL NEVER REGRET BUYING BETZ QUALITY



TORONTO (416) 798-7955 STOUFFVILLE (905) 640-1424