

War veterans honored at park dedication in Claremont

Canadian Legion Branch 483, Claremont, will be rededicating the local park on Saturday.

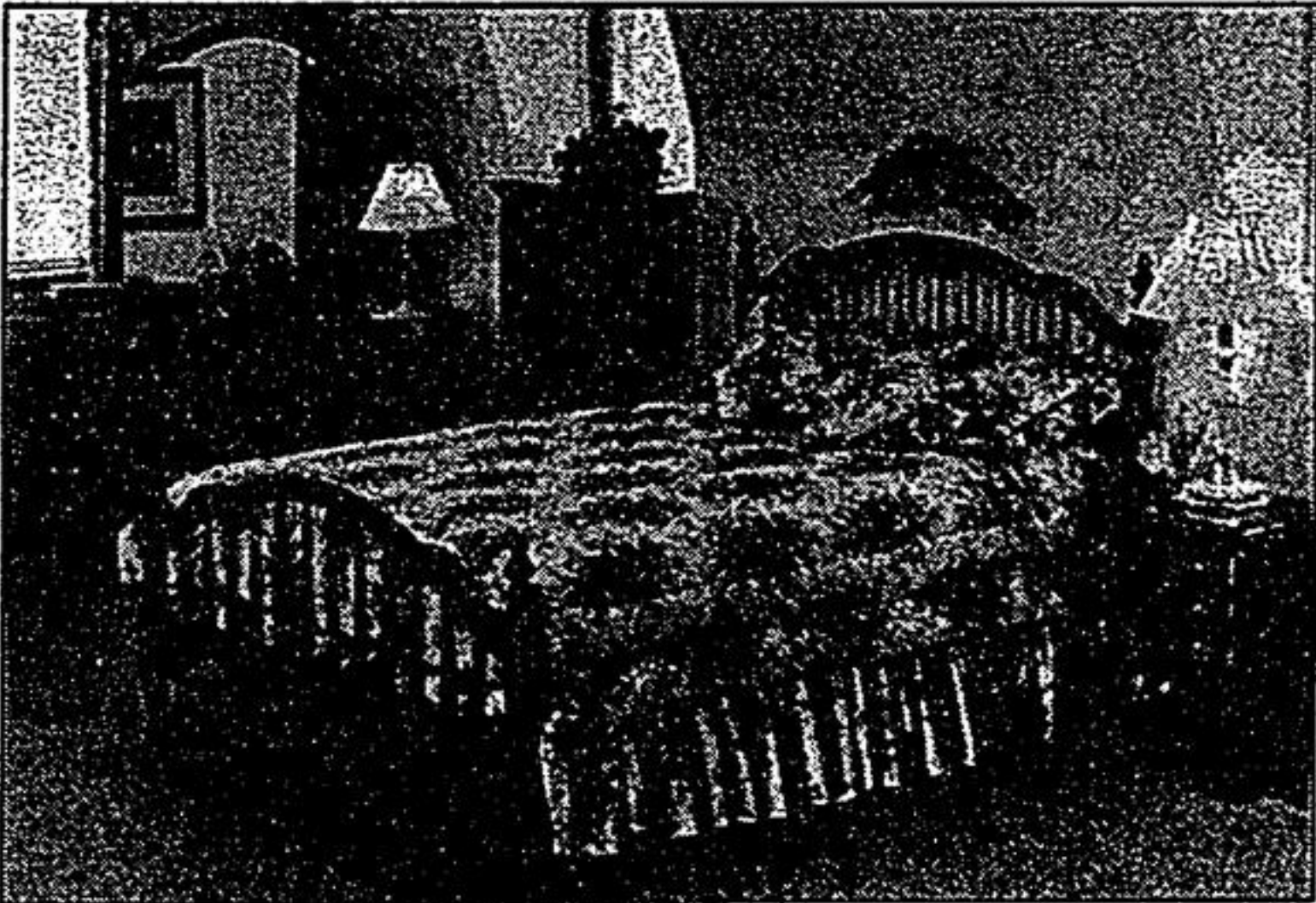
The veterans who did not return from both world wars were named on plaques which were erected in the park next to the legion.

Recently, a new community centre was built on the land, and the plaques were removed. The centre will be officially opened on June 21, and the legion members will rededicate the park in honor of their fallen comrades and all the veterans in the area.

They are having a drum head service and a short service to honor the vets, and the Uxbridge Pipeband will also be attending.

Starting at 12:30 p.m., there will be a short march from the branch to the park entrance, after which there will be a salute to the veterans. Following will be the official opening in the centre of the park, then a return to the legion branch for an open house.

ALMIRA FURNITURE & INTERIORS BEDROOM EVENT



GST & PST INCLUDED ON CUSTOM ORDERS

This event offers great savings on fine quality bedroom furniture. Choose from beautiful suites or individual pieces in your choice of woods and finishes.

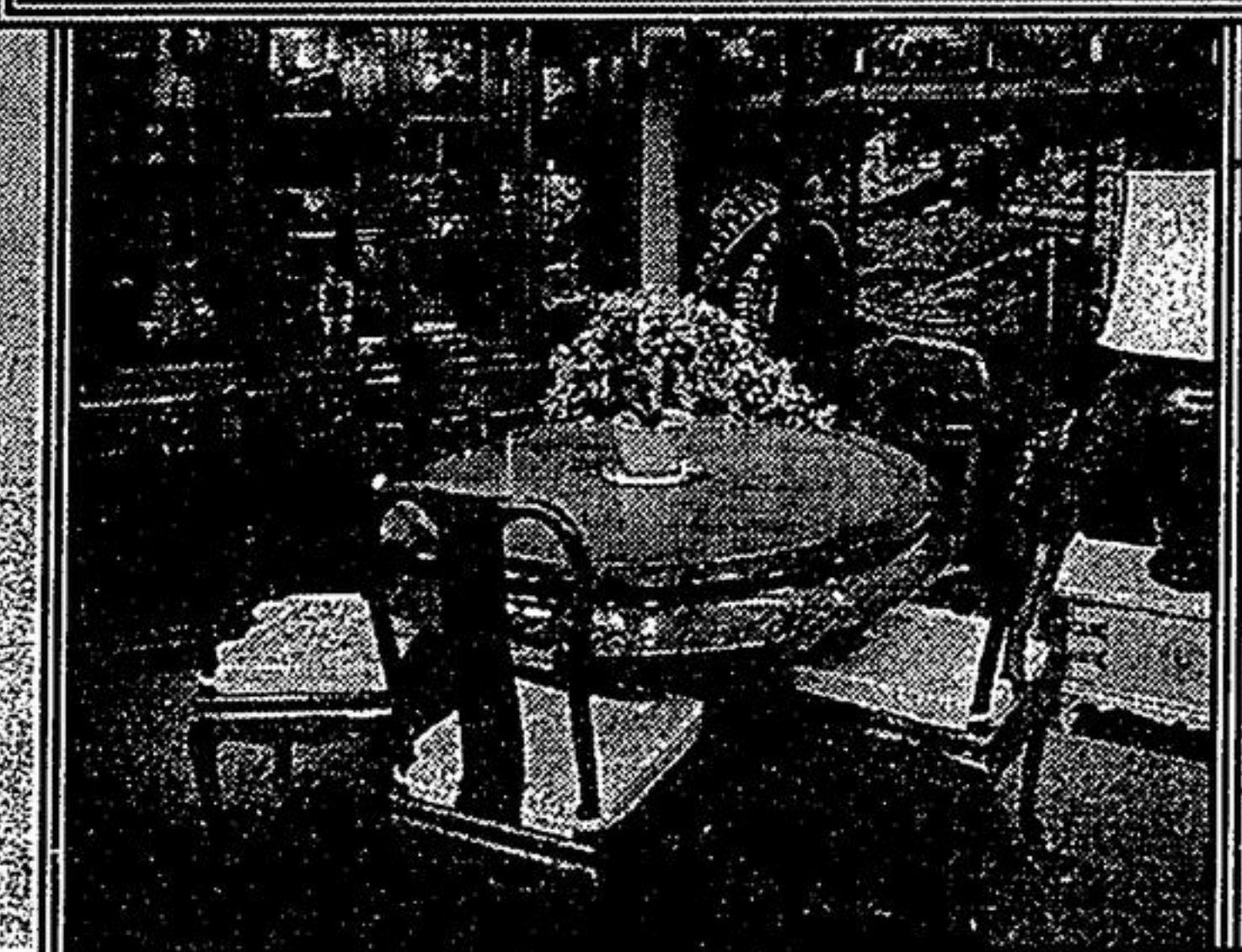
HOURS ARE:

MON., WED. 10-6 PM • THURS. & FRI. 10-9 PM • SAT. 10-5 PM
4747 HWY. 7 (EAST OF KENNEDY) UNIONVILLE

(905) 477-5524

GRAND OPENING SALE!

OPENS FRIDAY, JUNE 20



"Timeless home furnishings steeped in family tradition."

Exquisite, hand-crafted, hardwood furniture.

DYNASTY FINE CHINESE FURNITURE

2777 Steeles Ave., W., Unit 18

(416) 663-8980

THURS. 10-8 MON. SAT. 10-6

Business DEPOT LOW, LOW PRICES FOR HOME/OFFICE!

Business DEPOT
Office Supplies • Warehouse Prices

Canon C2500 MULTI-FUNCTION PLAIN PAPER FAX
• Fax, PC fax, copier, scanner, colour printer
• 360 x 360 dpi; 5 ppm
• 42-pg memory; 106 speed dials

699⁹⁹ WAS 749.99

Packard Bell

MMX COMPUTER SYSTEM
• Intel Pentium 166 MMX processor
• 16 MB EDO RAM
• 2.1 GB hard drive
• 16 x CD-ROM drive
• 33.6 modem

FREE 14" Packard Bell MONITOR WITH PURCHASE OF ANY PACKARD BELL COMPUTER SYSTEM!
Value: 399.99!

2199

2-LINE CORDLESS PHONE
• 25-channel auto scan
• Crystal Clear Sound™
• Conference/hold/10-num memory
• Distinctive ring between line 1/line 2.

149⁹⁹ WAS 159.99

Mustek

PLUG-N-SCAN PAGE SCANNER
• SCSI connection
• Built-in 10-pg auto doc feeder
• Up to 1200 x 1200 dpi
• 24-bit true colour
• Micrografix Picture Publisher and Textbridge OCR

169⁹⁹

RECOTON® SELECTED CELLULAR ACCESSORIES*

BATTERY ELIMINATOR
28375..... **9.99** WAS 19.99

LEATHER CASE
28377..... **14.99** WAS 21.99

SAVER/CHARGER
27238..... **14.99** WAS 29.99

SAVER/CHARGER
27239..... **14.99** WAS 29.99

LEATHER CASE
28369..... **12.99** WAS 21.99

EMERGENCY BATTERY CASE
31615..... **9.99** WAS 19.99

SAVER/CHARGER
34506..... **19.99** WAS 34.99

NICD BATTERIES
28376/36907..... **29.99** WAS 49.99

QUICKEN DELUXE VIRUCIDE PLUS 4.0

69⁹⁹

Great Canadian Getaways!
Win One of Three Great Vacations...

VOICE TYPE SIMPLY SPEAKING
• Voice dictation software
• Includes microphone headset

79⁹⁹ WAS 119.99

SOUTH SHORE 2-DOOR STORAGE CABINET
• 30" w. x 17" d. x 59" h.
• 1 fixed/2 adjustable shelves
• Maple finish

69⁹⁹

MYLEX WORKSTATION WITH HUTCH
• Pull-out keyboard & printer stand
• 53" w. x 42" d.
• Bleached Oak or Natural Oak finish

99⁹⁹

VALUE PACK FIGURING PADS
• 8-1/2 x 11" lined
• Package of 5

3⁹⁹

EPSON HIGH-QUALITY INKJET PAPER
• 8-1/2 x 11"
• 100 sheets/pack

14⁹⁹

#10 WHITE ENVELOPES
• 4-1/8 x 9-1/2"
• 500/box

5⁶⁹

150% OFF PRICE ON BATTERIES

PREMIER LEATHER CASE
• Combination leather briefcase/padded notebook computer carry case
• Multi storage sections and pockets

219⁹⁹

• AJAX: 16 Harwood Ave. S. • ANCASTER: 1015 Golf Links Road • BRAMPTON: 1250 Steeles E. (E. of 410) • BURLINGTON: 1881 Fairview (at Brant) • ETOBICOKE: 1750 The Queensway (opposite Sherway Gardens)
• HAMILTON: 2444 Barton E. (at Centennial) • MARKHAM: 3175 Hwy 7 (E. of Woodbine) • MISSISSAUGA: 5170 Dixie (S. of 401) / 5935 Mavis Rd. • NEWMARKET: 130 Davis Drive
• OAKVILLE: 2460 Winston Churchill Blvd. (at Dundas) / QEW at Dorval Drive • REXDALE: Hwy 27 & Rexdale Blvd. • SCARBOROUGH: 1936 McCowan (N. of Sheppard) / 1980 Eglinton E. (E. of Warden) • WHITBY: 1615 Dundas St. E.
• WOODBRIDGE: Hwy 400 & 7 • TORONTO: 2160 Steeles W. (at Keele) / 945 Eglinton E. (at Brentcliffe) / 3150 Dufferin (N. of Lawrence) / 375 University Ave. / 1140 Yonge St. / 250 Front St. E. (at Berkeley) / 542 Keele St.

STORE HOURS
MON-FRI 9 AM-9 PM
SATURDAY 9 AM-6 PM
SUNDAY 11 AM-5 PM

WEBSITE
http://www.businessdepot.com

CREDIT OPTIONS
• VISA • M.C. • AMEX • DISCOVER

FREE NEXT DAY DELIVERY
• ORDER PH: 1-800-668-6668
• TO ORDER FX: 1-800-567-2260

*MAY NOT BE AVAILABLE IN SOME STORES.