

Build indoor pool at rec centre: mayor

JOAN RANSBERRY
Staff Reporter

The place to build a new indoor swimming pool is the Whitchurch-Stouffville Recreation Complex on the Ninth Line, said local Mayor Wayne Emmerson.

Emmerson said the local recreation centre seems to be the choice of most.

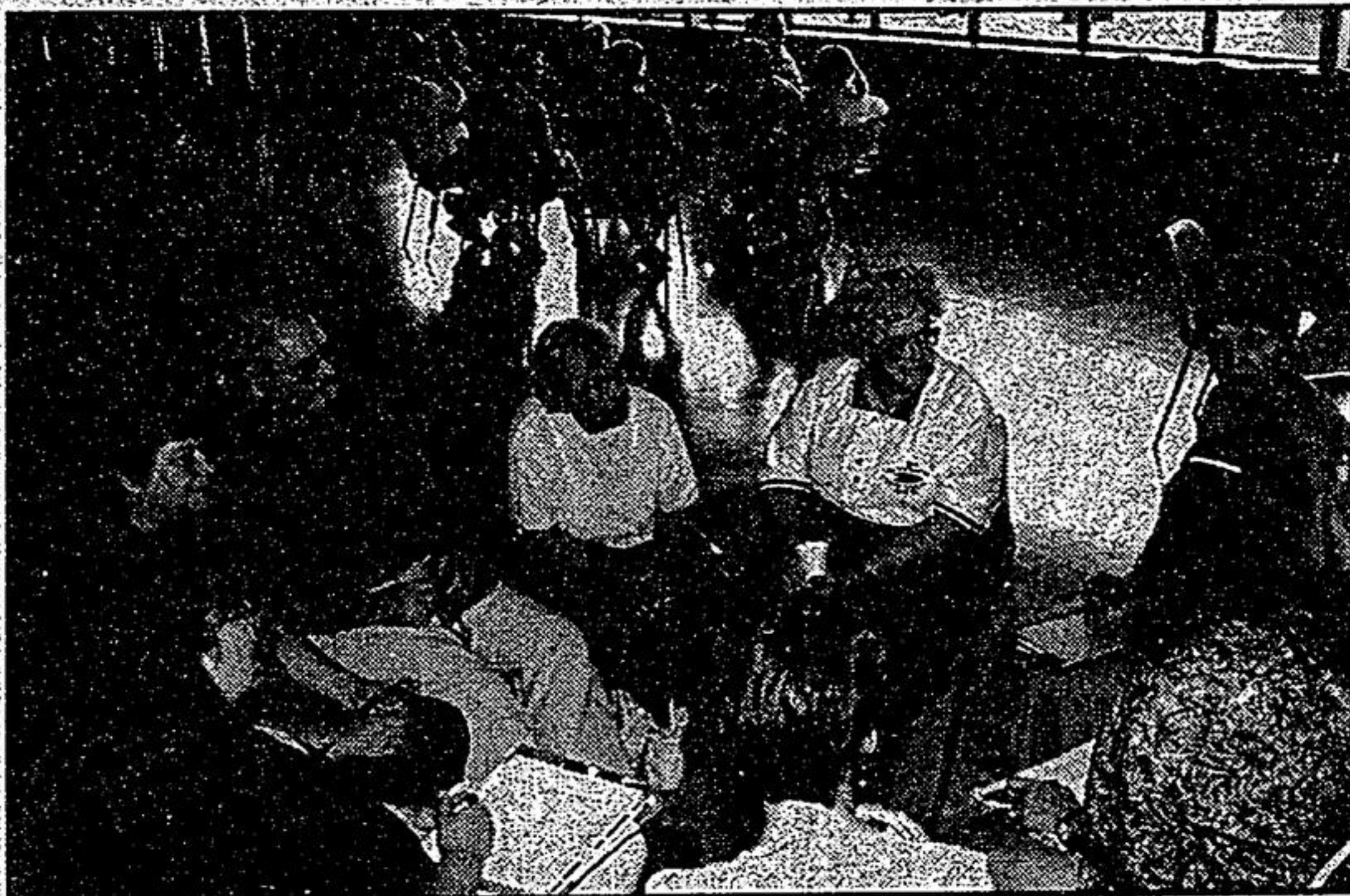
Meanwhile, last Thursday a group of interested residents met to discuss if, where and when a public pool will be built in Stouffville.

"A clear consensus to proceed with an indoor pool as soon as possible was the main result of the meeting," said Susan Harmsen,

chairman of the pool committee. "The key concern was how soon a pool could be built," she added.

The 30 residents attending the meeting gave strong support for several pool programs, water safety education, swim clubs, aqua fitness, seniors and family swimming, therapy rehabilitation and school swim programs.

Cost of the new facility is not known at this time. "Cost must be carefully controlled," said Harmsen. "It's realized that the community benefit of an indoor pool would be greater than any operating deficit which may or may not be incurred," said Harmsen. "The committee is continuing its research into costs."



IN THE SWIM: Residents meet to give their opinions on the details of building an indoor pool in town. Photo by SJOERD WITTEVEEN

Cemetery plan on agenda

From page 1

construction on the Woodbine Avenue site to begin.

Local companies will be used in the construction if their tender prices are reasonable, stressed Carmichael. "This will be an economic spin-off for Stouffville businesses," he said.

In February, Memorial Gardens was granted the right to come to the local municipality after win-

ning a challenge at the Ontario Municipal Board (OMB).

While the town lost at the nine-day OMB fight, Memorial Gardens, continued to be a good corporate citizen.

Here in Stouffville, Memorial Gardens have donated to the local fireworks display, the annual mayor's golf tournament and the Whitchurch-Stouffville Chamber of Commerce golf tournament.

Grade 3 tests results sent home

MIKE ADLER
Staff Reporter

As if report cards weren't bad enough, Ontario's third graders are getting a second reckoning this month.

Schools in York Region are sending home results from the first province-wide Grade 3 assessment, a 10-day test designed to show how well each student reads, writes and uses math.

The public board has promised the reports will reach parents by Monday. The separate board says most results will reach homes by tomorrow, and the rest by Wednesday, when school ends.

"Some schools don't have them yet," said Daria Lindsey, evaluation officer at the public board. "It is coming, but it's coming at a staggered pace."

Parents will be able to compare a child's scores in the three testing areas to provincial averages, said

Betty Goulden, coordinator of programs for the public board.

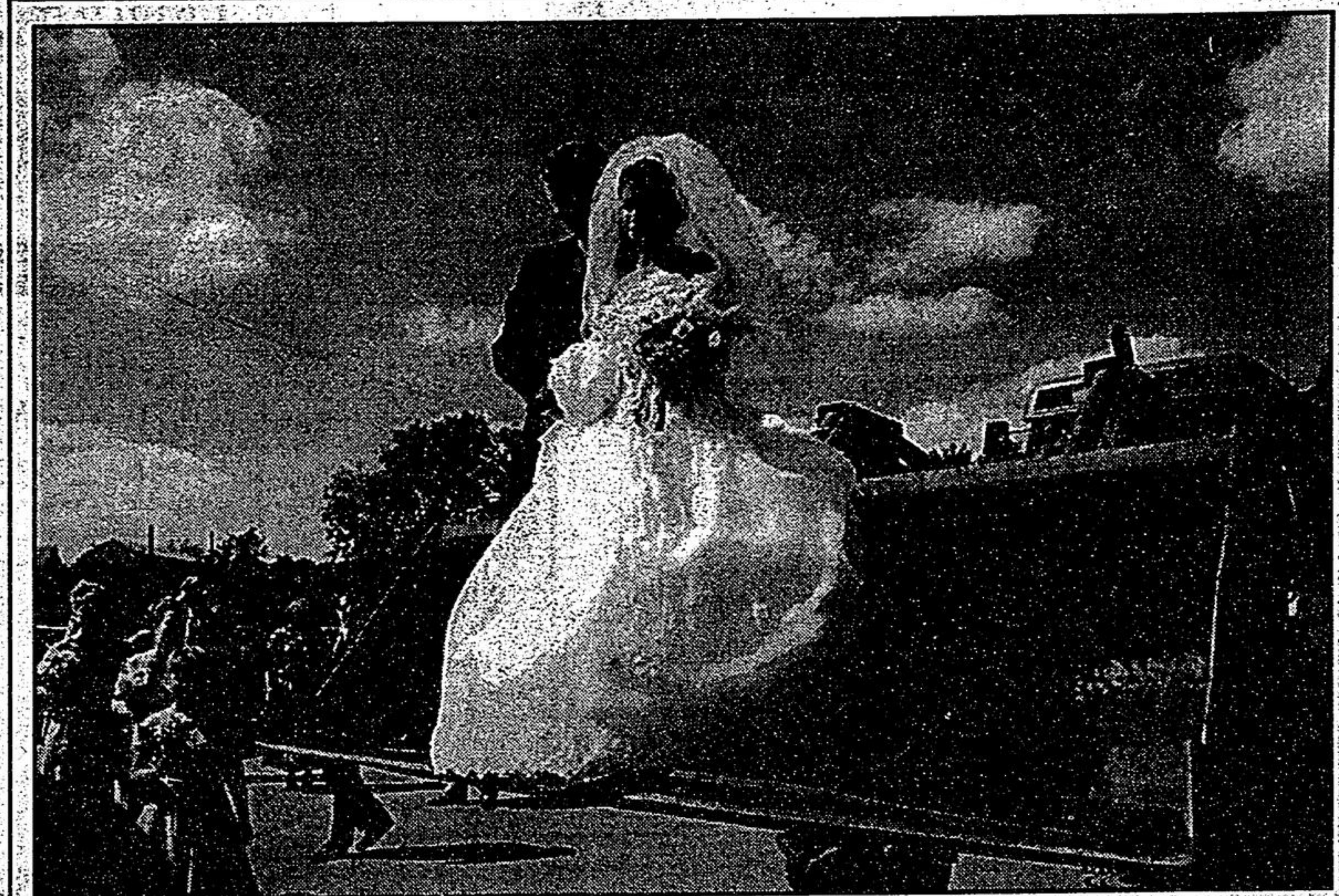
But how each student performed in smaller parts of the assessment will have more meaning for teachers, who could use the scores to adjust their teaching methods, she said this week.

The testing — an ambitious project with 140,000 pupils in April — didn't cover all subjects taught in the classroom and teachers weren't able to explain the material, as they can do in the classroom, Goulden added.

Teachers' unions and individual instructors have praised and criticized the assessment, run by the provincial Education Quality and Accountability Office chaired by Markham parent Barb Smith.

About 92.5% of Catholic teachers who responded to a union survey thought the difficulty of mathematics used in the testing was unfairly high.

Local teacher Monica Lysay



CLEAN START: Bride and groom Jen Lehman and Jeff Taber start their new life together on the front end of a manure spreader after exchanging vows Saturday afternoon at the Stouffville Missionary Church on Main St. Photo by CHERYL JOHNSON

Hazardous waste depot opposed

JOAN RANSBERRY
Staff Reporter

A plan to bring a \$135,000 household hazardous waste depot to Stouffville is being challenged.

Gormley resident Olive Komar is questioning why waste from Newmarket is heading to the region's waste yard on Woodbine Avenue and St. John's Sideroad.

"Situating the facility on an already busy stretch of Woodbine Avenue can only lead to further congestion in this vicinity," said Komar.

York Regional Council is expected to deal with the proposed Stouffville facility this week, as well as with two others: one for Markham and one for Georgina.

Before the York Region facility can be built, the plan must undergo public scrutiny and be approved by Whitchurch-Stouffville Council.

Now, household waste, which

includes paints, pesticides and oil, is taken to mobile collection units which are set up for a few days once a year at the Whitchurch-Stouffville Recreation Complex.

Stationary depots are viewed as not as costly, more convenient and safer.

Meanwhile, they are overseen by the Ministry of the Environment.

Komar wonders why the depot isn't built in Newmarket since last year, 927 vehicles dropped off hazardous waste at the mobile unit in Stouffville, while 2,945 vehicles dropped off hazardous

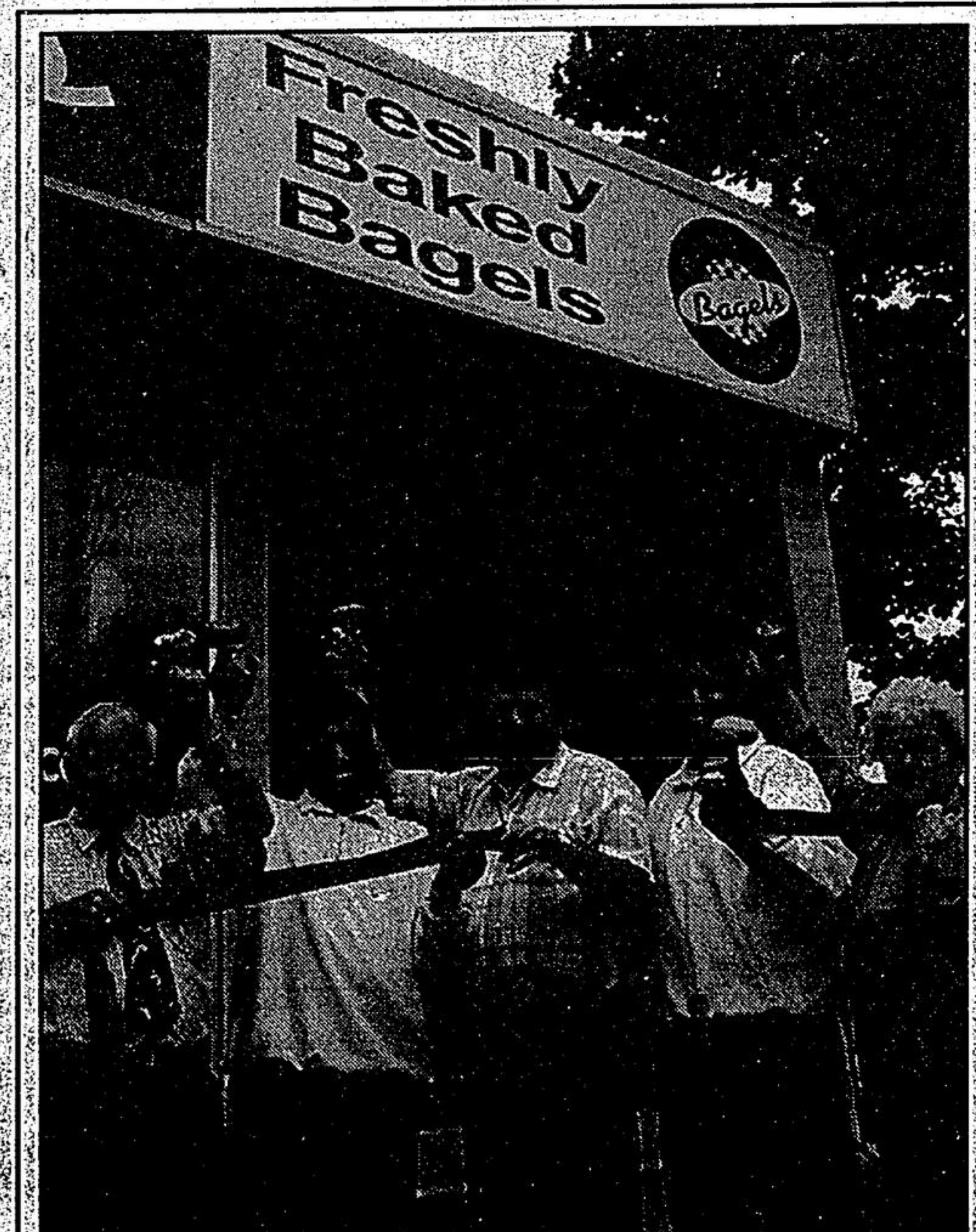
waste at a mobile unit in Newmarket.

"Newmarket seems more logical site for a permanent depot," said Komar.

Komar also takes issue with safety factors. "I am concerned that such a small site will not accommodate all the waste of such a large area."

The site if not properly monitored will become full before the scheduled pickup, and consequently toxic waste will be left outside," she said.

Komar has expressed her concerns to the region.



RING IT UP: Basically Bagels officially opened its doors on Main Street Monday, and on hand to celebrate were, from left, Councillor Cliff Dunkeld, manager Azim Kassam, Mayor Wayne Emmerson, Kass Kassam and Chamber of Commerce president Helene Johnson. Photo by STEVE SOMERVILLE