



KEEP IT BEAUTIFUL: Beavers and Cubs from the First Stouffville helped the Stouffville Horticultural Society plant the annuals in the planters on Main Street. In the picture, as Beaver Ryan Mason, 7, waters the plants at right, Christopher Copp, 5, Matthew Stierhof, 8, and Justin Stierhof, 9, put the finishing touches on these annuals on Thursday.

Photo by SJOERD WITTEVEEN

Reta Alcorn is senior of year

"Everyone in Vandorf loves her."

Ward 1 councillor Ivanka Bradley was talking about Whitchurch-Stouffville's Senior Citizen of the Year award winner Reta Alcorn, who was honored at Monday's council meeting. "I've known her for eight years and I've worked with her on the Vandorf Community Centre board."



RETA ALCORN

Alcorn, who has been on the board since the early '70s, is also a long time member of the Friends of the Museum. She has been president of the board for seven years and has worked tirelessly for the facility since she first became involved, said curator Dorie Billich. "It was the museum and heritage advisory board that recommended her name to council," Billich noted.

"She's never said a mean word about anybody and she's always very accepting of people," said Bradley. "What's impressed me about her is that she's always giving to the community, not just in Vandorf but throughout the area. She'll do anything for anybody, but she does things in a quiet way. She's a wonderful person to work with and she really deserves this award."

Cyclists' dream

Would you like to be one of 140 cyclists to explore the scenic York and Georgian Bay regions? Here's your chance. This summer, on July 19 and 20, The Lung Association will be hosting the first ever in Ontario Lungs Are For Life BikeTREK '97. This weekend extravaganza includes a special guest appearance by three time Olympic medal holder, Curt Harnett, waterfront accommodations, Second City entertainment and the chance to win cumulative prizes! Register today by calling (416) 922-9440 ext. 234.

Station will be 'cornerstone'

From page 1 ■
merce, the local Business Improvement Area, Canadian National Railway, GO Transit and the province of Ontario by way of a \$35,000 grant.

The building will house the tourist train ticket office, the Whitchurch-Stouffville Chamber of Commerce, a CN office and the

town's economic development office.

"All things came into play to get it done. There's been lots of community involvement and community interest. It'll be the cornerstone of Whitchurch-Stouffville," said Emmerson.

"The council and residents of Whitchurch-Stouffville are very

optimistic that this venture will attract many tourists to our community," said Emmerson.

The mayor stressed that the project has been a success because of community cooperation, innovative financing and volunteerism. "It came in within budget, on time and is a very impressive looking building," said Emmerson.

Summitview student scores perfect in Gauss math contest

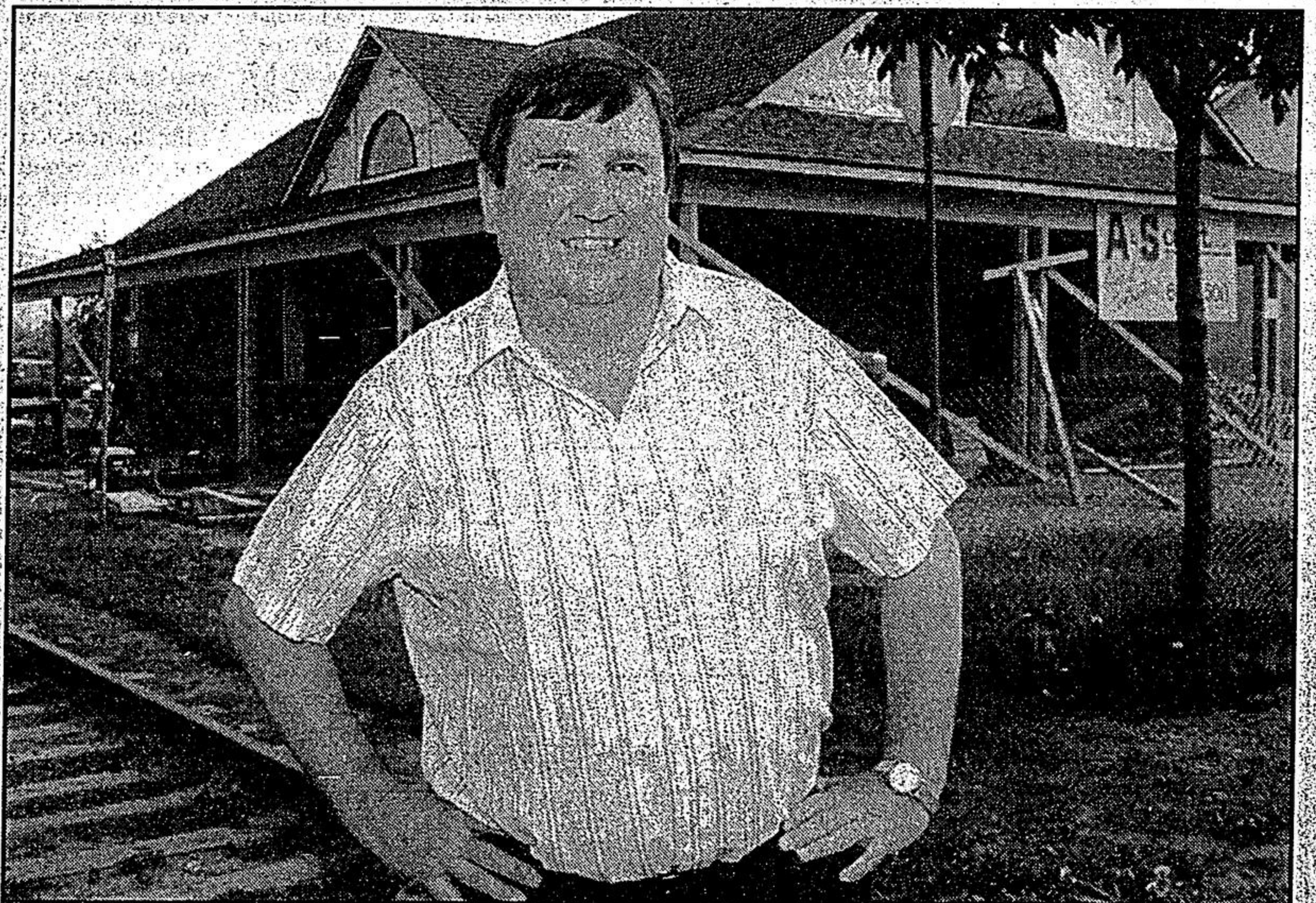
From page 1 ■

Carrite and Charlene Morris. Grade 8 - Heather Lyon, Ben Lowrie, Andrew George, Lindsey Hutchison, Ashlee Bardell and Alison Wannop. "Each spring Summitview Public School has a Gauss Math Club for Grade 7 and 8 students who are 'A' math students and are selected by their teachers for putting outstanding efforts into their mathematical work and problem solving," said Hill.

Participating students "share ideas, practise problem solving and enjoy mathematical tasks. It is an honor to be chosen for the Gauss club and an even greater honor to write the Gauss contest." Hill and her colleague, Ted Sheperd, who is the other intermediate teacher involved, are strong proponents of the contest and thoroughly enjoy working with the young contestants.

One thing that appeals to Thomas about Gauss is its relevance to reality. "They're real life questions," he pointed out. "You're just thinking about a way of solving a problem. You can't really study for it, you just have to keep practising."

He and his family moved to Stouffville from East York in December and he feels very much at home here. "This school gives me a challenge because there are other students who can do this as well." Thomas said he has known for five years what he wants to do when he leaves school and it's a career that will make excellent use of his problem-solving skills. "I'm going to be a lawyer."



ALMOST READY: Mayor Wayne Emmerson is pleased with the speed at which the new station for Stouffville is coming together.

WE'RE FIRST IN DISTRIBUTION

We've delivered 22,130,280 flyers door-to-door, so far this year.

For further information on how we can deliver your flyers call:

Joan or Ruth at 640-2100.

The Tribune *Stouffville*

Watch for these Flyers on Saturday, June 14, 1997

CO-OPERATORS - DIRECT PROTECT
SEARS - SEARS TODAY
BIWAY
ULTRA MART

A & P
CANADIAN TIRE - MILLIKEN
WESTON PRODUCE
IGA - STOUFFVILLE

DOMINION
PAPA KARL'S PIZZA - STOUFFVILLE
LOBLAWS
CANADIAN TIRE - RICHMOND HILL

Selected areas only