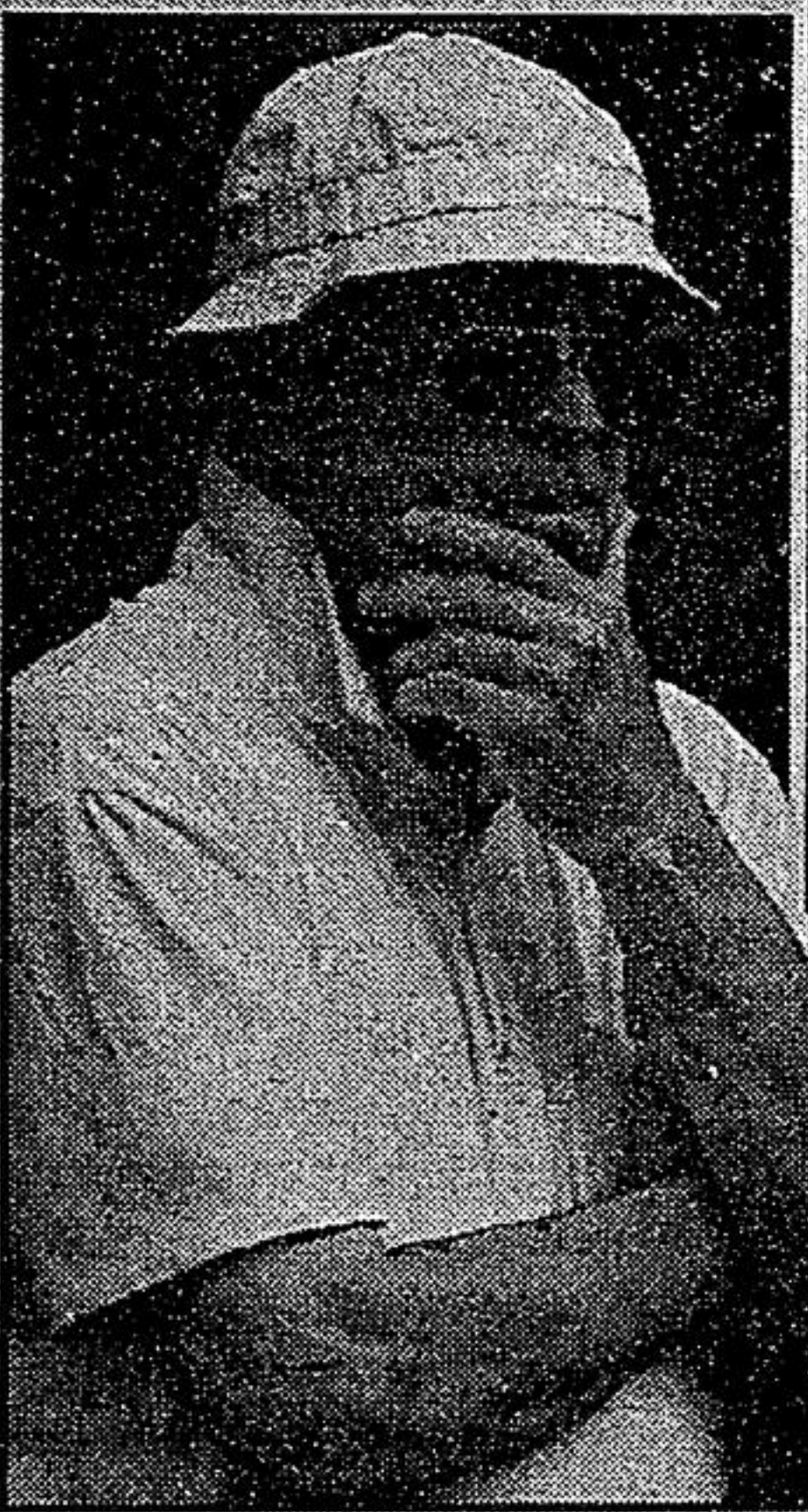
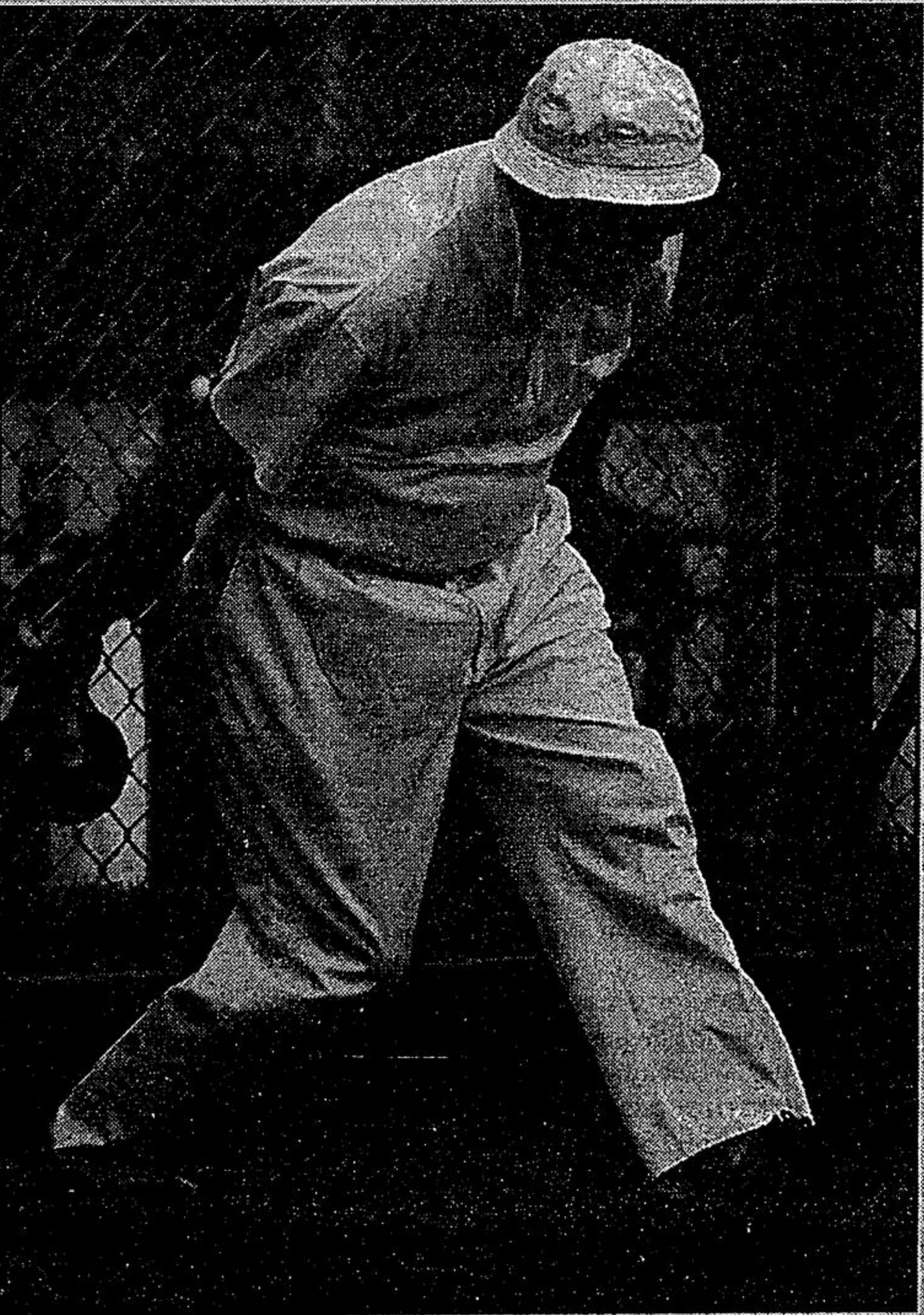


## Drama on the greens



**THE THINKER:** A methodical Elmer Farthing plans his shot before unleashing a bowl. He was competing in the area men's lawn bowling tournament in Stouffville Wednesday afternoon. Farthing finished second high and was the three game win-



Photos by STEVE SOMERVILLE

# Caution is key to growth in Preston Lake, Vandorf

JOAN RANSBERRY  
Staff Reporter

"Look but don't touch" is the message being delivered by two local ratepayer groups.

When it comes to connecting Vandorf to Aurora's communal water and sewer systems, local ratepayer association officials want Whitchurch-Stouffville Council to take a cautious approach.

Communal services usually attract growth, including industrial and commercial. Residents of Vandorf and Preston Lake are worried that growth will alter the rural character of their area.

On Tuesday, the Vandorf Ratepayers' Association and the Preston Lake Association were, once again, successful in their bid to have the two communities studied under one

plan even though staff recommended that two separate Secondary Plans be carried out.

Staff recommended separating the study area into two in order to accommodate the town of Aurora and York Region working with Whitchurch-Stouffville to provide municipal water and sanitary sewer services to the community of Vandorf.

"We compromised," said Chris Diamond, Vandorf association's spokesman. "We agreed to council taking a look (at the Aurora service) but that's as far as we went."

A Secondary Plan is struck to help municipal government determine what goes where. Whitchurch-Stouffville is in the throws of completing a \$300,000 study of the downtown core.

It'll be presented to York Region

## DEVELOPMENT

in the fall.

The plans are critical to the communities, stressed Diamond.

If in the process of the Secondary Plan, it's recommended that an agreement be ironed out with the Town of Aurora, water and sewer services could find their way to the hamlet, translating into substantial residential and industrial growth.

Vandorf's population could climb to "thousands" and industrial growth would increase a great deal, stresses Diamond.

Officials of both ratepayer groups continue to remind council that area residents opted for the quiet life when choosing to live in both Vandorf and Preston Lake.

# Schickendanz plan discussed

JOAN RANSBERRY  
Staff Reporter

More information on the proposed \$150-million adult lifestyle community slated for Ballantrae will be presented to local council Monday evening.

The new community which includes an 18-hole golf course will be built on the 370 acres on Aurora Rd. near Hwy. 48. It's being proposed by the Schickendanz Brothers.

The developer hopes to start construction of the golf course this fall. As for the residential part of the plan, Schickendanz hopes to have all government red tape out of the way before the end of the year.

Most of the residents of the new development will be 50 years and older, while the development will take about 15 years to complete.

About 80 per cent of the homes will be one-storey bungalows, while

the rest will be link houses.

The development will be a condominium setup with residents owning the houses and the lots, while all outdoor upkeep is done for the residents.

## Excavation gets council okay

A Stouffville company has been given the go-ahead to excavate 13,000 cubic metres of wood waste.

On Tuesday, Whitchurch-Stouffville Council and Canada Building Materials struck an agreement for the company to bring in a temporary waste processing facility to get rid of the waste made up of construction material and some rubber. The clean-up will take about seven weeks. The neighbors on Concession 8 will be notified in writing.

The process involves CBM securing a Certificate of Approval from the Ministry of the Environment (MOE) and getting a building permit from the local fire department.



**WE'LL MISS YOU:** The Stouffville office was a hive of activity as friends, co-workers and clients of our retiring advertising sales representative Joan Marshman, centre, dropped in to her farewell open house. On hand to wish Joan best wishes were Tribune Publisher Pat Pappas, left, and Stouffville Mayor Wayne Emmerson. Joan retired this week after 43 years at the newspaper.

Photo by SJOERD WITTEVEEN

## WE'RE FIRST IN DISTRIBUTION

We've delivered 21,219,861 flyers door-to-door, so far this year. For further information on how we can deliver your flyers call:

Joan or Ruth at 640-2100.

The Tribune Stouffville

Watch for these Flyers on Saturday, June 7, 1997

WALMART  
LOBLAWS/SUPERCENTRE  
SEARS-SEARS TODAY  
COUPON CLIPPER  
ZELLERS

BIWAY  
A & P  
WESTON PRODUCE  
M & M MEATS - ST/UX  
IGA - STOUFFVILLE

SEARS CATALOGUE  
LOBLAWS  
CANADIAN TIRE - RICHMOND HILL

Selected areas only