

Small coffee & toasted bagel \$1.64 plus tax  
**DAINTY DONUTS & DELI**  
 18 Ringwood Drive

# THE TRIBUNE

Vol. 109, No. 26

Tuesday, May 27, 1997

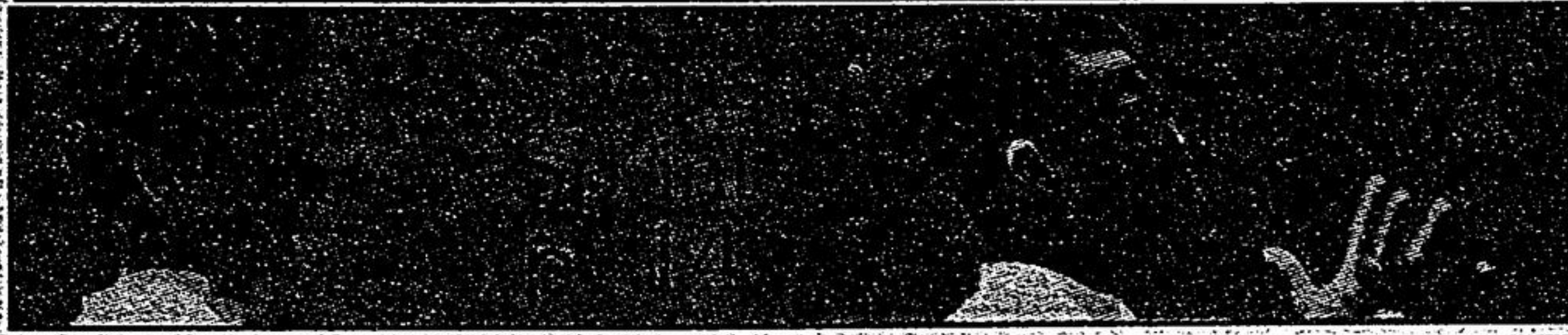
20 Pages 50¢ (GST incl.)

A Metroland Publication Serving Whitechurch-Stouffville Since 1888



Carol L. Clements

**MONEY CONCEPTS**  
 The Money Management People  
**642-4540**



JOAN MARSHMAN

## Joan Marshman retiring

At the age of 15, Joan Marshman started work at *The Tribune* as a linotype operator. In two weeks, she will leave *The Tribune* as its heart and soul.

Joan, a popular real estate and retail advertising representative, is retiring. After more than 40 years with the paper.

The life-long resident has held a variety of positions including compositor, distribution representative and finally, sales. Joan's husband Tommy is planning to retire from Betz Pools in December, and Joan decided to take the summer off before he retired.

"Joan is *The Tribune*," said Publisher Patricia Pappas. "She'll be sorely missed."

Joan plans to take a well-deserved rest for the summer, and catch up on her hobbies like reading, antiques and scouring garage sales.

# Town council set to move on next stage of expansion

■ *New town hall/library to go forward*

JOHN LAMBERSKY  
 Correspondent

A decision to move forward on a plan to construct a \$3.4 million town hall-library complex was expected to be made last night at a town council meeting.

Council voted on a motion that would put the town in the next stage of the process, actively searching for a design-builder for the new

town offices.

The same item was on the council agenda two weeks ago, but decision to go ahead with the new complex was delayed until last night's meeting.

Council stalled the decision at that time in order that the library board have a chance to re-affirm its desire to have the town library expanded.

Several days later, however, serious safety concerns were raised when Sirman Associates Ltd., released a report detailing fire hazards in the existing town hall building.

As a result, local council

decided that public meetings will be moved from the town offices to the Christian Blind Mission on Stouffville Rd. Sirman and Associates also reported that the repair bill for the town offices would range anywhere between \$468,000 and \$701,000. Ward 5 councillor Judy Scala feels that it is time to look for a design/builder. She pointed to the expanding needs of the library, the rehabilitation of the downtown area, and the repairs needed for the existing buildings.

"We need more information," said Scala in an interview on Monday. "You can't

make decisions on estimates alone. I am prepared to move on to the next stage. Any expense to go to step two (in the process) is worth it."

Watch Thursday's *Tribune* for a follow-up on the meeting.



**TOUGH ROW TO HOE:** Strawberry planters such as these are gearing up for the coming season. Berries are behind this year, because of the cold spring, but there is a warming trend in the forecast.



### News you can use

The Lung Association Metropolitan Toronto and York Region is offering the 1997 Executive Golf Guide to Stouffville residents, a package containing discounted coupons that allows the golfer to play on 44 of the top GTA golf courses and includes 111 free rounds of golf.

At a cost of \$39, the Executive Golf Guide makes the perfect Father's Day gift and it is a great way to say thank you to employees.

All proceeds go towards community programs and research of The Lung Association.

Guides are limited. Reserve your Executive Golf Guide today by calling The Lung Association (416) 922-9440 or (905) 882-0101.

### Inside your Tribune

- Food ..... p. 6
- Calendar ..... p. 12
- Sports ..... p. 14
- Classified ..... p. 16

**newline**  
 640-2100

**75 YEARS 1922-1997**  
 Serving Canadians for 75 years

**STOUFFVILLE CANADIAN TIRE**  
**GRIP LIGHT FLEXIBLE FLASHLIGHT #652105**

Regularly \$29.99

**ON SALE FOR \$19.99**

<b>AUTO</b> Monday-Friday Saturday	<b>CENTRE</b> 8:00 a.m. - 8:00 p.m. 8:00 a.m. - 6:00 p.m.
<b>RETAIL</b> Monday-Friday Saturday Sunday	<b>STORE</b> 8:30 a.m. - 9:00 p.m. 8:30 a.m. - 8:00 p.m. 8:00 a.m. - 6:00 p.m.