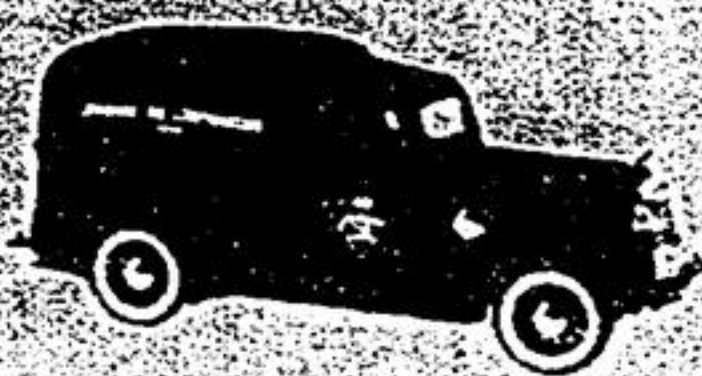


CANADIAN TIRE

5945 MAIN ST., STOUFFVILLE
PRESENTS



CRUISE-IN '97

MAY 23, 97 4:00 p.m. to 8:00 p.m.
Bring your ROD, CLASSIC, COLLECTOR CAR OR TRUCK

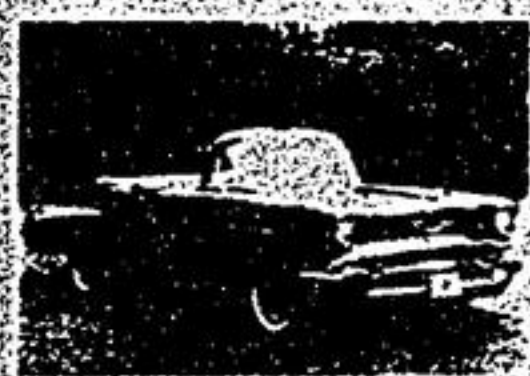
SEE PETER GIBBONS AND HIS 1997 CASCARACER

PROMO KITS TO REGISTERED ENTRANTS

PEOPLE'S CHOICE TROPHY DASH PLAQUES TO REGISTERED ENTRANTS

For Information:
Call: Bruce MacKenzie
905-640-5050

FREE ADMISSION
REFRESHMENTS



Please recycle this newspaper

TOWN OF WHITCHURCH-STOUFFVILLE

ELECTION SEMINAR 1997 MUNICIPAL ELECTIONS FINANCIAL STATEMENTS CAMPAIGN CONTRIBUTIONS & EXPENSES

If you are interested in running for Office in the forthcoming Municipal Election, Monday November 10th, 1997, it is very important that you understand the rules governing campaign contributions-expenses and related Financial Statements.

To explain these rules, the Ministry of Municipal Affairs will be conducting a FREE SEMINAR to Candidates and their Authorized Designate on Thursday, May 29, 1997 between 7:00 p.m. to 10:00 p.m. at:

The Regional Municipality of York
Municipal Offices
17250 Yonge Street
Newmarket, Ontario

Those individuals seeking election for the offices of:

- York Region Board of Education
- York Region Separate School Board
- Municipal Council for those Municipalities in York Region are encouraged to attend.

For further information, please call Michele Kennedy, Susan Slack or Yvonne Hurst in the Town of Whitchurch-Stouffville Clerk's Department.

To register for this seminar, please fax or confirm by telephone on or before May 23, 1997

Contact: Town of Whitchurch-Stouffville
Municipal Offices
19 Civic Avenue
Box 419
Stouffville, Ontario L4A 7Z6
telephone: 640-1900 or 895-2423
fax: (905) 640-7957

Town gives gift to Santa

■ Council okays grants for local organizations

JOAN RANSBERRY
Staff Reporter

Santa Claus, cemeteries and war veterans are all about to receive money from the public purse.

Last week, Whitchurch-Stouffville Council started the process of approving money to local groups and associations.

Money approved included \$750 to Bloomington Cemetery, \$1,000 to Hartman Cemetery and \$500 for the cemetery in Lemonville.

A \$100 gift was earmarked for the Stouffville Santa Claus parade, while a \$500 donation was approved for Harvest Fest.

Council agreed to give \$100 to the Heart and Stroke Foundation, while \$125 will go to the local branch of the Royal Canadian Legion.

Meanwhile, council determined that \$100 is to be Whitchurch-Stouffville's donation to the wall of remembrance which is being build west of Toronto.

The wall recognizes Canadian soldiers killed in the Korea.

Last year, local council paid out a total of \$45,491 in grants and donations.

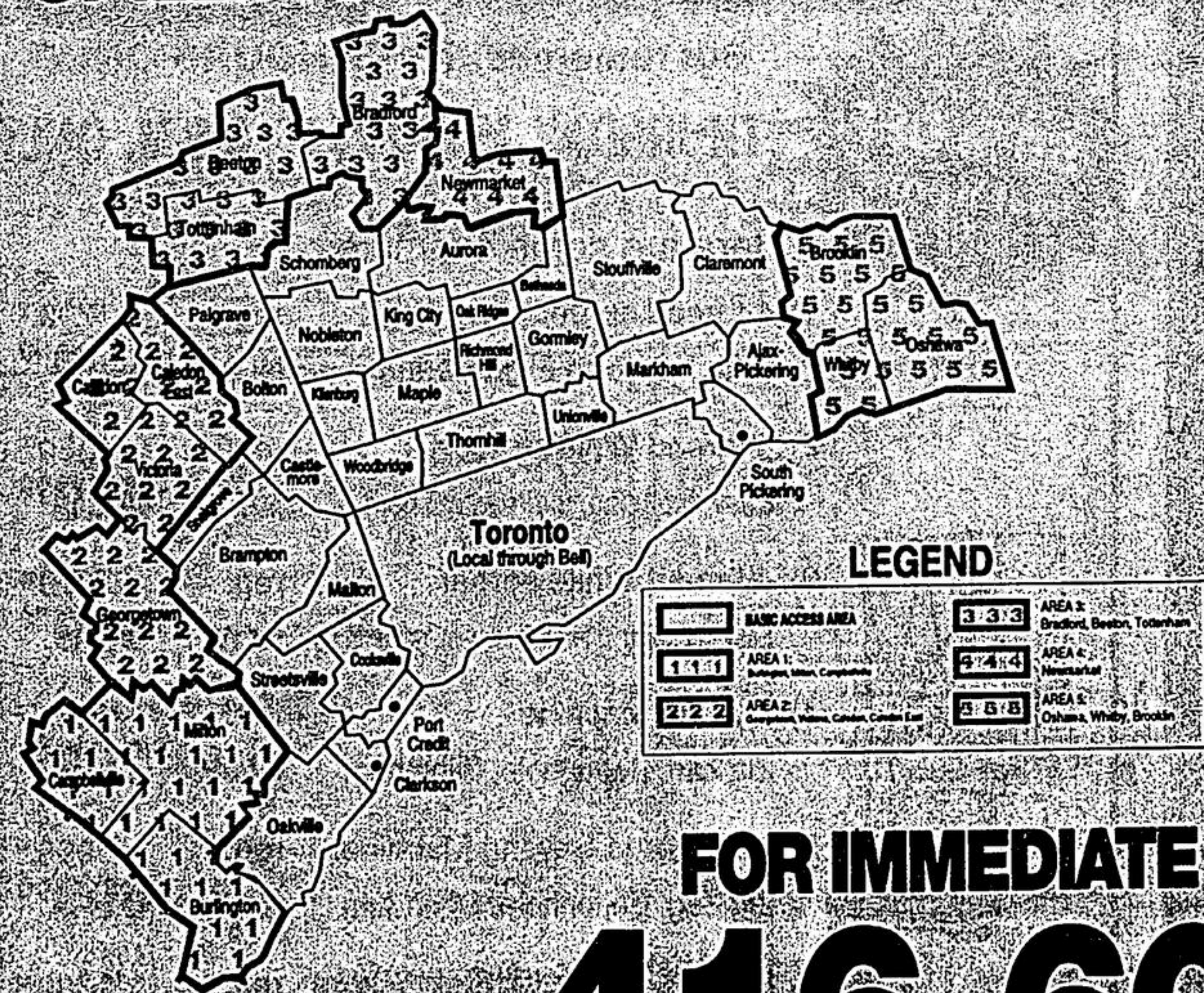
The Fall Of Long Distance

CALLING THE GREATER METRO AREA COULDN'T BE EASIER!

Metro Access, an industry leader in flat rate calling now offers you even greater value than ever before! Not only do we offer you all the shaded areas for one low price of \$14.95 a month but now you can select any one of the extra areas on the map for an additional \$4.00. Better yet receive all 5 areas for only \$8.00 more! As always, you can call as often as you wish and talk as long as you like. No need to wait until evenings or weekends with Metro Access! We even offer a REVERSE ACCESS feature which allows friends and family to call you at your home free of long distance charges.

SEVEN DAY FREE TRIAL

Try us free for seven days. Our friendly and knowledgeable customer service representatives will assist you with any questions you might have.



FOR IMMEDIATE SERVICE JUST DIAL

416-601-1200

