

EVERGREEN TRAILS OF BALLANTRAE

Still looking for your dream country home?...

**Don't Delay
Phase I Going Quickly!**

FOUND!

Situated just east of Ballantrae, **Evergreen Trails of Ballantrae** comprises of 54 Estate Lots, each at least **2 acres** in size, connected by a unique Linear Park. Some of these lots overlook Island Lake, some are wooded - all are gorgeous!!

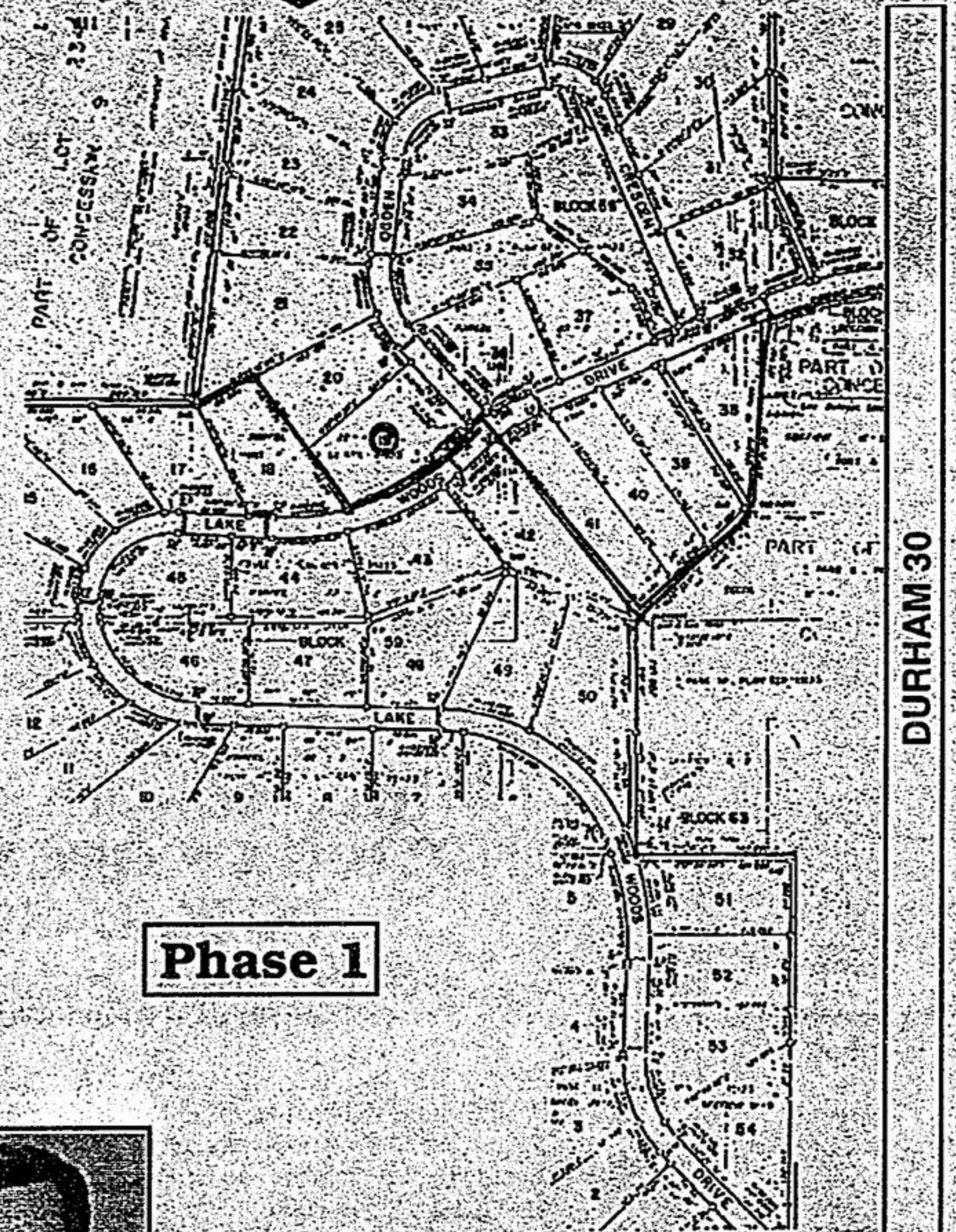
The Phase I road is scheduled for June/July '97. First home occupancy November '97.

If you're interested in walking the trails and previewing the lots or just want more information on our customized house prices, and the proposed restrictive covenants and architectural controls are designed to protect your investment which start in the \$300,000 + range, please call

Ian Batt*

(905) 642-2288

(416) 286-3993



AURORA SIDE RD.

Re/Max Rouge River Realty Ltd.

