

# Library's popular giant book sale on this weekend

**TUESDAY, MAY 6**  
**Heart and Stroke Foundation Meeting**

The Whitchurch-Stouffville Chapter of The Heart and Stroke Foundation is hosting its annual meeting and appreciation tea in the hall at the Pentecostal Church,

Main St. Stouffville at 7:30 p.m. All volunteers welcome.

**Parkinsons Support Group Meeting**

The Markham-Stouffville Parkinsons Support Group will be meeting at 7:30 p.m. in the com-

munity room of the Markham Police Station on McCowan Rd. All those interested are welcome. Guest speaker and question period followed by refreshments.

**THURSDAY, MAY 8**  
**Giant Annual Book Sale**

Whitchurch-Stouffville Public Library, 6240 Main St., Stouffville is holding their annual book sale starting today to Sunday, May 11. Please call 640-2395 for times and further information. Admission is free.

## Community Calendar

**SATURDAY, MAY 10**

**Bus Trip to McMichael Gallery**  
The Latham Gallery's Mothers and Others bus trip to McMichael Canadian Art Collection. Members \$20; non-members \$30. Transportation, gallery admission, guided tour, luncheon, browsing time included. Call 640-2395 for information.

**Spring Celebration**

Spring celebration and appreciation day for all ladies at Churchill Baptist Church, Ninth Line north of Aurora Rd. 10 a.m. to noon. Featuring Gail Pasternack Pottery and Cotton Ginny fashion show. Refreshments and free babysitting. Call 640-8813.

**Leukemia Research Bake Sale**

Bake sale at 9 a.m. at Clock Tower, Main St. Stouffville. To donate baking call 640-5537. Watch for hot dog sales at A&P, Westons and Bank of Commerce.

**Spring Flower Sale**

Stouffville Lioness annual spring flower sale 9 a.m. to 1 p.m. and Richardson Lodge Trash and Treasure Sale 8 a.m. to 4 p.m. at Richardson Masonic Hall, 279 Second St. and 9th Line, N. For further info. please call Darlene 640-5294 or Cathy 642-1645.

**Prayer for Haiti**

An invitation to mature Christians to join us in corporate prayer for the country of Haiti, 7:30 p.m. Stouffville Pentecostal Church, 6362A Main St., (side entrance). For more info. call and leave message 416-372-8614.

**MONDAY, MAY 12**

**Stouffville Horticultural Society Meeting**

Arrive early, 7 p.m. for "members grown" plant sale. 8 p.m. head-gardener Bruce Scott will present a slide show on "The Gardens of Casa Loma". At Stouffville United Church basement, 34 Church St. N. New gardeners welcome. For more info. call 640-0784.

**WEDNESDAY, MAY 14**

**Women's Morning Coffee**

Stouffville-Goodwood Christian Women's Club invites you to a morning coffee at Parkview Village Auditorium, 12184 Ninth Line South, Stouffville, 9:15 to 11:15 a.m.; \$5 incl. "Spring Garden Party". For reservations/cancellations call Merle at 642-0160.

**THURSDAY, MAY 15**

**Flirting with Fashion**

SDSS is holding "Flirting with Fashion" at 8 p.m. (doors open 7:30 p.m.) Cost: \$5/person.

**FRIDAY, MAY 16**

**New Museum Exhibit**

Whitchurch-Stouffville Museum's 1997 exhibit: "19th Century Nightlife" is open to the public today. See how families and friends spent their quality time in an era before electricity, central heating, etc. For further info. please call 727-8954.

**SUNDAY, MAY 18**

**International Museums Day**

Why not celebrate by visiting the Whitchurch-Stouffville Museum, 14732 Woodbine Ave. just south of Aurora Rd. Visit new exhibit and tour five historic buildings. Call 727-8954.

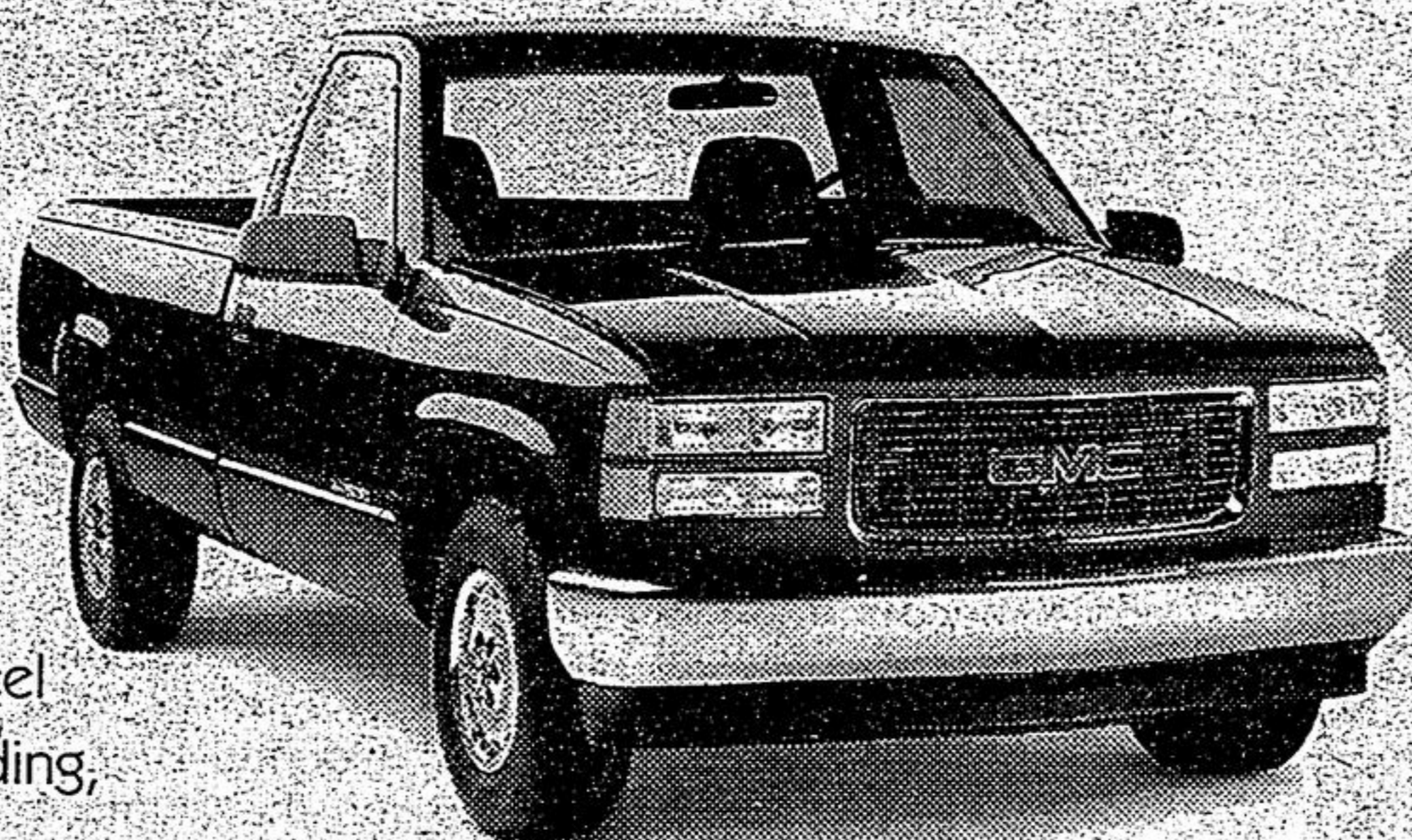
TRUCK DEALERS

YOUR GMC

## IN THIS WORLD, IT'S SURVIVAL OF THE FITTEST. MEET THE FITTEST.

**1997 KODIAK SIERRA  
REGULAR CAB**

200 HP Vortec 4300 SFI V6 engine, 4-speed automatic transmission, cloth seats, 4-wheel ABS, dual air bags, air conditioning, deluxe chrome grille, galvanized steel 8 ft. cargo box, two-tier loading, speed sensitive steering



**\$199\***  
(36 MONTHS / \$2,100 DOWN)

**\$20,599**  
(EXCLUDES FREIGHT \$89)



Offer Available For A Limited Time Only.

# KODIAK SIERRAS



**\$233\***  
(36 MONTHS / \$2,100 DOWN)

**\$23,859**  
(EXCLUDES FREIGHT \$89)

**1997 KODIAK SIERRA  
EXTENDED CAB**

230 HP Vortec 5000 SFI V8 engine, 4-speed automatic transmission, air conditioning, 4-wheel ABS, dual air bags, cloth seats, cruise control, tilt-wheel™ steering, chrome wheels, galvanized steel cargo box, two-tier loading, speed sensitive steering



### See Your Dealer Now For Details!

Don't forget to use your GM Card Earnings toward The Total Purchase Price or lease down payment of your next new GM vehicle!

What's your card done for you lately?

GM Card Earnings may be applied toward The Total Purchase Price or lease down payment of any eligible new General Motors Vehicle. Fleet sales and commercial leases excluded. For complete details on vehicle eligibility, see your General Motors Dealer.

**You Should Know This:** \*Based on a 36 month lease for 1997 GMC Sierra Regular Cab 15H and 1997 GMC Sierra Extended Cab 15B equipped as described. Annual kilometre limit: 20,000 km. \$0.08 per excess kilometre. A minimum down payment of \$2,100 and \$300 security deposit are required. OAC. Other lease options available. †Freight \$895. ‡Licence, insurance and taxes are not included. Dealer trade may be necessary. Dealer may sell/lease for less. See Dealer for details. ††Financing on approved GMAC credit only. Example: \$10,000 borrowed at 3.9% APR, the monthly payment is \$225.33 for 48 months. Cost of borrowing is \$815.84. ‡Total obligation is \$10,815.84. Down payment may be required. †††Offers apply to 1997 new or demonstrator models only and applies to qualified retail customers only. Limited time offers which may not be combined with other offers. See Dealer for details.

**3.9% VALUE  
FINANCING**  
ON SELECTED MODELS

Get what you want from your GMC Truck Dealers

