

## Calendar

## THURSDAY, APRIL 24

**Texas Tea**  
Stouffville Missionary Church gymnasium, 6500 Main St. Stouffville is the location of the Texas Tea featuring denim fashions by Patrick X, western melodies with Eleanor Bailey, and speaker Ann Levitt. Start time is 7:30 p.m.

**Community Living Skills Group**  
Markham Stouffville Hospital-Mental Health System is holding educational sessions on Thursdays 11 a.m. to noon. Today: Conflict Resolution I, May 1: Conflict Resolution II. Call secretary 472-7011 prior to day of session, arrive 15 minutes early to register.

## FRIDAY, APRIL 25

**Therapeutic Touch**

The Therapeutic Touch Support Group meets at 7:30 p.m. at the Markham Stouffville Hospital auditorium. For information, call 294-2833.

**Standard First Aid/CPR Course**

St. John Ambulance is offering standard first aid with basic rescuer CPR in Richmond Hill beginning today, April 26 and 27. For information and to register call 1-800-268-1677.

## MONDAY, APRIL 28

**Christian School Open House**

Stouffville Christian School open house from 9 a.m. to 11 a.m. Junior Kindergarten to Grade 8. Call 640-3297 for further information.

## WEDNESDAY, APRIL 30

**Bankruptcy Workshop**

Free workshop, bankruptcy, how to manage your money. To take place at Aurora United Church, 10 to 11:30 a.m. Child care available. Call York Region Aim For Change to register at 905-727-5837.

## THURSDAY, MAY 1

**Bus Trip to McMichael Gallery**

The Latcham Gallery's Mothers and Others bus trip to McMichael Canadian Art Collection. Members \$20, non-members \$30. Transportation, gallery admission, guided tour, luncheon, browsing time included. The bus trip takes place Saturday, May 10 and registration is required by May 1. Call 640-2395 for information.

## FRIDAY, MAY 2

**Sacred Music Night**

You are invited to the 27th annual Sacred Music Night at St. James Presbyterian Church at 8 p.m. The Harmony Four Quartet of Brampton is featured. Free will offering. Child care available. Refreshments will follow the service.

**Donations for Railway Auction**

Donate usable items such as furniture, glassware, china, collectables, small appliances, tools, musical instruments, etc. to be auctioned on Friday, May 23 at Phoenix Auction Barn, proceeds going to the York-Durham Heritage Railway. For info, or pick-up, call 640-5132 or 640-6613.

## SATURDAY, MAY 3

**Car Wash and Road Toll**

Car wash and road toll for the Stouffville Volunteer Fire Fighters

Association. Portion of proceeds will go to local charities, 10 a.m. to 2 p.m.

## MONDAY, MAY 5

**Diabetes Association Meeting**

The York Region Diabetes Association's meeting is at

the Markham Police Station (McCowan Rd. and Carlton Ave., Markham). Guest speaker is Dr. Stephen McMahon, orthopedic surgeon, discussing complications and pitfalls of orthopedic surgery. Call 905-887-9639 for details.

## THURSDAY, MAY 8

**Giant Annual Book Sale**

Whitchurch-Stouffville Public Library, 6240 Main St., is holding its annual book sale starting today to Sunday, May 11. Please call 640-2395 for times and further information. Admission is free.

**Peace of Mind Celebration**  
Canadian Mental Health Assoc. York Region presents Peace of Mind Celebration free of charge. Demonstrations and workshops throughout day at Howard Johnson Hotel, Aurora, 15520 Yonge St. Call 416-777-2115.

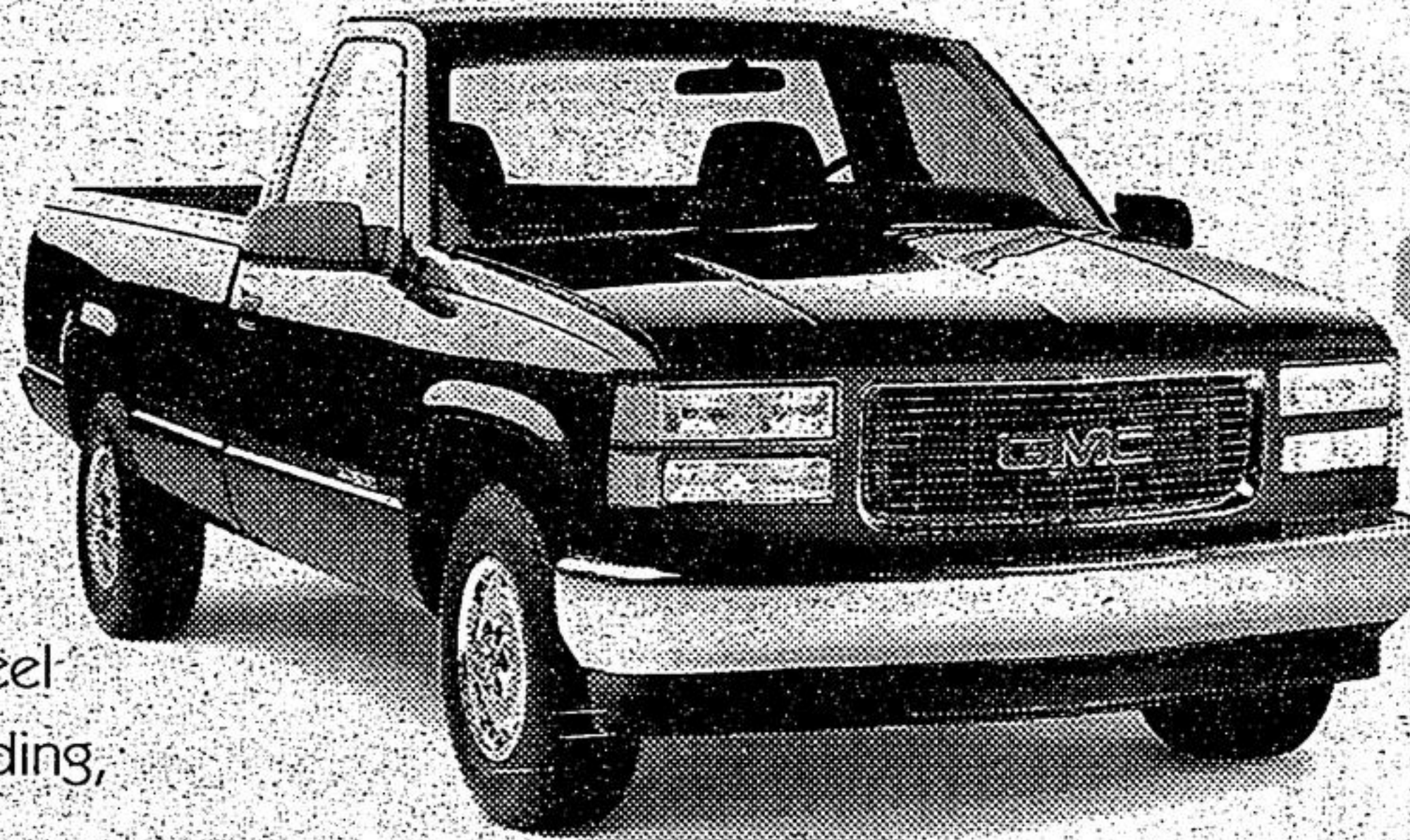
TRUCK DEALERS

YOUR GMC

## IN THIS WORLD, IT'S SURVIVAL OF THE FITTEST. MEET THE FITTEST.

### 1997 KODIAK SIERRA REGULAR CAB

200 HP Vortec 4300 SFI V6 engine, 4-speed automatic transmission, cloth seats, 4-wheel ABS, dual air bags, air conditioning, deluxe chrome grille, galvanized steel 8 ft. cargo box, two-tier loading, speed sensitive steering



**\$199\***  
(36 MONTHS / \$2,100 DOWN)

**\$20,599\***  
(EXCLUDES FREIGHT \$89)



Offer Available For A Limited Time Only.

# KODIAK SIERRAS



**\$233\***  
(36 MONTHS / \$2,100 DOWN)

**\$23,859\***  
(EXCLUDES FREIGHT \$89)

### 1997 KODIAK SIERRA EXTENDED CAB

230 HP Vortec 5000 SFI V8 engine, 4-speed automatic transmission, air conditioning, 4-wheel ABS, dual air bags, cloth seats, cruise control, tilt-wheel™ steering, chrome wheels, galvanized steel cargo box, two-tier loading, speed sensitive steering



## See Your Dealer Now For Details!



Don't forget to use your GM Card Earnings toward The Total Purchase Price or lease down payment of your next new GM vehicle!

What's your card done for you lately?

GM Card Earnings may be applied toward The Total Purchase Price or lease down payment of any eligible new General Motors Vehicle. Fleet sales and commercial leases excluded. For complete details on vehicle eligibility, see your General Motors Dealer.

**3.9% VALUE FINANCING**  
ON SELECTED MODELS

**You Should Know This:** \*Based on a 36 month lease for 1997 GMC Sierra Regular Cab 15H and 1997 GMC Sierra Extended Cab 15B equipped as described. Annual kilometre limit: 20,000 km. \$0.08 per excess kilometre. A minimum down payment of \$2,100 and \$300 security deposit are required. OAC. Other lease options available. †Freight \$895; licence, insurance and taxes are not included; Dealer trade may be necessary. Dealer may sell/lease for less; See Dealer for details. \*\*Financing on approved GMAC credit only; Example: \$10,000 borrowed at 3.9% APR, the monthly payment is \$225.33 for 48 months. Cost of borrowing is \$815.84. Total obligation is \$10,815.84. Down payment may be required. ††Offers apply to 1997 new or demonstrator models only and applies to qualified retail customers only. Limited time offers which may not be combined with other offers. See Dealer for details.

Get what you want from your GMC Truck Dealers

