

Region

Service board would swamp York; King

(From page 1)

mate the municipalities of Toronto, North York, Etobicoke, Scarborough, York and East York into one unified city

called Toronto.

Once that's done, it's expected that the next phase including this area will be on the agenda.

If a GTA service board is established, the mayor of Whitchurch-Stouffville would sit across the table from a mayor who represents 100

times as many citizens, said King.

"There isn't a mayor from the 905 area who could sit as an equal with the mayor of the

new City of Toronto. What chance would any under-served or under-populated area have in this context?" said King.

Education

Eleventh hour negotiations last stand to avoid strike

(From page 1)

offer proposes "several other significant changes" that "severely restrict the board's ability to improve system efficiencies."

"They're trying to make the teachers appear greedy," responded Women Teachers' Association president Joan

Heeler.

Provincial mediator Kevin Burkett imposed a news blackout which prevents either side from discussing any costs associated with the offer.

The board has said it wants the new contract to cost \$7 million less. Heeler said Burkett shuttled in a Thornhill hotel

between board and union negotiators, some of whom, at one point, met face to face. Longer talks were expected yesterday, she added. "Saturday, I don't think we're going home." Prin-

cipals at local schools continued to make arrangements with volunteers to care for children on Monday, but were told to direct reporters' calls to the board. Teachers will not stop

parents from crossing picket lines at schools, pledged Harold Vigoda, a union field secretary.

The board has a hotline for parents at 1-800-546-0709.

Town's future subject of meeting Tuesday of new local group

(From page 1)

Mayor Wayne Emmerson pointed out.

A Thursday evening meeting attracted local residents, representatives of the local historical society, two members of Whitchurch-Stouffville Council and the former president of the York Durham Heritage Railway Association.

The general consensus is: people do not feel informed about what's in store for the future of Whitchurch-Stouffville from a planning perspective, said Major.

Major said she expects a "full house" at a public meeting on Tuesday. Beginning at 7 p.m., Major will outline the association's concerns.

Emmerson said the welcome mat will be in place for the new group.

"It's great they're taking an interest in their community," he said.

Residents are also being asked to join the group by signing a membership form attached to the flyer.

"We're getting a positive response so far," said Major. "We just feel we have not been listened to by council."

Group concerns include: having the town's population double, traffic congestion and industrial development surrounding the town.

"Any growth has to be people-friendly," said Major.

The new group wants a priority on walking, and not on driving in the downtown area,

said Major. "The business core is important but proper planning must be in place," she added.

Emmerson is encouraging public participation at the meeting.

"We always have," said the mayor.

However, the O'Brien Avenue resident disagrees: "People have attended the (Secondary Plan) meetings but we feel frustrated. We don't feel that our voice has been heard," she said.

When it comes to planning, Major is not impressed with the process so far. Whitchurch-Stouffville "suffers from bad planning or no planning," she said.

The new group's goal is to preserve and improve the heritage of the town and to ensure that the soon-to-be struck Secondary Plan recognizes and protects the "existing character of our town and builds on its heritage for future development," the flyer states.

Emmerson said town planners and the new group seem to have the same objectives.

"This is great. We feel the same," he said.

The flyer states that local council has a plan that could double the population of Stouffville, put residential and industrial development all around the town including 700 acres south of town and add traffic to an already congested traffic flow.

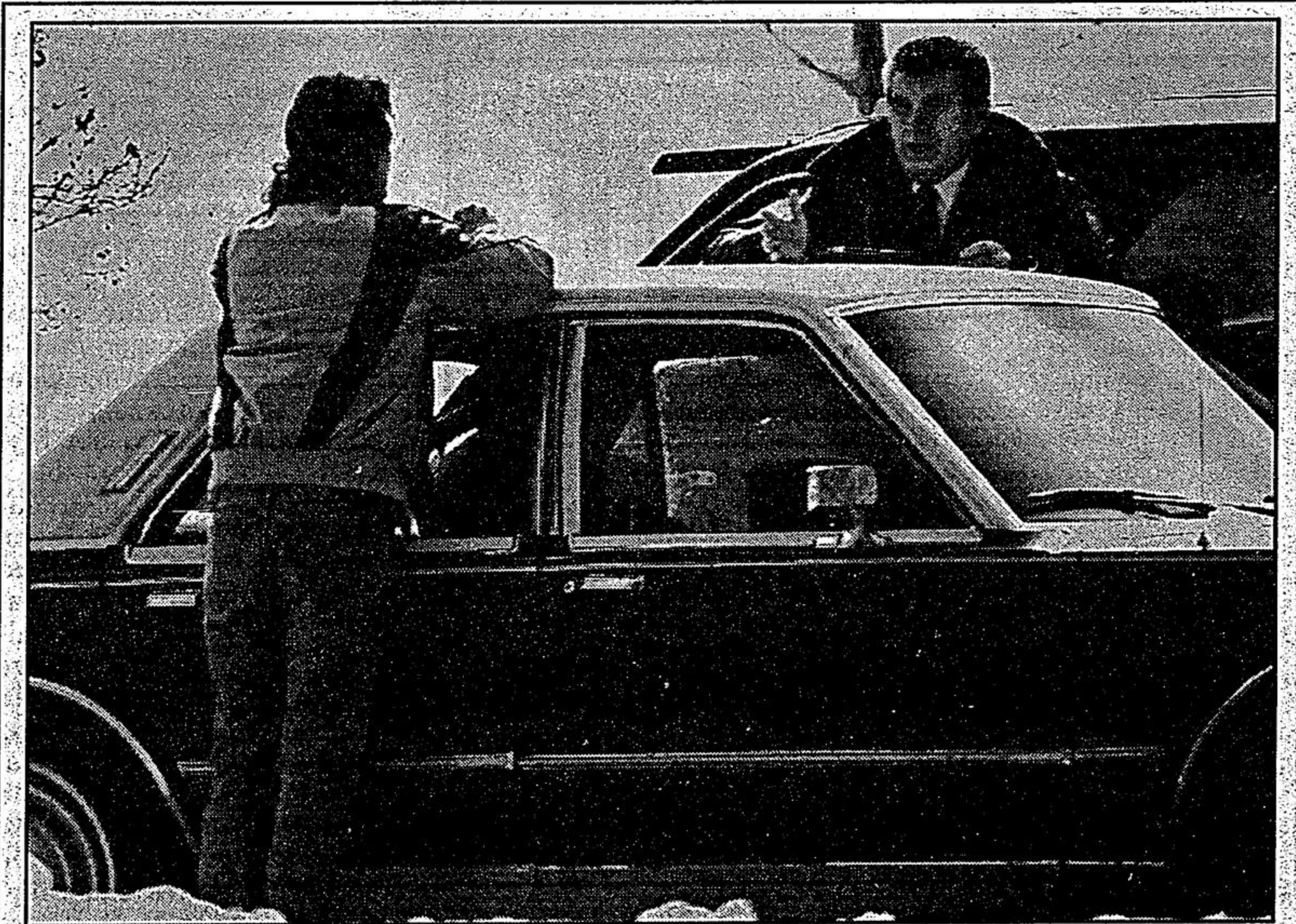
Council to grant \$330,000 for roads

A total of \$330,000 will be spent on local roads this year if Whitchurch-Stouffville Council gives a plan the final nod.

Last week, local council included the road work in the '97 budget expected to be ratified on Tuesday.

Money on roads includes \$135,000 for Edward Street between Main and Second streets. The rest of the money will be spent on part of Bethesda Road and Market Street.

~ Joan Ransberry



Propane incident

Two men, including a Goodwood resident, received first and second degree burns to their faces on Thursday morning after a propane torch ignited a gasoline tank on Durham 21. They were driven to hospital by a third man. Here, a witness is interviewed shortly after the incident.

Photo/STEVE SOMERVILLE

Transit shortfall picked up by taxpayer

A \$11,000 shortfall by Whitchurch-Stouffville Mobility Transit will be picked up by the taxpayers.

Last week during the town's budget deliberation, Whitchurch-Stouffville Council gave the nod to cover the transit ser-

vice's annual shortfall.

Wilf Morley, spokesman for Whitchurch-Stouffville Mobility Transit, reported that service ridership rose from 3,070 trips in '95 to 4,087 trips in '96.

The service which is used by seniors and the physically challenged is avail-

able 24 hours a day, seven days a week.

The local mobility transit is operated 100 per cent by volunteers, stressed Morley. Transit officials are worried that provincial funding for such services will dry up in '98.

~ Joan Ransberry

Watch for these Flyers on Saturday, March 22th, 1997

LOBLAWS/SUPERCENTRE
BIWAY
SEARS
COUPON CLIPPER
PRIMO PAVING
A&P
WESTONS
IGA - STOUFFVILLE

DOMINION
EM PRO TRAINING
PAPA KARL'S PIZZA
LOBLAWS
PRIMO GLASS & WINDOWS - NEW HOME
OWNERS SPRING SAVINGS
CANADIAN TIRE - RICHMOND HILL
PRIMO GLASS & WINDOWS - INSTALLED DOORS & WINDOWS

Watch for these Flyers on Tuesday, March 25th, 1997

Shoppers Drug Mart

*Selected Areas Only.

WE'RE FIRST IN DISTRIBUTION

We've delivered 9,745,920 flyers door-to-door, so far this year. If you would like your flyers delivered by the best, please call:

ARLENE MADDOCK at 640-2100.

Stouffville

The Tribune

Attention Flyer Advertisers

We can deliver your flyers for as little as 3.5 cents apiece, in Markham, Unionville, Milliken, Stouffville, Uxbridge, Clarendon, Dickson Hill, Locust Hill, Gormley, Goodwood, Victoria Square, Brougham, Hagerman Corners, Box Grove, Cedar Grove, Boltonville, Sandford, Leaskdale, Greenbank, Udon, Sunderland, Zephyr, Ashburn, Cannington, and all adjacent rural route areas.

We can deliver your flyers, using the most up to date market demographics, including: Census Tract, Lifestyles, FSA, Neighbourhoods, etc. Call us to discuss your needs.

We can deliver on the day you want to the area you want, any quantity up to 50,150. For Distribution Inquiries call:

Stouffville: (905) 840-2100, or Fax: (905) 640-5477.