

Letters

Tragic school bus accident in Aurora deserved local coverage

Dear Editor,
I am saddened and disappointed that you chose to ignore in your news coverage the school bus accident in Aurora (Nov. 15) that claimed the life of five-year-old Jacob Parke.

I suppose some would argue that this paper has no business reporting on accidents which occur in distant towns; but the issue of safety (or lack thereof) is one that affects every parent who must rely on the busing system to transport their children to and from school intact.

After all, the policies governing school bus safety in Aurora are the very same as those in Whitchurch-Stouffville — and every other community in York Region.

One would think that the existence of serious flaws in this system is ample cause for concern no matter where one lives.

What happened to Jacob could have happened to any child - in fact, exactly 24 years ago, this very community was reeling from the tragic death of one of our own youngsters (eight-year-old Jo-Anne Coughlin) in precisely the same way.

It is appalling to think that in 24 years, not a single thing has changed in terms of school bus safety in this region.

Publicizing this issue is not a matter of sensationalizing another community's pain, but of affording due respect (and sympathy) to our neighbors, and of raising public awareness of the very real dan-

ger our children face every time they board a school bus.

We owe it to all our children - but particularly to the memory of the precious young lives that have been lost - to rally behind the community of

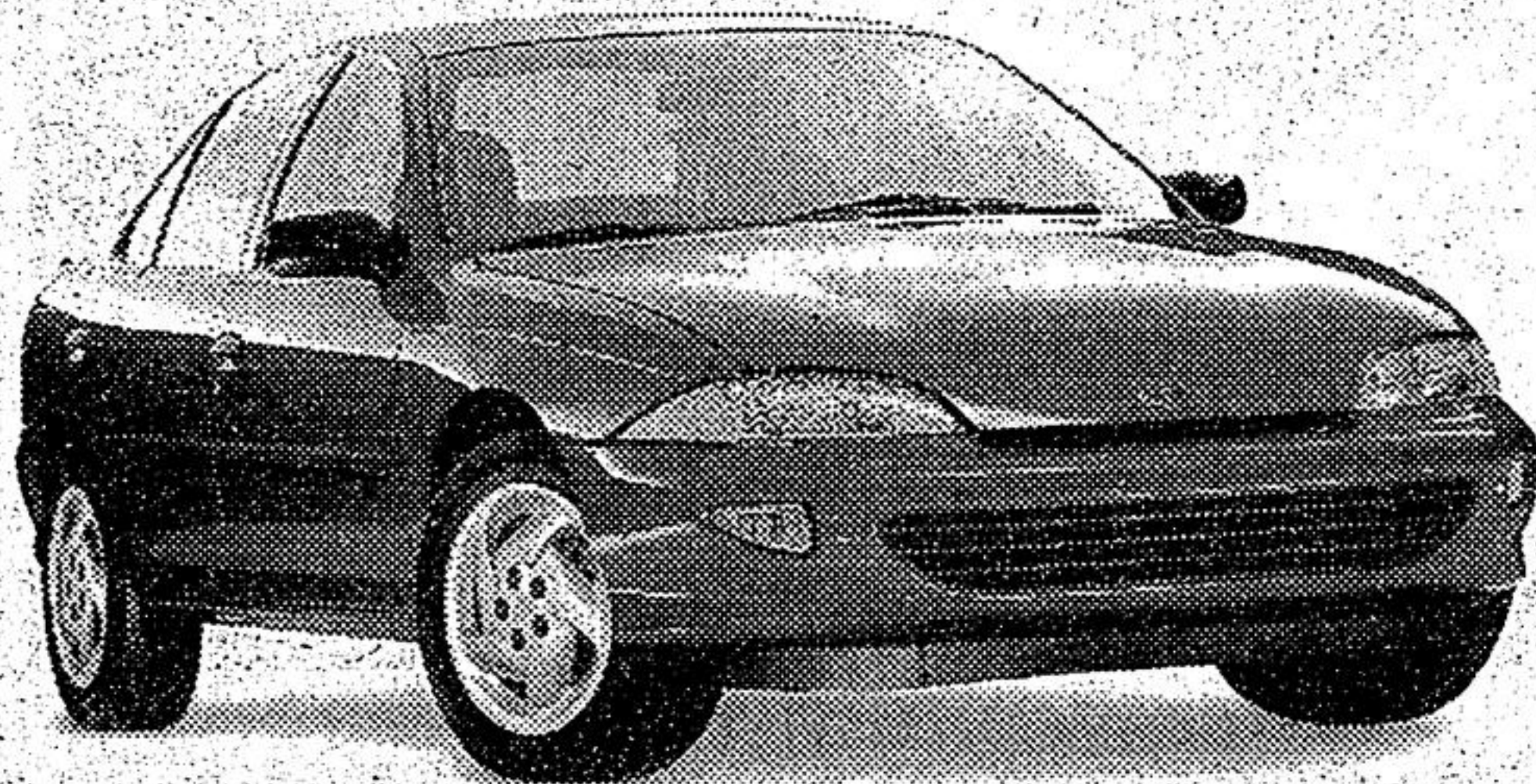
Aurora in working for changes to a woefully inadequate school transportation system. Somehow, I expected more from my community newspaper than the introverted view of the world it

seems to uphold. Does tragedy have to strike in front of our very noses - yet again - before we finally see fit to leave off contemplating our navels and add our voices to the effort?

Z. Kamocki
Stouffville

Editor's Note: Unfortunately, because of space constraints, *The Tribune* can only cover news within Whitchurch-Stouffville.

No, this is not a typo.



'97 Cavalier Sedan

\$229*
SMARTLEASE
per month/36 months
\$1100 down

Both come generously equipped with: air conditioning, 2.2 litre engine, automatic transmission, reclining front bucket seats, AM/FM cassette, body side mouldings, dual air bags, carpeted floor mats, standard 4 wheel ABS, intermittent wipers, 24 Hour Roadside Assistance

your choice for a limited time



'97 Cavalier Coupe

Chevrolet Cavalier
still Canada's #1 selling car

Hurry, this offer ends January 11th at your Chevrolet Store

LOTTERY CALENDAR WINNERS
November 1996

\$30⁰⁰ Winners

- J. Allen
- J. McGivern
- R. Pogue
- L. Powell
- F. Hollingshead
- P. Dufton
- C. Trowse
- L. Slade
- J. Allen
- P. Martindill
- H. Scevo
- J. Weidlin
- K. Forsythe
- M. Evans
- D. McGrath
- C. Clark
- D. James
- L. Puppella
- R. Campbell
- A. Davis
- H. Gourlie Sr.
- D. Snoddon
- G. Metcalfe
- C. Ledrew
- S. Lang
- D. Menzies

\$50⁰⁰ Winners

- C. Bongard
- R. Stemp
- R. Hickey
- H. Crawford

\$1000⁰⁰ Winner

M. Bagshaw

This ad sponsored by
The Sound Shop &
Ron Noble Ins. Ltd. of Uxbridge



Don't forget to use your GM Card. Earnings toward the purchase or lease down payment of your next new GM vehicle.**

SMARTLEASE
You could get lower monthly payments on any GM car or truck, call 1-800-32 SMART

You should know this: *Based on a 36 month lease for Cavalier Coupe 1.8/Cavalier Sedan 1.8 equipped as described. Annual kilometre limit 20,000 km. \$0.08 per excess km. A minimum down payment of \$1,100 and \$500 security deposit are required. Offer applies to 1997 new or demonstrator models. Dealer order or trade may be necessary. Quantities limited. Freight (\$420), licence, insurance and taxes are not included. Dealer may lease for less. Offer applies to qualified retail customers only. OAC. Limited time offer may not be combined or used with other offers. Other lease options available. See your SW East and Cent. Dealer for details. **TD and GM are licensed users of Marks. Subject to GM Card guidelines.

