

Best Homes Out of Town

EVERGREEN TRAILS OF BALLANTRAE

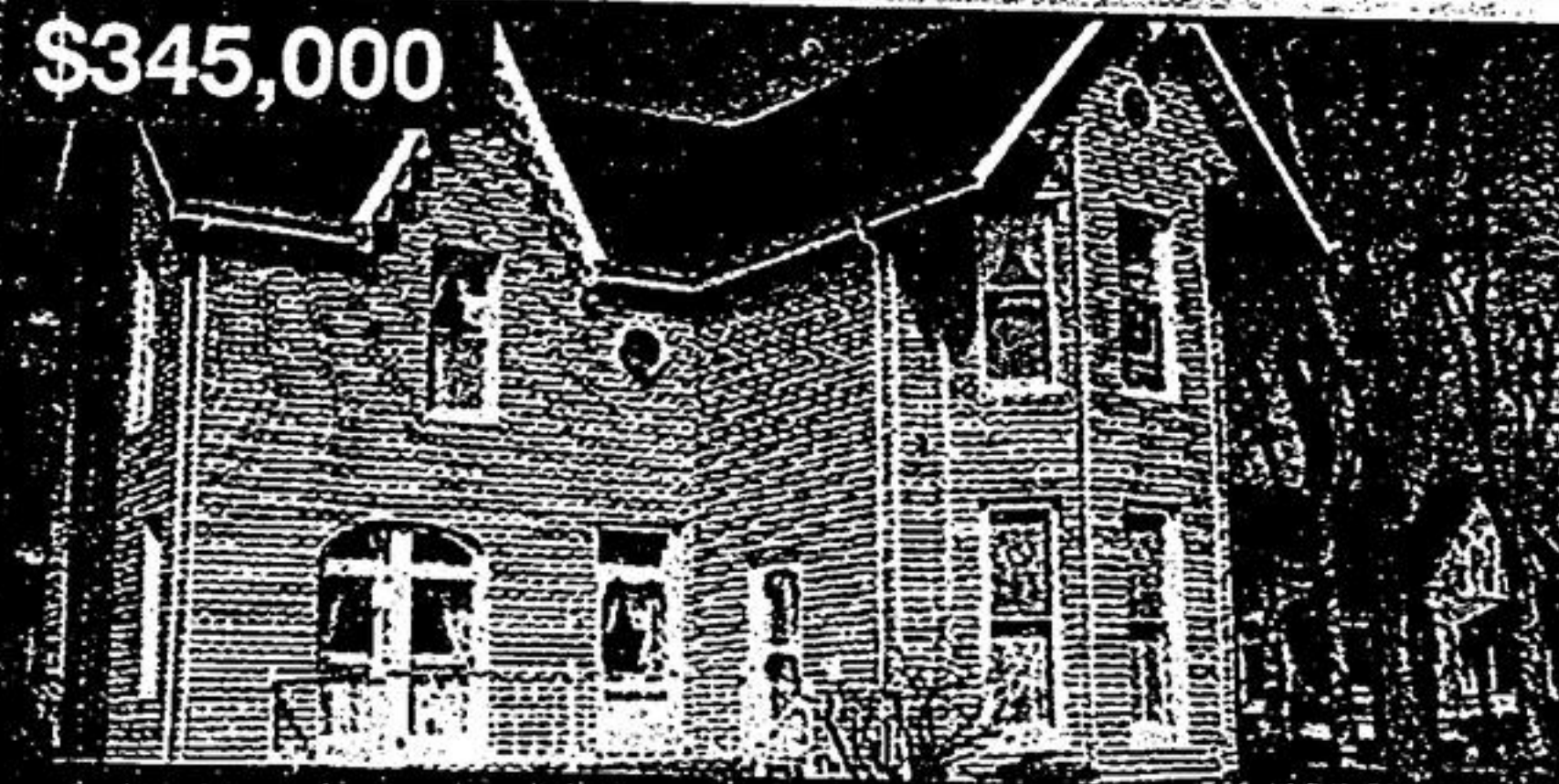
Still looking for your dream country home?

FOUND!

Situated just east of Ballantrae, Evergreen Trails of Ballantrae comprises of 24 estate lots, each at least 2 acres in size, connected by a unique Linear Park. Some of these lots overlook Island Lake, some are wooded, all are gorgeous!! If you're interested in walking the trails and previewing the lots or just want more information on our customized house prices which start in the \$300,000 range, please call:

Ian Batt*, The Double Advantage Team. (905) 642-2288
Re/Max Rouge River Realty Ltd.

\$345,000



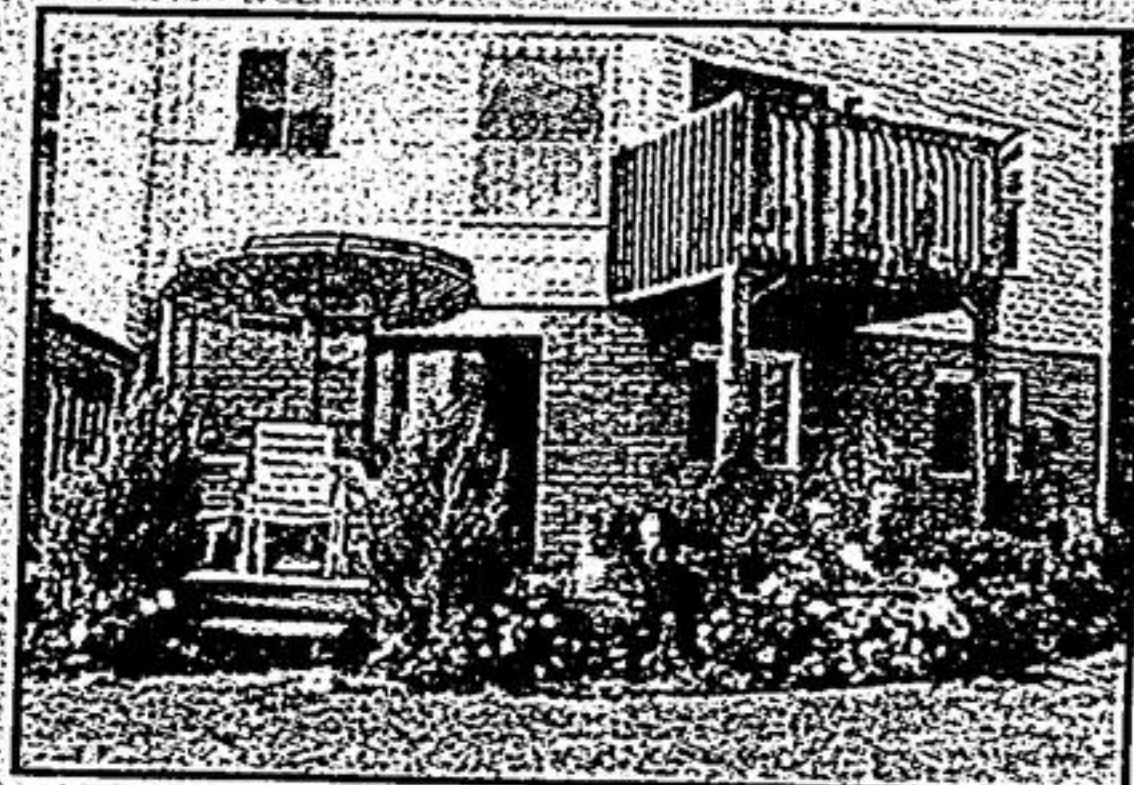
Call: JOHN POLLARD* (905) 477-0011

HOME FOR CHRISTMAS!

Just decorate with holly & relax! 10 ft. ceilings, pine floors, original trim, fireplace, updated heating & kitchen, 4 bedrooms plus 2 bdrm. mn. flr. in-law suite, surrounded by Century homes, bring the tree & enjoy the holidays in this unique home.

RE/MAX
All Stars Realty Inc.
(905) 477-0011

Before you look at another country home, there are 10 things you better know about purchasing rural property. If you don't, it could cost you thousands of dollars.



CALL
LARRY OLSON**
FOR A FREE
CONSULTATION

K.R. MAY REAL ESTATE LIMITED



Call: LARRY OLSON** (905) 642-2223

\$187,900



Call: JUDITH STACEE F.R.I.*** (905) 837-1054

LUXURY ALL STONE "CHATEAUX-BY-THE-PARK" PICKERING

*2 car u/g pkg. / dir. access *Gas fireplace, French drs. *Huge master w/ens. bath *Custom 2120 sq. ft. *Owner transferred *Very unique community

in.com
New Choice Realty Ltd. Inc.
1480 Bayly St. Unit 8
Pickering
(905) 837-1054

\$549,900

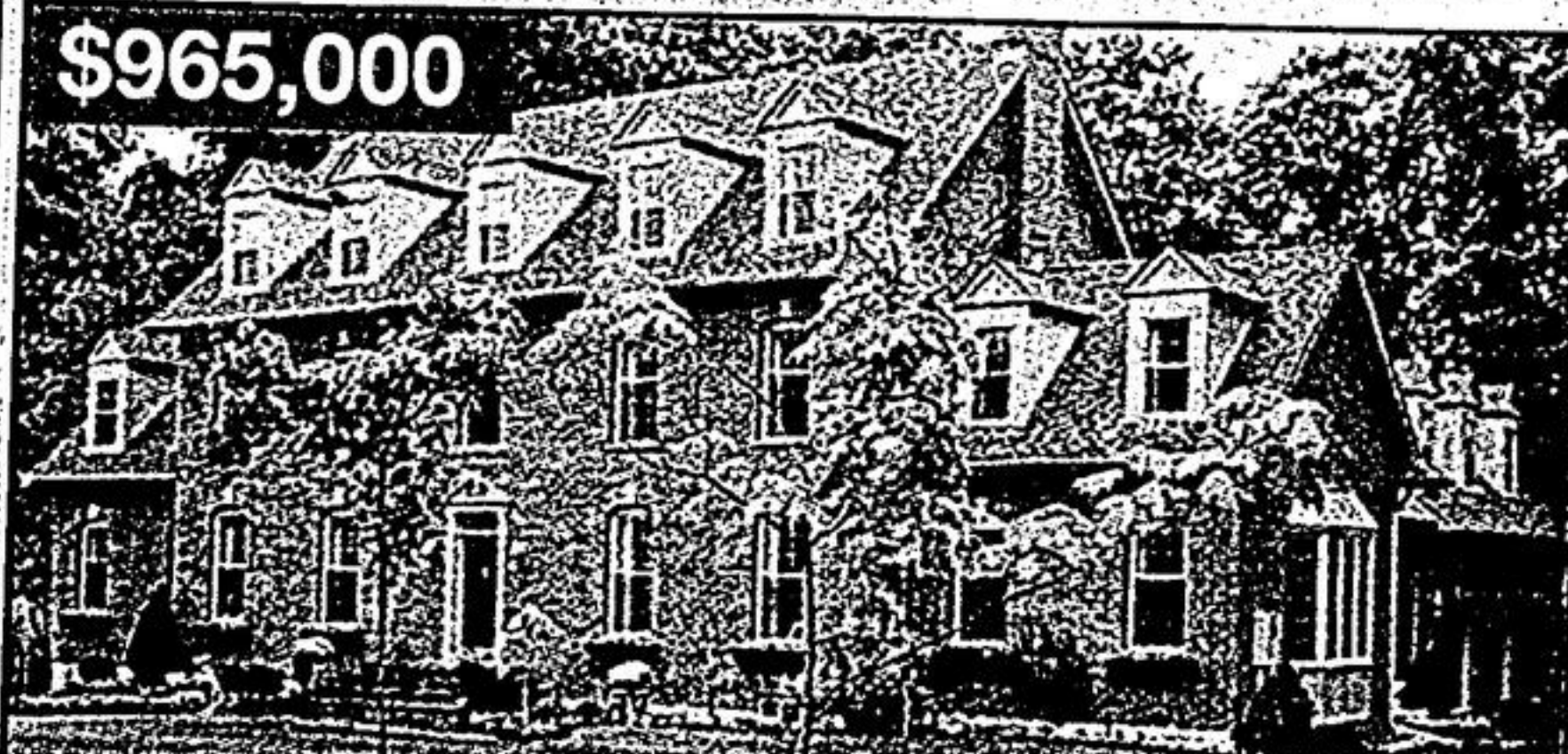


Call: BRUCE & GLORIA KEITH* (905) 853-5955

SHARON - CUSTOM BUILT BY OWNER
4+2 bdrms. 4-1/2 baths. 2 studio/suites, 3.5 kms. N/E of Hwy. 404. 1.8 acres. Backs on to forest. A home of distinction!

Sutton
GROUP
Future Realty
1091 Gorham St.
Suite 102, Newmarket
Tel. Line
(416) 229-4835

\$965,000

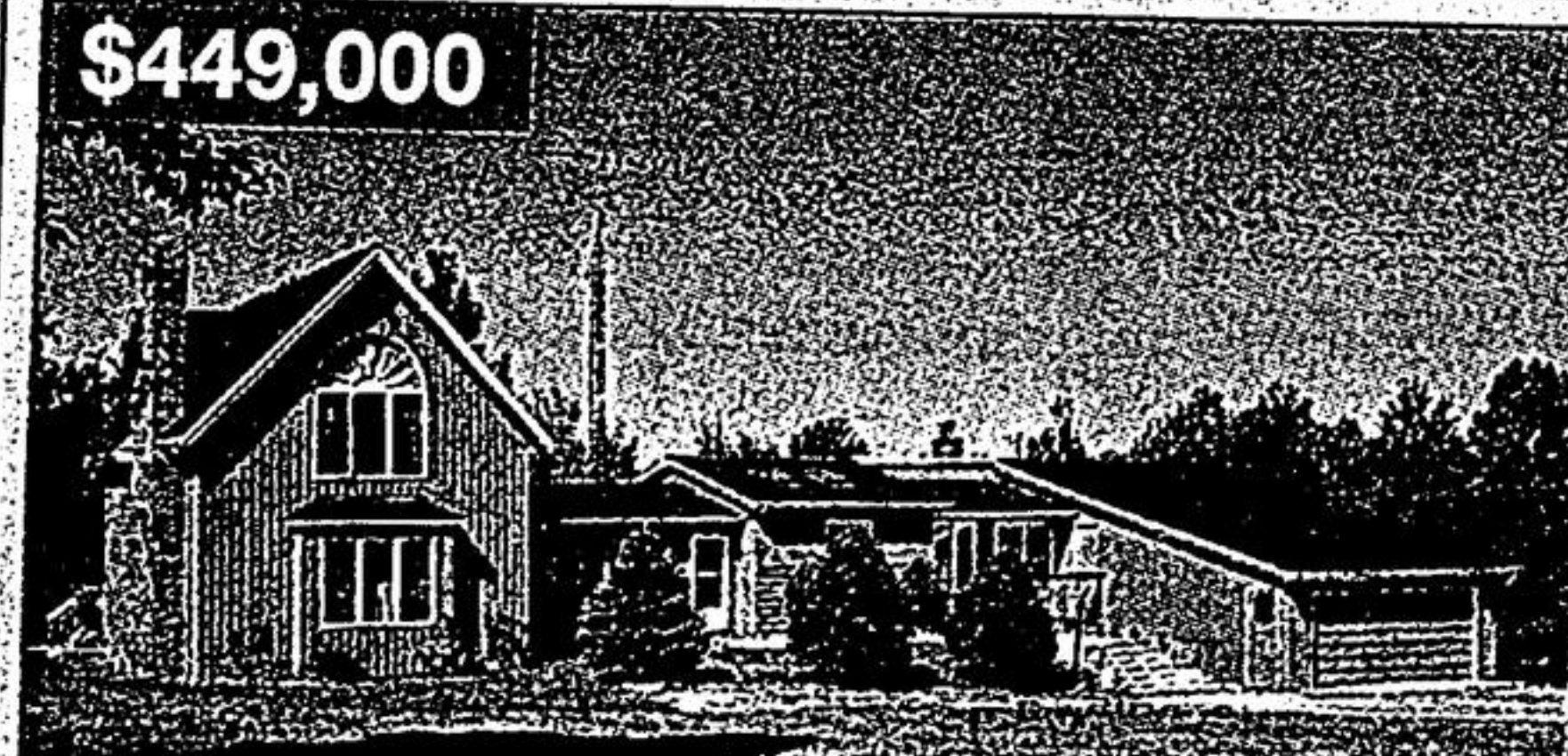


Call: JOAN MCDUGALL** (416) 213-7209

IMPRESSIVE "WILLIAMSBURG"
Exquisite 6000 sq. ft., 6 bedroom, 5 1/2 bath home, perfectly maintained, gorgeous kitchen with French door access to brick terrace overlooking wooded ravine. 2-1/4 acres Whitchurch.

ROYAL LEPAGE
(416) 213-7209

\$449,000



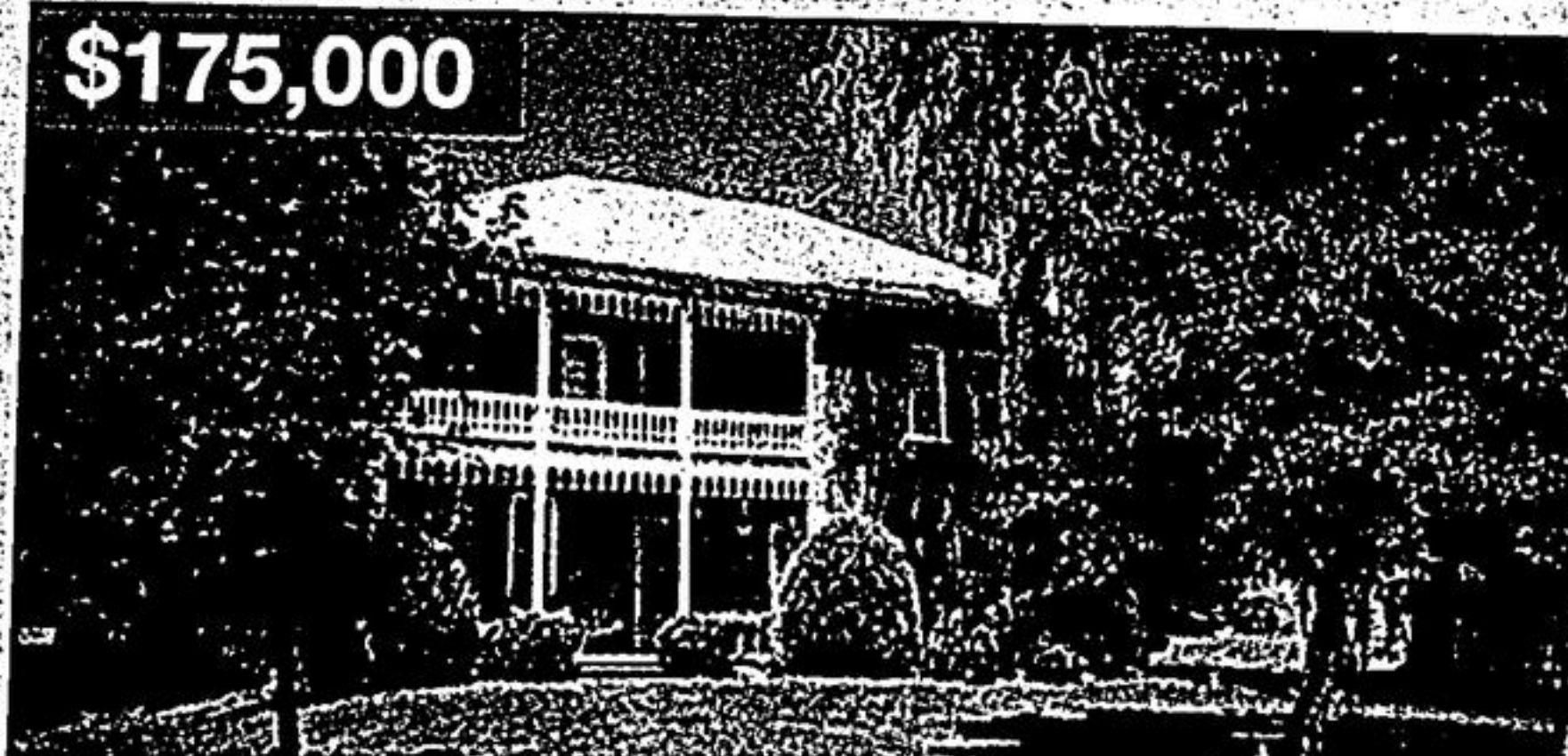
Call: LEE WELDON** (905) 852-6143

SPREAD OUT!

In this fabulously finished over 3500 sq. ft. open concept residence. Oak floors & trim, cathedral ceilings, separate ground level in-law suite, Pool, 20'x40' additional garage, 25.6 acres of wonderful private grounds. Uxbridge.

RE/MAX
Scugog Realty Inc.
(416) 510-1284
(905) 852-6143

\$175,000

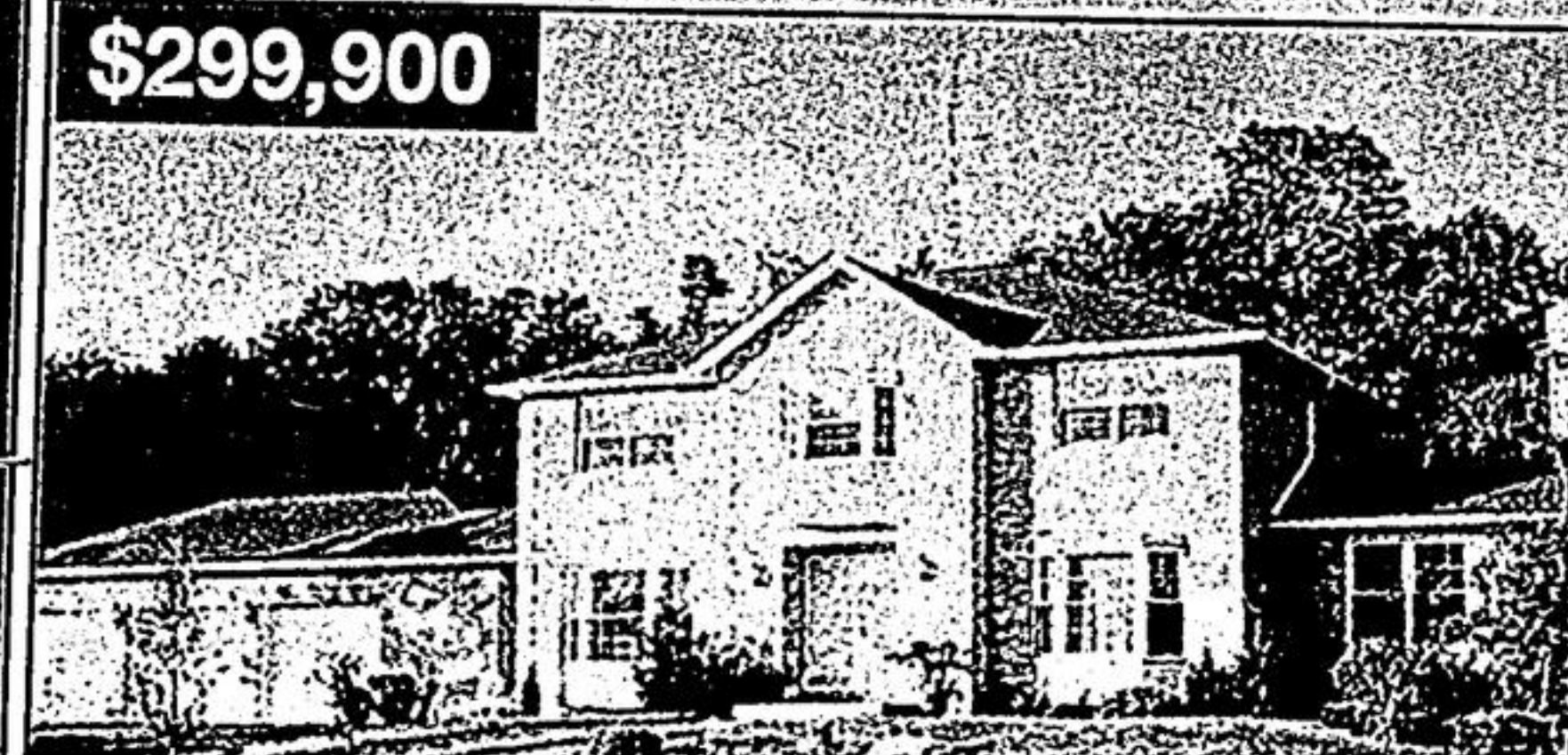


Call: THORA McLOUGHLIN* (905) 649-2231

GINGERBREAD TRIM CENTURY ON 6 ACRES
In the growing town of Sunderland, just north of Uxbridge. 4 bdrms., large country kitchen. Big barn. Move in condition. Don't miss this one.

Family Realty
(905) 852-9781
(905) 649-2231

\$299,900



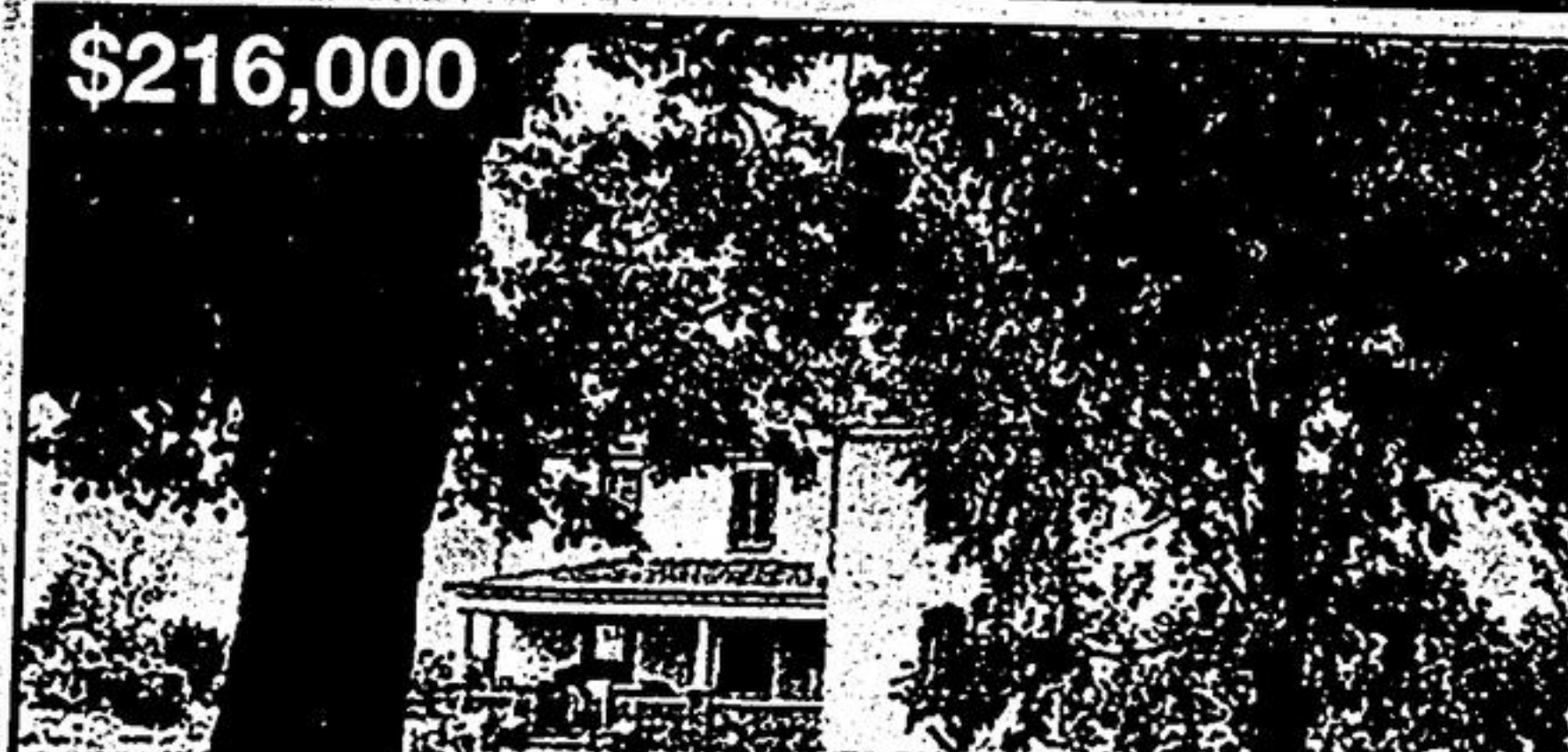
Call: MARY MARIANO* (416) 633-6666

BLOOMINGTON & WOODBINE

Super opportunity, approximately 3300 sq. ft., main floor family room & den. 3+ garages on approximately 1 acre of land. Minutes to 404. Move in condition.

HomeLife
5 Star Realty Ltd.
845 Wilson Ave.
Downsview
(416) 633-6666

\$216,000



Call: SINIKKA FITZGERALD* (905) 852-9781

ANTIQUE HOME ON 87 ACRES
Diamond in the rough, looking for antique home restorer. Circa 1900 farmhouse with all period woodwork in tact. Good solid 4 bdrm home with full bsmt. Approx. 20 ac. of excellent workable land & forest. Small barn with hydro. North Uxbridge.

Family Realty
(905) 852-9781
(905) 649-2231

To Participate in the Next
"Best Homes - Out of Town"
on November 27
please call

Joan Marshman - 640-2100

Bonnie Rondeau - 852-9741

John MacRae - 294-2200