

Auto Express

Jaguar

REPAIR SPECIALIST

172 BULLOCK DRIVE UNIT 31
MARKHAM
471-8660

The Tribune

Stouffville Weekender

The Best Choice is Now!

TERM	MORTGAGE	GIC RSP
1	7.25	6.25
3	7.75	6.75
5	8.25	7.125

Rates subject to change

GIC'S • RRSP'S • MUTUAL FUNDS • LIFE INSURANCE • ANNUITIES • RESP'S • TAX PREPARATION • MORTGAGES

137 Main St. N. #200
Markham • 471-2311

Vol. 11 No. 42 A Metroland Community Newspaper Saturday, October 21, 1995 66 Pages 50c (17¢ plus GST)

Follow Up

Dunkeld calls for hunting ban

By JOAN RANSBERRY
Staff Reporter

Hunting should be banned in hamlets across Stouffville, a local councillor has suggested.

Ward 4 councillor Cliff Dunkeld said public safety dictates that the powers that be ought to recognize that what was once rural areas is now residential and act accordingly. Hunting should be banned in such areas as Musselman's Lake, Bloomington, Sleepy Hollow, Bethesda and Lemonville, said Dunkeld. "I will be bringing a resolution forward," he said.

Residents of Elm Street are "quite right" to petition the town asking that hunting be stopped in their area, said Dunkeld.

On Nov. 7, Whitchurch-Stouffville council will receive a petition from Elm Street and area

residents asking that hunting be prohibited in their neighborhood.

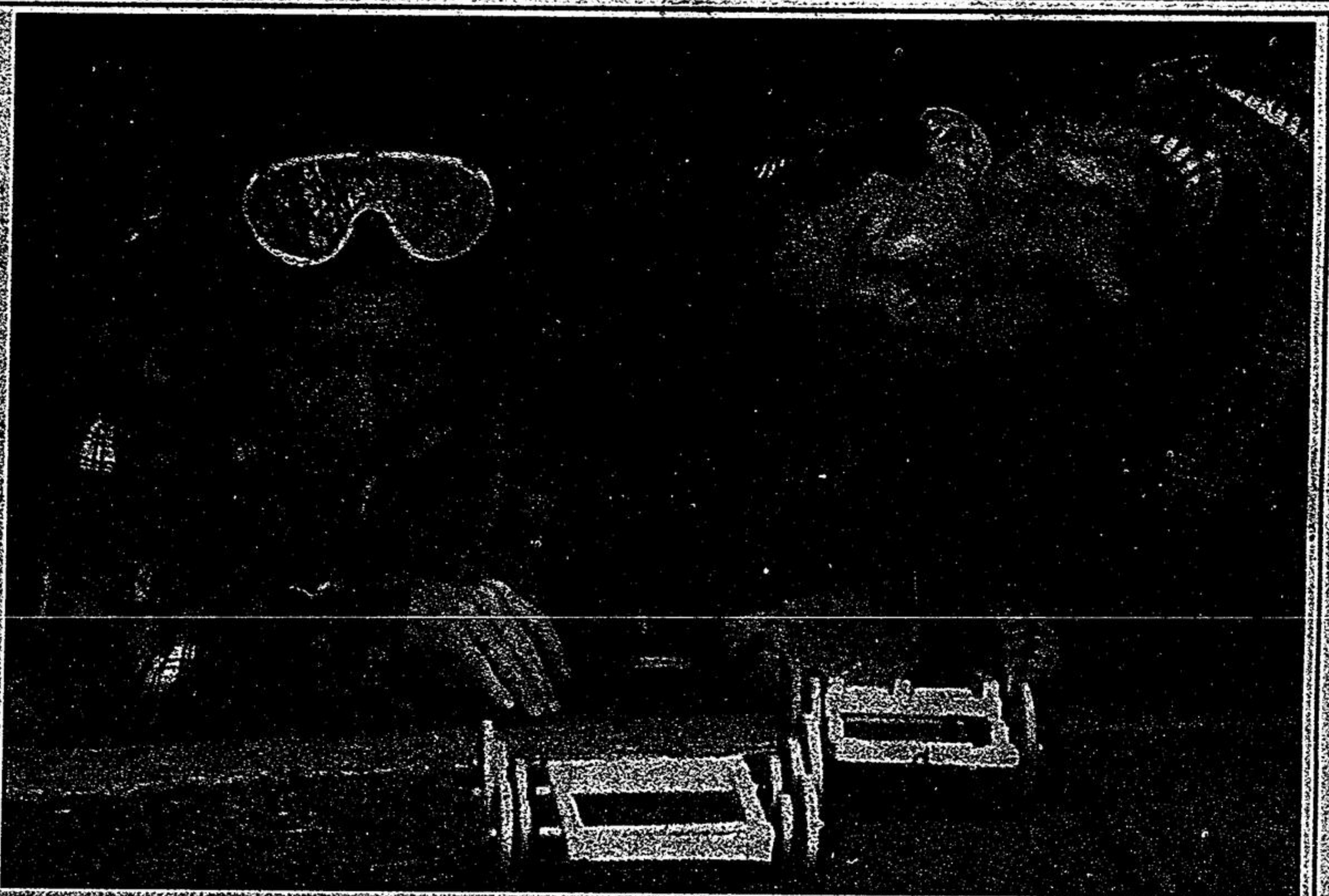
Elm Street resident Kathy Duprey will address council to ask that the law be changed. When Duprey circulates the petition, she's asking her neighbors to show additional support and attend the meeting. "It will take about 15 minutes. It's well worth the effort," said Duprey.

At the meeting, Dunkeld will ask fellow councillors to support a motion to amend the existing bylaw linked to discharging firearms.

The ban should apply to hamlets up as far north as Bloomington," stressed Dunkeld.

Dunkeld won't have any trouble getting the support of one colleague. In fact, Ward 1 coun-

(Please see page 3)



On your marks...

Carley McIlwaine and Sean McArthur prepare to launch their wood vehicles as part of St. Mark's Catholic School's pilot program in cooperation with the York separate school board involving math, science and technology. Students tested their cars on various wheels to see which would travel farthest.

Photo/STEVE SOMERVILLE

Montreal woman killed in Bloomington Road car crash

By JULIE CASPERSEN
Staff Reporter

An elderly Quebec woman was killed in a car crash at a Stouffville intersection Monday at 5:30 p.m.

Dorothy Long, 79, of Montreal, was a passenger in the back seat of a Chrysler Dynasty that collided with a

pick-up truck at Woodbine Avenue and Bloomington Road.

The Dynasty was travelling east on Bloomington and the truck was west-bound and making a left turn onto Woodbine.

Three other passengers in the Dynasty were also hurt. James Long, 77, Jean Long, 66, and Alice Long, 72,

all of Quebec, were treated for non-life threatening injuries at York County Hospital.

The pick-up truck, driven by a 34-year-old Tottenham man, also struck a Nissan that was stopped at the intersection.

Dorothy Long's nephew, Bruce Long, 33, of Lasalle, Quebec, was driving the

Dynasty. He has been charged with running a red light.

Police said all occupants of the Dynasty with the exception of Dorothy Long were wearing seatbelts at the time of the crash.

The investigation is continuing and charges might be laid against the driver of the pick-up truck.

Blue box program may be expanded to include e-waste

Stouffville's Blue Box program will be expanded to include e-waste, according to a report released by the town.

The report deals with collecting clean electrical appliances such as refrigerators, freezers, air conditioners, and washers. It also covers e-waste, including computers, monitors, and printers.

The program is currently run by the town's waste management department. The report suggests that the program be expanded to include e-waste, which is becoming a significant portion of household waste.

The town is currently accepting e-waste at the waste transfer station. The report suggests that the program be expanded to include e-waste, which is becoming a significant portion of household waste.

McARTHUR'S FORD 1995 BLOW-OUT SALE

1995 EXPLORER XLT 4dr. 4X4



BUY FOR **\$31,388** or **'499** mth. "PLAN IT" 24 mths.

1995 F-150 ENFORCER



BUY FOR **\$13,988** or **'199** mth. "PLAN IT" 24 mths.

Choose from **4.9% NO LIMIT FINANCING** or **CASH REBATES up to \$1500** on 1995 Ranger, Villager, Explorer, Windstar, Aerostar and F-Series.

McARTHUR'S
Kennedy Rd. Just South of Hwy. #7
474-1350

FORD

All purchase prices are plus freight and taxes with rebate applied to dealer. Low rate 4.9% finance offers and cash rebates are not combinable. "Plan It" pricing is with \$3000.00 cash down on Explorer and \$2500.00 cash down on F-150 plus freight and all fees. OAC, Government Admin values and mileage restrictions apply. See dealer for details.