

SAAB  
REPAIR SPECIALIST  
172 BULLOCK DRIVE UNIT 31  
MARKHAM  
471-8660

# The Tribune

Stouffville Weekender

The Best Choice is None

TERM	MORTGAGE	GIC RSP
1	7.625	6.50
3	8.125	7.125
5	8.45	7.65

Rates subject to change

GIC'S • RRSP'S • MUTUAL FUNDS • LIFE INSURANCE • ANNUITIES • RRIF'S • TAX PREPARATION • MORTGAGES  
137 Main St. Markham 471-2311

Vol. 11 No. 35 A Metroland Community Newspaper Saturday, September 2, 1995 36 Pages 50¢ (incl. GST)

## Largest pot crop in York Region found in Stouffville

The largest crop of marijuana uncovered in an air sweep of York Region was found in Whitchurch-Stouffville.

Approximately 1,000 pot plants were spotted in a field on the Stouffville side of Regional Road 30 during a helicopter

sweep of the entire region.

"The biggest crop we found this year" was in Stouffville, said Det. Sgt. Greg Saunders of the morality unit.

In total, police discovered more than 1,600 plants in Stouffville, King,

Vaughan and Georgina during the two-day hunt last Thursday and Friday. The street value of the plants seized have a street value of \$1.4 million.

Nine people, including three local men, face drug-related charges.

Kevin Stoner, 27, Chris Weidmark, 42, and Daniel Bangay, 27, all of 11290 Regional Road 30 have been charged with cultivation of marijuana and possession of a narcotic for the purpose of trafficking.

## Munro states position on GTA plans

By JOAN RANSBERRY  
Staff Reporter

The idea of "Toronto-based solutions to rural areas" will not get the backing of a newly elected MPP.

Julia Munro, MPP for Durham York, said that when the present government finally wrestles with how the Greater Toronto Area (GTA) will look in the future, she'll be close at hand looking out for Stouffville and Uxbridge.

Munro said the job ahead is difficult because previous provincial governments "alienated" rural communities with a decision-making process that appeared to benefit the urban sections of the GTA and failed to adequately reflect the reality of our small municipalities.

When announcing the GTA study, the previous government focused on urban issues and failed to address the needs of the rural portion of Durham and York.

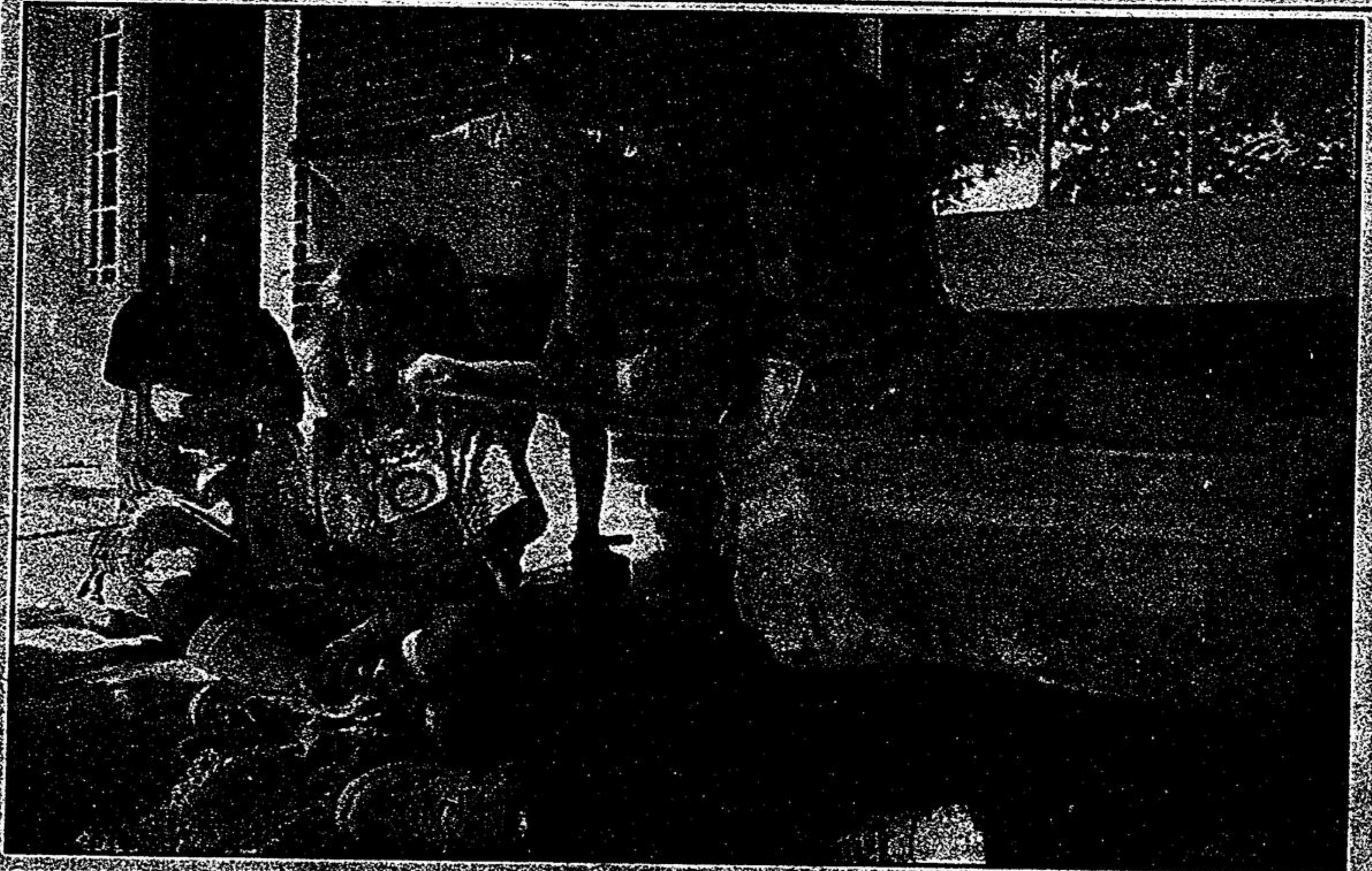
"This attitude must change," said Munro. "Rather than government formulating Toronto-based solution to the problems of rural areas, it must recognize that small towns have concerns and issues that are distinct from those of larger

urban regions, especially in the areas of planning, resource development and the environment."

Two weeks ago, Munro and other local government officials, including York chairman Eldred King, Durham chairman Gary Herrema, Stouffville mayor Wayne Emmerson and Uxbridge mayor Gerri Lynn O'Connor were taken aback when a provincial government task force set up to study the GTA, received a Metro-authored 26-page report.

If the plan is adopted, half

(Please see page 3)



### Crafty kids

From left, Dan Crawford, Ceri Davies, Graziano Volpe (standing) and Heather Orchard cut up rags to make rugs at the Whitchurch-Stouffville Museum's summer program for kids last week.

Photo: SJOERD WITTEVEEN

### Survey says

## Parents prefer full-day Kindergarten

By JULIE CASPERSEN  
Staff Reporter

The majority of parents believe that full-day Kindergarten classes have not damaged their children's attitude toward school, according to a school board survey.

The York Region Roman Catholic Separate School Board launched the full-day, alternate-day program in the

Junior and Senior Kindergarten classes at 20 of its 58 elementary schools last fall. Included in this change was Stouffville's only Catholic elementary school, St. Mark.

The main thrust was to save the price of noon-hour busing by having the children in school all day, every other day.

According to a survey conducted by independent researchers, 93 per cent of par-

ents believe the full-day program improves children's social and emotional development. And 89 per cent of the respondents said they noticed an improvement in their children's oral and literacy skills.

Barbara Bodkin, superintendent of education, said the change wasn't popular with parents initially. However, she said, the survey showed that 61 per cent of respon-

dents reported that the children adjusted to the full-day format "immediately or within the first month."

And, a mere 17 per cent of parents would choose to keep to the half-day model, Bodkin said.

One of the problems reported by parents was the development of a routine. With long weekends combined with a

(Please see page 3)

SALE FROM \$12,999\*  
UP TO \$20,000

Novac Mazda  
294-1210  
5396 Highway 7, Markham