

Calendar

LATCHAM GALLERY FUNDRAISING COMMITTEE is holding a raffle for an original mixed media painting by Markham artist Barb Collier, valued at \$300. Spring Wild Flowers will be on display in the library/gallery lobby. Tickets are \$2 each or three for \$5 or a book of 10 for \$15 and are available at the gallery or from gallery volunteers.

STOUFFVILLE EATING DISORDERS SUPPORT GROUP meets every Wednesday night at 7:30 p.m. at 13288 McCowan Rd. (south of Bloomington) in Stouffville. Call Frieder Schuemer at 640-4490.

WHITCHURCH STOUFFVILLE MUSEUM is offering several children's programs July 19-21 and Aug.

23-25, consisting of three half-day programs. Participants may choose either morning (9:30 a.m. to noon) or afternoon (1:30 to 4 p.m.) session. Pre-registration required. Cost is \$20 for three days. To register, call the museum at 727-9954 or toll-free at (416) 213-0900 (at the time dial 727-8954).

WHITCHURCH STOUFFVILLE LIBRARY is offering Emergency First Aid For Kids, a two-day babysitter's workshop for 11 to 15 year olds on July 19 and 20 from 1 to 4 p.m. This St. John's Ambulance program teaches the procedure of artificial respiration and how to cope with medical emergencies and injuries. Cost is \$35.

Friday, July 21

CLAREMONT LEGION BRANCH 483 presents free Summertime Fun and Entertainment at 8:30 p.m. This week: Doc Brown and Lip Sync Contest. Everyone over 19 welcome.

Sunday, July 23
HYMN SING at Parkview Village Auditorium at 7 p.m. featuring Jim Thomas. All welcome.

Monday, July 24
5-DAY CLUB will be held at Stouffville Missionary Church from July 24 to 28 from 9:30 to 11:15 a.m. The 5-Day Club is a community Bible club for boys and girls who are entering kindergarten to grade six this September. The program includes lots of games, skits, puppets, action songs and an exciting bible lesson. Cost is \$5 for the week. For more information please call Linda at 640-3911.



Can I keep it dad?

Hans Rauch built this child's playhouse, for someone else, but he'll soon be setting to work on another for his daughter, Ayla's. The Stouffville resident does woodworking and renovations.

Photo: STEVE SOMERVILLE

VILLA BAKERY

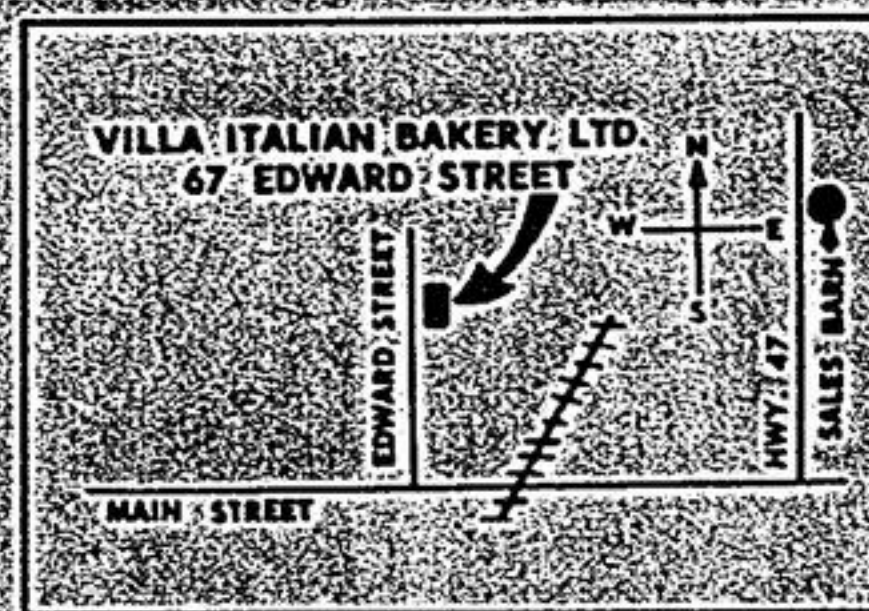
FOOD MARKET



67 Edward St.,
Stouffville
640-6112

*Beside the Co-op

Hot
Summer
Savings



SEALTEST ORANGE JUICE FROM CONCENTRATE 2L Carton 99¢	FRESH DAILY LEAN GROUND BEEF 2-18 kg 99¢ lb.	FRESH ONTARIO BROCCOLI ea. 59¢	SILVERWOOD'S STIRRED YOGOURT 3.95 doz. 175 g cup 3 FOR 1.00
GROCERY	GROCERY	GROCERY	GROCERY
KRAFT MIRACLE WHIP LIGHT OR REGULAR 1L jar 2.99	SEALTEST ASSORTED POPSICLES Box of 12 1.99	WISHING WELL SOFT DRINKS ASSORTED VARIETIES 2L bottle 89¢	ENVIRO PLUS GARBAGE BAGS Pkg. of 10 88¢
SMART CHOICE POTATO CHIPS ASSORTED VARIETIES 180 gram bag 88¢	FOOD CITY COOKIES ASSORTED VARIETIES 400 g pkg. 1.49	MEADOWGOLD ICE CREAM ASSORTED VARIETIES 2-L brick 1.49	SKIPPY PEANUT BUTTER SMOOTH OR CHUNKY 1 kg. jar 2.89
SUCCESS PIECES AND STEMS MUSHROOMS 284 mL tin 88¢	JAFFA SQUEEZE FROZEN ORANGE JUICE FROM CONCENTRATE tin 69¢	OLD EL PASO NACHIPS ROUNDS OR TRIANGLES 400 g bag 2.29	LAFAMOUS SALSA ASSORTED VARIETIES 340 mL jar 99¢
MEAT	MEAT	MEAT	MEAT
MAPLE LEAF WIENERS 450 g pkg. 1.79	MAPLE LEAF BACON 500 g pkg. 1.99	BEEF OR PORK SHISH KABOBS each 1.99	SIRLOIN STEAKS OR ROASTS 6.59 kg. 2.99 lb.
PRODUCE	PRODUCE	PRODUCE	PRODUCE
FRESH CUT WATERMELON .64 kg. 29¢ lb.	Product of U.S.A. #1 Grade TOMATOES 1.52 kg. .69 lb.	HEAD LETTUCE ea. .49	Large PEACHES 1.96 kg. .89 lb.
DELI COUNTER	DELI COUNTER	BAKE SHOP	BAKE SHOP
MAPLE LEAF SALAMI .37* 100 g 1.69 lb.	SCHNIEDERS BOLOGNA .77* 100 g 3.49 lb.	RAISIN BREAD 454 g loaf 1.69 each	CRUSTY BUNS ROUND OR LONG 4 FOR 1.00

Prices in effect Wednesday, July 19, 1995 until closing Saturday, July 29, 1995. We reserve the right to limit quantities while supplies last.

It's time again for our
PASTA FESTIVAL
July 20, 21, 22
Your favourite pasta made in front of you, salads, bread.
All you can eat \$10⁹⁵
*Winner of Lifestyle Approved Award

Amaretto RESTAURANT
FINE ITALIAN DINING
67 Edward Street, Stouffville
642-6524

Lunch time Pasta Bar
\$5.95

Weekdays 11 a.m. - 2 p.m.

BANQUET HALL AND CATERING AVAILABLE