

150th ANNIVERSARY

Melville United Church Celebrates
on
June 4th, 1995

11:00 am Very Rev. Dr. S.C. Lee - Guest Preacher
Dr. Gordon Hunter will read Scripture Lessons
12:15 pm Social Time - All welcome
MELVILLE UNITED CHURCH - JUST NORTH OF ELGIN MILLS RD. ON KENNEDY RD.

Come to Church

Gormley's Parklane Model Gardens
ideal setting to display artist's work

A beautiful garden is a work of art and, for artist Maryanne Cain, it is also the ideal setting for her pieces, which are designed specifically for display in the garden.

Between June 13 and July 6, an exhibition of Cain's works will be shown at Parklane Model Gardens in Gormley.

"I have been increasingly involved with gardens," said the artist.

"I love watching plants grow and develop in my garden; the ever promising cycle of yearly renewal. As this interest has grown, so has its connection to my art. The work in this exhibition was created with gardens in mind, exploring themes of timelessness, stability and mystery."

Cain studied design at Ryerson Polytechnical Institute before going on to study ceramics at Alfred State College in New York State and George Brown College in Toronto.

She has been featured in many group and juried shows as well as

solo exhibitions in the United States and Canada.

In 1990, she was a featured artist in The Latcham Gallery's show "Gardens in Mind."

Her other credentials include Artist in Residence at Harbourfront, Artpark in Lewiston, N.Y. and the Banff Centre of Fine Arts.

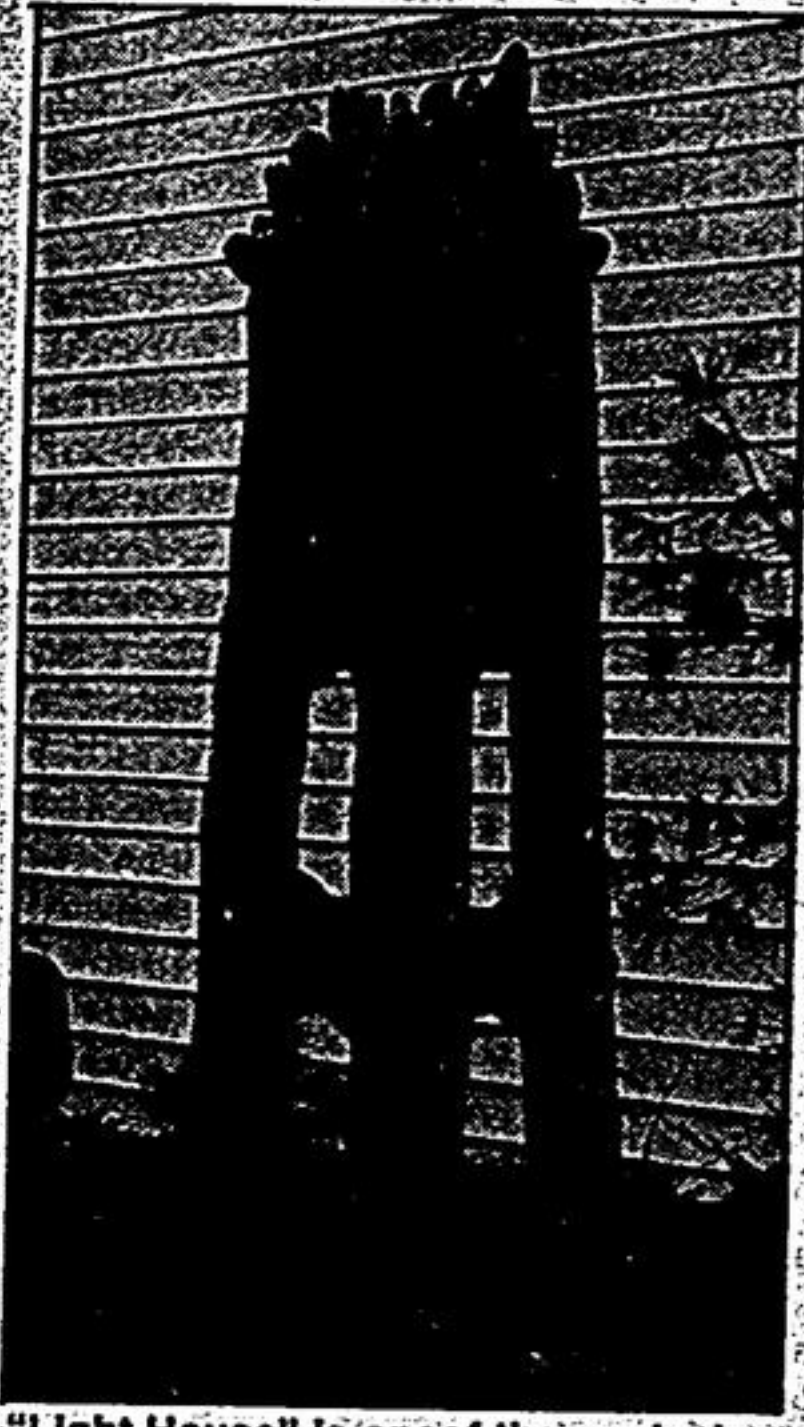
"It is with much enthusiasm that I collaborate with Parklane," said Cain.

"They have created beautiful gardens with sensitivity not only to plants and garden structures, but also to defining distinctive and unusual spaces. I feel that our works are strongly complementary."

Parklane Model Gardens are located on the north side of Stouffville Road, half a mile east of Highway 404.

They are open to the public Monday to Friday from 10 a.m. to 6 p.m. and weekends and holidays from 11 a.m. to 5 p.m.

Admission is free.



"Light House" is one of the works by artist Maryanne Cain.

THE ANGLICAN PARISH of CHRIST CHURCH
254 Sunset Blvd., Stouffville
The Rev. Robert A. Shields
640-1461

SUNDAY, JUNE 4th
The Day of Pentecost
8:00 a.m. - Holy Communion
10:00 a.m. - Choral Eucharist with Sunday School and Nursery
Wednesday, June 7th
10:00 a.m. - Senior's Service

SPRINGVALE BAPTIST CHURCH
Gormley - Stouffville Rd. at Kennedy Rd.
Pastor Rev. Bob Flemming
Associate Pastor Rev. Byron Stewart
887-5651

SUNDAY, JUNE 4th
9:45 a.m. - Bible School
11:00 a.m. - Morning Worship - Mr. Mark Middleton - Emmanuel International
6:00 p.m. - Richard Flemming - Missionary on furlough from France
TUESDAY
7:30 p.m. - College & Careers
WEDNESDAY
7:00 p.m. - Adult Bible Study & Prayer
For more info. call Church Office 887-5651
Come, Worship With Us

BLOOMINGTON GOSPEL CHURCH
13660 Ninth Line
(South of Bloomington Rd.)
Rev. Bryan Coker 640-4364

SUNDAY, JUNE 4th, 1995
9:45 a.m. - Sunday School
11:00 a.m. - Worship Service
6:30 p.m. - Evening Service
ALL WELCOME

WIDEMAN MENNONITE CHURCH
10530 Hwy. 48 - North of Major Mackenzie
Phone: 640-6219
Pastor Lawrence Burkholder 294-0649

SUNDAY, JUNE 4th
9:45 a.m. - Sunday School
10:45 a.m. - Morning Worship
Elwood McLean
7:00 p.m. - The Rockway Collegiate Choir from Kitchener
Everyone Welcome

STOUFFVILLE UNITED CHURCH
34 Church St. N.
640-1163
Rev. Wayne Reed

SUNDAY, JUNE 4th, 1995
10:30 a.m. Morning Worship
Sunday School from Baby Fold to the grade 8 level
Everyone Welcome

ST. MARK'S CATHOLIC CHURCH
345 GLAD PARK AVE.
STOUFFVILLE
640-6665

MASS SCHEDULE
Saturday 5:00 p.m.
Sunday 9:00 a.m. and 11:00
Weekdays: Mon., Wed. & Fri. 7:30 p.m.

STOUFFVILLE BAPTIST CHURCH
A Fellowship Church
6273 Main Street
Pastor - Rev. Gordon Bickle

SUNDAY, JUNE 4th
Bible class for all ages - 9:45 a.m.
11:00 a.m. - Morning Worship
GUEST SPEAKER
Rev. Doug Freeman
Toronto Jewish Mission
Communion
WEDNESDAY
Prayer & Bible Study - 7:30 p.m.
Life's Biggest Decision is What You Do With Jesus.
Join us for Worship

VIVIAN BAPTIST CHURCH
473-3543
On Hwy. 48 at Vivian Rd.
Pastor Robert Okum
Holding forth the doctrines of grace

9:45 a.m. - Sunday School
11:00 a.m. - Morning Worship
7:00 p.m. - Evening Service
Everyone is Welcome

Tee Off For Success set for June 6

The town's Economic Development Advisory Committee (EDAC) is combining with the Whitchurch-Stouffville Chamber of Commerce to hold a Tee Off For Success golf tournament June 6 at the Sleepy Hollow Golf and Country Club.

The scramble format gets underway at 1 p.m. with a steak dinner and fashion show of men and ladies golf attire to follow.

A guest speaker from radio station 103.5 FM will deliver a talk entitled Marketing Strategies for the '90s.

The dinner will also include the awarding of prizes, with categories including longest drive, closest to the pin and best team score.

Cost is \$95 per player, \$360 for a team of four. Dinner only costs \$30. The fee includes golf, cart, club house facilities and dinner.

For ticket information, please contact Peter Arnot at the recreation office at 640-6527, ext. 26.

Merlin Dewing at the town office at 640-1900 or the Chamber of Commerce office at 642-4227.

Local man new VP of Ontario farm equipment dealers' group



DON RICHARDS

At the 49th annual meeting and convention of the Ontario Retail Farm Equipment Dealers' Association (ORFEDA), Don Richards of Chas. Richards & Sons Ltd., Stouffville, was elected second vice president for 1995.

ORFEDA is a non-profit voluntary provincial association founded in 1945. It is the recognized voice of

equipment dealers, making presentations to the provincial and federal governments, supplying trade publications, regular dealer bulletins, conducting training seminars, insurance counselling and legal representation to its members.

ORFEDA is selling, installing and servicing dealer in-house computer systems. It also operates the Outdoor Power Equipment Association (OPEA) and has an active farmstead division. ORFEDA is affiliated with the Canadian and North American Equipment Dealers' Association.

Caribbean night promises a hot time for all

It may be rainy and cool outside, but a warm, sunny atmosphere is guaranteed in the new auditorium at the Stouffville Country Market on Saturday, June 10.

That's when Christ Church Stouffville hosts its second annual Caribbean Evening which will include a steel band, a delectable dinner, performances by flaming limbo dancers and youth and cultural presentations. The talented band, Pantastix, has toured internationally, said John Hall, who is on the committee organizing the event.

"We're having flaming limbo dancing and we hope to have audience participation. We also have a group, Banja, from Barbados and they will be doing some cultural songs and folk songs."

The sit-down dinner will feature

Caribbean food from Nicey's Take-Out in Scarborough, a favorite haunt of the West Indian community, and the menu items will be gently spiced rather than hot, said Hall.

"The emphasis is on entertainment and the bringing together of the community. We believe this sort of event will enhance relationships and tolerance between cultures," said committee member Franchot Franklin.

Everyone will be invited to dance to the lively music of the steel band, as well as some captivating calypso and the funky beat of reggae.

Tickets are \$20 each, \$36 per couple and \$9 for children and are available by calling 640-1461.

Doors open at 6:30 p.m., the program begins at 7 p.m. and there

will be door prizes and a cash bar. Flyers are being distributed by committee members, and the Country Market and the organizing committee are grateful for the support of many local businesses which helped to make the event possible.

Book sale a big success

The Whitchurch-Stouffville Library book sale was a resounding success.

The annual three-day sale netted more than \$4,000 this year, library CAO Marilyn Ferguson said. The library still has some books for sale in the lobby.

Announcing
TIM HORTONS
New Smoke-Free Location



For added customer enjoyment of both our Tim Horton products and our in-store atmosphere, the Stouffville Tim Hortons will be designated smoke-free as of June 5, 1995

Tim Hortons

Good Value Auto Insurance

You are well protected with The Co-operators if you ever have a claim on your auto insurance. As the largest wholly Canadian-owned, multi-line insurer, we offer a wide range of insurance products and financial services, with offices conveniently located in communities all across Canada.

Larry Irwin
Sales Representative
6245 Main Street
Stouffville, Ontario
L4A 4J3
Bus: (905) 640-2586
Fax: (905) 640-6995

Good Value From People You Can Trust
the co-operators
Insurance/Financial Services
LIFE • RRSPs • HOME • AUTO
FARM • BUSINESS • GROUP



Canada Cord ceremony

Stouffville Girl Guides, Julie Gribbon, 14, left, and Colette Izzo, 14, received roses along with their hard-earned Canada Cords.

Bev Doolittle
Two More Indian Horses

Where There Are Two Sides to the Story
A limited edition fine art print in three panels, each 12" x 12" (detail of one panel shown). 48,000 signed by the artist and numbered.
Prepublication price, if ordered by June 30, 1995: CDN \$500. Publication price, if ordered beginning July 1, 1995: CDN \$560.
See the full advertisement in front of you (and behind you as well) here at your authorized Greenwitch Workshop dealer. Please call or visit us for more information.

GOLDEN EAGLE ART GALLERIES INC.
The most complete Gallery for all your art needs
18 Ringwood Drive, Stouffville
Tel. & Fax:
(905) 642-2279



Bus. Hours
Monday - Thursday - 10:00 a.m. - 6:00 p.m.
Friday - Late Night - 10:00 a.m. - 8:00 p.m.
Saturday - 10:00 a.m. - 5:30 p.m.