

# Spring Home and Garden

## PAINT COLOURS UNLIMITED

9078 LESLIE ST., UNIT 7

**NEW  
BEAVER  
CREEK  
LOCATION**

**GRAND  
OPENING  
PAINT  
SALE**

Wholesale Commercial/Residential Pricing

**PARA**  
PAINTS

Custom Paint/Stain Matching

Free Consultation

Metallic and  
Pearlescent Glazes

Faux Finishes

Benjamin  
**Moore**  
PAINTS

**UPTOWN**

9078 Leslie St., Unit 7  
Richmond Hill

**(905) 707-5500**

**DOWNTOWN**

502 Adelaide St. W.  
Toronto

**(416) 703-5500**

Bathurst St.	Adelaide St.	Portland Ave.
King St.		

*"There is no colour  
we can't match"*

West Wilmot	Leslie St.	Hwy. 404
Hwy. 7		

## Get yourself into some hot water - choose a spa to enhance rest and relaxation

There are plenty of reasons - healthy reasons - to soak in a spa or hot tub. Many like the way a good hot water soak increases circulation and loosens up tense muscles after a workout or a hard day at work. If you have decided that getting yourself into hot water is the way to go and are now seeking the right spa then here is some information for you when it comes to making your selection.

There are a number of manufacturers in the market that produce prefabricated spas of acrylic or other durable thermoplastic materials. These prefabricated units come in a variety of shapes, sizes, colors and configurations. Your consideration should be for the number of people that will be using the spa, what your restrictions are for physically getting the spa inside the home if required and how you plan to use the spa.

The most popular sizes of spas will accommodate four to six people, but small models for two people and larger models that will squeeze seven to 10 people into the scene are also available. Shapes include rounds, squares, rectangles and octagons with body moulded seats and recliners. A wide variety of solid colors or marbles can match any decor or setting.

Working features include large and small jets that are strategically placed to provide the greatest massage. Blowers for additional air injection, two and sometimes three pump systems that drive the therapy jets, timers, larger sized heaters and a variety of control features can also be considered in the package.

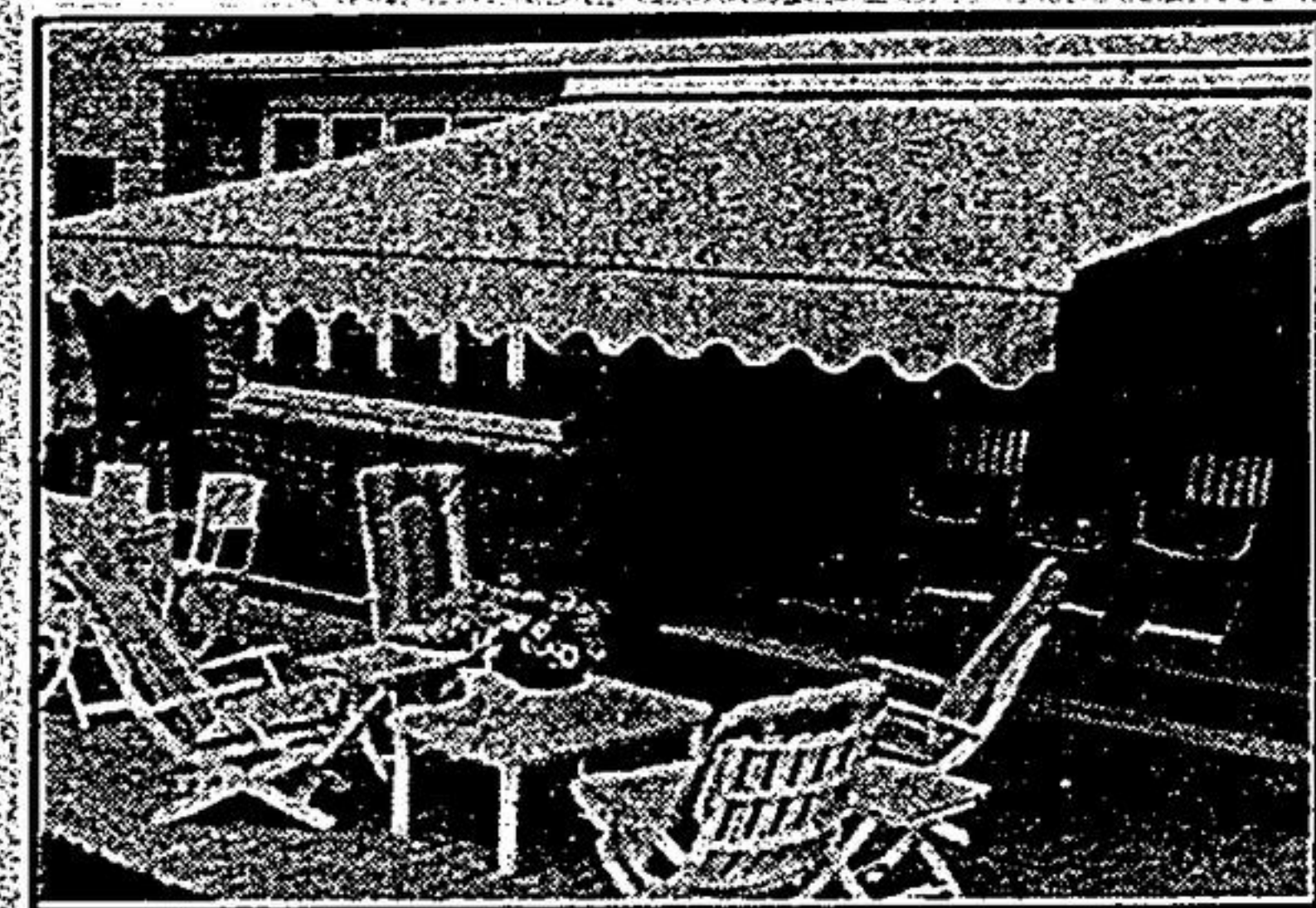
Concrete spas can be custom designed to the customer's requirements and

landscaped into the most attractive settings. Most of the options of the prefabricated spas are also available in concrete models.

The best way to select your spa model is to visit the showroom of a spa retailer and actually sit in the various dry floor models. This will give you a feel for size, comfort and the functions of the jets. Talk to the spa salesman about the features and determine the warranty limitations.

Having as much information as possible on the product will take the desperation out of purchasing a spa and will help you make the sensible choice in models.

## SELF STORING FABRIC RETRACTABLE AWNINGS



## PROTECT YOURSELF FROM HARMFUL ULTRA-VIOLET RAYS

TEFLON COATED FABRIC

• 5 Year Warranty • Custom Made Sizes • Self Storing • Self Supporting Retractable Fabric Awnings • Markilux Fabric (Draylon Poly Acrylic Fibre) • Block Out Ultra Violet Rays and 77% Of The Sun's Direct Heat.

**JOHN BOUWMEISTER CONT. LTD.**

EXPERTS  
IN  
HOME  
IMPROVEMENTS

**294-1798**

Serving the Community  
for Over 25 Years

METRO LIC. #85-3351

SHOP  
AT  
HOME  
SERVICE

**FREE  
SHOP**

AT HOME SERVICE

**FREE ESTIMATES**

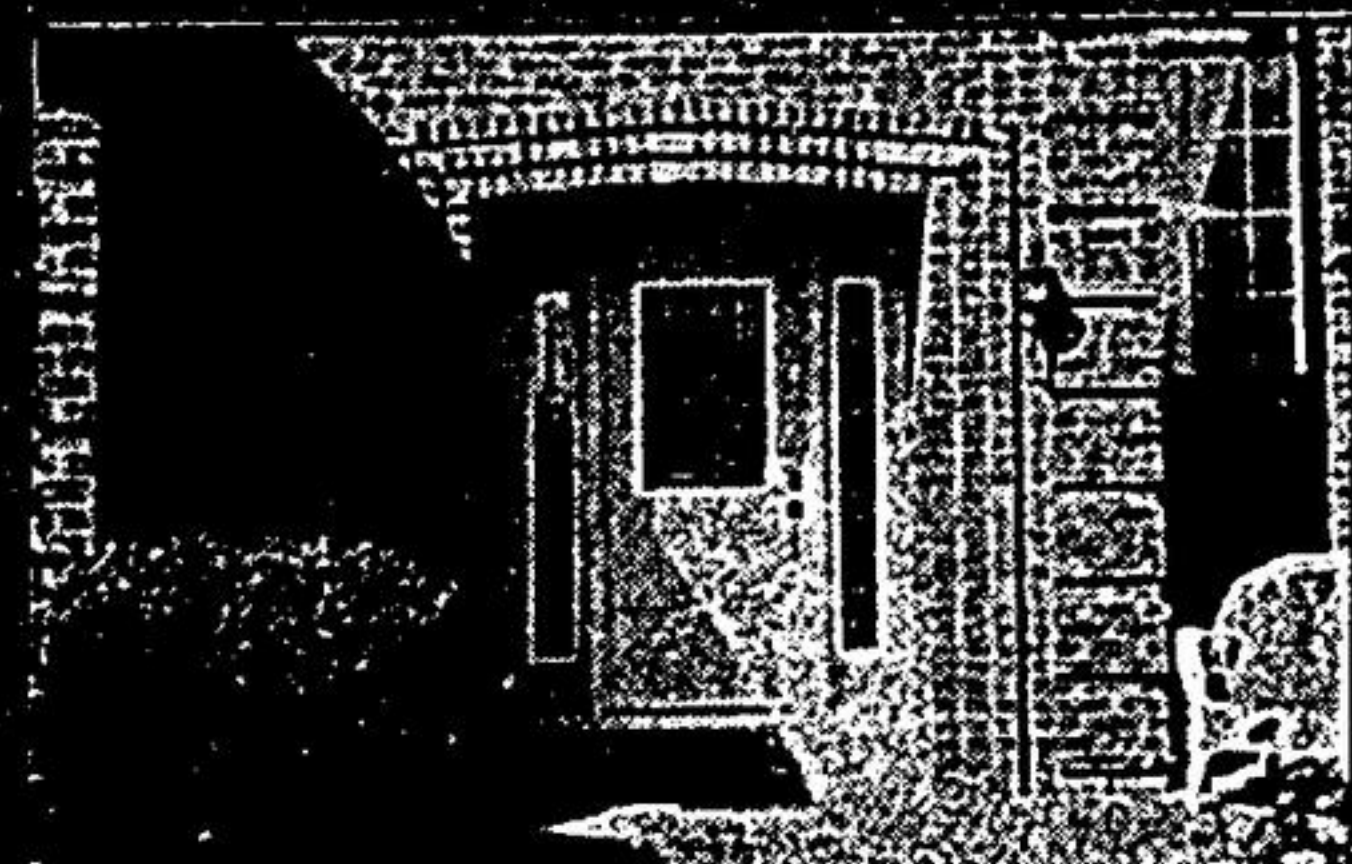
DROP IN AND VISIT  
OUR NEW  
SHOWROOM



**20% OFF WINDOWS  
& DOORS**

ALL PROFESSIONALLY INSTALLED.  
OFFER EXPIRES JUNE 30/95

COMPLETE LINE OF CARPET, HARDWOOD FLOOR, CERAMIC, MARBLE



SHOWROOM

501 Passmore Ave.

Unit #9

Scarborough, Ont.

1. McNicoll Ave. #200

501 Passmore Ave. Unit #9

1. Steel St. #10

Hwy. #7

Call for appointment

Joe (416) 293-6677

## DRIVEWAY SEALING BY BLIZZARD

Government Certified  
Environmentally  
Friendly Products

For a **FREE** Estimate for  
your Paved Driveway  
**10% OFF** until May 31st

**CALL (905) 470-6616**

## INTERLOCK



WAVY  
WALKS?  
DIPPY  
DRIVE?

REPAIRS  
BY  
SENTRY



**905-294-3791**