

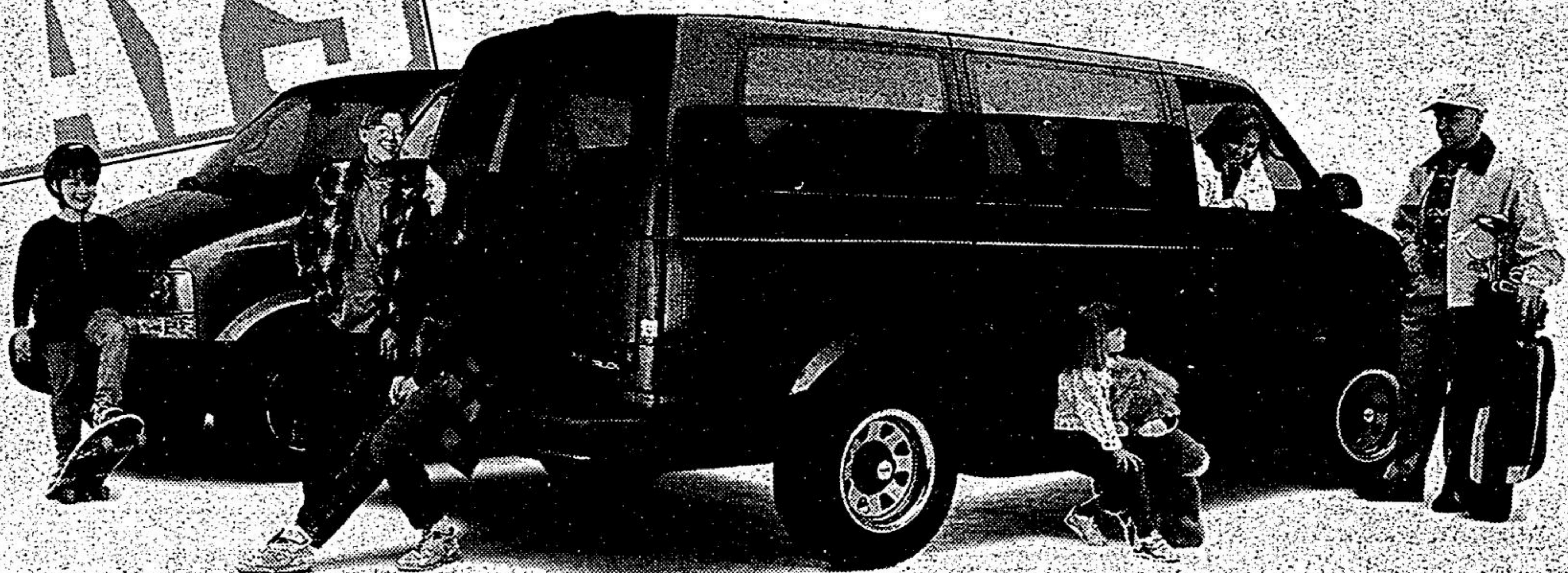
# CHEVY ASTRO & GMC SAFARI



**WAN  
DEALING  
DAYS**

*Extra Edition*

**BEST VAN  
DEALS  
OF THE  
YEAR!**



**FULLY EQUIPPED WITH ALL THE EXTRAS  
INCLUDING \$750 RUNNING BOARDS  
AT NO EXTRA CHARGE.**

## ASTRO & SAFARI EXTENDED VAN *Extra* PACKAGE

YOU GET ALL THIS

**EXTENDED VANS FEATURE:**

- ✓ no-charge running boards
- ✓ eight passenger seating, most standard seating in class
- ✓ most towing capacity in class
- ✓ 190 HP 4.3 litre engine, most standard V6 power in class
- ✓ 4-wheel anti-lock brakes

**LIMITED TIME OFFER!**

**GM CARDHOLDERS.**  
Don't forget to use your GM Card earnings toward the purchase of any GM vehicle!

**SMARTLEASE.**  
Smart customers use SmartLease. Talk to us about custom-designing a lease plan to fit your specific needs. You can pay zero down, lower your monthly payments or use your trade-in. We can tailor your lease any way you want.

**FOR THIS  
SPECIAL LEASE  
PRICE DURING  
THIS EVENT**

**\$268\***

PER MONTH OVER 36 MONTHS

- ✓ air conditioning
- ✓ tinted glass
- ✓ 4-speed electronic transmission
- ✓ captain's chairs
- ✓ cruise control
- ✓ intermittent wipers
- ✓ 24-hour Roadside Assistance
- ✓ GM 3-year/60,000 km no-deductible TOTAL™ Warranty

**CHEVY & GMC  
YOUR ONE STOP  
VAN SHOP**



\*Based on a 36 month lease for vehicle equipped as described. A minimum downpayment of \$2809 and \$325 security deposit are required. Some mileage conditions apply. Freight (\$820), license, insurance and taxes not included. Dealer order or trade may be necessary. Dealer may sell/lease for less. See your Dealer for details. †Subject to GM Card Program Rules. ‡TD and GM are licensed users of marks. †Registered Trade Mark of General Motors Corporation. TD licensed user.