

On Track

Fundraising gives heritage railway boost on projects

By KATE GILDERDALE
Correspondent

Without strong community backing, a tourist railway between Stouffville and Uxbridge would have remained an unattainable dream. On Tuesday, May 16, the Whitchurch-Stouffville Chamber of Commerce and the Stouffville B.I.A. are putting their support firmly behind the York-Durham Heritage Railway Association by hosting a gala dinner at Maples of Ballantrae.

The event is open to everyone in the community and half the ticket price of \$50 will be a direct, tax-deductible donation to the organization.

Others who are helping to make the dream come true

include Maples' owners Shirley and Michael Wade, who have donated the use of their restaurant for the dinner, and acclaimed local artist John Roberts, who has donated a series of sketches of the Stouffville station, which was torn down in 1979.

A number of Roberts' sketches, which he completed 20 years ago, will be available for purchase at the dinner and all proceeds from their sale will be donated to the railway.

Hazel McCallion, mayor of Mississauga and an immensely entertaining speaker, will be the special guest at the gala.

Among the projects planned as a result of these and other fundraising events is the rebuilding of a replica of the

demolished station, said YDHRA treasurer Eric But-ton. In the meantime, he added, "we now have a second passenger car and we have purchased a baggage car. We hope these will be moved to Stouffville shortly."

Also due to arrive soon is a second RS-3 road switcher locomotive, the delivery of which has been temporarily delayed because of a recent strike at Ontario Northland. At present, the YDHRA is storing the other RS-3 in Uxbridge, where it is undergoing repairs and maintenance work.

"The gas car has been repaired over the winter and will be ready for track work and the hand cart was fixed up at the (Stouffville) high school."

Tickets for Tuesday's gala dinner, which begins at 6.30 p.m., are available from *The Tribune*, Stouffville Printing and Freckles.

HOME IMPROVEMENTS

Building blocks for strong families.

- May 14—Surviving the Stages of Motherhood
- May 21—The Wingo: Discovering How God Wired Your Family
- May 28—The Walls: Family Survival Kit
- June 11—The Doors: Communication Barriers
- June 18—The furnace: When a Man Loves A Woman

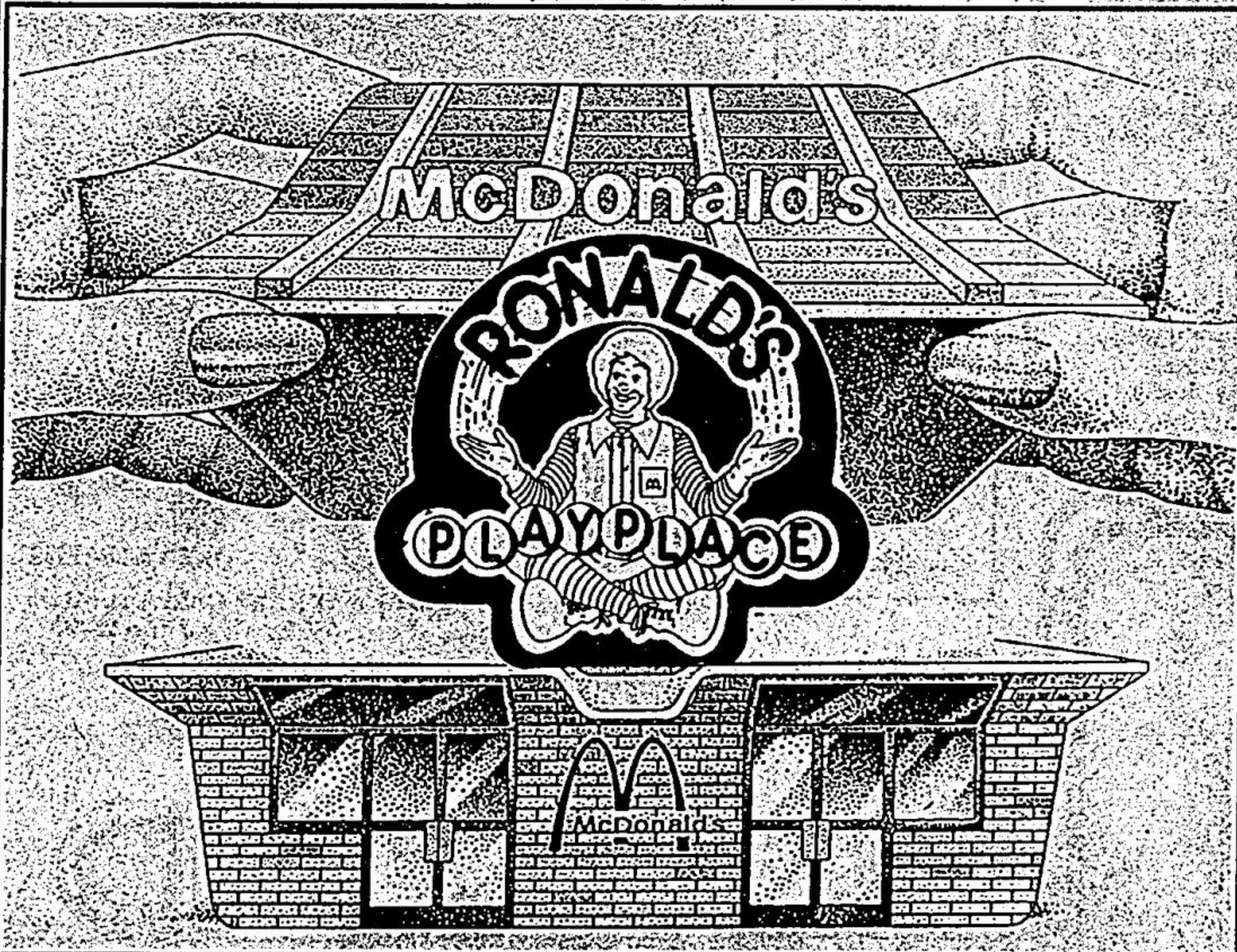
9:30 & 11:15AM
Each Sunday

905
477-1104

Unionville Alliance Church

4898 16th Ave.
On N. side of
16th between
McCowan &
Kennedy

"NOW OPEN"



AT MILLIKEN MILLS

(Kennedy Rd., south of 14th Avenue)

Playplace is a safe, fun environment which houses a Soft Play area, with long curving tube slides and climbers that kids can't get enough of. It's an exciting new place where both you and your child can meet new faces and of course - Great Food.

For information about our
Great Birthday Party Program
Call 905-940-9970

NOW CATERING TO THE UNINHIBITED

WET/DRY SUIT SALE!

Get ready for Spring!

20-35% OFF



LIMITED TIME OFFER!

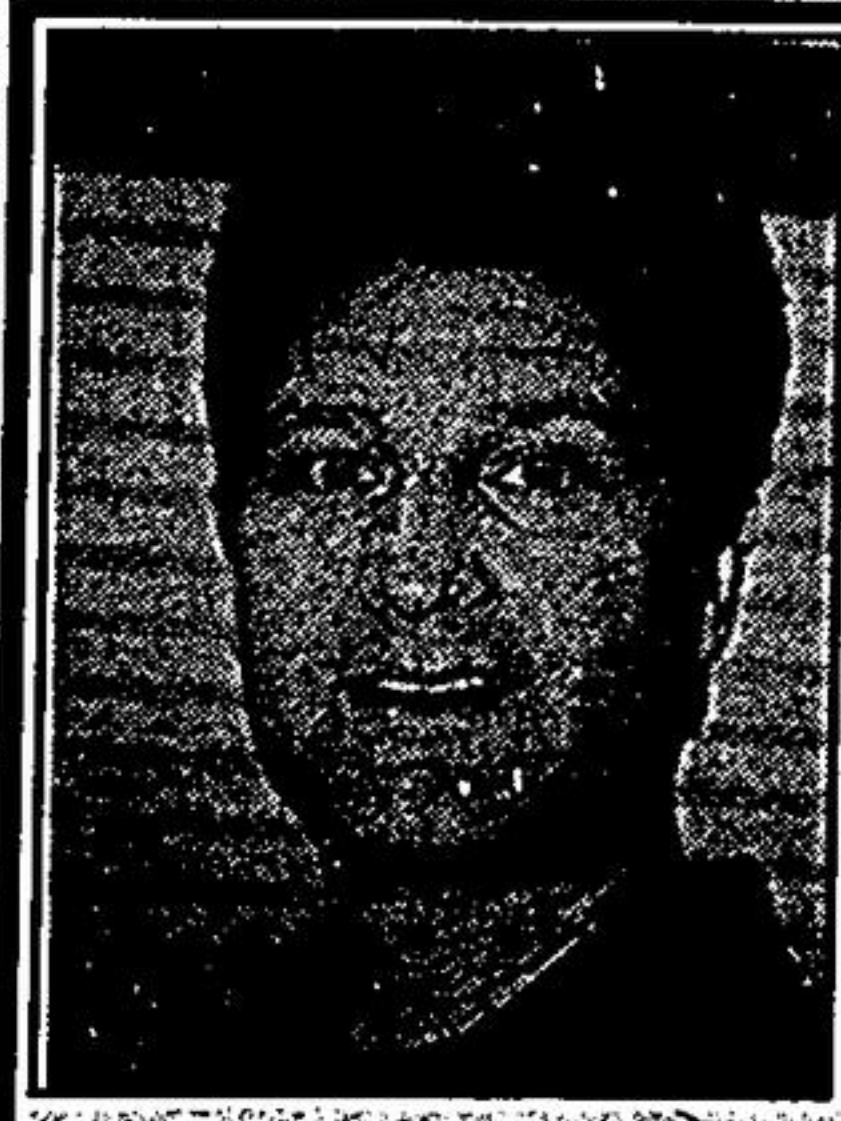
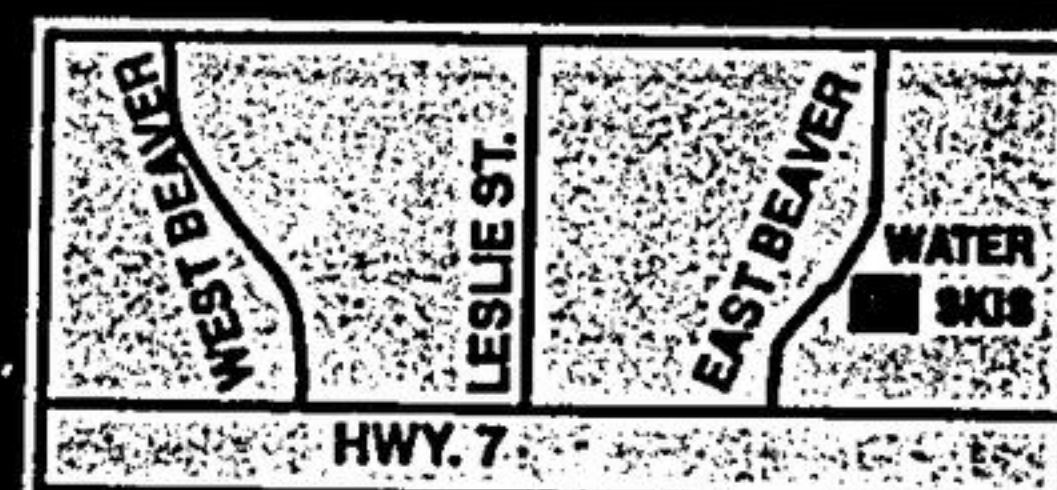
Great Selection!

HOURS

Mon. - Fri. 10-7
Sat. 10-5
Sun. 12-4



Richmond Hill
(Hwy. 7 & 404)
160 East Beaver
Creek Rd., #8
(905) 731-6082
Haliburton & Muskoka



RUSSELL GANZ

20% OFF
COMPLETE SET
OF GLASSES,
CONTACTS
OR SUNGLASSES
(invisible bifocal & ultrathin
lenses included) OR
See Our Value Selection
from **\$59**

GREAT SUNGLASS SELECTION
Serving York Region for over 14 Years

MARKHAM VISION CENTRE

9275 Hwy. 48 UNIT 1B, at 16th Ave. beside Sunkist, MARKHAM
MARKHAM VISION IS LOCALLY OWNED



472-2020

Markham's Finest Collection of Designer Frames

Every Face is like a Piece of Art. It requires the Perfect Frame.

Eye Examinations Arranged



KATHRYN BRITTON