

Stouffville Calendar

AN OFFICE VOLUNTEER for Mondays and the occasional Fridays is needed at the Whitchurch-Stouffville Chamber of Commerce. For more information call 642-4227.

APHASIA CENTRE NEEDS Volunteers in Stouffville and Newmarket to complete life history books made to help adults with speech difficulties to communicate. For more information call 884-3839.

A SEARCH HAS been launched for volunteers to help with casino fundraising event being held by the York Region chapter of the Ontario March of Dimes. The volunteers will be needed this month and next. The casinos are held in York Region once a month. Proceeds are used to purchase mobility equipment for adults and teens with physical disabilities. For more information call Denise at 853-0383.

ARE YOU ADOPTED, a birth relative, an adopted family and interested in a search? Parent Finders Inc. may be able to help. The local chapter meets at the York Regional Police headquarters in Unionville at 8700 McCowan Rd., Admission is free. For more information call Joyce at 640-6280.

SATURDAY, FEB. 4
A GROUP OF Seven Twist will

be featured in a exhibition to begin at the Latham Gallery from noon to 2 p.m. The exhibit presents Brian Hoxha's modern landscapes. Hoxha explores many of the same sights made famous by the Group of Seven. The exhibition continues until Feb. 24. For more information call 640-2395.

MONDAY, FEB. 6
A FOUR-PART series dealing with understanding menopause and midlife issues for women will begin at Christ Anglican Church at 254 Sunset Blvd. from 1:30 to 3:30 p.m. The session will be held for four consecutive Mondays. The session will also take place on Tuesdays, beginning Feb. 7 at Today's Gifts Resource and Wellness Centre at 17705 Leslie St., Unit 11, Newmarket. For more information call 1-800-461-2135. The series is held by the York Region Public Health Department.

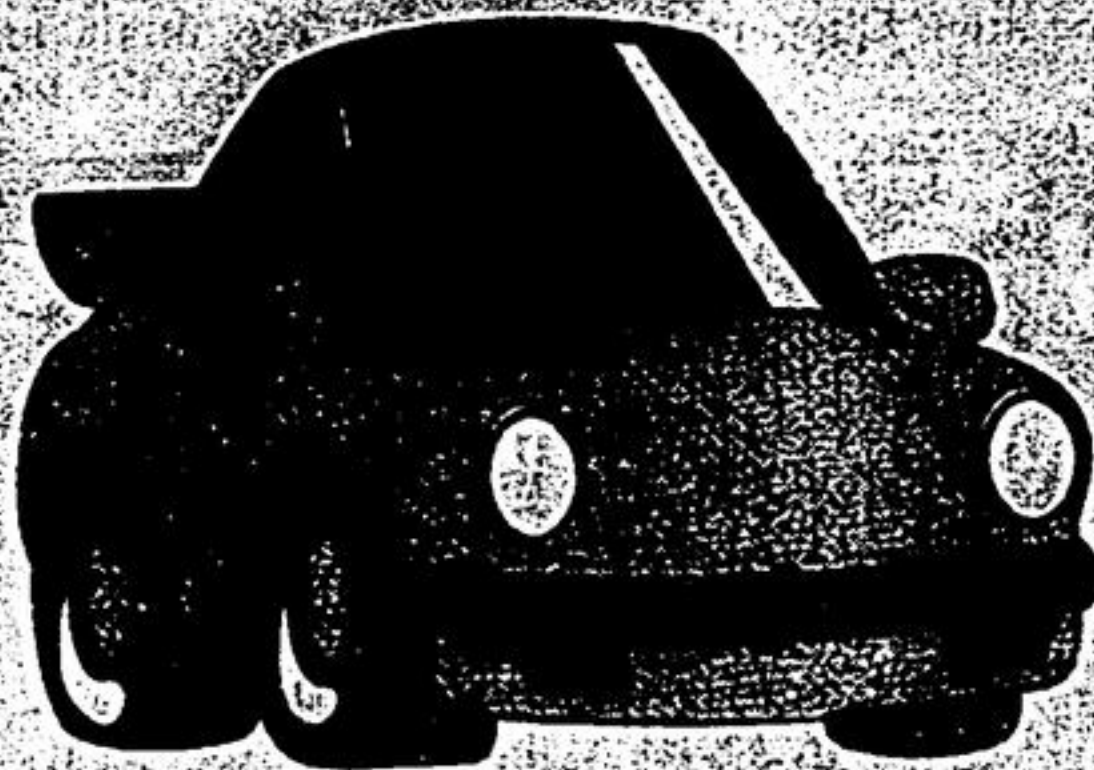
TUESDAY, FEB. 7
REFRESHMENTS WILL BE served after the Valentine Skate at the weekly Adult Pleasure Skate at the Whitchurch-Stouffville Recreation Centre. Skating from 8 to 9 p.m. The fun is designed for everyone 25 years and older. Adult skating is held until April 4. Admission is \$3. BRING YOUR BROWN bag

and learn more about the Albert Barnes' collection through a film series at the Latham Gallery in the Whitchurch-Stouffville Public Library, beginning at 12:15 p.m. The works of impressionist Edouard Monet will be featured. The library is located at 6240 Main St., Stouffville. For more information call 640-2395.

TRAVEL TIPS WILL be presented at a dinner meeting hosted by the After Five Club on Feb. 6, beginning at 7 p.m. at The School Restaurant at 4121 Fourteenth Ave., Markham. The

After Five Club is affiliated with the Christian Business and Professional Women of Canada. Cost is \$18 each. For reservations and more information call 889-7893.

INTRODUCING... MISTER COMPLETE AUTO CLEANING



GRAND OPENING SPECIAL:

- Complete Bumper to Bumper Starting at \$70.00
- Interior Complete Starting at \$40.00
- Engine Shampoo & Shine Starting at \$25.00
- Weekly Cleanups
- Exterior Hand Wash & Dried \$10.00
- Interior Vacuum Window & Dash \$20.00

Located at Main Street and 10th Line
6757 Main Street, Bay #2, Stouffville **642-8223**
BESIDE PAYRITE GAS STATION



OUTREACH HEALTH SERVICES

Outreach Health Services provides Advanced Nursing Footcare to Seniors and Diabetics in our community. A trained professional will visit you in the comfort and privacy of your home. The nurse will assess your feet, cut toenails, reduce corns, callouses and ingrown nails.

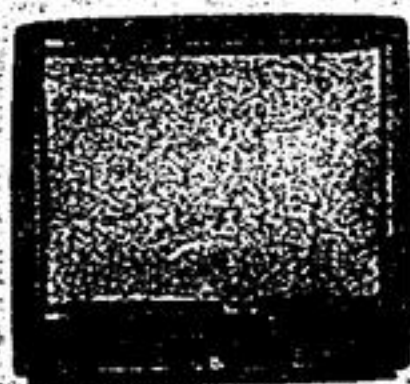
We are proud to provide services to Veterans through Veterans Affairs Canada.

For more information, please call 1-800-263-1863.

Everyone reads The Tribune

RCA SALE

27" F27634ET
Optimum Contrast Screen • Broadcast Stereo With dbx • Noise Reduction/SAP • Multi-Language On-Screen Display • 5-Jack Monitor Panel • 24-1/4" H, 26 5/8" W, 19-3/4" D



679⁰⁰
779⁰⁰

27" F27672ET
Optimum Contrast Screen • Broadcast Stereo With dbx • Noise Reduction/SAP • Multi-Language On-Screen Display • 5-Jack Monitor Panel • 24-1/4" H, 26 5/8" W, 19-3/4" D



735⁰⁰
849⁰⁰

31" F31632ET
Multi-Language On-Screen Display • 5-Jack Monitor Panel • 27-1/8" H, 30-1/4" W, 21" D



999⁰⁰
1089⁰⁰

35" F35672MB
Optimum Contrast Screen • Multi-Language On-Screen Display • 5-Jack Monitor Panel With S-Video Connector • 32-1/4" H, 34-7/8" W, 23-1/4" D



1779⁰⁰
1969⁰⁰



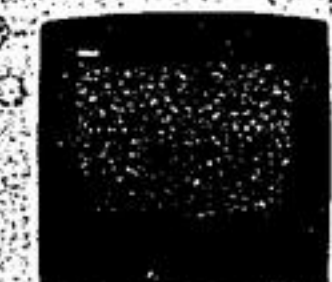
46" DEMO
1945⁰⁰

COMPARE
2299⁰⁰

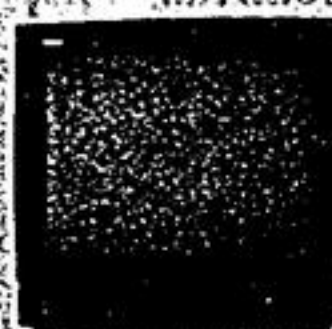


Newly-Designed Remote Controls Colourful, comfortable, easy-to-understand remotes operate every feature and function of your RCA television. Master Touch® Universal Remote models also control virtually all brands of VCRs, cable boxes and RCA Home Theatre™ video components.

13" E13323SE
Multi-Language On-Screen Display • Caption Vision • Closed Caption Capability



249⁰⁰
299⁰⁰



20" F20602SE
Master Touch® Universal Remote • 19-1/8" H, 20-1/4" W, 19-3/8" D

339⁰⁰

379⁰⁰

CARD'S & APPLIANCES

5758 Main St., Stouffville
640-3622-3623

LIQUIDATION/CLOSEOUT SALE

This is our last week

DOORS OPEN THURS. 7 P.M. - 10 P.M.

W. Wilson & Co. in its capacity as Auctioneer & Liquidator, on behalf of a Secured Creditor, will supplement and offer for sale, the inventory of the Gallery House.

IMMEDIATE INVENTORY LIQUIDATION

Sale Conducted by:
M. WILSON & CO.
AUCTIONEERS • LIQUIDATORS
APPRAISERS • INVENTORIES
905-479-7253

The **GALLERY** House
LIMITED EDITION ART, FINE FURNITURE & COLLECTIBLES
4961 Hwy. 7, Unit #1

This is it!
Don't miss out.
When it's over,
it's over.

"First Born"
by Carole Black
Issued price \$160.00
Now \$39.95

"A Winter Visit"
by Allan Kingsland
Issued price \$200.00
Now \$49.95

"Foggy Morning"
by Herbert Pitt
Issued price \$110.00
Now \$22.00

All Door Crashers are limited to the first 10 customers, one print per person, your choice.

4961 Hwy. 7, Unit 1
Just west of McCowan on south side of Hwy. 7 (Just west of Bullock)



Other Artists include:
Bateman, Doolittle, Les Tail, Dyer, Lumbers, Jack Reid and too many others to list.

Thurs. 7 p.m.-10:00 p.m.
Fri. 7 p.m.-10:00 p.m.
Sat. 10 a.m.-5 p.m.
Sun. 11:30 a.m.-5 p.m.

NOW UP TO
80% OFF

TERMS: Payment by Cash, Visa, MasterCard. Sorry, no personal cheques. All sales final.