

**FINANCIAL SERVICES**  
*The Best Choice is Here!*

TERM	GIC	RSP
1	8.15%	8.15%
3	8.75%	8.75%
5	9.25%	9.25%

Rates subject to change  
 GIC'S • RRSP'S • MUTUAL FUNDS • LIFE INSURANCE • ANNUITIES • RRIF'S • TAX PREPARATION • MORTGAGES  
 137 Main St. N. Markham 471-2311

# The Tribune

Stouffville Weekender

*Auto Express*  
**MERCEDES BENZ**  
 REPAIR SPECIALIST  
 172 BULLOCK DRIVE, UNIT 31  
 MARKHAM  
 471-8660

Vol. 11 No. 3 A Metroland Community Newspaper Saturday, January 21, 1995 44 Pages 50¢ (47¢ plus 3¢ GST)

## Ed Grimshaw sentenced to 15 months

By BRUCE STAPLEY  
 Correspondent

Ed Grimshaw, former trea-

surer of the Whitchurch-Stouffville Minor Hockey Association was handed a 15-month sentence on two counts of breach of trust and theft of \$17,380.86 from that organization, late Friday. Justice McIsaac at Whitby

Court, passed sentence on Grimshaw, ending a four-and-a-half year process.

He began to serve his sentence immediately. Grimshaw is eligible for parole in five months.

Crown prosecutor Mary Lou Dickie had asked for two years behind bars, the usual minimum sentence for similar crimes. After sentencing, she said somewhat tersely that, "it's finished."

Det. Sgt. Fred Kerr, who has been in charge of the investigation, said, "Justice has been done. Mr. Grimshaw was in a position of trust. He has to answer to the public," Kerr said. "Hopefully this sentence will act as a deterrent," Kerr added.

The court ordered compensation be made to the WSMHA, and it was announced at Friday's proceedings that the full amount will be mailed to the organization Monday morning

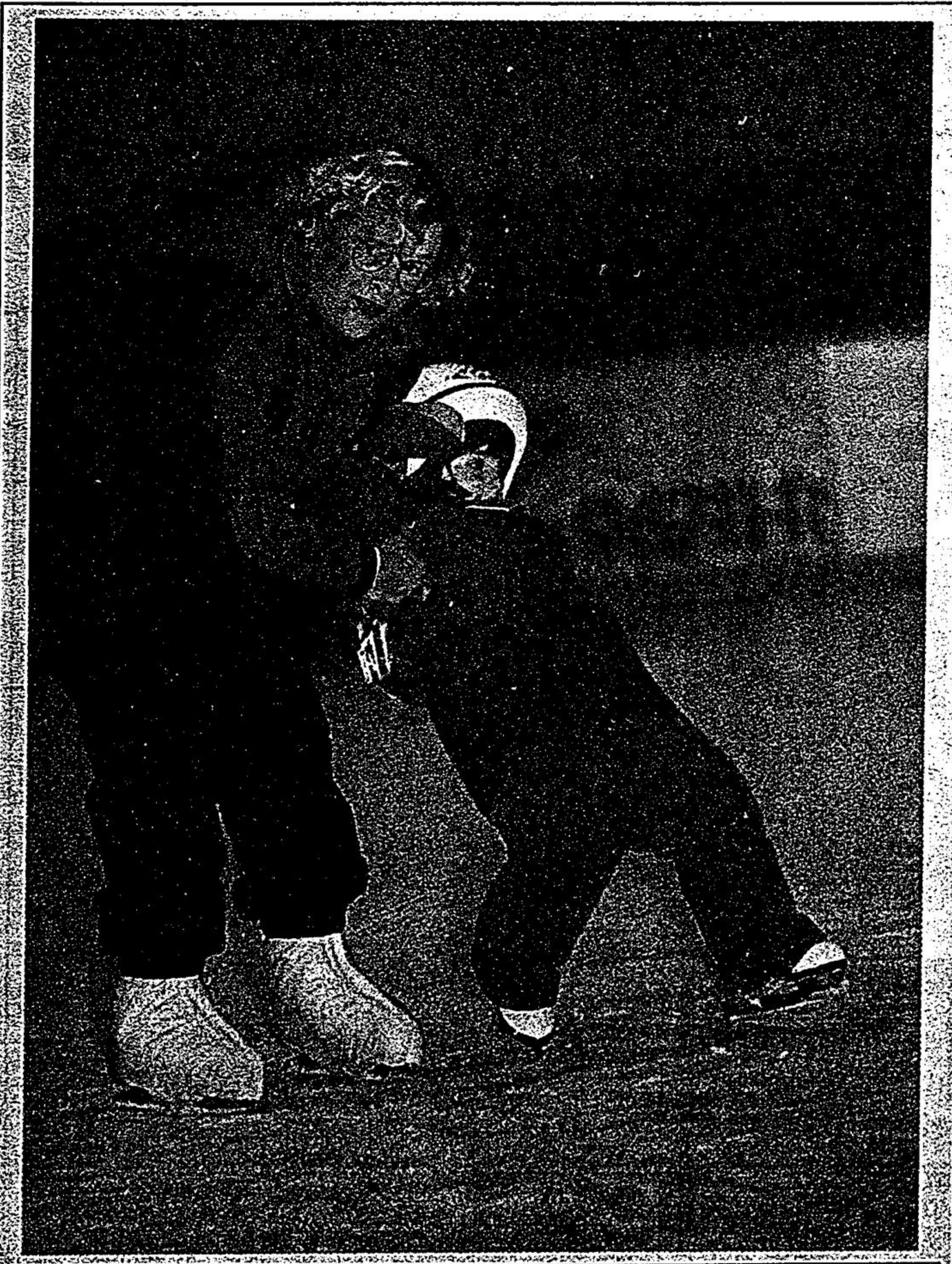
by lawyer Brian Ward, Grimshaw's lawyer.

Grimshaw, on his way out of court for processing, asked Jack vanKoughnet, (the treasurer who took over from Grimshaw with the WSMHA and uncovered the missing funds,) "Are you happy Jack-boy?"

vanKoughnet, who said he has been upset about the whole procedure since it began, simply returned "No."

Grimshaw, 59, was to undergo heart surgery last fall but the procedure had been put off twice. Sentencing in the case had been postponed twice to accommodate the surgery, which has yet to take place.

The court recognized that Grimshaw was in poor health. His condition and letters of support from residents of Stouffville may have contributed to the sentence being less than the two years the prosecution had requested.



**Whoops!**  
 Stouffville Figure Skating Club instructor Jean Barclay helps Sarah Murray regain her balance at the club's tot skate on Thursday morning at the Rec Centre.  
 Photo/SJOERD WITTEVEEN

## Off-track betting coming to east end restaurant

By MIKE RUTA  
 Staff Reporter

Chariots Motorsport Restaurant, closed for renovations, will re-open next week as Ricci's East, and will feature televagering downstairs.

Vince Ricciardi, co-owner of Ricci's in Newmarket, is leasing the former Chariots. He said televagering is like being at the racetrack and placing a bet.

"It's basically everything you see at the track, minus the track," he said. "You pick your horse, you bet on your horse, and (if you win) you collect on your horse."

Ricciardi stressed that there are strict regulations set down

(Please see page 3)

## Woman struck by car

A 20-year-old Markham woman was treated and released from Markham-Stouffville hospital after being hit by a car in Stouffville Thursday night.

At about 6 p.m., Claire McKenzie, of 33 Snider Dr. in Markham, was crossing Main St. just east of West Lawn

Cres. Police said she was in the middle turning lane when a car, attempting to get around a stopped vehicle, struck her down.

Police said she received serious but not life-threatening injuries including a fractured left knee.

A 22-year-old woman from Port Perry, has been charged with careless driving.

**LARRY COTTER**  
**FORD LINCOLN MERCURY**  
**NEW & USED CARS**

905-640-4541

**LEASING**  
 Today's easy way to drive

STOUFFVILLE RD.  
 HWY. 48  
 MAJOR MACKENZIE DR.  
 HWY. 47

**PARTS & SERVICE**      **PARTS 905-640-4566**

*small town atmosphere - - - big city professionalism*