



Experience A Country Christmas

TRIBUNE, NOVEMBER 30, 1994, P. 9

Gift wrapping ideas for weary shoppers

After hours of trying to find a parking space at the mall, fighting crowds at the store and finding the perfect present for everyone on your list, who has the energy and enthusiasm to add personality to the wrapping of gifts?

Wrapping gifts in fun and creative ways makes each present even more special. And it can be as easy as using materials that are already in your home. Following are some holiday gift wrapping ideas that will add a warm, personal touch to all of your gifts:

• Fool your friend who always guesses what is in each box by wrapping a small gift in a large box and then wrap that box in an even larger box.

• Design your own wrapping paper by using plain white wrapping or packaging paper and writing notes, quotes or holiday greetings all over it.

Use stickers, stamps or sponges dipped in paint to add color.

• Brighten your packages by placing live flowers in the ribbons. If the live flowers will not survive due to time or travel, make flowers using embroidery floss (available at any craft or needlework store) and floral supplies.

• Add humor by wrapping your gifts in the Sunday comics - the recipient will appreciate your effort to recycle!

• Give a flair to your wrapping style by making floss tassels to go with or in place of your ribbons. The tassels can be made in holiday colors or to match the paper.

And the best part is your friend or family can use them again to dress up their shoes, key chains, barrettes, or anything they own.

Holly wreath to make for tree or door

The Holly Wreath is a symbol of hope and of renewed growth in winter. Here's how to make one.

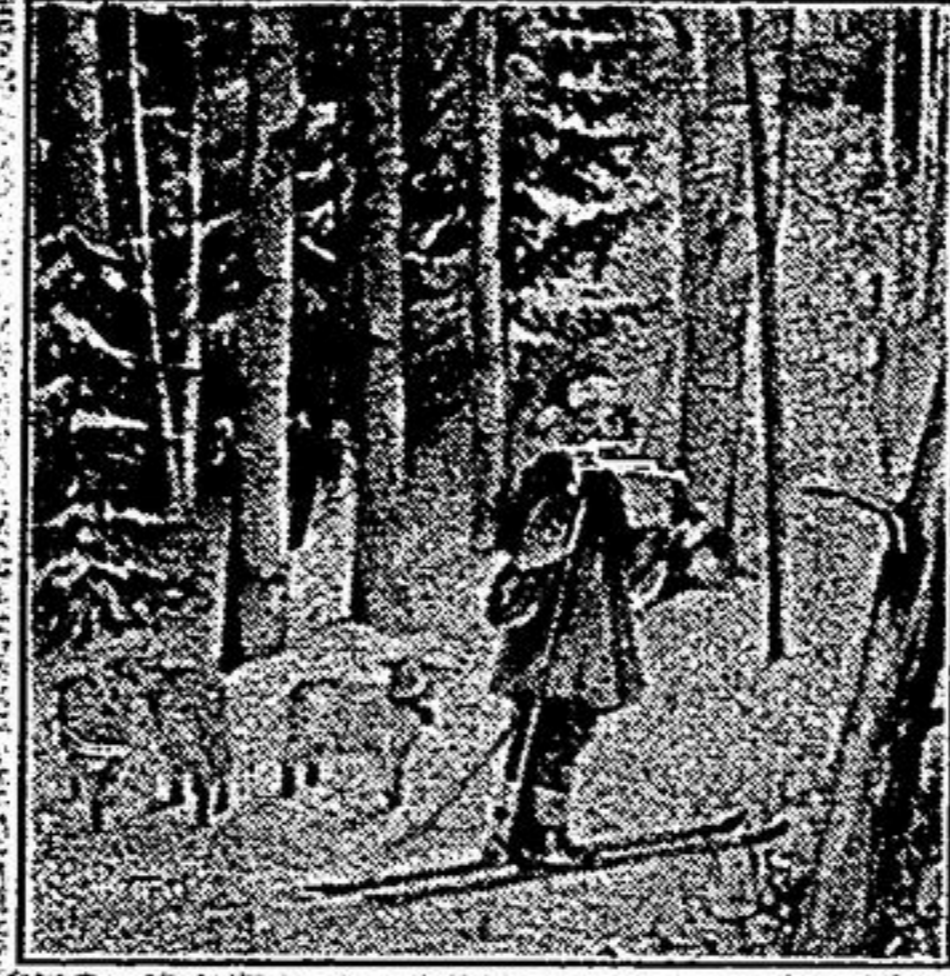
1. Cut out the centre of a paper plate.
2. Punch a hole in the plate rim. Put a piece of string through the hole and tie to make a loop.
3. Cut red and green tissue paper into 3 cm squares.
4. Take each square and wrap around the

eraser end of a pencil.

5. With the tissue paper on the end of the pencil, glue the paper onto the wreath. Pull out the pencil, leaving the tissue square glued to the paper plate. Continue until the wreath is filled, making sure to mix in lots of red berries with the green holly leaves.

6. Glue or staple on a bow or punch a hole in the plate and loop a string through to hang.

Trisha Romance



\$220.00 Cdn. *LOST SHEEP* Image: 14 1/2 x 11 1/4
SPECIAL OFFER: \$299.00 FRAMED

SAVE! SAVE! SAVE!
Pre Christmas Sale On Now
Most items in stock

Bus. Hours:
Monday - Thursday
10:00 a.m. - 6:00 p.m.
Friday - Late Night
10:00 a.m. - 8:00 p.m.
Saturday
10:00 a.m. - 5:30 p.m.
Sundays
11:00 a.m. - 3:30 p.m.



GOLDEN EAGLE ART GALLERIES INC.
The most complete Gallery for all your art needs
18 Ringwood Drive, Stouffville
Tel: & Fax: (905) 642-2279

Bring in this coupon & receive \$50.00 off on any framed edition print value \$250.00 or more



Thank you for a great year!

JOHN LORD'S BOOKS

6356 Main Street, Stouffville

KEIRSTEAD FAMILY OF ARTISTS



"SNOW BUNNIES"



BOOK \$55.00



"EVENING GLOW"

A Delightful Selection of Gift Ideas ...

Keirstead Bone China Mugs

\$15.00 ea. or 4 for \$55.00

Matching Coasters \$10.00

Original Oil Paintings and Watercolours
Limited Editions and Textured Reproductions
Hand Crafted Christmas Ornaments!

THE MENGER GALLERY

2243 STOUFFVILLE RD., BETWEEN HWY. 404 & WOODBINE AVE.,
P.O. BOX 159, GORMLEY, ONTARIO, L0H 1G0

Tues. - Fri., 10 a.m. - 9 p.m.
Sat. 10 a.m. - 5 p.m., Sun. 1 p.m. - 5 p.m.

(905) 887-5795

Locust Hill Mercantile

For old fashioned service and quality products.

Create the look you want - furniture, and accessories customized to your taste!
Hand-made wreaths, crafts & gifts for all your Christmas needs.

7861 Highway #7 East
Locust Hill (just 4 km east of Hwy. 48), Ontario
Open Fridays 6 - 9 p.m., Saturdays 10 - 6 and Sundays 12 - 5
Starting Nov. 28th open everyday until Christmas

COME AND SEE WHAT WE'RE ALL ABOUT!

In our NEW Gallery!

Cynthia Cupples
POTTERY ETC.

Unique & Beautiful Gifts!

Glass Baking Preserves
Clothing Paintings

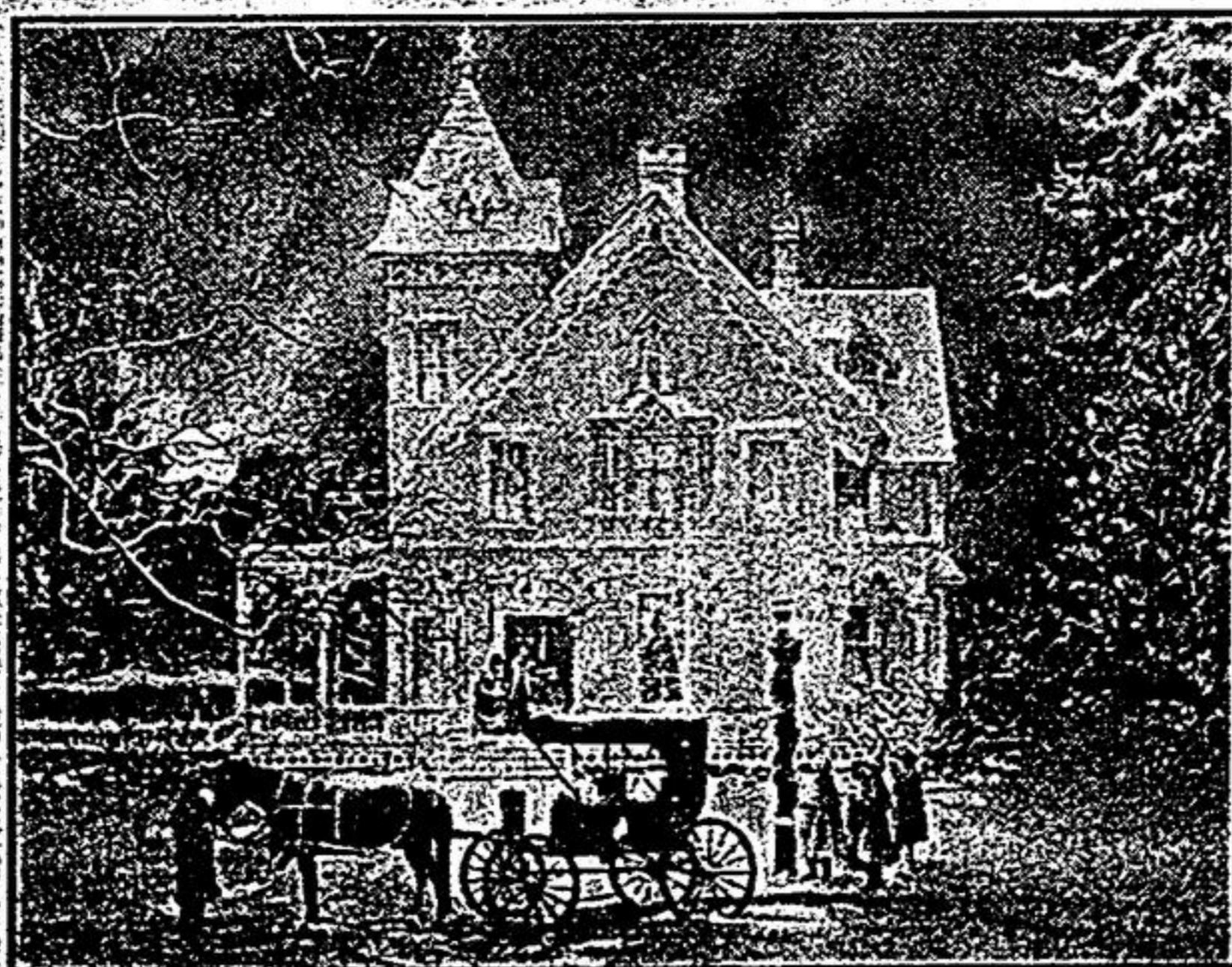
Open Weekends

Until Christmas
10 am - 4 pm

(905) 852-5615

Between Sandford Stouffville & Davis Drive on 3rd Conc.

WALTER CAMPBELL



"Christmas Magic"
Framed \$140.00

Come to do some Christmas shopping and see our 6 foot Santa!

Merry Christmas

from Lynn & Walter Campbell & family

at
Gingerbread Gallery Ltd.

R.R. #4, Sunderland, Ontario L0C 1H0

(705) 357-2252