

Decision '94

Mayors respond to group

Editor's Note: The Whitchurch-Stouffville Citizens Association executive presented a series of questions to the mayoral candidates this past week. Here are the questions and their responses:

Dear Mayorality Candidate:
WSCA would appreciate your written response to some of our concerns. We are a non-political association and will make the questions and answers available to our members and the public. This is our way of getting to know you and your commitments.

1. Stouffville is rich in heritage resources that remain poorly protected. What is your stand on ownership rights vs heritage preservation?

2. Do you feel Stouffville Council can plan responsibly for the future and address needs and concerns of present residents using an Official Plan dating back to the 1970s?

3. Do you support the Crombie Commission report for future development? Elaborate your stance.

4. Farm-gate sales in York Region made more than 152 million dollars in York Region (1991). Spin-off industries increased that to one billion dollars.

a) Will you actively support farming as a viable business in Whitchurch-Stouffville?

b) Will you actively prevent the exploitation of class 1-5 agricultural land for commercial developments such as tack shops and antique outlets which claim they are accessory uses to farming?

5. The effect of the Ballantrae-Muselman's Lake communal water system on the aquifer in our area must be considered.

a) What protection can you offer our water supply?

b) How will you deal with this issue at the Regional level?

6. Please comment on your opinion of Whitchurch-Stouffville's image at Regional Council.

7. By-laws concerning the dumping and burying of garbage and lack of weed control on personal properties are not being enforced in our area. How would you deal with this as mayor?

8. Are you interested in working with our association?

DOUG ALLES

1. The protection of heritage resources can only occur if there is sufficient public protection and the identification of the danger of these resources. When a conflict arises between the need to protect these heritage interests and property rights of the owner, it often appears that there are only two courses of action; i.e., side with the owner or with the concerned public. I believe that there can be alternatives which take into consideration the rights of both parties. The best approach is to be open-minded with respect to potential solutions.

2. The official plan does not date to the 1970s. It was first adopted by Council on October 14, 1980. It is an ongoing document which has been continuously updated by Council since that time. I suspect you are really referring to the Town Zoning By-Laws, some of which date back to January 1972. My understanding is that the town could not reach an agreement with the property owners in the area included in this by-law. As a consequence By-Law 72-7 remains in effect today.

3. It has been sometime since I reviewed the Crombie report. I recall that I was favorably impressed with most of the report and agreed with many of the findings. However there are some areas of disagreement. During this election period there is insufficient time for me to review it, so I cannot be more specific.

4. a) Yes
b) These uses are permitted by the current bylaws. We can be more productive working with the owners to persuade and ensure that:

(i) farmland remains in production
(ii) uses are compatible with a rural lifestyle.

5. The water supply is controlled by the Region. At the regional level I will work to make sure:

a) that it proceeds on the basis that the aquifer can support the existing users as well as the new development.

b) that the region understands and accepts its responsibilities to all users of this aquifer whether on public or private water systems.

We all rely on the reports of the experts who were hired by the region to study the effects of a communal water system on the aquifer. I will thoroughly scrutinize the credentials of these 'experts' to make sure we can be confident of their assessment.

6. In my opinion we are regarded as a junior partner. This is demonstrated by the wording in the proposed official plan for the region which suggests the amalgamation of smaller communities into the larger municipalities. A strong voice from our community can make a difference.

7. Increased fines, signage, and stricter enforcement.

8. I am interested in meeting and working with all associations for the betterment of our community.

WAYNE EMMERSON

1. I feel that we need to preserve our heritage but that we cannot put an undue burden on our residents. I will work with both sides to ensure that our resources are protected.

2. I think that the official plan needs to be reviewed with all residence of Whitchurch-Stouffville.

3. I would like to reread the Crombie report before giving you my response.

4. a) I have and always will support the farming community.

b) I do not feel that these uses are accessory to the farming community. Class one to five farm land should be used for farming.

5. I will do my best to protect all residents water supply in Whitchurch-Stouffville.

6. I feel we have had no respect at the region in six years. We need a professional approach at the region.

7. I will deal with this issue on a complaint only basis. We will enforce our bylaws.

8. I will be happy to work with all groups in Whitchurch-Stouffville. I hope your group is concerned with the welfare of all of Whitchurch-Stouffville and don't have the attitude not in my back yard. I wish one of your members had considered running in the election. The farming community has always been a large contributor to the quality of life in Whitchurch-Stouffville and I hope it will always remain so. Executive member Vivienne Gornall knows my feelings and can relate them to the rest of your group. I care for this community and am looking forward to attending a meeting as Mayor of Whitchurch-Stouffville.

KEN PRENTICE

1. First, I agree with your initial statement. Sadly, the heritage resources are poorly protected in Whitchurch-Stouffville. With no apparent will no direction from the current Council to establish a LACAC with powers to designate heritage sites.

To answer the question portion, however, one has to refer to the Ontario Heritage Act. It is my contention that the Ontario Heritage Act (OHA), if followed to the spirit of the law, does in fact work at allowing a community to preserve its heritage resources while respecting the rights of the property owner. The value of a heritage piece of architecture in the OHA is that value assigned by the community at the grass roots level. The community decides. Respect for private property rights are provided for only allowing a 180 day delay in any demolition permit of a heritage structure. Following this Council would have the option to compensate the private property owner.

For restoration projects on heritage structures the Province recognizes the rights of private property owners by, (in the past) permitting grants for certain types of approved renovations to buildings.

We have a great resource with our heritage structures in Whitchurch-Stouffville, and rather than see them as

(Please see page 16)

elect... **WAYNE**

EMMERSON X

MAYOR



Your Future is here.

My Future is here.

With Wayne EMMERSON as MAYOR

We all have a Future.

Your support is important.

Vote on

Monday, November 14th.

For a ride call (905) 640-2987

Authorized by C.F.O. for Candidate Wayne Emmerson

FACT:

69% OF THE PROPERTY TAX WE PAY GOES TO PAY FOR EDUCATION!

FACT:

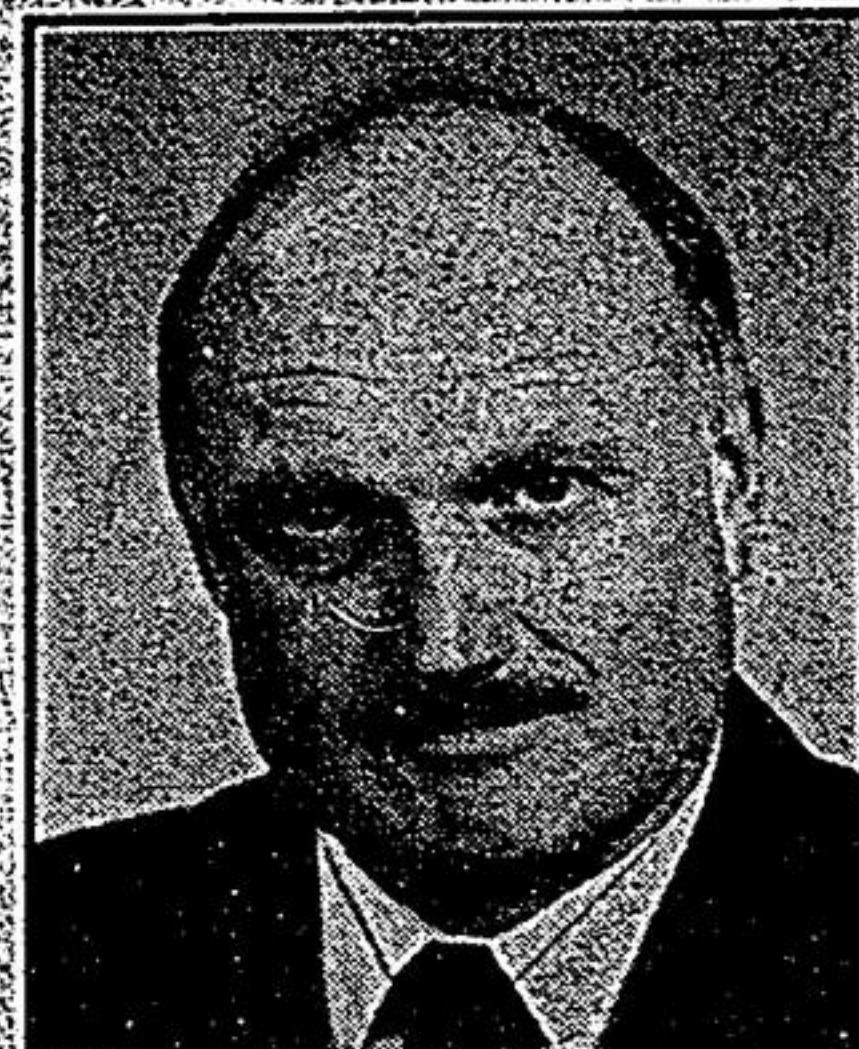
170% GREATER INCREASE IN OUR EDUCATION TAX IN 1994 COMPARED TO THE REGIONAL AVERAGE INCREASE!

FACT:

325% INCREASE IN THE YORK REGION BOARD OF EDUCATION TAX COMPOUND OVER THE PAST 15 YEARS!

With our taxes out of control, concern for our children's safety in school, parents concerned about lack of input, lack of information, the direction of the curriculum, limited resources for study and sports...

- IT'S TIME FOR A CHANGE -



elect
**GEORGE
BLAKE**
FOR
TRUSTEE

FOR YOUR INPUT, INFORMATION, TO BE PART OF OUR ELECTION TEAM, TO ATTEND A NEIGHBOURHOOD MEETING OR TO HAVE ONE, PLEASE CALL GEORGE AT: (905) 888-9966

Authorized by the C.F.O. for the Committee to elect George Blake



A BRIEF MESSAGE FROM HARRY BOWES

I apologize if I have not been able to contact you personally, you know that personal attention to your concerns has been my main attribute.

You may have questions about the Ontario Tax Reform Commission and the Educational Development charges which should decrease the mill rate within the next year. You may have questions what the board did to decrease the budget this year and what it is doing for next year. You may have comments on the inferences about lack of input and lack of information. I know the answers to slashing the budget and you will as well when you talk to me.

The expertise and commitment from an experienced trustee is needed for the next three years.

Re-Elect
HARRY BOWES FOR BOARD



Authorized by C.F.O. for candidate Harry Bowes