

ANOTHER PROPERTY SOLD



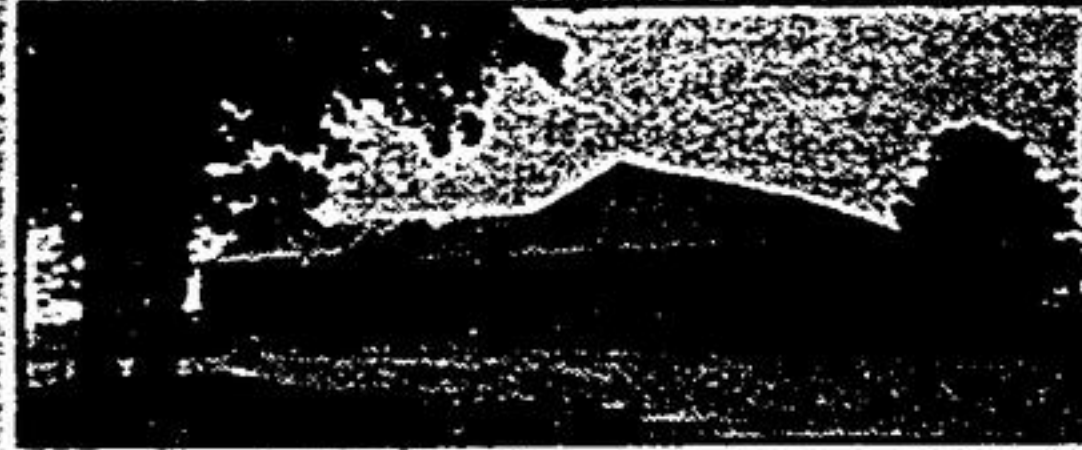
95% OF LIST PRICE



The one name you need to know

Jennifer Kenny*
852-9781
649-2231

FAMILY REALTY RESULTS INC.



ROOM WITH A VIEW

4 bdrm. house + 2 bdrm. mainfloor granny flat + 22 acres of land with great views on paved rd., 15 mins. N/E of Uxbridge. \$229,900. Jennifer Kenny*, 852-9781, 649-2231.

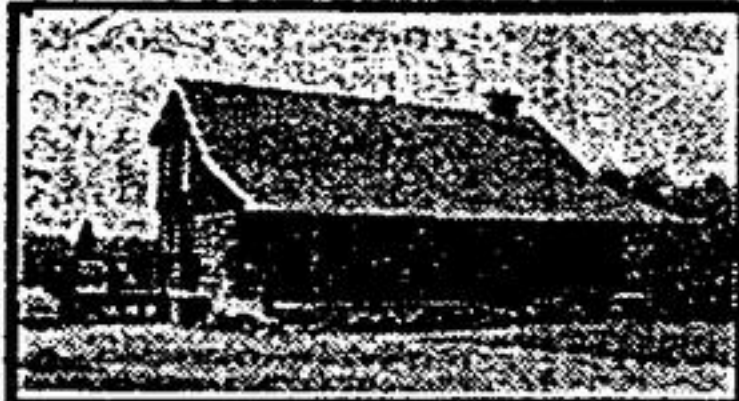
UXBRIDGE



Mary Lynne MacVicar*
President's Award of Excellence



FAMILY REALTY RESULTS INC.
Independent Member Broker
Family Realty Network



BACK TO YESTERYEAR REDUCED TO \$239,900

8 year old custom built log home on 4 acres. Very private in village setting. 3 beds, 2 stone fireplaces. Full partially finished basement.



ROOM WITH A VIEW \$174,900

Snowbirds or family this classic condo with walkouts, skylight, whirlpool, central air + vac. Finished lower level + 2 beds with ensuite.

NEED FARM PROPERTIES

50 - 100 acres with large home + buildings
For a free opinion of value - Please call
MARY LYNNE MACVICAR 649-2231 or 852-9781

THE MEADOWS OF UXBRIDGE



- At Kevin Doble properties we don't believe in clearing the land and putting up a subdivision
- We believe in intergrating homes and neighbourhoods into the existing natural environment
- We save trees and we plant new ones. We reroute and enlarge streams and build nature trails and bike paths and playgrounds
- We reserve the wildlife and the delicate balance of the natural elements of our properties
- At Kevin Doble properties we build our homes around the forests not through them
- We try to maximize the enjoyment that people discover when they wander through the valley that surrounds the Meadows of Uxbridge
- We protect the natural environment that characterizes our neighbourhood

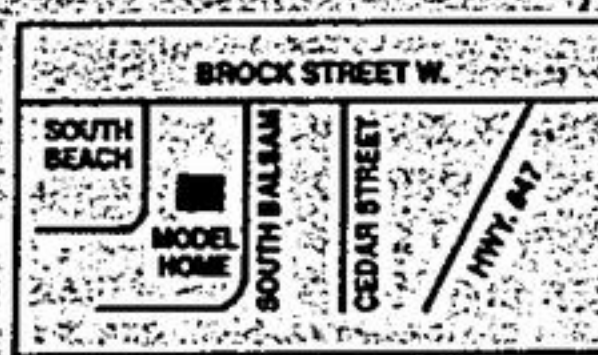
The result of our efforts is one of Ontario's finest collection of family homes. Homes with full basement walkouts and forest lined lots. Homes with spectacular views from every window. Homes that take you back to a purer and simpler way of Life.



Kevin Doble's
Premium Forest Lots



at
The Meadows of Uxbridge
"Where a Better quality of life is the life"



SALES OFFICE HOURS

Mon.-Fri. 1-7 p.m.
Closed Thurs.
Sat. & Sun.
12 Noon - 6 p.m.

from just

\$187,900

(905) 852-9118

CALL COURTNEY NEWMARCH (905) 471-2121 24 HR. PAGER
CENTURY 21 ARMOUR REAL ESTATE INC.



PORT PERRY PLAZA

(905) 985-9777 FAX 985-9161

Member Oshawa & District Real Estate Board
Member Lindsay & District Real Estate Board
CALL TOLL FREE 1-800-448-1056

OPEN HOUSES SUNDAY, OCTOBER 23 1:00 - 3:30 P.M.



APPLE VALLEY - PORT PERRY

Jeffrey built, raised bungalow with 3+1 bdrms., eat-in kit., lovely fin. bsmt. with wall to wall brick fireplace and heatilators, 2 baths., close to schools and shopping. Immaculate, freshly decorated home situated on a mature lot. Asking \$159,900.

Host: Al Bertrand*
Directions: 26 Orchard Rd., Port Perry.



LITTLE BRITAIN

Custom built 2280 sq. ft. brick and stone bung. situated on 1 acre plus lot, mature landscaping, lge. prin. rms., family kit., oak cabinetry, 3 washrooms, intercom, plus much more. A must to see. Only \$179,900.

Host: Bill Rae*
Directions: Durham Rd. 2 north of Port Perry to County Rd. 28 - east to Rd. 6 to Little Britain, follow signs.



OTTAWA STREET - PORT PERRY

Quality built 3 plus bdrm. bung. features fully fin. w/o basement with rec. rm., fireplace, hot tub, bar. Enclosed sunporch, 2 w/o's, attached garage, mature lot. Close to all amenities. Immediate possession. Come and view to appreciate, call (905) 985-9777. Asking \$209,900. Host: Judi Hewitt*
Directions: 33 Ottawa St., Port Perry.



PORT PERRY CENTURY HOME

Centre hall plan, large master bdrm. with ensuite, main flr. fam. with fieldstone fireplace and w/o to patio. Formal dining room, lots of original trim. Mature lot, vendors want it sold ASAP! Come view the value here for only \$179,900. Host: Chuck Willes*
Directions: 339 Queen Street, Port Perry.



WATERFRONT HOME ON LAKE SCUGOG

2000 sq. ft. 3 bdrm., 3 bathroom bung., lge. eat-in kit. with loads of cpbrds., indoor BBQ, skylight, liv. rm. with fieldstone fireplace, cathedral ceiling, sep. din. rm., fam. rm. on mn. flr., fin. rec. rm. in bsmt., forced air oil furnace, cent. air. Listed at \$194,900. Host: Cliff Crowell*
Directions: 7A to Island Rd., north to Pine Point Rd., east to lake, turn right to sign.



SCUGOG POINT ESTATES ATTRACTIVE BUNGALOW

5 year old 3 bdrm. raised bung., lge. eat-in kit., w/o to deck, 2 baths. (1-4 pc. & 1-3 pc.) Lge. fin. downstairs fam. rm. with air tight stove & w/o to patio. Shared 1/26 ownership in 100' lakefront lot for boating/fishing. Host: Chuck Preston*
Directions: Hwy. 7A east to Nestleton north to Hwy. 57, east to Scugog Pt. Rd., follow signs.



APPLE VALLEY - PORT PERRY

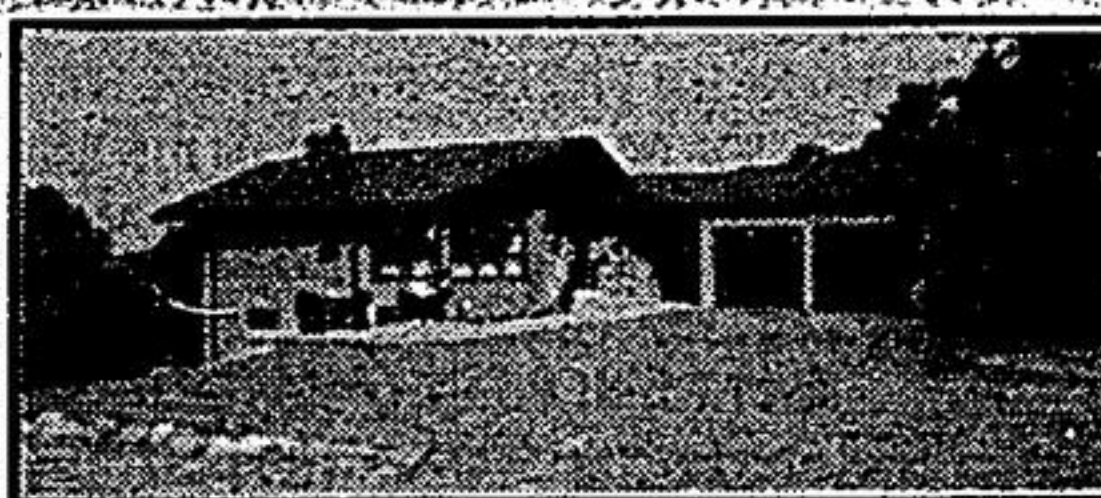
Quality 3 bedroom bungalow, lge. oak kit., main flr. family rm. with gas fireplace, Master ensuite, main floor laundry, finished rec. room, 2200 sq. ft. of finished home. Asking \$184,900.
Host: Ron Smith*
Directions: 18 Lakeview Dr., Port Perry.



Lee Weldon
Associate Broker
416-510-1284
905-852-6143



Re/Max Scugog Realty Limited
9 Main Street, South, Uxbridge



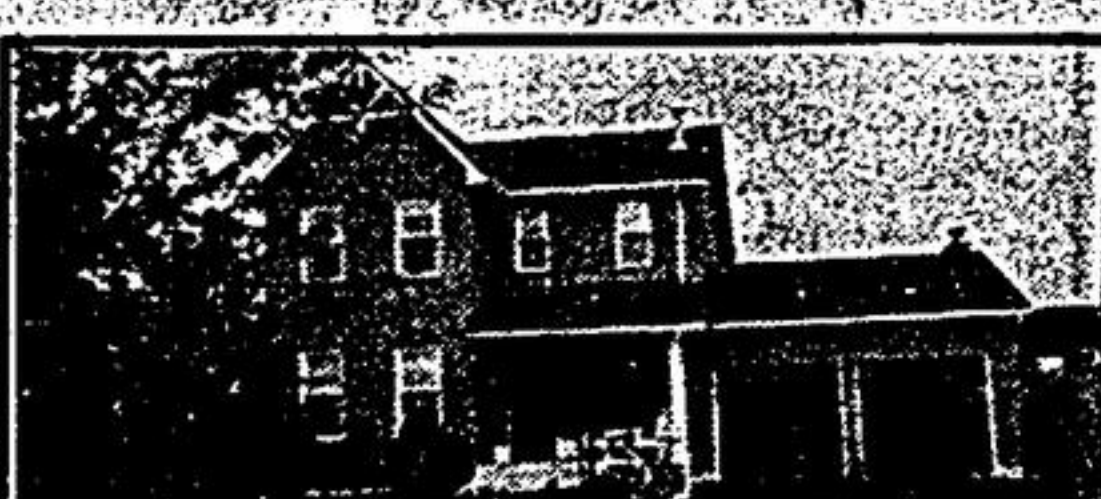
AWESOME VIEW! HORSES & HARDWOOD!

Uxbridge - \$299,000. - 20 fabulous acres - unique & well built home nestled on hillside - recent 5 box stall barn! A rare find! Call Lee Weldon**



WANTED - SOLITARY NATURE LOVER!

N/E Ballantrae - 1.25 gorgeous acres - pond - river - hwdw. forest - charming 1 bdrm. - fully & prof. refurbished! Very cozy. \$148,900. Call Lee Weldon**



THE RIGHT STUFF! UXBRIDGE

2300 sq. ft., very spac. kitchen, open to very spacious family room! Large lot backs greenbelt, end of cul-de-sac! Call Lee Weldon**



WANTED - EXTENDED FAMILY

With an appreciation for taste & quality. If your needs require 4500 + sq. ft. set up for large family (4 bdrms., 4-1/2 baths.), PLUS 1700 sq. ft. 1 bdrm., 1 bath, sep. suite. This could be your opportunity! Wonderful 3 acre ravine lot - pool - Listed at \$549,000. Northeast Stouffville. Truly a 10! Lee Weldon**



VERY GRANDE IN OLD UXBRIDGE!

\$269,900.
Formal dining (20' x 15') & living - 11' ceilings! High baseboards, orig. staircase (curved), ceiling mouldings, etc. 200' treed lot. A scarce residence! Motivated vendor.



CAREFUL - IT'S LOADED! \$329,900
3100 sq. ft., built in '89, hilltop setting - valley view - open concept - 25' kitchen (island & granite counters), wet bar in family room - fabulous master suite! Atmosphere unlimited! N/E Uxbridge. Lee Weldon**