



SUTTON GROUP - CROWN REALTY LTD.
AN INDEPENDENT MEMBER BROKER
(416) 752-6909



EARL ELSON**



ALAN ELSON**

EDGE OF STOUFFVILLE

Reduced from \$229,000 to \$199,000. Super price for this 3 bedroom home! Fireplace in living room, walkout from eat-in kitchen to spacious deck, full basement, lot backing onto open fields on 2 sides. Call Alan Elson*, (416) 752-6909.

BELIEVE IT OR NOT!

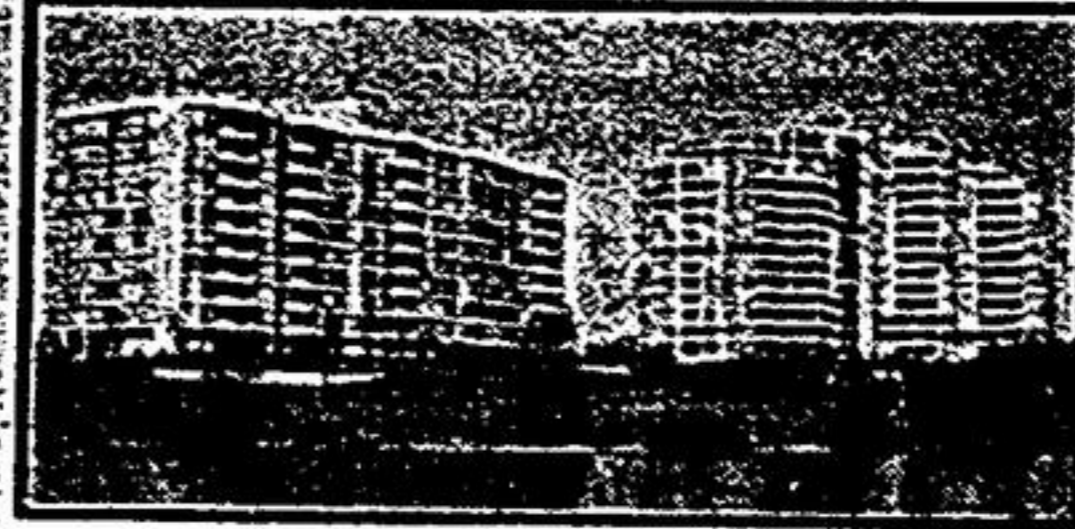
Asking only \$324,900. for this approx. 3600 sq. ft. home. This is a Century reproduction less than 10 years old, waiting for your finishing touches. 6 bedrooms, 4 bathrooms, huge main floor family room with massive fireplace. Plenty of oak cupboards in this kitchen! Florida eating area. Super lot. Earl Elson**, (416) 752-6909.

(416) 752-6909



RE/MAX Elite Realty Ltd.

WALDEN POND I



SENSATIONAL VIEW

Immaculate 2 bedroom with den, unobstructed pond view from large balcony and eat-in kitchen. Marble foyer, 2 baths, 2 car parking, abundant amenities.

Just Reduced - \$297,000
Call Grant Hall, Sales Representative for more information
(416) 494-7653

65 ACRE CORNER UXBRIDGE SOUTH

New 3300 square foot shop, older home, excellent views. Bush and cleared land, part in hay. Vendor will finance - priced below market. Vendor has bought.

Great Investment

Only \$229,000.

Call (905) 765-8406

COLDWELL BANKER - Expect the Best™ COLDWELL BANKER - Expect the Best™ COLDWELL BANKER - Expect the Best™



1ST CLASS REAL ESTATE UXBRIDGE

852-9765, 294-2796



1ST CLASS NEW LISTING

Custom built raised clay brick bung. on mature .39 acre lot, fully finished basement, 2 fireplaces, central air & vac, multiple w/o's to party size deck. \$229,900. Ian Morrison*, 862-9765.



COUNTRY AND CONVENIENCE

Desirable location, 1/2-acre on the edge of Uxbridge. Family and livingroom have fireplaces, 3+2 bdrm., 2 bathroom, finished basement. Won't last at \$177,000. Vicki Hopkins*, 852-9765/294-2796.



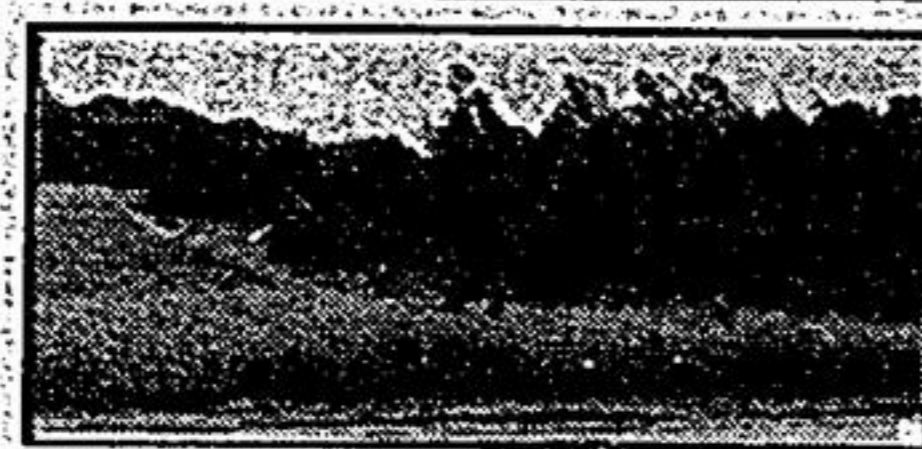
SO MUCH FOR SO LITTLE

Great starter in the heart of Uxbridge, commercial zoning. Lovely pine kitchen, 3 bdrm., 2 bathroom, family rm. with walkout, gas heat. Just listed - act fast. \$149,000. Vicki Hopkins*, 852-9765/294-2796.



HORSES - VIVIAN FOREST

House and barn nestled in the 5 acres of trees, backing onto forest. Custom 3 bdrm., 3 bathroom, brick bungalow. A rare opportunity, \$399,900. Vicki Hopkins*, 852-9765/294-2796.



\$46,700

2 acre treed building lot. Potential pond site. 15 minutes north of Uxbridge. Call Gordon Elford*, (905) 852-9765, 24 hr. pager.



A HOUSE FOR YOUR HOME!

\$179,000. 4 bdrm., 1-4 pc., 1-3 pc. bath, renovated, new kitchen, mature treed lot 55 x 198. Call Gord Elford*, 24 hr., 852-9765, 294-2796.



PRIVATE, PEACEFUL, PERFECT

\$142,500. 3+1 bdrm., 1-4 pc., upgraded carpet, windows, new shingles '94, 121 x 132 lot. Call Gord Elford*, 24 hr. - 852-9765, 294-2796.



NEW 4 BDRM. GST INCL!

\$159,000. New 3+1 bdrm., 1-4 pc., 1-3 pc. bath, quiet setting, tree lined street, good value. Gord Elford*, 24 hr. - 852-9765, 294-2796.

COLDWELL BANKER - Expect the Best™ COLDWELL BANKER - Expect the Best™ COLDWELL BANKER - Expect the Best™



An international network of independent member brokers

RE/MAX scugog realty limited
114 QUEEN STREET, PORT PERRY
independent member broker

985-4427

TOR. LINE: 428-1332

184 OFFICES THROUGHOUT ONTARIO



VICEROY WATERFRONT HOME

150 ft. on shoreline on Lake Scugog - 50 mins. from Markham. Private, treed lot with open concept home with cathedral ceilings, skylights and more. \$156,900. Brenda L. Casteels*, 428-1332, 24 hr. pager.



4 YEAR OLD LOG HOME

Constructed from 130 yr. old Mennonite logs, situated on 40.3 acres with a huge bank barn. Located east of Toronto. Listed at \$299,000. Brenda L. Casteels*, 985-4427, 24 hr. pager.



1+ ACRE WATERFRONT

1760 sq. ft. bungalow on parklike lot, 3 bdrm. fam. rm., den, open concept, living, din. & kit. Oversized double garage and lot - severance possibilities. Listed at \$209,000. Brenda L. Casteels*, 985-4427, 24 hr. pager.



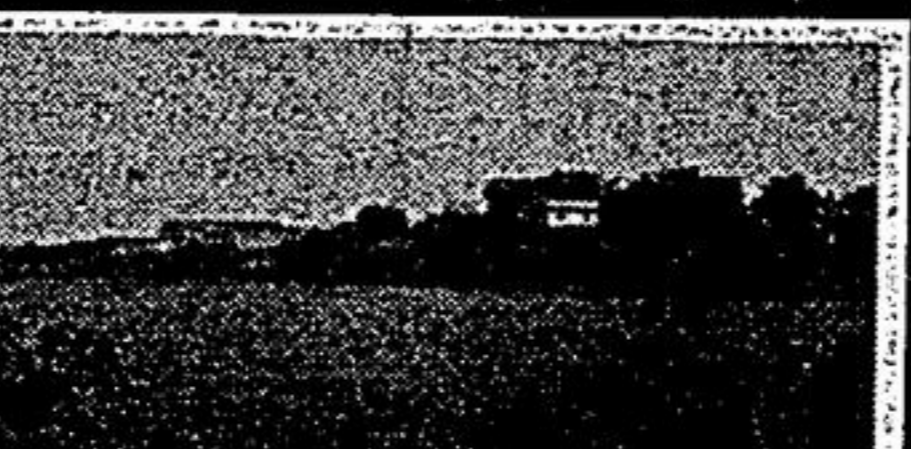
OVERLOOKING LAKE SCUGOG

Just 5 mins. from Port Perry, this 3 bdrm. bungalow offers a quiet location and a great place to raise your family. Large lot, new fam. rm. Call Don Harper* at 985-4427, 24 hr. pager.



10 ACRES \$199,900

4 bdrm., 2 bath home with mn. floor fam. room and large eat-in kit., mostly fin. rec. room, year-round stream, some trees, mostly pasture. Mark Puckrin*, 24 hr. pager.



50 ACRE FARM WITH A POND

This spacious, solid farmhouse overlooks fantastic spring-fed pond & rolling, scenic 50 acres, all fenced, metal barn & driveway. Lynda Kendry*, 985-4427, 428-1332.



LAKEFRONT-SCUGOG ISLAND

Life's a beach with this 4 bdrm. easy-care home just a few minutes from Port Perry. \$159,900. Lynda Kendry*, 985-4427, 428-1332.



LAKEFIELD-LAKEFRONT HOME

This fabulous 2200 sq. ft. home on nearly 2 acre lot, fronting on Lake Katchewan and has too many extras to list in this space. Finished top to bottom. \$248,000. Lynda Kendry*, 985-4427.



EXCEPTIONAL VALUE AT \$349,000

One of a kind scenic retreat of 15 acres of white birch. Custom built house secluded from the road. A rare find. For details call Craig Taylor** 428-1332 or 985-4427.



VENDORS ON THE MOVE

Excellent country property. Just reduced at \$139,900. Shows extremely well with 3 bdrms., w/o to deck to a large corner treed lot. Craig Taylor**, 985-4427, 428-1332.



YOUR CHOICE AT \$99,900

Call Craig Taylor** 985-4427, 428-1332.



LAND LAND LAND

✓ 99 acres Kinmount on Bacon Rd.
✓ Washburn Island waterfront lot listed at \$99,000
✓ Washburn Island back lot with walkout potential. \$49,900.
Craig Taylor**, 428-1332.



EXCLUSIVE LISTING AT \$309,000

Exceptionally built 4-level all brick split level on the water in the Seagrave area. Has brl appliances numerous walkouts to decks toward lake. Ask for Craig Taylor**, 985-4427 or 428-1332.

