

CMS Group responds to King's comments on sewage plant

Dear Editor,

To try and bring more light and less heat to the subject of Stouffville's possible sewage plant expansion, the facts are that the possible increase in plant capacity has been restricted by the Environment Ministry (MOE) because of the very small flow in the stream into which treated effluent is discharged. This is what Regional Chairman Eldred King was referring to in his statement to *The Tribune* on June 2 re: Sewage proposal duplication: King.

King was not privy to all the technical information available and in order to avoid misunderstanding in the general public it is hoped that this can be corrected with this letter.

CMS Group has proposed to upgrade the plants processes and facil-

ities so that Stouffville can have some growth potential, initially for some 3,000 people. This is not a "black box" attachment, but a re-design to meet all strict regulatory standards.

Under a very recent decision, after a \$4 million public hearing in a more difficult situation, the quasi-judicial body called the Environmental Assessment Board has now given approval to a CMS-proposed Rotordisk plant and tertiary treatment facility that will provide effluent meeting the very stringent provincial water quality standards. The effluent would

not degrade the stream. The MOE technical witnesses and the expert for the opposition both agreed that the system could meet these very high standards for treated waste water and recommended approval. Such stringent standards were beyond the reach of available technology. The targets CMS has set for itself are to have a positive environmental impact, to allow for planned growth to occur, and to be economical of both capital and operational costs. We believe these constraints can be met. This means that planning can be permitted without

sewage capacity being the major or sole constraint. We are certain that just as in the case now concluded, the MOE will be objective in evaluating

the proposal.

Jack Grant, Chairman
CMS Group Inc.

MARKHAM Sports

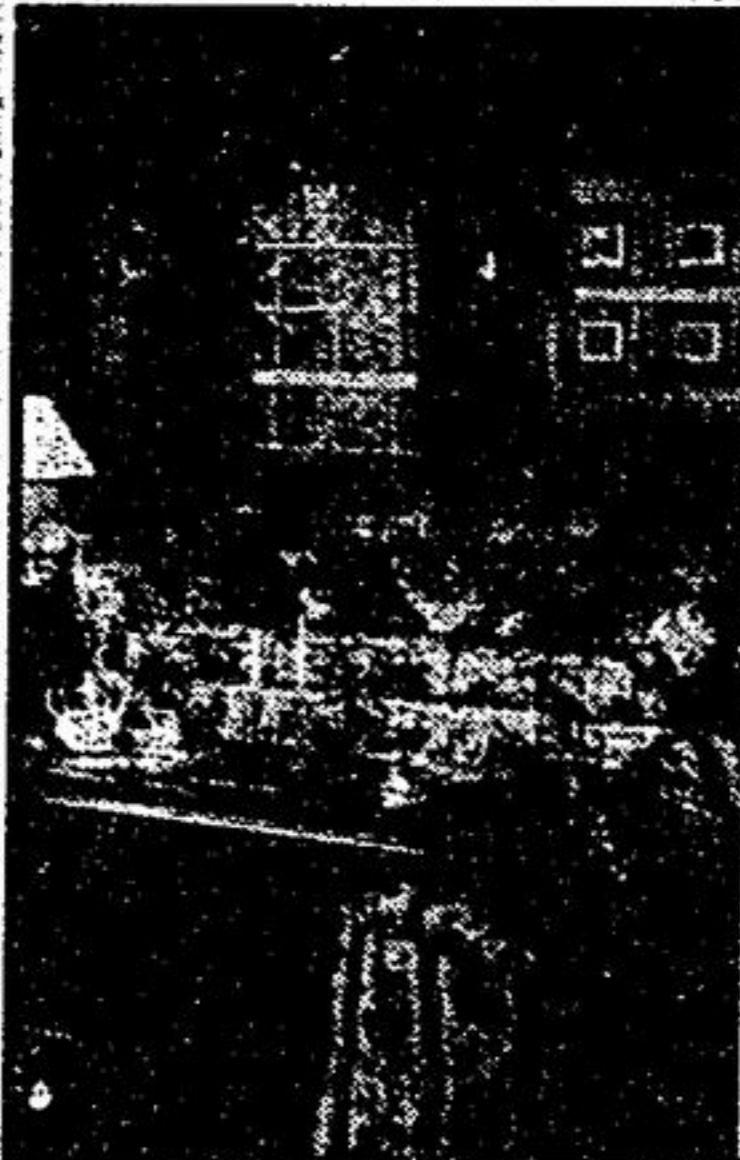
Congratulations To

Kevin Beckberger of Unionville. The 17 year old shot a hole-in-one on the 16th hole at the Cresthaven Golf Course recently.

IGA Markham Proud!

Hwy. 7 at Kennedy Rd.
Hwy. 7 at Galsworthy

There's a Didier's IGA store near you!



\$100* off Broadloom & Draperies

See our Large Selection

- Blinds • Flooring • Pictures
- Lamps • Wallpaper
- Accessories

FREE IN-HOME CONSULTATION

*minimum order \$500.

Unionville Broadloom & Interiors



4418 Highway #7 (2nd floor)
Unionville, Ont.
Hours: Mon-Wed 9-5;
Thurs 9-8; Fri-Sat 9-5
477-2700

Prismatic Decorating Centre

GREAT SAVINGS!

- All outside Paints & Stains
- Drop in & ask us about our "NEW" blocking system
- Great wallpaper selection

Free Estimates on quality custom painting & wallpapering.

475-7259

33 The Bridle Trail,
Unionville
Prismatic Decorating Centre



DI SIMONE TILE

UPGRADE YOUR FLOORS SHOP AT HOME SERVICE

- Ceramic Tile
- Marble
- Granite
- Floor and Wall Tile
- Little Maintenance

- Kitchen
- Hallways
- Basements
- Bathrooms
- Laundry Rooms
- Showers

CLEAN INSTALLATION

PERSONAL SERVICE/QUALITY WORKMANSHIP

DE SIMONE TILE specializes in ceramic, marble, granite tiles as well as linoleum flooring. For over 16 years DE SIMONE TILE has served customers anywhere from private homes to large developments. Because we are a small business, we can combine specialized home service with quality workmanship. Customers are able to choose from an array of samples to match any decor. We are committed to improving the value of your home. Give us a call!

FREE ESTIMATES

Call Alfredo Di Simone
471-6837

JUNE SALE

AT

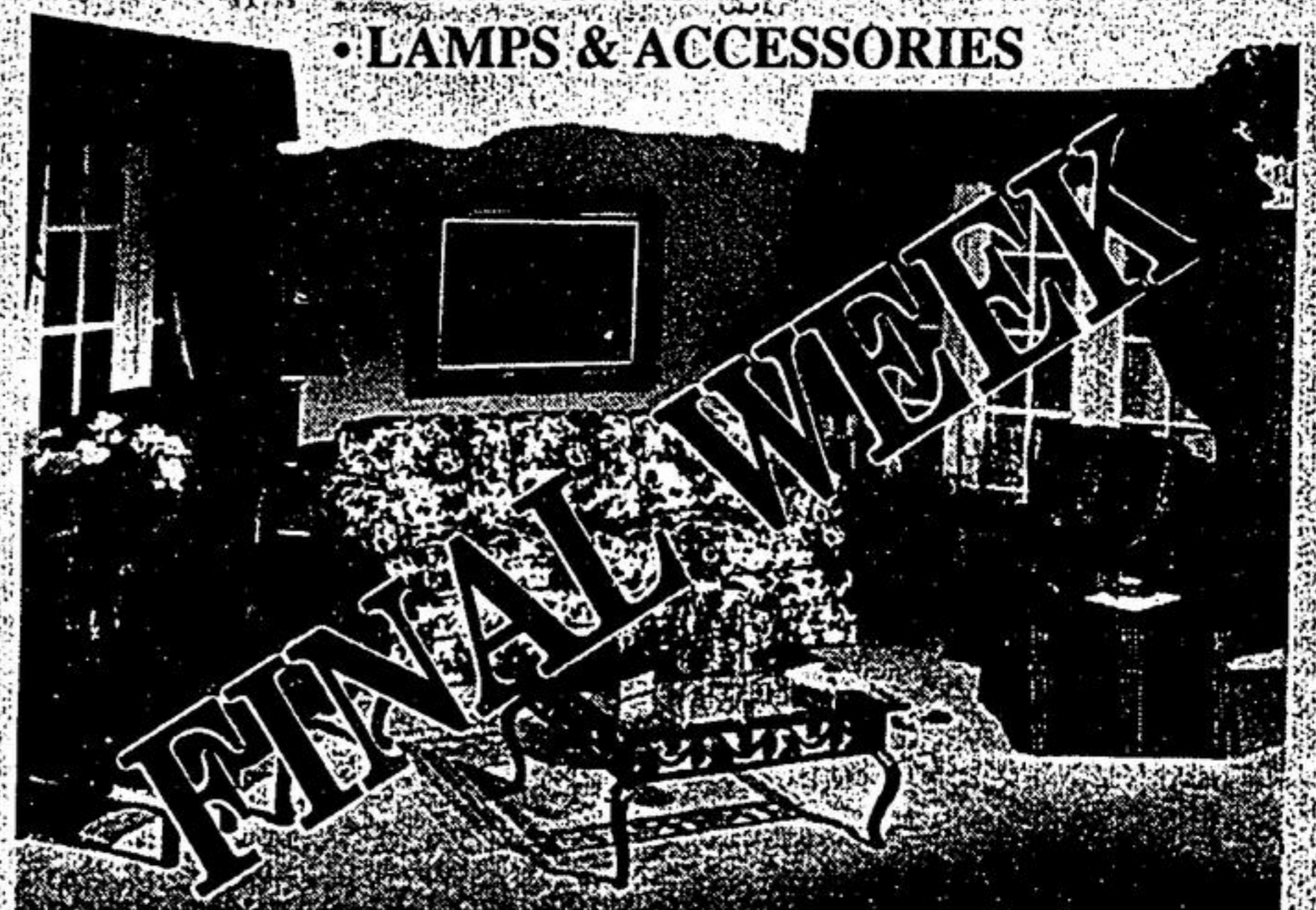
Designer's Touch

INTERIORS DESIGN

"The only complete Design Showroom" in York Region featuring:

- FURNITURE
- DRAPERIES, BLINDS & SHUTTERS
- CARPET AND FLOORING
- WALLPAPER
- LAMPS & ACCESSORIES

NEW



Factory Authorized Sale!

ALL LANE UPHOLSTERY AND FABRICS

The annual Lane® Gallery Factory-Authorized Sale makes it easy to create the room of your dreams with great savings on upholstery to suit any decorating plan. Our tremendous selection of styles, finishes and fabrics lets you visualize the possibilities and simplifies your shopping. But hurry! The event is for a limited time only.



340 CARLTON RD.
LONDON ONT.
6636



AREA'S LARGEST PRESENTATION OF LANE FURNITURE!

Bridle Post Mall - Kennedy Rd. & Carlton Rd.
2nd Level

479-3250

Now Open



- Batting Cages **GOLF** • Driving Range
- **Adventure Miniature Golf**

Stouffville's own

MYRTLE BEACH!!!

642-5174

