

Editor's Mail

# St. Mark's students express concerns on town issues

As part of their newspaper course, students at Stouffville's St. Mark's separate school had to write a letter to the editor. Here is a brief sampling of some their concerns.

Dear Editor,

I am concerned about the parks in Stouffville. The park on the corner of Millard and Hawthorne St. is in bad shape. The grass is not cut and sticks are falling off the trees on to the stones in the playground and there is a hole in the slide. I think that Stouffville should hire a teenager to take care of the parks. I will write to the mayor in two weeks if this is not done.

Melissa Benish.

Dear Editor,

I think that the Ninth line needs repairing. People are having accidents and getting seriously hurt. The ambulance has to go the long way to get to the hospital, since Ninth Line is too rough. If the patient is bleeding to death or having a heart attack they're obviously going to die before they get to the hospital. Some people are getting really ticked off because of it. The last time I went down Ninth line almost every 50 feet there was a sign saying "Rough Road" and I think it's a waste of money paying for the signs when you could be fixing the

road. Also, Main Street has too many lights. One day a plane is going to mistake it for a runway. The lights also waste a lot of electricity

Jennifer Davis

Dear Editor,

Hi, I would like to give you some advice. My class is doing a environment issue about pollution and garbage. We also

have to write a letter to an editor (you) for our newspaper unit. I also have to tell you something in Stouffville that I like or dislike. I dislike the roads to our school. Since it is a school shouldn't there be a sidewalk on the road so we could walk safely? I was wondering if the town could find a way to put some sidewalks in.

Gianna Santeramo

## Is your child ready for end-of-term examinations?

We offer a full range of pre-examination, comprehensive reviews and study strategies in all subjects for grades 9 to 13.

Individual and group instruction.

For more information, call us today!



5293 Highway #7, Suite 203  
Markham, Ontario L3P 1B8  
Telephone: 294-8757

# ADAMS GARDEN CENTRE

This Week's Specials...

PEAT MOSS \$5<sup>49</sup>  
4 cubic feet

GERANIUMS 99¢  
POT

MARIGOLDS, PANSIES, PETUNIAS 79¢  
BOX

HANGING BASKETS \$9<sup>99</sup>  
Your choice

OPEN 7 DAYS A WEEK 8am - 9pm  
ADAMS GARDEN CENTRE  
HWY #48 & Major MacKenzie Drive  
471-8318



# NO BULL PRICES!

## SAVE BIG AT MARKHAM JEEP EAGLE!

Here are real prices without any confusing "double-this" and "triple-that" and whatever. There aren't any hidden asterisks! Markham Jeep/Eagle isn't afraid to show you prices that are actual, full delivered prices, with rebates. And we don't sneak in any extra profits called things like "delivery fees" or "additional freight charges". No other bull. Compare our prices with the other guy's prices-if they'll let you. The real bottom line? — you'll save at Markham Jeep/Eagle! Stop in today and start saving bucks!



### 1993 SPORT 2 DR. 5 SPD. AIR

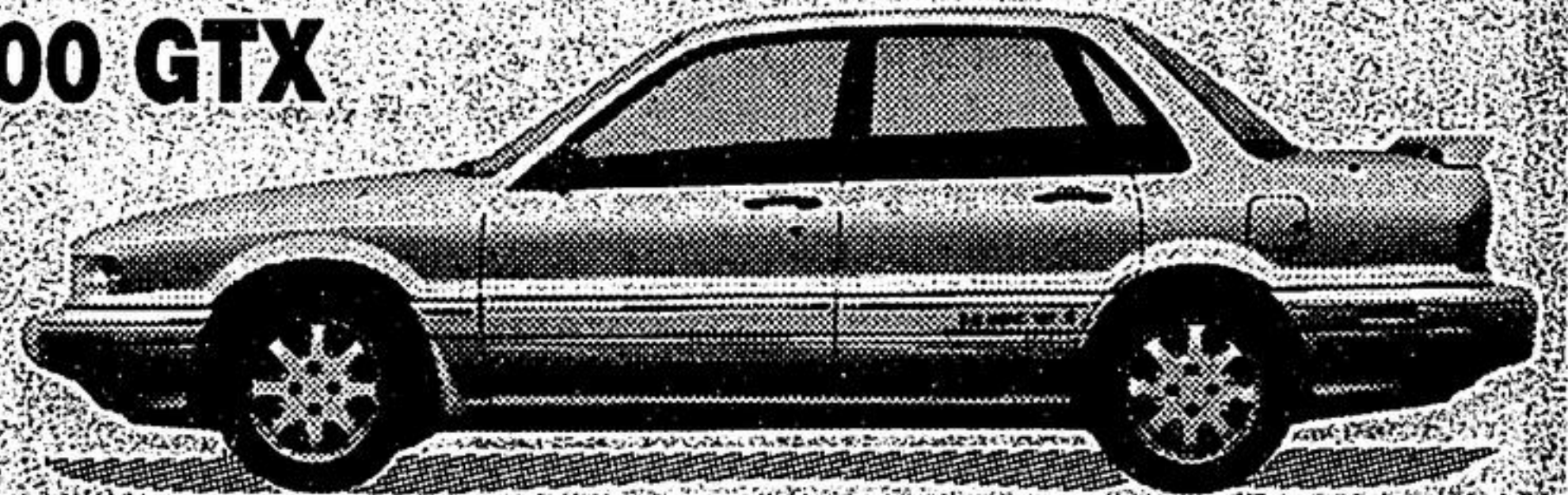
- Air conditioning, tilt steering, rear wiper/washer, leather wrapped steering wheel, centre console, roof rack, AM/FM cassette.
- Many standard features on this model include, 6 cylinder, 190 horsepower engine, 225/75/15 all terrain tires with white letters, cloth seating, tinted glass and much, much, more!



\$18,988 FULL DELIVERED PRICE!  
ADD TAXES & LICENSE

### 1993 EAGLE 2000 GTX

- Imagine an imported car with every luxury and sport option. You would include: 6 way drivers seat, air conditioning, rear seat heat ducts, cast alloy sportwheels, bridgestone performance radials, power windows, mirrors, door locks, steering, braking and antenna. Premium stereo with 6 speakers plus all those standard import car items. Now imagine the price tag.

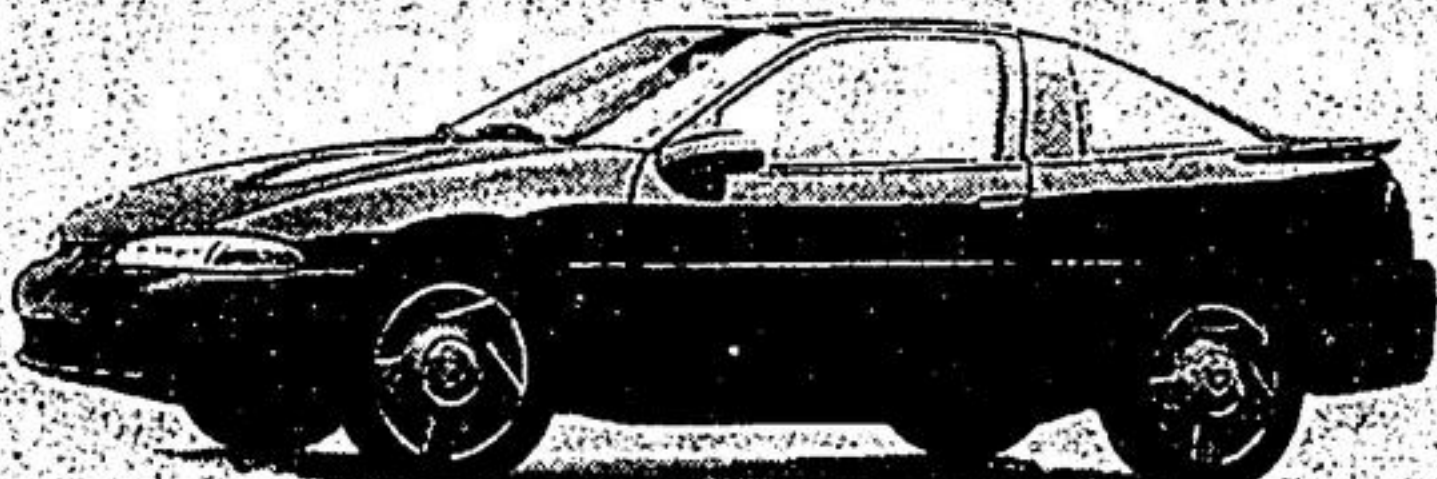


\$16,888 FULL DELIVERED PRICE!  
ADD TAXES & LICENSE

### 1993 EAGLE TALON AIR

- Air conditioning
- 5 speed manual
- AM/FM stereo cassette
- Dual remote control mirrors
- Power steering/brakes
- Speed control, rear wiper
- Stainless steel exhaust

See dealer for details.



### 1993 YJ 'S' 5 SPD.

- Power steering, hardtop, AM/FM cassette, alloy wheels, white lettered all terrain tires, full spare tire, 4 passenger seating, 2.5 ltr., 4 cylinder and more.

\$14,988 FULL DELIVERED PRICE!  
ADD TAXES & LICENSE



### 1992 TALON TSI AIR ABS

- 0-100 km in 6.3 seconds. Wow! Is this car fast? We don't recommend proving that no American - built production car (ZR-1 excepted) can keep up, but we know you'll enjoy the confidence this car inspires. New '92 bargain, absolutely loaded. Hurry!

\$19,988 FULL DELIVERED PRICE!  
ADD TAXES & LICENSE



# MARKHAM



347 MAIN ST. N.  
HWY. 48,  
MARKHAM  
471-4505

18th Ave.	19th Ave.
Hwy. 48	Hwy. 48
Hwy. 48	Hwy. 48
Hwy. 48	Hwy. 48