

# Stouffville doctors share 'working mom' identity

(From page 25)

everything."

An added bonus is that their

nannies grew up in the same

town in the Philippines. "They

met in the library and now they

spend a lot of time with each

other," said Pyselman.

In fact, Sara and Rachel

Peters and Rochelle and Brandon

Pyselman have become

"one big family," she added. "It's

nice for us, because we know

our kids are happy at home and

well cared for, and have friends

they can play with."

And having the support of a

colleague in the same situation

is invaluable, said Peters.

"The fact that we both have

young families at home and the

demands of being a working

mother are really hard for male

colleagues to identify with,"

Pyselman said.

"Most of them have wives who

are stay-at-home moms and

who look after all the children's

needs, so it's nice for us to be

able to relate to each other."

Added Peters, "I think we're

lucky that we've both got

incredibly supportive hus-

bands."

And although life's hectic at

times, she admitted, she and

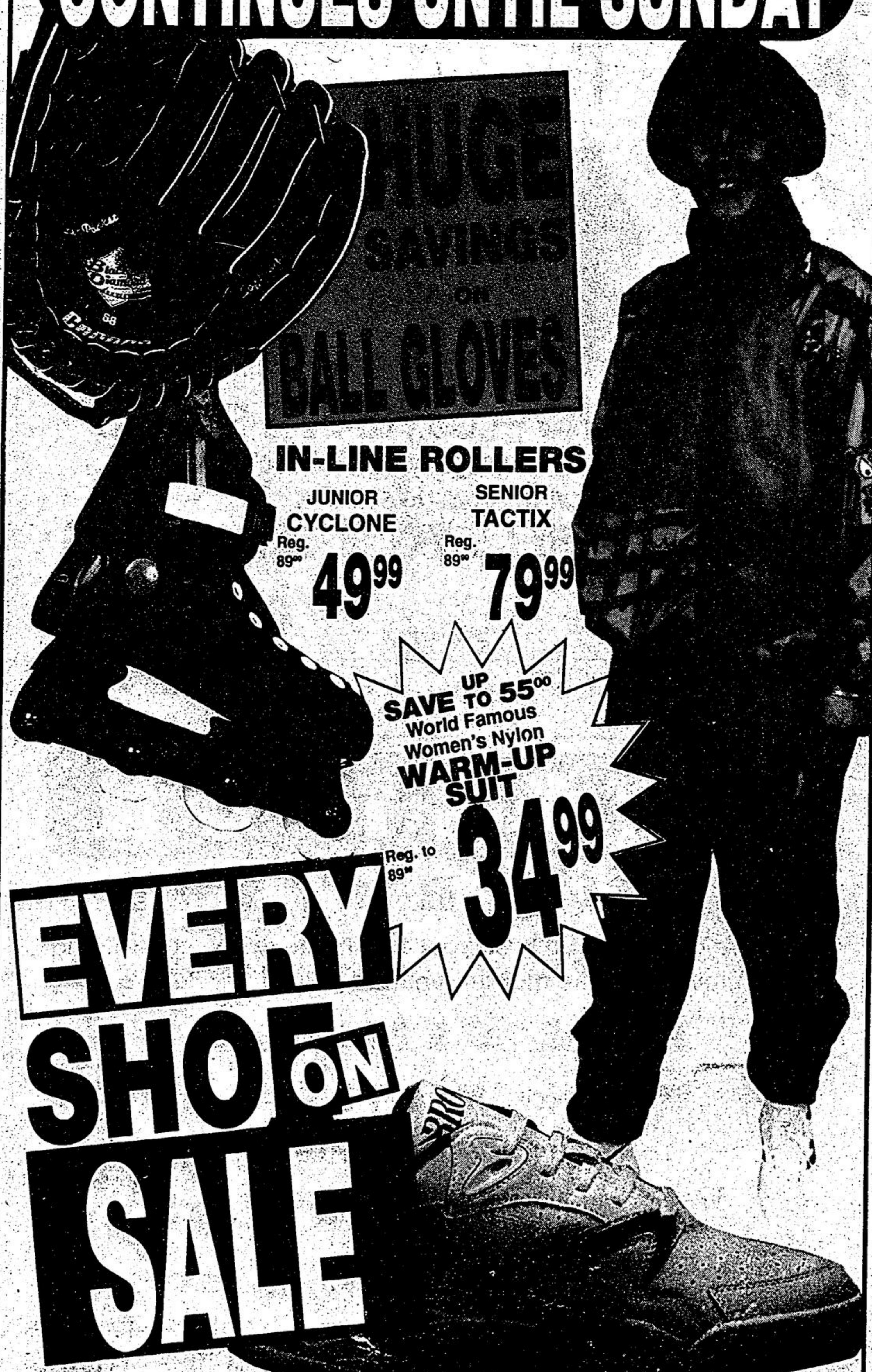
Pyselman find that the rewards

more than compensate for the

challenges.

# SPRING 40

## CONTINUES UNTIL SUNDAY



BALL GLOVES

IN-LINE ROLLERS

JUNIOR CYCLONE

Reg. 89<sup>99</sup> **49<sup>99</sup>**

SENIOR TACTIX

Reg. 89<sup>99</sup> **79<sup>99</sup>**

SAVE UP TO 55<sup>00</sup>  
World Famous  
Women's Nylon  
WARM-UP  
SUIT

Reg. to 89<sup>99</sup> **34<sup>99</sup>**

# EVERY SHOE ON SALE

# sports National

STOUFFVILLE CLEARANCE OUTLET  
LOTS OF FREE PARKING



SALE HOURS:  
FRIDAY, MAY 7  
9:00 A.M. - MIDNIGHT  
SATURDAY, MAY 8  
9:00 A.M. - 7:00 P.M.  
SUNDAY, MAY 9  
10:00 A.M. - 6:00 P.M.

## ST. RAPHAEL'S MANOR

"Affordable Retirement Living"

RATES FROM **\$900<sup>00</sup>** MONTHLY

- Spacious, air conditioned suites, private and shared
- Nursing, housekeeping, and laundry services
- Medical clinic, physiotherapist and nursing home on site

CONVALESCENT, VACATION & RESPITE CARE

For information call **Maureen McAlaster 499-3313**

1020 McNicoll Avenue at Victoria Park Ave. Scarborough, Ontario

## TOWN OF WHITCHURCH-STOUFFVILLE

### NOTICE 1993 TAXES

The Second Instalment of the 1993 Interim Realty Taxes are due on or before

**MAY 21, 1993**

Office Hours - Monday thru Friday  
8:30 a.m. to 4:30 p.m.

640-1900 895-2423  
19 Civic Ave., Box 419, Stouffville, Ontario L4A 7Z6  
After Hours - Mail Slot - East side of Building

Ruth Armstrong, A.M.C.T., C.M.T.C.  
Tax Collector & Revenue Supervisor

### SPRING YARD WASTE COLLECTION

The Town of Whitchurch-Stouffville will provide special collections of organic yard waste on the regularly scheduled waste collection days during the following weeks:

**Week of May 17th to 21st**  
**Week of June 21st to 25th**

Yard waste must be placed at the curb by 7:00 a.m. in **CLEAR PLASTIC BAGS** or tied in bundles having dimensions not greater than four feet long and one foot in diameter and weighing not more than fifty (50) pounds. Branches must not be more than six inches in diameter.

Organic yard wastes have been banned from the Keele Valley Landfill to help conserve its remaining capacity. Residents are requested to compost much of their yard waste or assist by taking measures to reduce the amount of yard waste.

Residents should not let their grass get too tall before cutting it. Grass clippings, less than one inch (25mm) long can be left on the lawn to fertilize the soil. In addition, grass and leaves can be mulched and placed around shrubs and plants to hold in moisture and deter weed growth.

Residents who have large quantities of yard waste or who do not wish to keep their yard waste until the next collection, may take this material to the York Region's Composting Facility. This facility is located on the south side of Bloomington Road, just west of Leslie Street and is open 8:00 a.m. to 4:00 p.m., Monday through Saturday, excluding statutory holidays.

For details on future yard waste collections, residents are requested to check their local newspapers for advertisements. For further information, please call the Public Works Department at 640-1900 or 895-2423.

EXPIRES MAY 9/93

