

McARTHUR FORD

Presents

"THE MAX"



THE MAX: 4 door, air cond., auto, power steering, power brakes, AM/FM stereo, two tone paint, aluminum wheels, rear deck rack, steel belted radials, interval wipers.

ONLY **\$168** PER MONTH*

ROADSIDE ASSISTANCE
with every Ford lease

McARTHUR'S
KENNEDY RD. JUST SOUTH OF 7
474-1350

Ford LEASING

Hwy. 7
McArthur Ford
Kennedy Rd.
N

*Based on 36 months, OAC, \$2500 down payment, plus first and security deposit. Excludes freight, license and all taxes. 75,000 kilometers allowed.



Photo LORI EMMERSON

Out for a stroll

Jennifer Lacey and Sarah Mickeler (right) were out for a stroll (or is it roll) in the spring sunshine in the park.



TRUCKLOAD SALE

FREE SAMPLES DAILY

PRICES EFFECTIVE TILL MAY 15/93

M&M Deluxe Trim Diana Rib & Chicken Sauce - 500 ml. \$2.69

Canadian Pork Back Ribs 13.99 3 lb. box
A BBQ favourite.

M&M Product of British Columbia Lemon & Dill Sauce - 10 g pkg. \$1.39

Salmon Steaks 1.69 each
Vacuum packed. Minimum 5 oz. portion. Sold individually.

M&M Our #1 Selling Burger Zucchini Relish 500 ml. \$2.89

Tasty Burgers 8.99 4 lb. box
Produced exclusively for M&M Meat Shops by J.M. Schneider. 20 x 3.2 oz. beef burgers.

M&M Roadhouse Style Diana Hot BBQ Sauce 500 ml. \$2.69

Chicken Wings 9.99 4 lb. box
Tips removed. Uncooked. Ready to spice the way you like.

M&M Microwave or Oven Ready

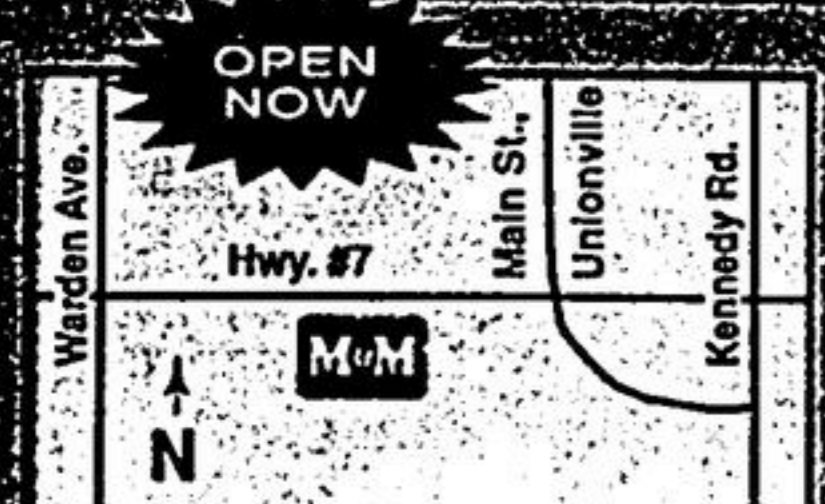
Chicken Italiano 2.99 each
Chicken Cordon Swiss 2.99 each
Sold individually, 6 oz. portion

FRIGIDAIRE Win One of 120, 7.2 cu. ft. FRIGIDAIRE chest freezers. (1 freezer per store) Contest closes May 29, 1993. See complete contest details at your store.

M&M Quality

Big Red Wieners 12.99 2 kg.
Large 6-1/2 inch size. 36 wieners. Produced by J.M. Schneider.

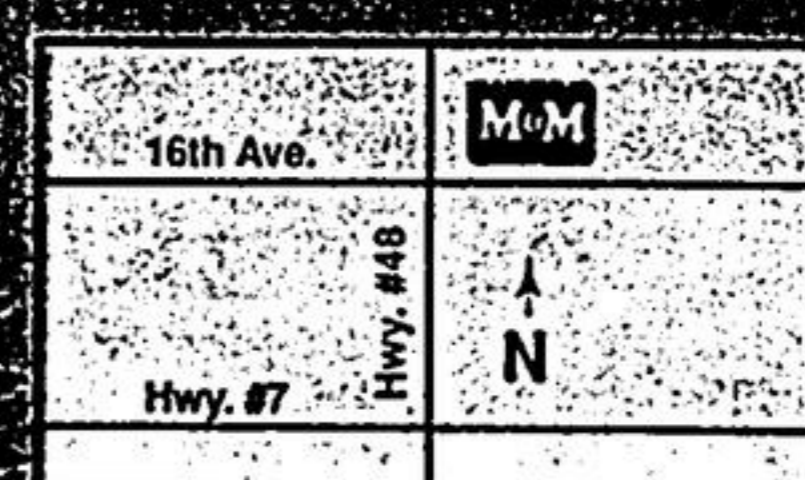
So Good To Come Home To.



SENIORS DAY EVERY TUESDAY

STORE HOURS:
SUNDAYS 10 a.m. - 6 p.m.
MONDAY - WEDNESDAY 9 a.m. - 8 p.m.
THURSDAY & FRIDAY 9 a.m. - 9 p.m.
SATURDAY 9 a.m. - 6 p.m.

OPEN 7 DAYS A WEEK



Bell wants to cut charges

Bell Canada wants to implement a \$140-million plan to eliminate a large percentage of long distance charges for Stouffville and area citizens, council was told this week.

Bell representative Gordon Jackson asked officials to support the Community Calling Plan (CCP) proposal, which will eliminate long distance chargers when calling as far away as Burlington and Oshawa. Jackson told council the CCP, expected to be on-line by 1994 if the Canadian Radio and Television Commission CRTC approves it, will be extremely "advantageous for citizens and businesses" because it broadens the areas in which they can call without paying long distance charges.

Jackson said the proposal is a "customer driven plan" which stems from complaints that callers are paying high fees to phone a neighboring municipality, but not these same high fees to call Toronto.

Jackson said Stouffvillites can call 1.7 million telephone lines without paying long distance now, but the new plan will add another 900,000 lines.

"With the new CCP callers can call 2.6 million telephone lines - this will be the largest toll free system in North America," Jackson said. He said Bell has monitored calls to and from various areas on a monthly basis before deciding which areas to include in the plan. The (CRTC) is being asked to approve the plan and a hearing is scheduled May 17. Jackson said Whitchurch-Stouffville's average telephone bill of about \$57.28 will decrease to \$55.72 or a 2.7 per cent decrease, once CCP is in place.