

## Lemonville Art Group hosting one-day workshop

The Lemonville Art Group is hosting a one-day workshop with Isabelle Van Zant, noted Newmarket artist on April 29 from 10 a.m. to 3 p.m. Instruction will be on aspects of portraiture and costs \$10. Classes will be held

at Lemonville Community Centre, located on the east side of McCowan Rd. and south of Bloomington Sdrd. For information, call Eileen at 640-3437 or Stella at 642-3407.

**It's Earth Day!**

See our annual report on the environment in today's Tribune.

# The Tribune *Stouffville*

**ECONO  
TAXI  
640-5466**

Vol. 105 No. 16 A Metroland Community Newspaper

Wednesday, April 21, 1993

24 Pages

50 cents

## Budget

# Stouffville passes largest tax hike in area

TRACY KIBBLE  
Staff Reporter

Whitchurch-Stouffville last week passed the largest municipal tax hike, to date, of all nine area municipalities in York Region - an increase officials say is desperately needed to repair broken roads.

Newmarket, Aurora, Vaughan and Richmond Hill each passed zero-percentage-increase budgets this year, several of which boast its second zero budget in a row.

While Markham won't ratify its budget until the end of the month, officials there are aiming at keeping taxes at 1992's level, reports show.

King Township, which also won't ratify its 1993 budget until July, is looking hard at keeping taxes at 1992 levels, reports show.

Georgina council approved a 2.3 per

cent hike this year - an increase officials maintain is necessary to offset ongoing bills and studies related to the town's landfill fight with Queen's Park. East Gwillimbury passed a 1.3 per cent tax increase which officials are blaming on a low ratio of commercial property to generate revenue.

East Gwillimbury councillors have said the 1.3 per cent increase is in line with the current rate of inflation and is necessary in order to maintain the same level of service residents have become accustomed to.

Stouffville officials, in a 5-2 recorded vote April 6, approved a three per cent municipal tax increase during a raucous and eruptive meeting, and are expected to present the full details during a press conference today.

The three per cent hike means an additional \$15.20 on the municipal por-

tion of this year's tax bill - or a four-cent-a-day increase from 1991 and 1992.

The town's 4,500 ratepayers will share the expense to help raise about

\$135,000 in municipal revenue (the town generates about \$45,000 revenue for each percentage point it raises taxes) hiking the average Stouffville tax bill from \$506.44 to \$521.63 a year.

## Budget expected to be released at town press conference today

Mayor Fran Sainsbury is expected to release the details of the town's 1993 budget at the press conference today.

While majority council approved a three-per-cent hike April 6 (in a 5-2 recorded vote,) a budget breakdown was not made available.

Officials approved a one-per-cent hike for "general expenses" first, then an additional two per cent for roads.

The hike was desperately needed to repair many kilometres of broken roadways in a municipality dominated by unpaved, rural roads, officials have said.

Officials added the increase adds up to a four-cent-a-day increase for the town's 4,500 ratepayers, raising \$135,000 revenue - \$90,000 for roads.

## Residents concerned over 9th Line study

JUDY PHILLIPS  
Correspondent

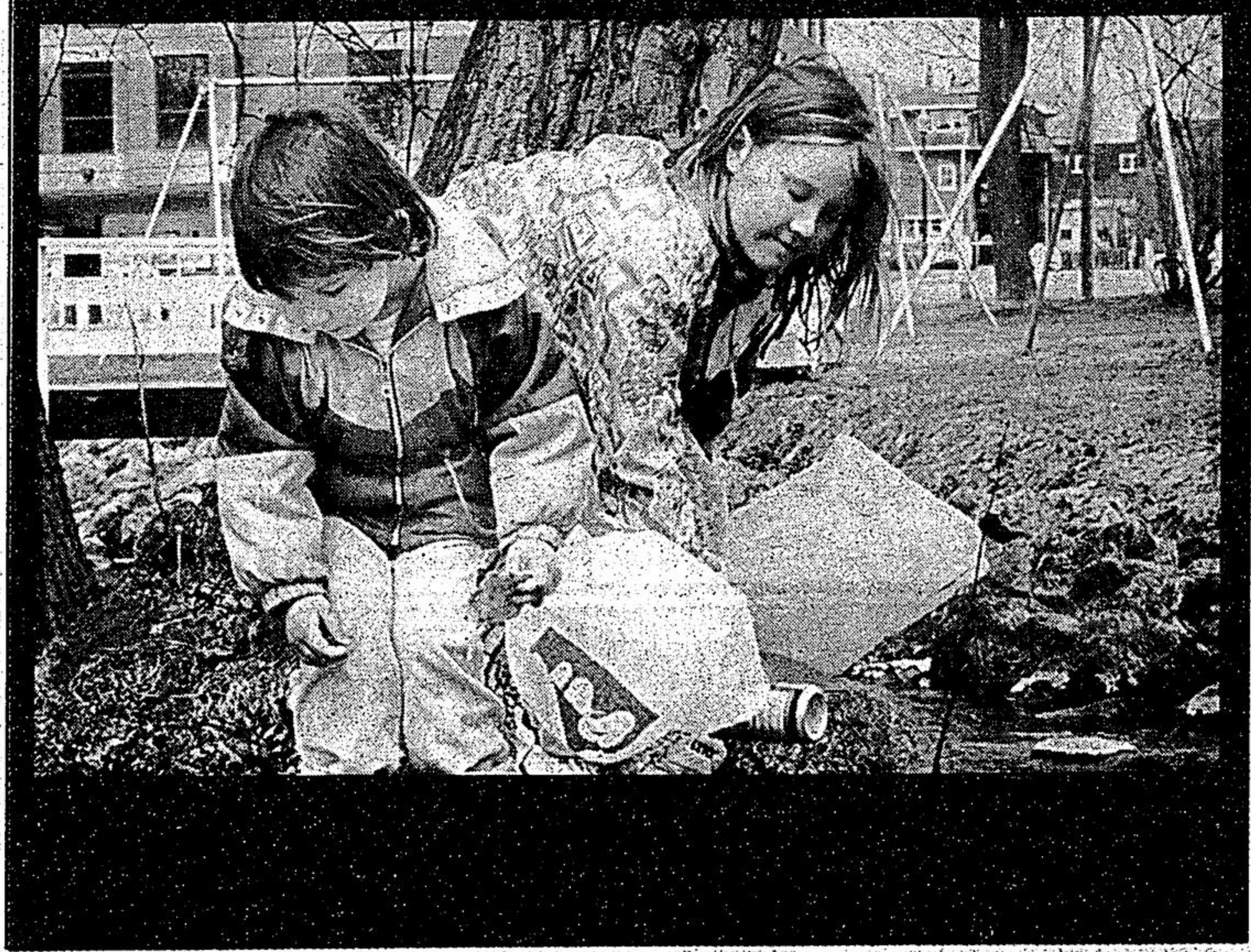
Many Stouffville residents are concerned a plan to build homes in larger Markham will jeopardize safe access to Markham-Stouffville Hospital.

The planners of the Ninth Line Study for Markham East were looking for community

reaction to their latest plan. And that's exactly what they got.

Last Wednesday evening Andres Duany, the urban planner hired by the Town of Markham, presented the Draft Master Plan to a crowd of about 400. The area is located

(Please see Page 3)



## Camp gets facelift

Shadow Lake Camp is going to get a facelift. In May, thousands of volunteers will gather to repair and build new structures at the Stouffville-area camp for people with developmental disabilities.

The Sterling Community Service Foundation has chosen Shadow Lake for this year's International Community Service Day project. The camp, built in the 1920s will be renovated on May 8 and 9, with such projects as building 30 picnic tables, repairing five non-winterized cabins, widening narrow pathways, and repairs to a recreation hall, farm house, crafts area, workshop, and a new floor for the basketball court. For more information on the project, call 367-4232.

BOYD'S SOURCE FOR SPORTS

BOYD'S SOURCE FOR SPORTS

BOYD'S SOURCE FOR SPORTS

**SPRING  
TRAINING  
SALE EVENT**

**IS NOW IN  
FULL SWING  
AT**

**BOYD'S SOURCE FOR SPORTS**

FARMER JACK'S PLAZA IN STOUFFVILLE 640-6657



*Go with the Pros!*  
...At The SOURCE!

Darryl Sittler  
"Hall of Famer"  
Advisor  
to the  
Source

**OPEN**  
Sun. & Mon. Closed  
Tues. - Wed.  
10 a.m. - 6 p.m.  
Thurs. & Fri.  
10 a.m. - 8 p.m.  
Sat. 9 a.m. - 4 p.m.