

**Trivia**

# What happened to Pearson Cup?

**Q. Whatever happened to the Pearson Cup which was awarded to the winner of exhibition games between the Montreal Expos and the Toronto Blue Jays?**

**A.** The Pearson Cup, named after former prime minister Lester Pearson, an avid baseball fan, was established in 1978 to generate interest for games between the Jays and the Expos. Each year, the teams would play an exhibi-

tion game to determine the cup winner.

Although attendance for the games hovered around the 20,000 mark, the annual match was stopped in the early 80s partly because of lack of interest by fans and players alike.

A spokesperson for the Canadian Baseball Hall of Fame says the cup is one of the artifacts in the hall's archives awaiting a new home.

A location for the hall has not been determined yet.

He said that with recent talk about inter-league play in baseball, it's still possible the Pearson Cup could be resurrected.

Perhaps if the Expos end up playing the Jays in real, rather than exhibition games as in the past, the cup might be used as a way of acknowledging the winner of those matches each year.

**Answers**

SCATTY	SEW	HUTCH
SURPRISE	LAHR	FATHER
CRUSADER	ERIE	USHERS
OGEES	ROSSETTI	RHETT
WELSH	STEPHENS	ERA
	SLEET	TEARS
SPIFFY	WHEY	RYA
ELUSIONS	SHOPSAT	BORE
SALTBOXES	SUR	SCHAFFER
AIL	TEXAS	NOB
UNAPT	SEMI	GOLD
	TRAT	SAD
STOICAL	RIP	SCRAPPERS
ARUM	MANANAS	SENHORES
MITE	PSI	GLIB
SOO	JACK	GRAIN
FOE	HIP	BONES
PADRE	TUR	MERIC
CAHIER	ANOVA	ANGSTROM
PLASMA	SCAR	NUPTIALS
HETTYS	HDS	TOASTS

## ONE HOUR OF YOUR TIME COULD BE WORTH THOUSANDS OF DOLLARS.

Attending a Templeton Global seminar could provide you with information worth thousands of dollars when you retire. For example, you'll discover how to substantially increase the maximum allowable portion of your RRSP funds invested outside Canada...thus increasing the potential return on your assets while reducing risk through diversification. Plan to attend - it could be your best investment decision of the year!

- No fee or obligation
- Expert answers to your Global questions
- Space is limited - call now to ensure attendance



Our Speaker will be

Mr. Peter Cowie, Director of Research of Templeton Canada.

Tuesday April 20, 1993 - 7:00 p.m. to 8:15 p.m.

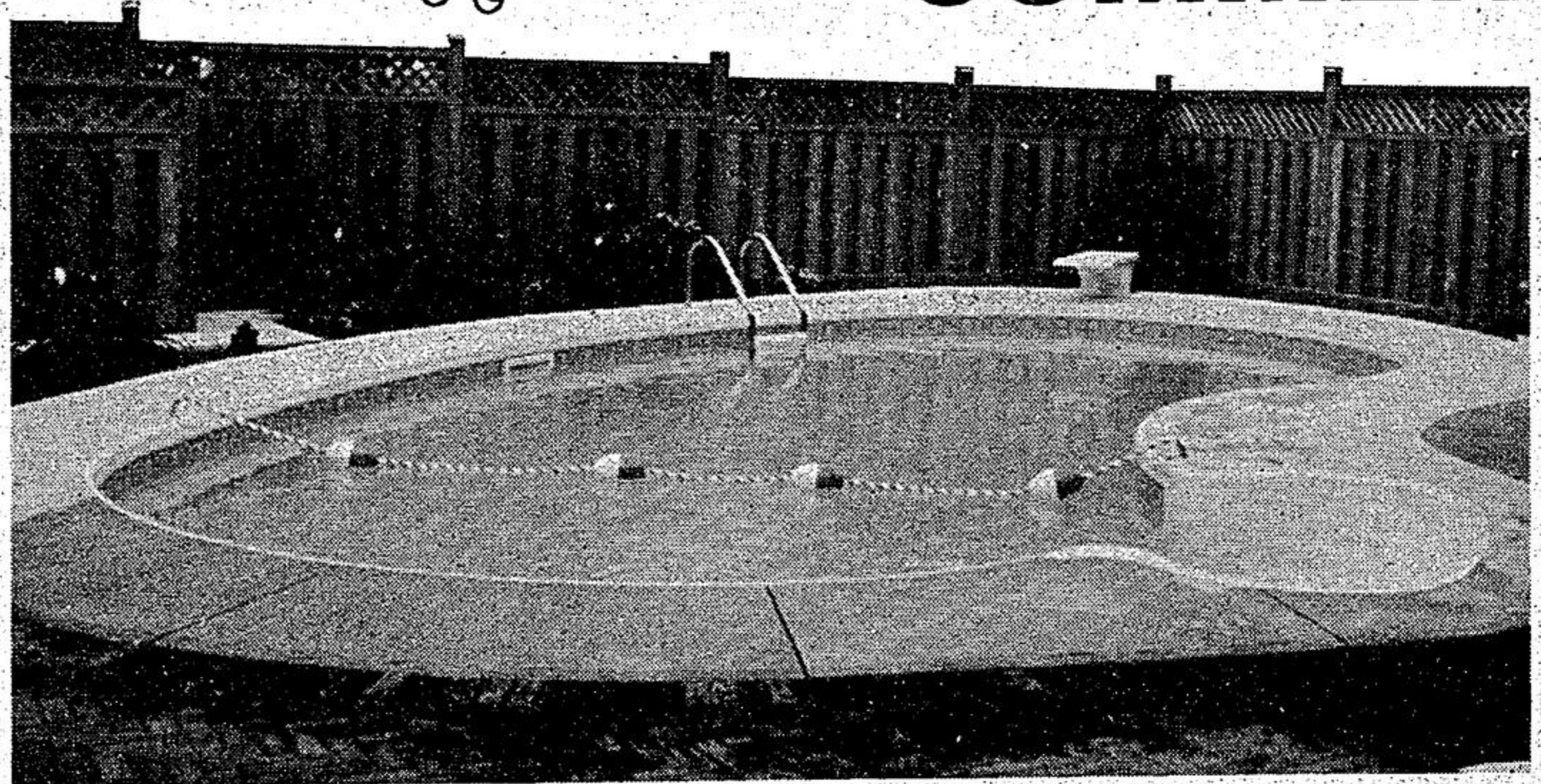
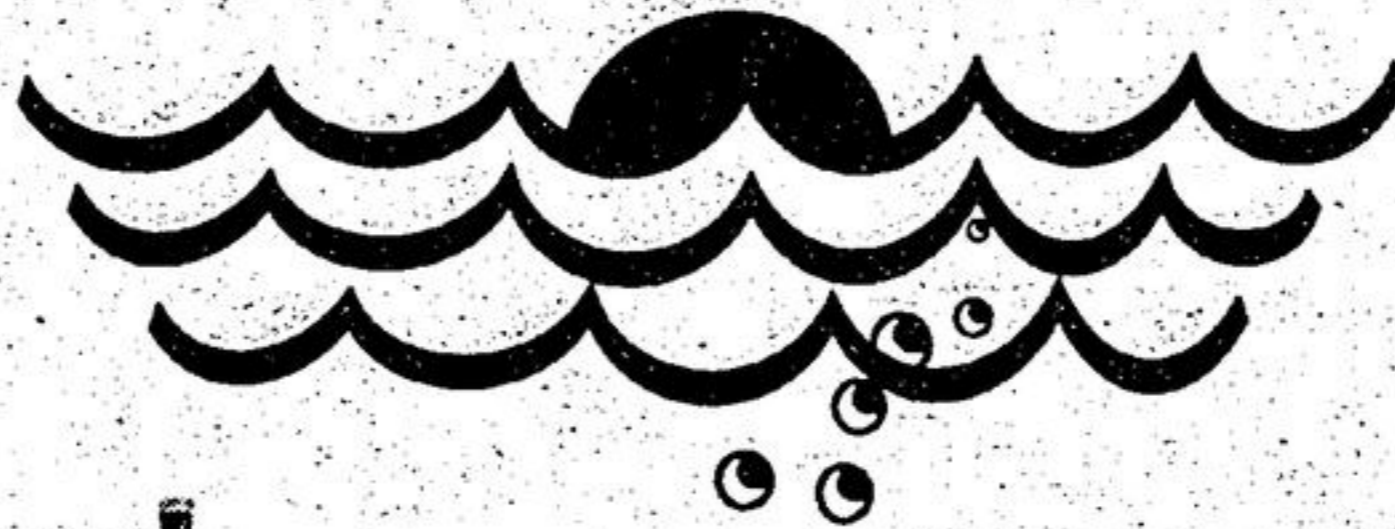
Radisson Don Valley, at the Don Valley Parkway and Eglinton

Call: John Scott or James Seyers  
North Toronto or Scarborough  
226-7402 or 296-2631



Important information about Templeton funds is contained in their respective simplified prospectuses. Obtain a copy from the above dealer or from Templeton Management Limited and read it carefully before investing. Unit values and rates of investment return will fluctuate.

## Rosswill Pools



INVITES YOU TO

# DIVE INTO SUMMER

INCLUDES: 22" FILTER 1 H.P. PUMP, 3' CONCRETE DECK, CHLORINATOR, CLEANING EQUIPMENT, 3 STEP LADDER AND CHEMICAL START UP

14' x 28' Pool **\$12,500<sup>00</sup>** Incl. GST\*

16' x 32' Pool **\$14,000<sup>00</sup>** Incl. GST\*

**THIS WEEKS SPECIAL FREE KREEPY KRAULY WITH POOL PURCHASE**

FINANCING AVAILABLE

CALL TODAY

**470-8026**

\*Based on easy access



WATER SAFETY PROGRAMME

**\$10 BRING IN \$10 THIS COUPON**  
AND RECEIVE \$10 OFF YOUR NEXT CAR RENTAL & FREE UPGRADES or UNLIMITED KILOMETERS AT OUR NEW HERTZ LOCATION IN THE SHERATON PARKWAY HOTEL AT LESLIE & HWY #7  
CALL 771-9053  
Expires May 31 Some Conditions Apply. Not valid at any other location or in conjunction with any other discount  
**\$10 Hertz \$10**

A BEAUTIFUL GARDEN IS ONE OF LIFE'S GREAT PLEASURES.



That's why Parklane has been part of Ontario's finest homes for two generations. Our expert landscape design and construction team works closely with our clients to create unique gardens that compliment and harmonize with their natural environment.

We're pleased to announce the 1993 opening of our Model Gardens & Landscape Design Center. Open to the public Mon. - Fri. 10 a.m. - 6 p.m., Sat., Sun. & Holidays 11 a.m. - 5 p.m.

Come tour our gardens and consult with our landscape architects.

Come be inspired at Parklane!

**PARKLANE MODEL GARDENS**  
model gardens, garden tours, professional consultation, product information and displays, nursery, seminars and workshops.  
On Stouffville Road, 1/2 mile East of Highway 404. **416-887-5851**

**PARKLANE**  
Creating fine residential gardens for over three decades.