

## Editor's Mail

# Deceptive political grandstanding over budget was 'sickening'

Dear Editor,  
Enraged by the contrived theatrics surrounding last week's budget presentation, I wish to pen a few points to set the record straight.

Several months of staff meetings, open to council enquiry and following a set schedule received by each member of council, preceded the first copy of the draft budget.

All members of council were given the draft budget one week before our budget-day meeting.

This allowed ample time before the meeting to peruse the document and to attend the meeting, organized and ready to suggest alternatives to any items in the draft budget.

On March 29, after more than seven hours of concerted deliberation, a majority of council voted for a one per cent increase in taxes. As always, not everyone agreed on all items, but a decisive majority was satisfied.

A week later, in front of the cameras, it was fascinating how the tune had changed.

As if no process had even been followed, one member of council thundered rhetoric that the budget book hadn't even been opened, and he'd like to "start again at page one."

Frankly, this kind of deceptive political grandstanding is sickening. But it's no longer even slightly surprising.

And though they make great headlines, I hope that it is evident that calculated statements like these are invariably at the expense of the rest of council.

Far from being a one-man show, the budget takes months of input from your town's entire council and staff.

We all worked hard to bring in a budget that reflects the needs expressed across Whitchurch-Stouffville. A bud-

get that is in our town's long-term interest.

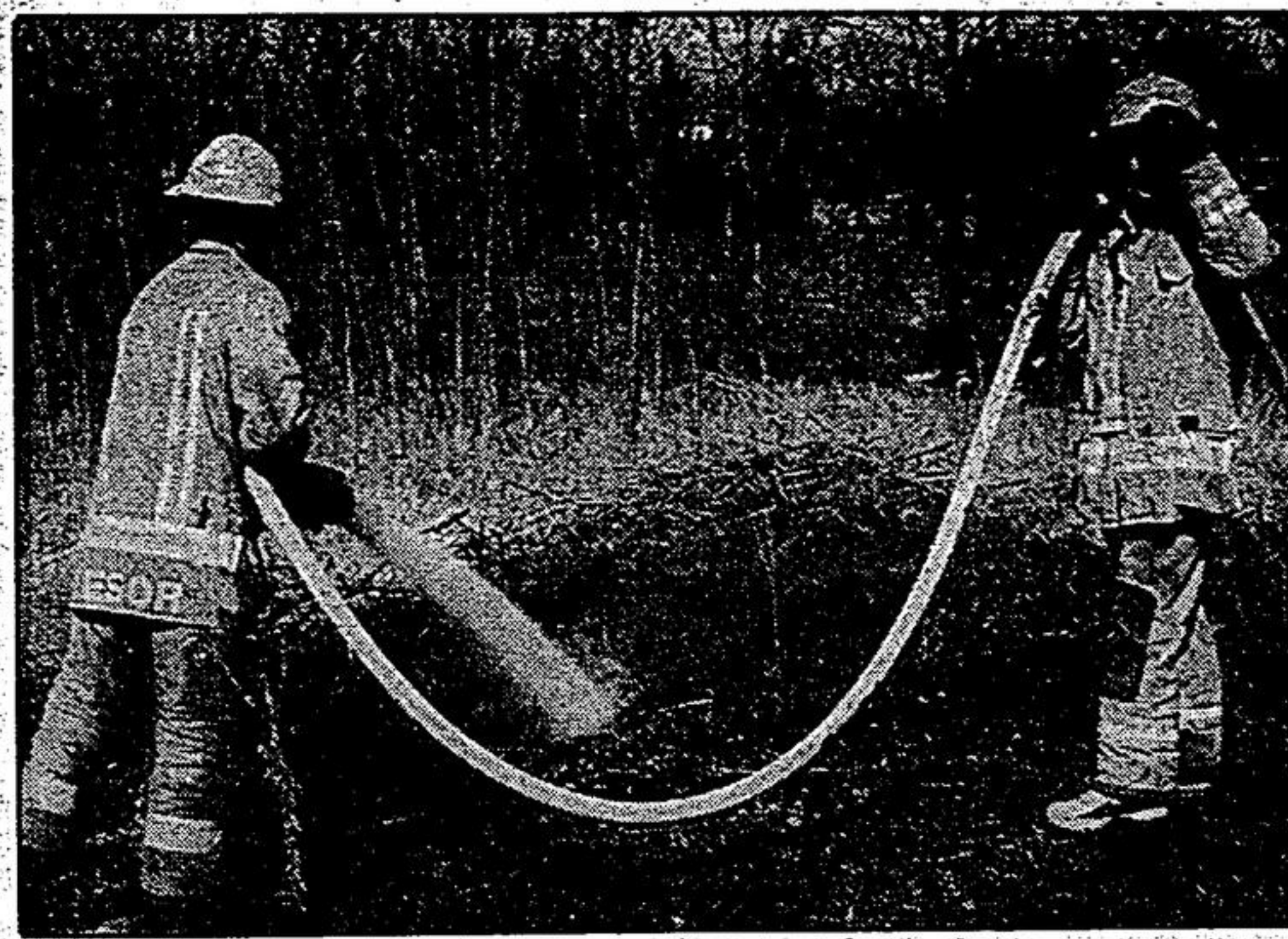
And rest assured that though the tax rate for this year has been dealt with, we're not finished cost-cutting yet.

Stephen Bellerby  
Ward 2 councillor and  
1992 finance chairman

## Stouffville grass fire extinguished

Stouffville firefighters douse water on a grass fire which had started in the lot behind Masterfeeds, just off Main and Edward Streets, Wednesday afternoon. The blaze was quickly extinguished by firefighters.

PHOTO/JUDY PHILLIPS



14th Annual

## Antique SHOW & SALE

RICHMOND GREEN

1300 Elgin Mills E., RICHMOND HILL  
Between Bayview Ave. & Leslie (N. of Major Mackenzie Dr.)

SAT. & SUN., APRIL 17 & 18, 10 am - 5 pm

110 SELECTED DEALERS Admission \$3.50  
Sponsored by Family Services Volunteers

## Kenneth Brown Investment Services

Brokers of  
GICs, RRSPs, RIFs AND ANNUITIES  
BEST GIC RATES  
NO FEES

7.500%  
5 YEARS

6.750%  
3 YEARS

CALLABLE  
CERTIFICATES  
5.250%

5.875%  
1 YEAR

5.050%  
90 days  
Minimum \$5,000

Come in today and have your tax return prepared  
by professional tax consultants.

1 Raymerville Drive, Markham 472-5949

Richmond Hill  
884-5563



Kleinburg  
893-0043

RATES SUBJECT TO CHANGE



## AT LAST A PRIVATE ISLAND THAT'S AFFORDABLE

While you may spend a lot of time attempting to par this hole, you won't spend a lot of money to play it. At Spring Lakes Golf and Country Club we have 53 other affordable holes to experience, all designed to challenge your golfing skills, but not your budget. Spring Lakes offers everything you would expect from an excellent private club and more, three championship courses, practice facilities, full club house amenities, special events, social activities, and a fully-stocked Pro Shop.

There is one thing about a Spring Lakes Membership you wouldn't expect... "IT'S AFFORDABLE."

FOR MORE INFORMATION CALL  
SPRING LAKES GOLF AND COUNTRY CLUB:  
(416) 640-2266

20 MINUTES FROM HIGHWAYS 401 & 404  
ON STOUFFVILLE ROAD & HIGHWAY 48



## INCOME TAX RETURNS

(416) 640-1769  
640-1778

GEORGE W. BRODIE  
Certified General Accountant

6138 MAIN ST. W.  
STOUFFVILLE, ONT.

## KEIRSTEAD FAMILY OF ARTISTS

an exhibition and sale of

ORIGINAL OILS AND WATERCOLOURS  
by Mitch, Colebrook, Shon and Pie

April 16th to May 2nd

Opening Friday, April 16th

## THE MENGER GALLERY

2243 Stouffville Rd., Between Hwy. 404 & Woodbine Ave.  
P.O. Box 159, Gormley, Ontario, L0H 1G0

Tues.-Fri. 10 a.m.-9 p.m.  
Closed Monday

(416) 887-5795

Sat. 10 a.m.-5 p.m.  
Sun. 1 p.m.-5 p.m.

## Music Mania fun

(From page 2)

when I was head of costumes one year. It was the day before the dress rehearsal and there were costumes hanging all over the house. I was getting ready to take them over to the high school when something on the stove caught fire.

"I was in a panic. There were 120 costumes, and I wasn't worried about what might happen to the house, just the costumes. Luckily, there wasn't any damage to the costumes or the house."

As for what keeps her coming back for more every year, Murphy said it was the people involved with the show. "I like the association with all the people."

She also feels that an involvement with Music Mania is a good outlet for creativity.

"I like the creative aspect of the show, I like to visualize special things in the technical end of it. And directing was good, you get to really use your creative juices until they run out. Then you let someone else take over."

## INSURANCE ACCORDING TO RUTH



Ruth Armstrong  
Broker

COLLEY, BORLAND & VALE INSURANCE BROKERS LIMITED  
642-0651