

Winners drawn

Winners in the Stouffville Lions Club elimination draw were front row from left, Nora Dowsett and husband Kerry Keller (\$1,500) and Chantal Carter (\$500), presented with their cheques recently by

from left, Dale St. John, district governor, Glen Peart, 1st vice president of Stouffville Lions Club, Tom Winters, past regional chairman and Bill Hodges, president of the Stouffville Lions Club.



AVECO POOL SERVICES LTD.
61 Sandiford Dr., Unit 8
Stouffville

COMPETITIVE PRICES ON POOL OPENINGS
THE COMPLETE POOL SERVICE

- Openings
- Closings
- Weekly Service
- Renovations
- Leak Detection
- Vinyl Liner Replacements
- Equipment Replacements & Repairs

Call Glenn Avery at 640-2666
(Over 20 years experience)

DO YOU NEED ADVICE ON PERSONAL BANKRUPTCY?

Personal bankruptcy can be a trying experience, but you don't have to face it alone. To discuss your financial situation in confidence, contact

MURRAY H. KIDECKEL
Trustee in Bankruptcy
(416) 882-2436
FIRST CONSULTATION FREE

DON VALLEY NORTH LEXUS - TOYOTA ATHLETE OF THE WEEK



ANA CUKIC

Ana Cukic earned 2nd place honours in duet, and 7th in figures and solo at the Eastern Canadian Divisional Championships for synchronized swimming in Winnipeg.

DON VALLEY NORTH LEXUS - TOYOTA
3120 Steeles Ave. E.
East of the 404 (Pkwy.) **475-0722**



MARKHAM THUNDER "AA" "A" "B" 1993/94 SPRING TRYOUTS

Minor Novice "AA" Centennial	April 12	6:00 pm	Coach Peter Vicary 294-5327	Minor Pee Wee "A" Mt. Joy	April 18	1:00 pm
Minor Novice "A" Mt. Joy	April 18	9:00 am		Pee Wee "AA" Mt. Joy	April 12	8:00 pm
Novice "AA" Mt. Joy	April 12	6:00 pm	Coach Brian Wilson 294-3073	Pee Wee "A" Mt. Joy	April 18	6:00 pm
Novice "A" Mt. Joy	April 18	10:00 am		Minor Bantam "AA" Centennial	April 12	9:00 pm
Novice "B" Centennial	April 29	6:00 pm		Minor Bantam "A" Mt. Joy	April 18	7:00 pm
Minor Atom "AA" Centennial	April 12	7:00 pm	Coach Tom Edward 477-6200	Bantam "AA" Centennial	April 27	10:00 pm
Minor Atom "A" Mt. Joy	April 18	11:00 am		Bantam "A" Centennial	TRYOUTS SEPT. 1993	
Atom "AA" Mt. Joy	April 12	7:00 pm	Coach Doug Carter 513-0292	Bantam "B" Centennial	TRYOUTS SEPT. 1993	
Atom "A" Mt. Joy	April 18	12:00 pm		Midget "AA" Centennial	Gary Reay-Laidler 291-4806	
Atom "B" Centennial	April 27	6:00 pm		Midget "A" Centennial	April 26	10:00 pm
Minor Pee Wee "AA" Centennial	April 12	8:00 pm	Coach Stephen Greene 479-5243	Midget "B" Centennial	TRYOUTS SEPT. 1993	

COST - \$6.00 per hour
\$9.00 per 1-1/2 hours



KIDS
EAT FREE

EASTER BRUNCH SPECIAL

11:00 a.m. - 3:00 p.m.

Hop on down to Pete & Marty's in Richmond Hill for Easter Brunch.

Adults \$8.99

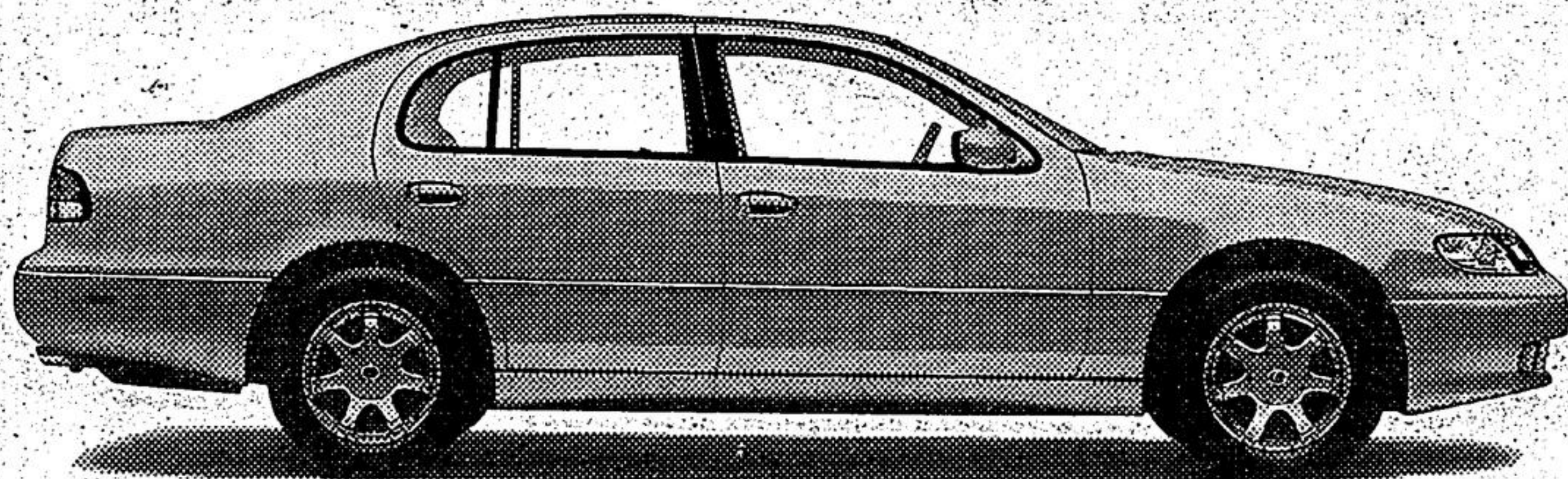
Kids 99¢ unless

accompanied by one adult buffet children eat FREE.

Phone for reservations for parties of ten or more - 881-0151
125 York Blvd., Richmond Hill



Room Enough For The Kids. Including The One Within Yourself.



Presenting The New Lexus GS300.

This latest creation from the engineers at Lexus provides you with the four-door access and spacious interior necessary to accommodate your family. (Or five adults.)

But it also provides a 220 horsepower in-line six and double-wishbone suspension that makes driving more fun than you've had since you got your licence. All at a very approachable price in the mid-\$50,000 range.

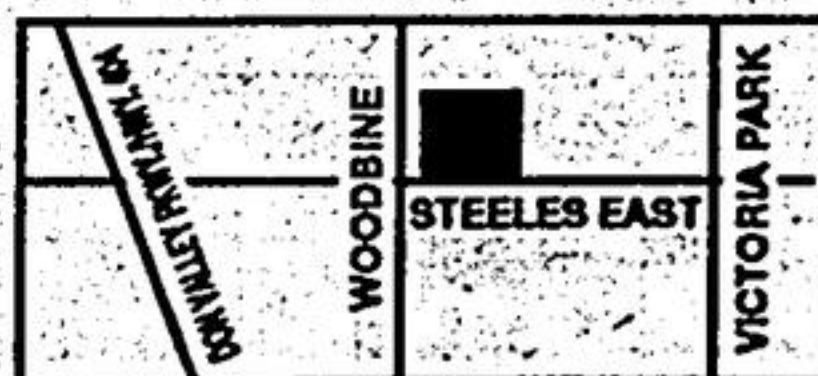
Call or visit us today for a test drive. It's the best way to enjoy the advantages of being a grown-up.



DON VALLEY NORTH LEXUS TOYOTA

475-0722

3120 STEELES AVE. EAST (JUST EAST OF THE 404)



ANTIQUES ARE BACK AT CULLEN COUNTRY BARNS!!!

4300 STEELES AVE. EAST
N.E. CORNER OF KENNEDY & STEELES

Carrocel Restorations is pleased to announce the opening of our new sales showroom at Cullen Country Barns.

In tribute to Mrs. C. Cullen who has graciously passed the torch on to us and in honour of the tenth anniversary of Cullen Country Barns we will be having a major antique clearance sale!

ANNIVERSARY SPECIALS on a large selection of: Magnificent dining room suites (9 & 10 pc.), bedroom suites, occasional tables, accessories, parlor sets, sofas, wing chairs, mirrors & much, much more!

Chippendale, Duncan Phyfe, Louis XV etc., mahogany & walnut.

ALL AT SPECIAL CLEARANCE PRICES!

4300 STEELES AVE. EAST
N.E. CORNER OF KENNEDY & STEELES
OPEN SAT. & SUN. 9:00 - 6:00 P.M.