

'Serendipity' returns stolen war medals to family

JUDY PHILLIPS
Correspondent

It's a bizarre case of lost and found that has travelled the globe and ended in the area.

About 25 years ago war

medals belonging to Wing Commander P.C. Sherren of the Royal Canadian Air Force were stolen from his son's home in Cambridge, England. It was not until years later his son, Michael, realized they were

missing.

The medal collection is one of the most valuable Canadian collections in the world and include a Military Cross with a bar, a Star, Impressed and a British War Medal and Victory

The Wing Commander died in the King's Cup Air Race at Scarborough, England in 1937.

Last year a Sherren cousin, Stephen Graham in P.E.I. received a call from a man who did not identify himself, but

said he had seen the medals up for auction in Toronto. He had heard of the Sherren family through a family history by Joe Sherren of Stouffville. He knew that there was Sherren family in P.E.I. and called to see if they knew the medals were available for auction.

This was the first the Sherren family had heard of the medals since they had been stolen.

Joe Sherren was asked to investigate. He called the auction house in London, Ontario and learned that the medals had been bought by a Toronto doctor, Dr. Len MacFayden, for \$10,000.

Joe Sherren contacted him to find out how the family could reclaim them. As it turned out he also knew of the Sherren family in P.E.I. because he was originally from there as well.

The family had a choice. Either go through the courts in England and reclaim the medals because they had been stolen, or pay for them.

Joe discussed it with his cousin Michael in Cambridge who said he was willing to pay for them to have them back in the family. It seemed like the simplest method. The doctor let them have them for the same price he paid — \$10,000.

Right now Joe Sherren has them locked safely away in a safety deposit box where they will stay until later this year when he plans to travel to P.E.I. first to show them to his relatives there and then travel on to England where he will personally deliver them to Michael.

"It was a lot of serendipity that brought the medals back to the family," said Sherren.

Bluebirds in good hands

(From page 7)

the Rouge Valley south of Steeles Ave. The fruits of his labor have finally started to pay off. Last summer he was delighted to report his first sighting of a nesting pair of blue birds in 25 years in that area.

He hopes the school children who walked through Milne Park and along the banks of the Rouge River this week will be so lucky. While he's confident half of the 12 boxes set up by the students will eventually get nested, he concedes the inhabitants are more likely to be wrens, chickadees or tree swallows than bluebirds.

But every little bit helps, he insists. The bluebird population is on the rise again thanks to the installation of millions of such boxes throughout North America.

And with National Wildlife week coming April 18 to 24, Lewis feels there is no time like the present to harness the youthful idealism of kids in his attempt to save the bluebirds and the Rouge.

LANSING'S FREE FENCE & DECK SEMINAR

Learn "How-To" from The Yes, We Wood People™ in Markham

You'll learn all about...

- Planning • Designing • Building • Choosing lumber: Pressure-treated or Cedar?
- Available hardware • Wood Finishes — for looks and protection • Timberscaping.

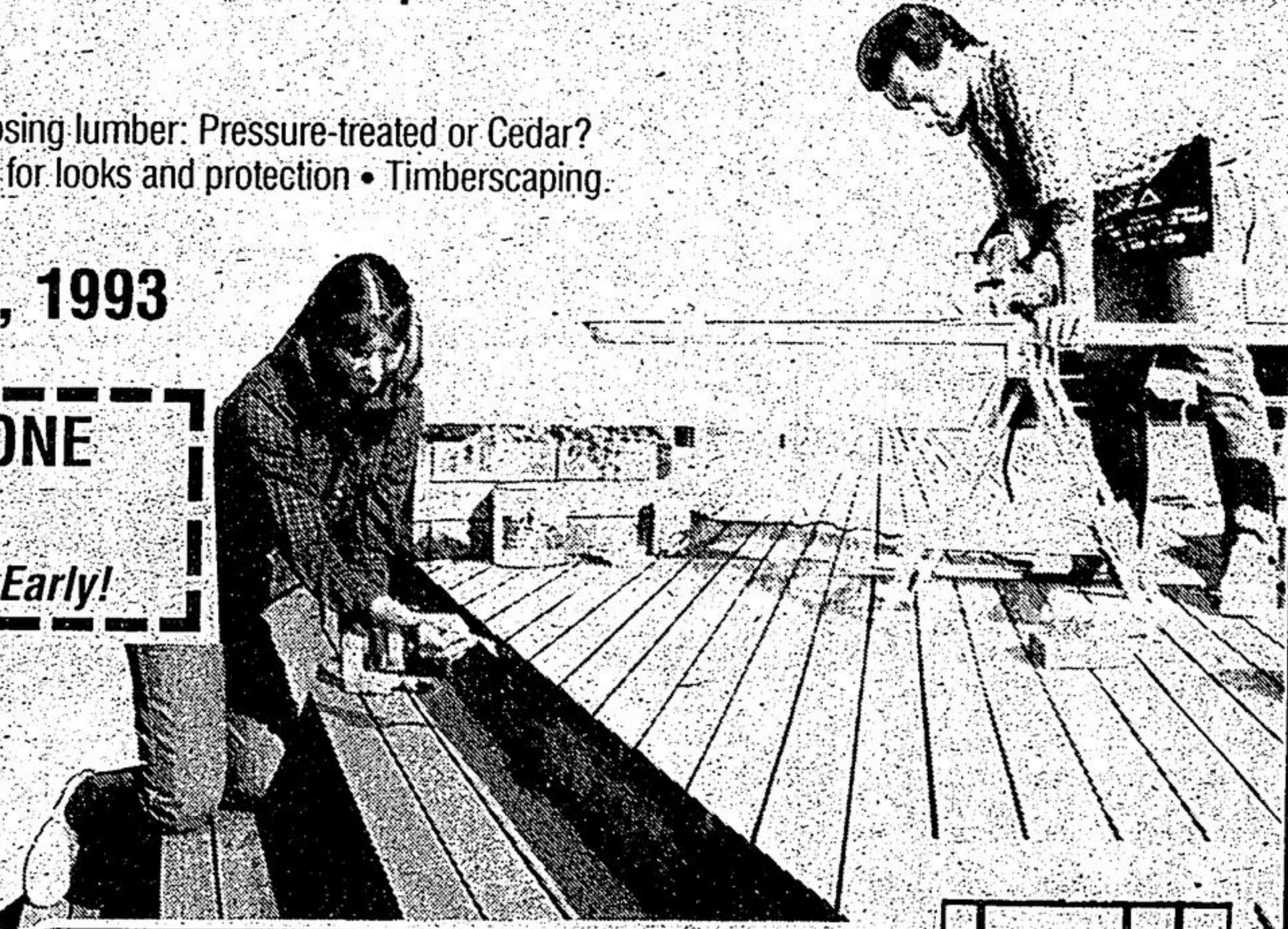
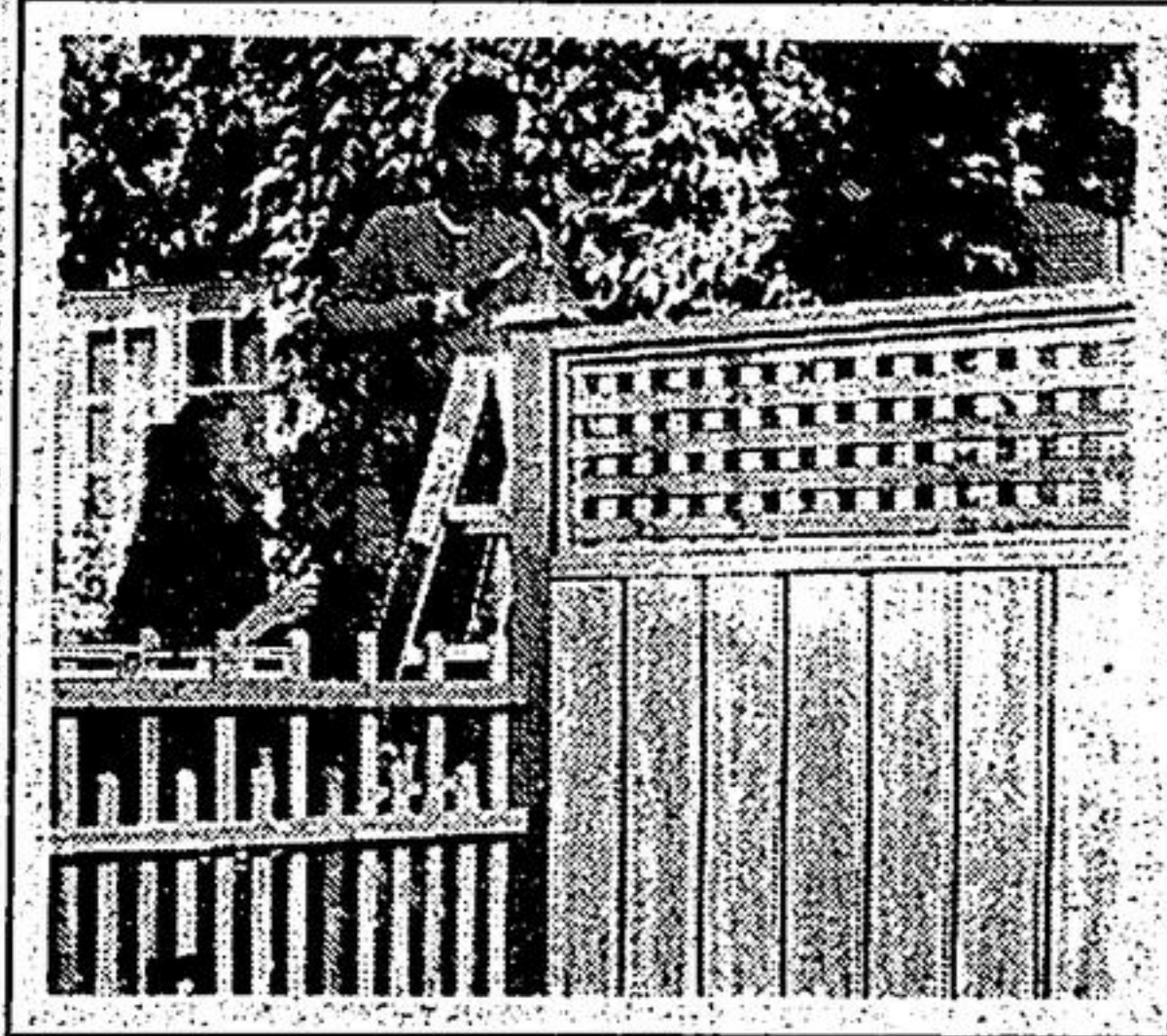
Learn "How-To" for Professional Results!

THURSDAY, APRIL 22, 1993

22 Heritage Road, 7pm to 9pm

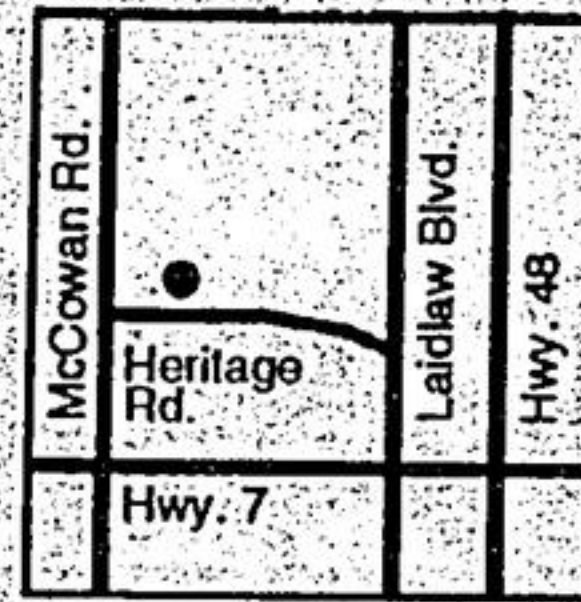
**REGISTER BY PHONE
798-7375**

Limited Seating, Register Early!



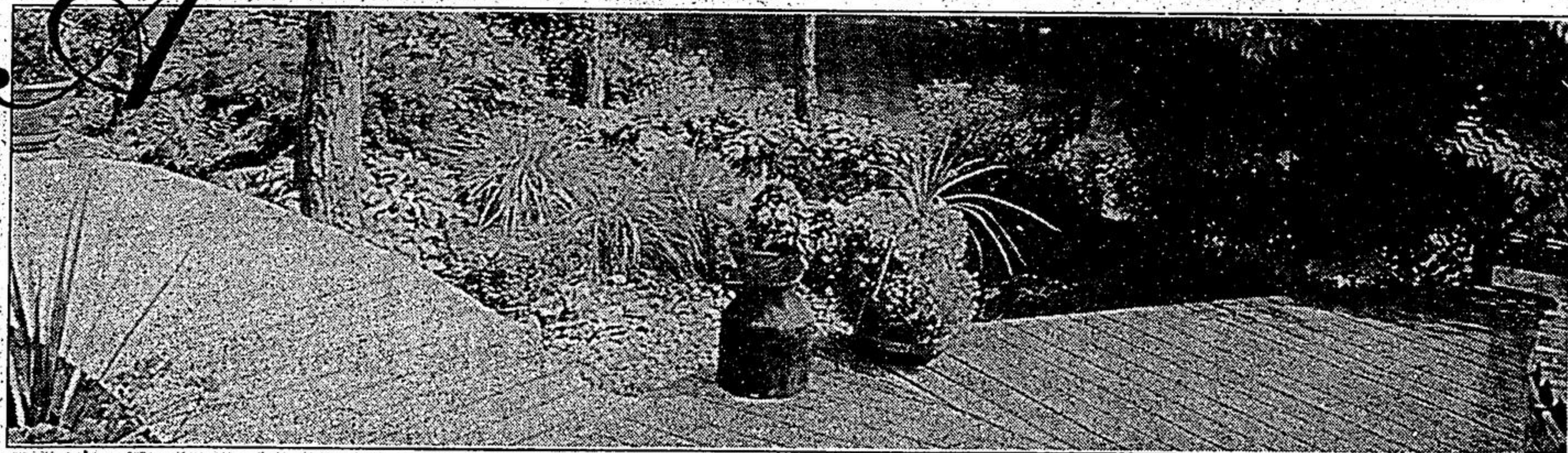
LANSING BUILDALL

The Yes, We Wood People



Lansing Distribution Centre, 22 Heritage Road, Markham

A BEAUTIFUL GARDEN IS ONE OF LIFE'S GREAT PLEASURES.



That's why Parklane has been part of Ontario's finest homes for two generations. Our expert landscape design and construction team works closely with our clients to create unique gardens that compliment and harmonize with their natural environment.

We're pleased to announce the 1993 opening of our Model Gardens & Landscape Design Center. Open to the public Mon. - Fri. 10 a.m. - 6 p.m., Sat., Sun. & Holidays 11 a.m. - 5 p.m.

Come tour our gardens and consult with our landscape architects.

Come be inspired at Parklane!

PARKLANE MODEL GARDENS
model gardens, garden tours, professional consultation, product information and displays, nursery, seminars and workshops.

On Stouffville Road, 1/2 mile East of Highway 404 416-887-5851

PARKLANE
Creating fine Presidential gardens for over three decades.

