

COUNTRY COZY HOT PRICE!!
 For only \$229,000 have your country elegance/urban access. Just N. of Port Perry. Approx. 2,600 sq. ft. 1.25 acres of decadence, cuddled up to the forest & Non Quon River green space. Experience it. Call Allan Mountford, sales representative Sutton Group Heritage Rlty. Inc. toll free 1 416-550-5278, or (416) 619-9500.



HERITAGE REALTY INC.

FIRST TIME BUYER!



\$121,900

- new windows
- 200 amp
- bath renovated
- walk up basement
- mature lot
- Stouffville area

SKI DOO IN YOUR BACKYARD!



\$319,000

- almost 4 acres of beautiful country
- 2600 sq. ft. executive home
- ceramics & oak thru out
- multiple fireplaces
- vendor must sell!!!

2 - 1 acre lots outside of Claremont \$169,000

Call Grace Jorgensen Sales Representative 649-3734 (res.)
 Re/Max Quality One 683-1861 (office)

IMC REAL ESTATE INC., REALTOR



**3 GREAT CONDOS
 2 RAYMERVILLE DRIVE**

This superb 1202 sq. ft. 2 bdrm., 2 baths, penthouse suite has a terrific unobstructed south/west view ~~50% OF ASKING~~ on the solarium & balcony. It includes 2 underground parking, appliances and a locker. Vendor will consider all offers.

\$186,900. This very bright impeccably kept 2 bdrms., 2 baths., 1124 sq. ft. suite faces west into the setting sun. The suite has a large balcony, locker and includes mirror closet doors, blinds, valances plus 5 appliances.

\$179,000. With an unsurpassed view from the balcony of this 1124 sq. ft. 2 bdrms., 2 baths. suite, you can see the budding of the morning sunrise. The master contains 4 pce. ensuite & spacious walk-in closet.

YOUR HAMPTON GREEN SPECIALIST

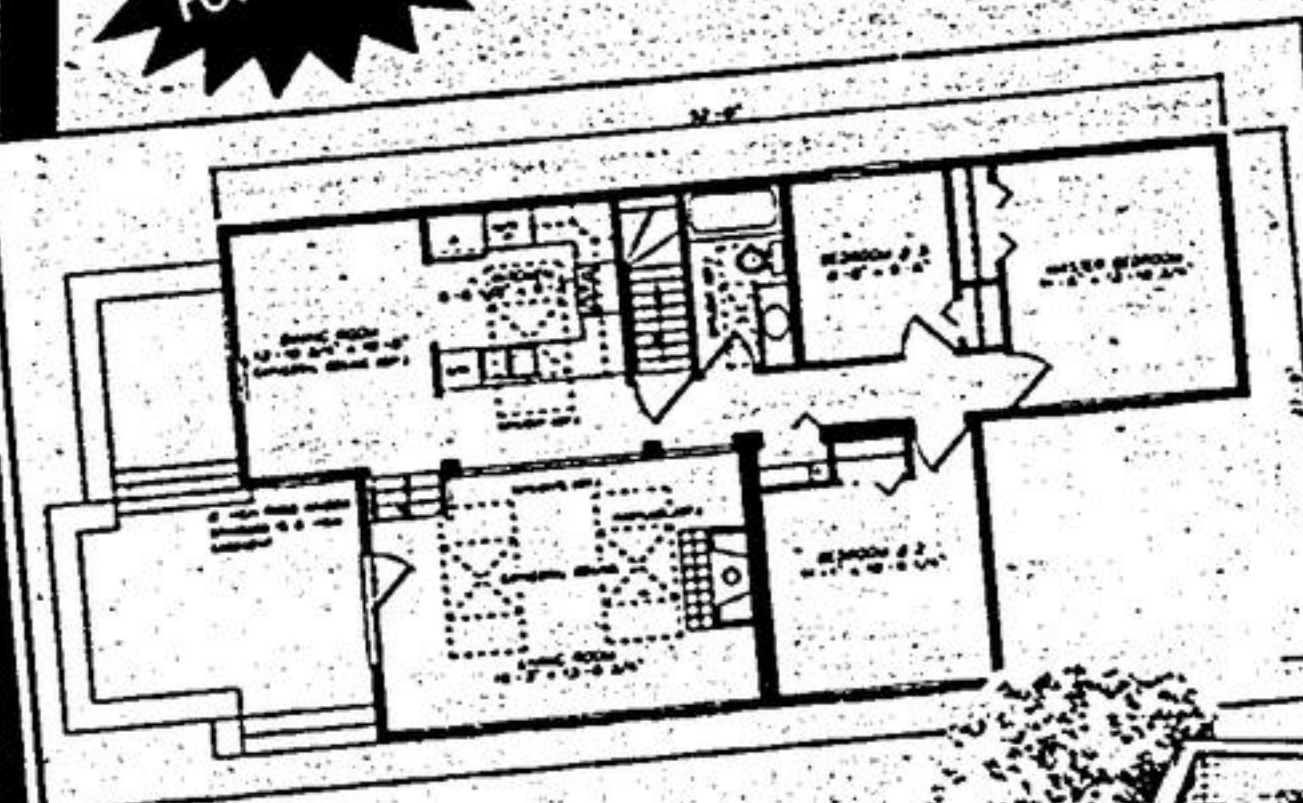
Dwight Davis, Sales Representative 696-9000 or 377-5290



Building your future...
Guildcrest Homes

The Lake Louise

The windows are concentrated on the front of this three bedroom split level making it ideal for that special "view" property. The large, sunken living room with a cathedral ceiling and expansive windows will be filled with light, especially if you add the optional skylights. The dining room features sliding patio doors leading to an optional deck.



\$63,956

(ON YOUR LOT)

**Great Selection, Great Savings...
 Great Idea!**

Our dealer in Durham and York Region is:

Pinetree Systems Ltd.

Conc. 12 & Highway 46, 3 miles North of Highway 7

Woodville, Ontario K0M 2T0

(705) 432-2734 Tor. Line (416) 505-6048

PRICES START FROM \$49,454 INSTALLED ON YOUR FOUNDATION.

- Over 40 Superb Modular Designs



- Value packed starter homes to luxurious executive homes

BESTLINE MORTGAGE CORPORATION

5.75%
 6 MO. (CONVERTIBLE)

TODAY'S BEST RATE

8.50%
 5 YEAR N.H.A.

(BORROWER TO QUALIFY - RATE SUBJECT TO CHANGE)
 LIMITED TIME OFFER - NO APPRAISAL FEE TO FIRST TIME BUYER
 CALL US FIRST ...

FOR THE BEST RATES ON 6 MONTHS TO 25 YEARS TERM

FOR FRIENDLY AND PROMPT IN-HOME SERVICE 7 DAYS A WEEK CALL:

471-6000 (24 HOURS) 505-0134 (TOR. LINE) 471-6999 (RES.)

VIJAY PATEL or KAPIL PATEL

**To place your
 Real Estate ad call**

Dorothy Young, 294-2200

or

Joan Marshman, 640-2100

IMC REAL ESTATE INC., REALTOR



**GREAT BUY!
 UNIONVILLE BEAUTY
 WHAT A PRICE!**
 \$419,000. Fabulous executive all brick 4 bdrm. home on 50 x 121 uniquely landscaped lot, in the Bridle Trail. Main flr. laundry, fam. and sunrm. with skylights. Spacious Hollywood kit. leading to custom deck. Over \$75,000 in extras and upgrades.

30 ACRES
 10 - 1 acre registered lots, approx. 3,000 sq. ft. home. \$1,900,000.



**SUPERIOR 5 BEDROOM
 RAISED BUNGALOW \$243,000**
 A fabulous inground swimming pool for your summer pleasure. This well maintained home is a must for a family that is looking for space to grow. Includes 5 appliances and a separate entrance to potential in-law suite.

LAND - LAND - LAND
 \$214,000. buys you tranquility on beautifully treed 5.5 acres. Build your dream home or retain existing small bungalow - tenant will stay. Prime acreage on Hwy. 48. Will consider any offer.

please call for the above Dwight Davis, Sales Representative
 696-9000 or 377-5290



LOWER RATES!
 NORTH YORK & YORK REGIONS' PREMIER MORTGAGE SPECIALISTS

This week's best...
 5 YEAR* **5.70%** Variable
 5 YEAR* **8.50%** Fixed

*To qualified applicants, rate & terms subject to change

Northwood Mortgage Ltd.

A TRULY PROFESSIONAL MORTGAGE SERVICE FOR THE "LEAN MEAN 90'S"

• STABILITY • SAVINGS • SERVICE

Free Transfers to Qualified Borrowers
 For a Rate and Strategy Comparison Call...

969-8130

Northwood Mortgage Ltd.

"Because You Deserve Better"

HOURS:
 Mon.-Fri. 9-9
 Sat. 9-5



10225 Yonge St. Richmond Hill, Ont. L4C 3B2 - Newmarket 841-8130