

Best Homes

RIDGE NORTH Realty Ltd. Realtor 

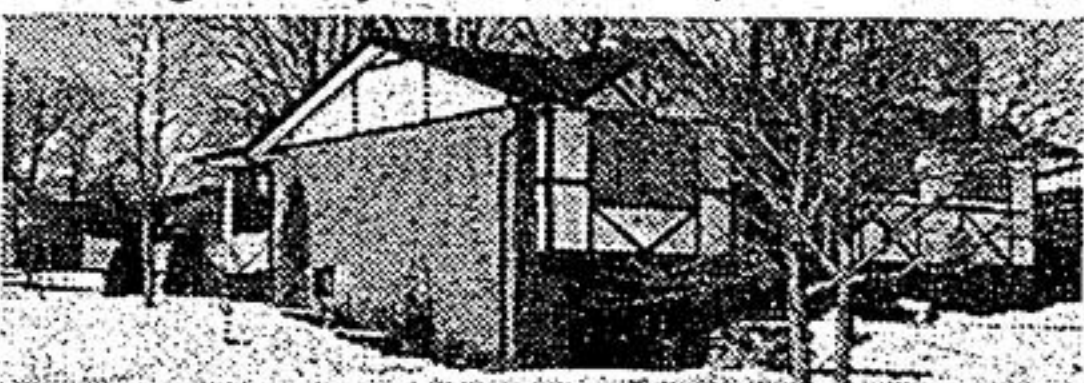
PORT PERRY PLAZA
(416) 985-9777 FAX 985-9161

Member Oshawa & District Real Estate Board
Member Lindsay & District Real Estate Board



COZY 2 BEDROOM WATERFRONT HOME

Eat-in kitchen, living rm. boasts woodstove & great lake view, sunporch with walkout to large deck, separate boat house/workshop. All situated on large private lot surrounded by cedar hedge. Asking \$149,900.



PRINCE ALBERT

Quality Jeffrey built 3 bdrm. raised bungalow. Eat-in kitchen with walkout to deck. Sun room off dining rm. Finished family rm. with brick fireplace. 3 pc. washroom off rec. rm., greenbelt lot to south for privacy, view of Lake Scugog. Value plus for your dollar. Asking \$189,700.



COZY ONE BDRM. OVERLOOKING LAKE SCUGOG
New kitchen, wiring, Jacuzzi tub. Living rm. with airtight stove, quality thermo windows throughout. Ideal for starter home. Priced to sell quickly. Asking \$89,000 call 985-9777 to view.



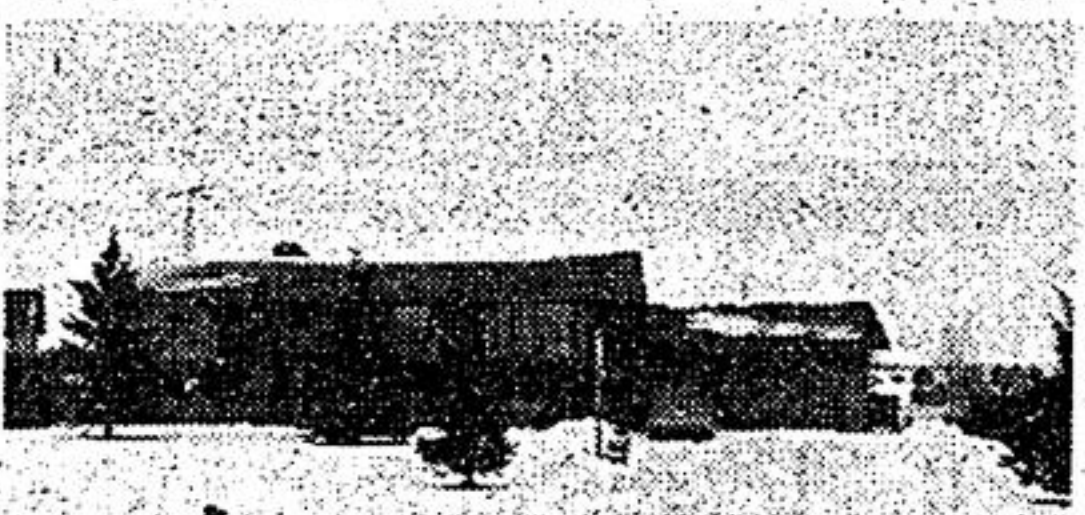
APPLE VALLEY

3+1 bdrm. bungalow. Many features include oak kitchen with w/o to screened porch, finished rec. rm. with Elmira airtight and walkout, 2 - 4 pc. washrooms, 60 oz. carpet, professional finishing and decor throughout. Only \$219,900.



CAWKERS CREEK, PORT PERRY

Spacious raised bungalow, large eat-in kitchen with greenhouse nook, walkout to large deck, large living rm. and dining area, games and rec. rm., central air and vac, economical gas heating. Mature lot, nearly 1/2 acre. Oversized garage. Priced for this market. Asking \$199,700.



RIVERFRONT CUSTOM BUILT
Brick raised bungalow, 3 bdrms., sunken livingroom with fieldstone fireplace. New kitchen with hardwood flrs. and walkout to large deck, finished basement has 2nd fireplace and games rm. Central air & vac, on manicured 1.85 acres with pond and 142 ft. of riverfront. Offered at \$295,000. Please call 985-9777.

Building your future...

Guildcrest Homes

The Homestead

This is a contemporary two- or three-bedroom bungalow with a touch of the past in its styling. The spacious living room makes entertaining easy, as does the large kitchen and dinette with a patio door leading to the wrap-around deck. You will appreciate the convenience of the main floor laundry and optional ensuite.



\$71,517 (ON YOUR LOT)

Great Selection, Great Savings... Great Idea!

Our dealer in Durham and York Region is:

Pinetree Systems Ltd.
Conc. 12 & Highway 46, 3 miles North of Highway 7
Woodville, Ontario K0M 2T0
(705) 432-2734 Tor. Line (416) 505-6048

PRICES START FROM \$49,454 INSTALLED ON YOUR FOUNDATION.

- Over 40 Superb Modular Designs
- Value packed starter homes to luxurious executive homes


GUILDCREST HOMES™



RE/MAX
An international network of independent member brokers

RE/MAX scugog realty limited
144 QUEEN STREET, PORT PERRY
independent member broker

985-4427 TOR. LINE: 428-1332
184 OFFICES THROUGHOUT ONTARIO



PORT PERRY HOBBY FARM
50 acre hobby farm with 3 bdrms. Century home, lots of original features still remain, 2 barns; pond and mostly fenced. Excellent location call to view. Robin Timmins* 985-4427 24 hr. pager.



SPRING TIME-COTTAGE TIME
3 bdrm. waterfront cottage located on Scugog Island 80 x 170' lot ideal for that summer getaway. Asking \$119,900 call Robin Timmins* 985-4427 24 hr. pager.



WATERFRONT CONDO
\$199,000
2 bdrms., 2 baths, approx. 1100 sq. ft. Located adjacent to downtown Port Perry, short walk to amenities, large park area including boat docking. Contact Mark Puckrin* 985-4427 24 hr. pager.



ROLLING 100 ACRE RETREAT
Private, treed property, spring fed pond, 3 bdrm. home with large living area, cathedral ceiling. Nice view, 20 minutes N/E of Uxbridge. \$290,000. Contact Mark Puckrin* 985-4427 24 hr. pager.



COUNTRY LIVING \$259,900
Spacious 3 + 2 bdrm. home with finished walkout basement, 32' x 40' detached workshop. 10 acres, nice view. Located 10 min. N/E of Uxbridge, contact Mark Puckrin* 985-4427 24 hr. pager.




WATERFRONT
Classy year round cottage 10 min. east of Port Perry, 3 bdrms., custom kitchen, large living area with fireplace, small but private yard, gravel beach \$129,000.

QUALITY COUNTRY BUNGALOW
25 min. N/E of Uxbridge, 1 acre with nice view. 2+1 bdrm., top quality throughout, professionally finished fieldstone fireplace, 2nd kitchen. Contact Mark Puckrin* 985-4427 24 hr. pager.



POWER OF SALE!
Spacious 4 bdrm. home on edge of town, beautiful mature treed lot just under an acre, large, main flr. family rm. with fireplace, huge kitchen! \$195,000 Tony Maciver* 985-4427 24 hr. pager.



INDUSTRIAL
6400 sq. ft. 6 unit brick building. Units have gas heat, 100-amps., 3 phases available, 2 pc. washrooms 14 ft. roll-up doors. \$289,900 for more information call Tony Maciver* 985-4427 24 hr. pager.



YOU DESERVE A HOME LIKE THIS
Contemporary 2 storey, 3 + 1 bdrms., 3 baths, mostly finished basement, gourmet kitchen, oversized, 3 car garage, quality custom designed home. Port Perry. \$289,500. Contact Mark Puckrin* 985-4427 24 hr. pager.

BUILDING LOTS AND ACREAGES
- 1 acre off Durham #23, nice view \$54,900.
- 1.4 acres paved road rm. for home & pond \$49,000.
- waterfront Lk. Scugog 114' x 230' now \$74,900.
- 155' x 250' \$45,000.
- 10 acres treed with pond and stream \$79,900.
- 1/2 acre off Hwy. 12 with orchard \$59,500.
All above properties located 15 - 25 minutes N/E of Uxbridge. Contact Mark Puckrin* 985-4427 24 hr. pager.



\$149,900 2 ACRES
Neat well maintained 3 bdrm. home with finished bsmt., 3 car garage/workshop, small barn, 1 acre softwood bush, private but not isolated. Located 20 minutes north of Port Perry. Contact Mark Puckrin* 985-4427 24 hr. pager.



JUST LISTED AT \$299,500
Excellent lakefront home with westerly exposure, good sandy beach. For info call 985-4427, 428-1332 Guy Latreille*.



EXCEPTIONAL LAKEFRONT
For the discriminating buyer, 3 bdrms., 3 baths, large entertainment centre with walk-out, 2 fireplaces over \$100,000 in upgrades. A must to inspect. Asking \$399,900 call Guy Latreille* 985-4427.

*Sales Representative **Assoc. Broker