

Real Estate

Advertising Section - published twice weekly for the Markham Economist and Sun/Stouffville-Uxbridge Tribune, a division of Metroland Printing, Publishing and Distributing Ltd.



FAMILY TRUST CORPORATION REALTOR

Welcome home

UXBRIDGE
649-2231 852-9781

OPEN SUNDAY
12 - 4 P.M.



BOB ABBATERUSSO*
Res. 852-6676



SHEILA DISLEY*
Res. 473-2963



SINIKKA FITZGERALD*
Res. 852-3874



LLOYD GROSE*
Res. 852-3612



LYNDA HAYWARD-BAIRD*
Res. 852-7507



MARY HOGG*
Manager
Res. 852-5292



STACY KEARLEY*
Res. 985-6683



JENNIFER KENNY*
Res. 705-357-2458



MARY LYNNE MACVICAR*
Res. 473-2977



MARLYN McDONALD*
Res. 705-357-2527



BILL MORRISON*
Res. 852-5128



HEIDI MORRISON*
Res. 852-5128



CORA PEIRSON*
Res. 852-5808



JACK RANDALL*
Res. 852-3838



MAGIC
Trees, birds, orchids, trails, river, log home, stone, pine, glass, views, antiques, cozy, amazing, \$379,000
Lynda Baird* 649-2231.



UXBRIDGE \$225,900
Lovely Victorian reproduction with main flr. fam. rm. & a large eat-in kit. with a breakfast nook! Stacy Kearley* 649-2231.



WATCH THE SKATERS ON ELGIN POND
From this tastefully redecorated family home, lot size 68 ft. by 218 ft.! \$199,900 Mary Hogg* 649-2231.



RAISED BUNGALOW ON 25 ACRES & POND
Country living at its best. 1/2 hr. from Markham. 2 family possibility; potential galore a "must" see!! Bill/Heidi* Morrison 649-2231.



INVESTMENT PROPERTY
91.37 @ Reg. Rd. 21 & Hwy 12 in Manchester. Potential for commercial/residential development, 3 road frontages. Bill Morrison* 649-2231.



PORT PERRY "ISLAND" BUILDING LOT
Scenic property overlooking Lake Scugog 89' x 221'. Build your dream home. Priced to sell @ \$95,000 Bill/Heidi* Morrison 649-2231.



RAISED BUNGALOW ON GORGEOUS 50 ACRES W/ PONDS
One of a kind in Uxbridge minutes to town. Lower level completely finished. 60' x 60' horse barn, pasture & kennel license. Bill/Heidi* Morrison 649-2231.



INCREDIBLE VALUE
83 acres of ++ seclusion, hardwood, pond, stream, unique home, minutes to 404. Reduced to \$439,000 Cora Peirson* 649-2231.



NEEDS FINISHING START HERE \$144,500
1.4 acre w/barn, home has 20' x 40' addition w/ lower walkout. Lovely property near community north of Uxbridge. Marlyn McDonald* 852-9781.



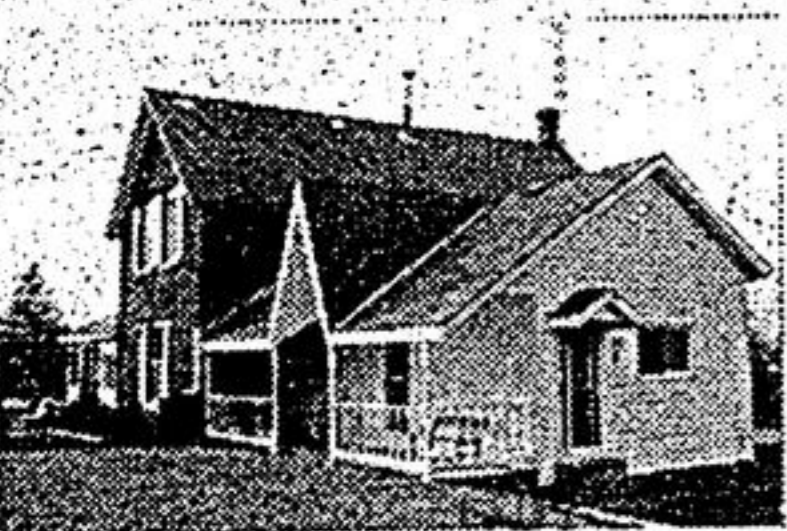
LET'S LIVE IN THE COUNTRY
3/4 acre with an incredible view, eat-in kitchen, main flr. fam. rm., small barn with hydro & water \$134,800 Sheila Disley* 649-2231.



VILLAGE SETTING \$110,000
Cute and cozy, backing onto Park and community centre. Just north of Uxbridge. Walkout from kitchen to deck, enclosed front porch. Bob Abbaterusso* 649-2231, 852-9781.



POST & BEAM \$175,000 ADJACENT TO PARKLAND
Approximately 10 miles north of Uxbridge. Secluded 1/2 acre plus nicely treed lot. Home feature cathedral ceilings, garage. Jack Randall* 649-2231.



LEASKDALE CENTURY CHARMER \$199,000
Beautiful restoration on 3/4 acre lot. Fireplace, double garage. Attractive mortgage available. Lloyd Grose* 852-9781 or 649-2231.



FARM 61 ACRES \$299,900
Refurbished Century abutting Uxbridge, original floors + trim; new kitchen, barn + out buildings. Mary MacVicar* 642-2122 or 852-9781.



EXECUTIVE CONDOMINIUM IN UXBRIDGE \$169,900
Beautifully appointed end-unit townhouse with large bright kitchen, fireplace, 2 ensuites. A must see! Sinikka Fitzgerald*, 649-2231, 852-3874.

*Sales Representative **Assoc. Broker.

Serving Our Community for Over 20 Years



GEORGE MILLER FINANCIAL SERVICES INC.

MORTGAGE SAVINGS
\$\$\$\$\$\$\$\$

9.74%
10 years A.R.M.

MORTGAGE RENEWAL

No Cost Transfers
MALCOLM D'SOUZA

502-2267
(Toronto Line)

940-6007
(24 Hours)

Call 24 hr. Rate Line for best rates

* Rates subject to change. Applicants to qualify.



RAVINE! RAVINE! RAVINE!
ROBERT HARRINGTON II
3560 SQ. FT. \$524,900

Luxury living at its finest! This home is loaded with upgrades incl. hardwood & ceramic flrs., bay window, sec. system, upgr. brdrm., pot lights, custom faucets, modern eat-in kit. Also a large sunken master bdrm. with sitting room, sunken liv. rm. & fam. rm. with w/o to huge deck overlooking ravine!! W/o bsmt. Much, much more. Come and see for yourself, you'll be glad you did. To view this incredible home, call Sal Lunetta*, 785-7800, 24 hrs. Transworld Simcoe Inc. Realtor.

