



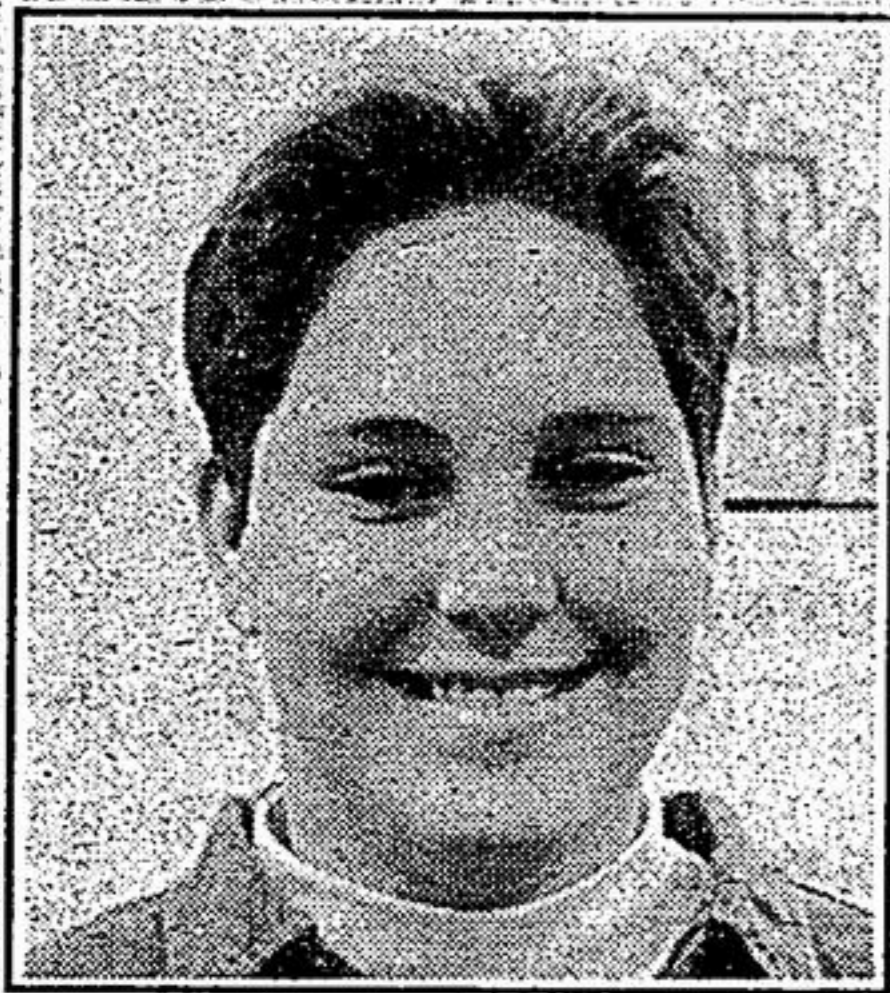
PHOTO/LORI EMMERSON

Tulip time

Kathy Jeffery, and children Rebecca and Nicholas, planted tulip bulbs at Unionville Library recently. The bulbs were donated by Sheridan Nurseries.

Economist & Sun & McDonald's present

CARRIER OF THE MONTH



Tara Smith, 13 has been delivering for the Economist & Sun since Oct. 13/90. Tara delivers to 75 homes in the Unionville area.

Tara's hobbies include baseball, basketball & playing the guitar.

Tara is in her third level of guitar. Congratulations & keep up the good work!

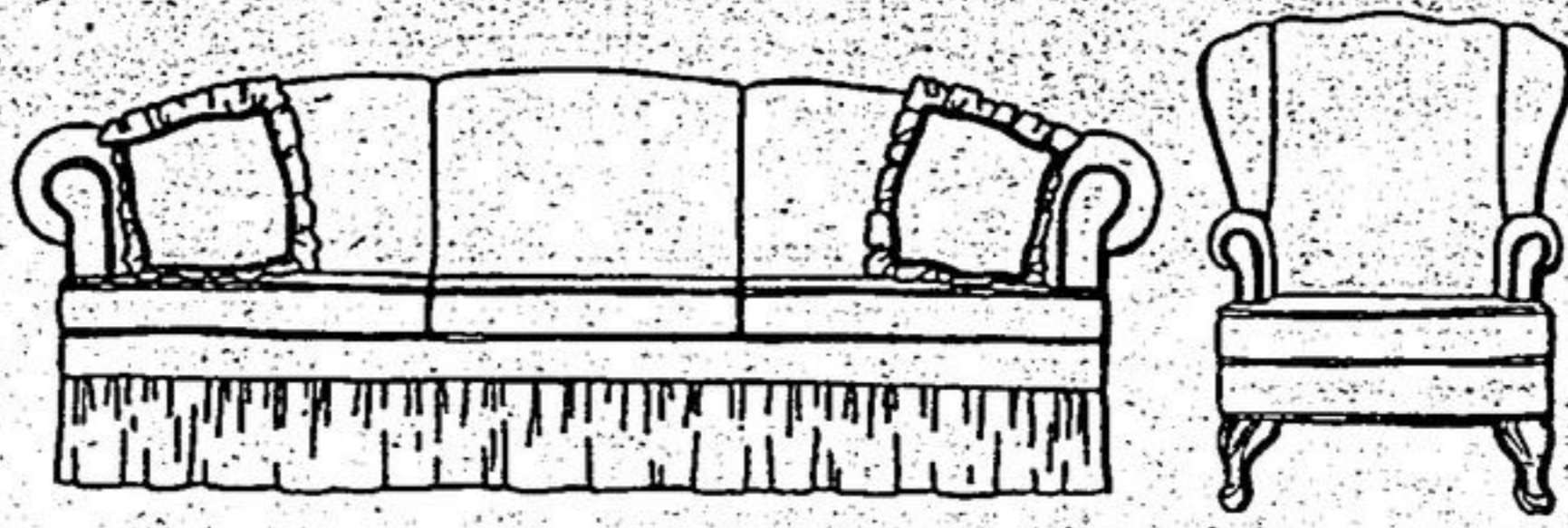
If you think your carrier for the Economist & Sun should be selected for Carrier of the Month, please call Megan Pike at 294-8244.

Economist & Sun (Logo)
McDonald's (Logo)

The Economist & Sun would like to thank McDonald's for their support in co-sponsoring the Carrier of the Month.

THE 18TH ANNUAL STORE-WIDE WOODCRAFT JANUARY SALE

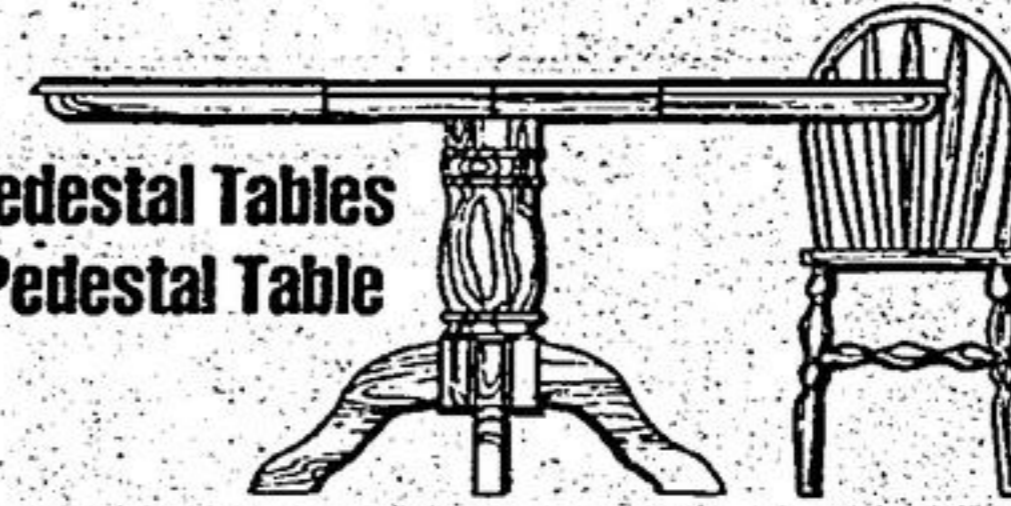
Our January Sale is a bit soft up front,



Unbeatable Prices on All Our Country Upholstery. Incredible Savings on Luxurious Spring Air Mattresses

sort of flat in the middle,

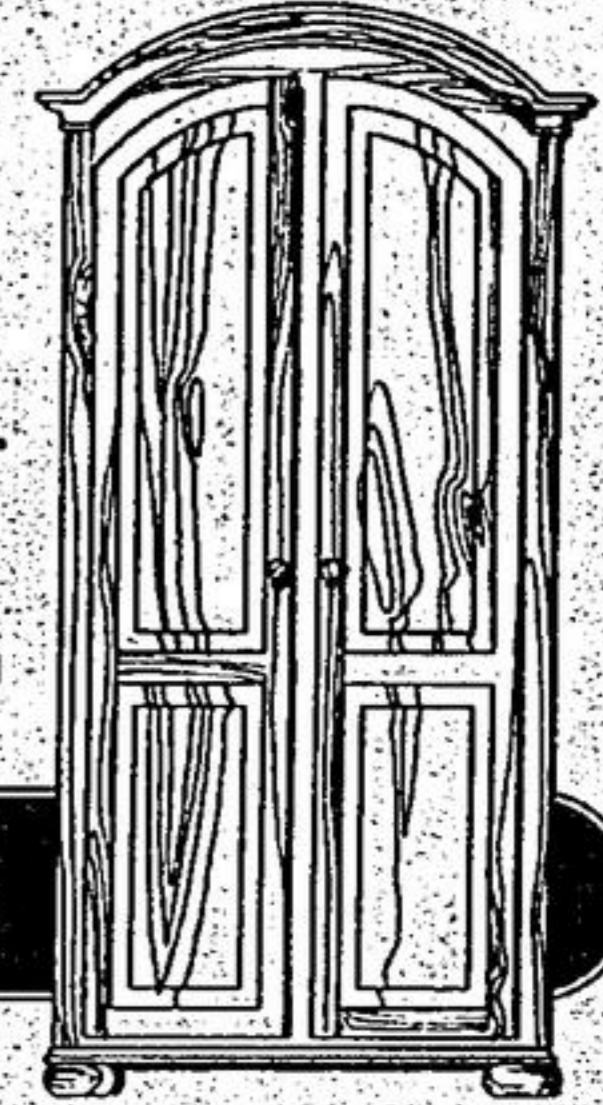
30% Off All Single and Double Pedestal Tables
Special! Oak 42" Round Single Pedestal Table
With 2 12 inch Leaves \$695



Bow Back Bent Arrow Chair
in Maple \$119 In Oak \$139

but very open-ended -

Solid Pine Arch-Top 34 Armoire. Reg.\$1295 Now! \$995



UP TO 40% OFF ALL FLOOR MODELS

which is really quite well-rounded for a once-a-year sale on a wide variety of finely-crafted solid wood furniture.



SOLID OAK & PINE CRAFTSMEN SINCE 1974

OPEN SUNDAY

The Barn:
Markham Rd. & Steeles Ave.
293-2279

Workshop & Showroom:
370 Denison St. E., Markham.
475-2488

OPEN SUNDAY

Whitby:
111 Dunlop St. W. at Brock St.
608-2770

OPEN SUNDAY

Mississauga:
2185 Dundas St. W. (at Dunwin)
607-2247

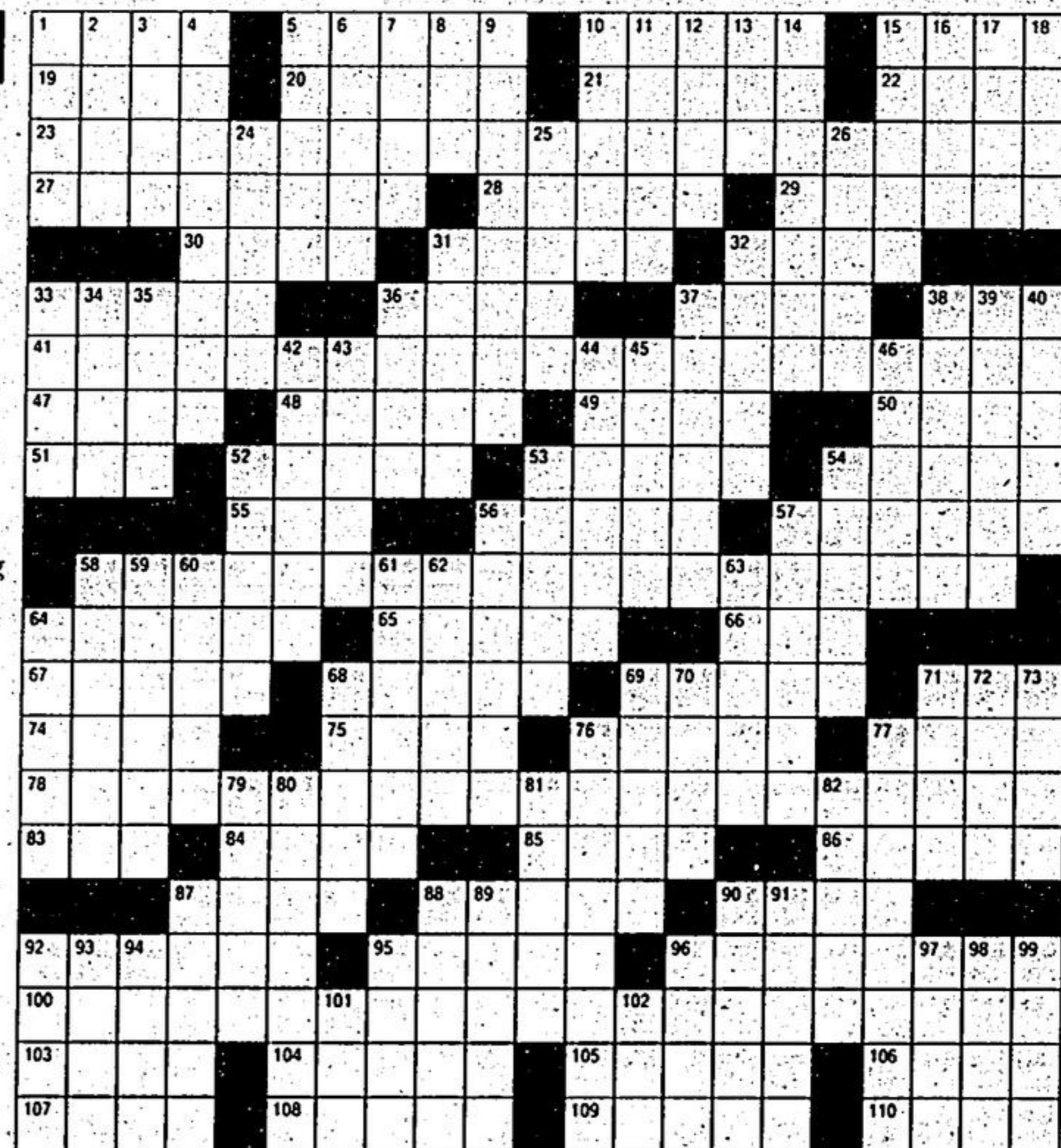
The New York Times

CROSSWORD

LOGOGRIPHS

BY ERNST THEIMER/EDITED BY EUGENE T. MALESKA

- | | | | |
|--|----------------------------|-------------------------------|-----------------------------------|
| ACROSS | 49 Car part | 96 Cement component | 18 Jaunty |
| 1 "... care'll kill ---": Jonson | 50 Grandma Moses | 100 Sour-grapes comment on 78 | 24 Prodding person |
| 5 Traveler | 51 Have a bawl | 103 Get one's goat | 25 Atlas feature |
| 10 Petruchio, for one | 52 Log | 104 Middle East ruler. | 26 Flâneur |
| 15 Break | 53 Ground hominy | 105 Hiatus | 31 In back |
| 19 Singer Vikki from El Paso | 54 Male deer | 106 "— kleine Nachtmusik" | 32 Popish Plot fabricator |
| 20 Philippine fetish | 55 Panay native | 107 Algerian port | 33 Steatite |
| 21 "— Lucy" | 56 Rent | 108 Slender | 34 Brain passage |
| 22 Residence | 57 Makes amends | 109 Las Vegas natural | 35 Theater award |
| 23 Engine cooler | 58 Smart curing utensils | 110 Rigel or Betelgeuse | 36 Wood-trimming tool |
| 27 23 & 41 Across; 78 & 100 Across; 58 Across and its clue | 64 Hummeling machines | DOWN | 37 Weaken |
| 28 Excessive | 65 Eats | 1 Recorded proceedings | 38 Voiced |
| 29 Most curious | 66 Catfish or Cannery | 2 Famed lyricist | 39 Depends |
| 30 Like the fairy-tale duckling | 67 Twin crystal | 3 Sector | 40 "Then hey for ---": Burns |
| 31 Resource | 68 Osprey's kin | 4 Chevrotains' genus | 42 Devout insect? |
| 32 Sole | 69 Mopsus and Calchas | 5 Deadly | 43 Dido |
| 33 Name | 71 Set | 6 Rootlessness | 44 Pester |
| 36 "Vissi d'—": Puccini aria | 74 Gudrun's husband | 7 Edges | 45 Are |
| 37 Lose color | 75 Latvian seaport | 8 W.W. II sphere of action | 46 Majorette's wand |
| 38 Indian sheep | 76 Sri Lankan aborigine | 9 Vigorous | 52 Tidal bore |
| 41 Why 23 Across needed repair | 77 Eden discard | 10 Diacritical mark | 53 Heredity factors |
| 47 Magnifier | 78 An 1849 event | 11 Alaskan islander | 54 Frets |
| 48 Antipodean soldier | 83 Double curve | 12 Oliver Twist's entreaty | 56 Straight |
| | 84 Religious faction | 13 Señora Perón | 57 Ethically neutral |
| | 85 Bedfellow | 14 Calif. beach | 58 Mower paths |
| | 86 External | 15 Disreputable | 59 Sam and Tom |
| | 87 Exclamations of triumph | 16 Observe | 60 Keepsake |
| | 88 Fashions | 17 Alvin Childress's TV role | 61 Purposeless |
| | 90 Dray | | 62 Special vocabulary |
| | 92 Short sock | | 63 Skin irritation |
| | 95 Shiny fabric | | 64 Timber tree of Central America |



- | | | | |
|------------------------------|----------------------------------|---------------------|-----------------------------|
| 68 Several Danish kings | 77 Supports of sorts | 88 Won at chess | 95 Ko-Ko's weapon |
| 69 Barking circus performers | 79 Sackcloth's partner | 89 Sea lion, e.g. | 96 Croat or Bulgar |
| 70 Tense | 80 Pendulous part of a dog's ear | 90 Mythical siren | 97 This may lead to lead |
| 71 Style; taste: Fr. | 81 Lowest point | 91 E.T. or Alf | 98 Actress Louise from N.Y. |
| 72 Gaelic | 82 Kind of column | 92 Kind of haïrdo | 99 Elbe tributary |
| 73 Annealing oven | 87 George or Grace | 93 Roulette bet | 101 Japanese apricot |
| 76 Contemptibility | | 94 Often-chewed nut | 102 Mimic |

Answers are on page 11