

The Best Choice is Here!

TERM	GIC	RSP
1	7.60	7.60
3	8.50	8.50
5	9.00	9.00

Rates subject to change

GIC'S • RRSP'S • MUTUAL FUNDS • LIFE INSURANCE • ANNUITIES • RRSP'S • TAX PREPARATION • MORTGAGES

157 Main St. N. Markham 471-2311

The Tribune

Stouffville Weekender

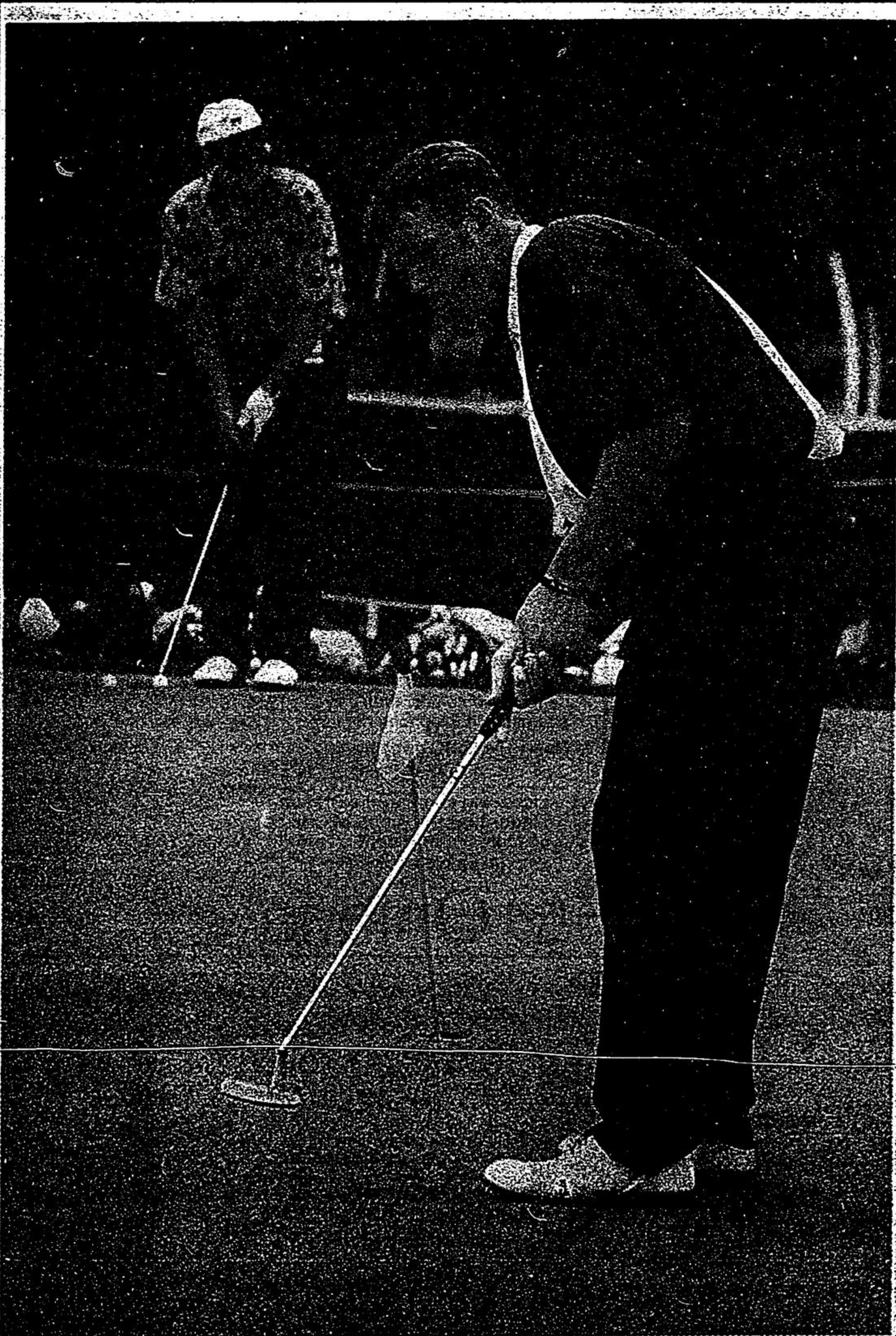
Auto Express

MERCEDES BENZ

REPAIR SPECIALIST

172 BULLOCK DRIVE UNIT 31
MARKHAM
471-8660

Vol. 10 No. 27 A Metroland Community Newspaper Saturday, June 25, 1994 56 Pages 50¢ (17¢ plus 3¢ GST)



Classic is here

The Chrysler Celebrity Classic is in town this weekend at Emerald Hills Golf and Country Club. The golf tournament features 80-plus sports and entertainment celebrities. Above, Phoenix Suns star guard Dan Majerle puts his best effort into a shot. The tournament wraps up tomorrow, and tickets are available at the gate for \$10 for adults, or \$5 for children.

Photos/STEVE SOMERVILLE

Water system deal offered

By MIKE RUTA
Correspondent

Musselman Lake and Ballantrae residents would pay \$13.37 per foot of their lot frontages for a communal water system in addition to an annual fee, it was announced at a meeting on Tuesday at the Ballantrae Community Centre.

Town engineer Tom Parry said the numbers aren't yet final, though they are about 95 per cent accurate.

That means a resident with a

50-foot frontage would pay \$1,870, when costs for the hook-up and water meter installation are included. A lot 100 feet in width would mean a payment just over \$2,500. Residents would have the option of paying their share in one lump sum, or having it added to their tax bill and spread out over 10 years with an interest rate of eight to 10 per cent. Corner and irregularly-shaped lots, in addition to those deemed unfit for building, would be charged less.

(Please see page 2)

No warnings for town water wasters

The town's bylaw enforcement team was working overtime last weekend to ensure homeowners are following its strictly enforced summer water restrictions.

Building director Bob Bennett, who wouldn't give specific numbers, said his department has issued several \$105 fines in the past few days to people caught watering lawns and gardens or washing cars outside the restriction allowance. The 3,500 homes hooked into the town's communal water system "must understand that we have to enforce these water restrictions," in order to protect the municipal supply in case of emergency.

"If people are misusing, abusing or failing to follow the (water restriction) bylaw, they will be subject to a fine," Bennett said, who added the public has already had ample warning through town-issued notices and newspaper advertisements and articles.

Public works director Paul Whitehouse said water tower levels have dipped low enough in the past week to warrant the strictest enforcement possible and ordered a weekend enforcement watch.

Whitehouse said on Thursday, June 16 the levels were nearing the firefighting reserve levels - a low which threatens firefighting ability.

"The levels are not yet too dangerously low but we're watching and we're always concerned," Whitehouse said.

Until the end of August, homeowners can only use water for outdoor uses from 6-9 a.m. Odd house numbers may water only on odd days of the month, while even house number may water only on even days of the month.

"We're out there and we're finding people who don't follow these restrictions. There will be no warnings," Bennett concluded.

- Tracy Kibble

Art on the Street today

Downtown Stouffville is the place to be today. BIA merchants are presenting Art on the Street, in cooperation with the Latham Gallery. It is a showcase of local artistic talent, and many merchants are offering in-store specials to celebrate the event. Entertainment, and special events are featured from 10 a.m. to 3 p.m. More than 40 artists are participating.

"CANADA'S #1 MERCURY VILLAGER DEALER IN 1993"



MARKVILLE MERCURY

WINNER OF THE 1993 CHAIRMAN'S AWARD