

# ST. Stouffville's Rae visits Australia for Red Poll congress

**Editor's Note: Stouffville's Jim Rae attended the Seventh World Red Poll Cattle Congress this spring in Australia as part of a local group of farmers representing Canada. Here is his report:**

By **JIM RAE**  
Correspondent

We arrived in Brisbane on March 21 along with the rest of our four delegates. Seven countries were represented, Jamaica, New Zealand, Uruguay, Great Britain, United States, Australia and Canada.

One of our first stops was Mick Pike's Red Poll Stud and banana plantation near Coffs Harbor. Bananas are a very good crop in the area and gross income is about \$60,000 per hectare. Visited a feed lot with 20,000 cattle as well as an abattoir while in South Queensland/northern New South Wales.

We arrived in Sydney on March 24 in time for the opening of the Royal Easter Show. There were 18 breeds of cattle represented as well as many sheep breeds. The Australians put on an excellent Red Poll Show and Sale with dedicated breeders coming from as far as Western Australia.

March 27, we flew from Sydney to Perth, WA, and travelled to Valley of the Giants in southern part of West Australia to see the massive Red Tingle Trees. From here we headed to the central part of the state around Katanning. This is a major wine growing area with wineries open to the public.

A little farther north and we were into the wheat growing area. The land is very dry and in many areas salt is seen on the surface. The Australians readily admit they have cleared too much of the

land and no more land is being cleared. Many are starting a reforestation program as well as dams and dugouts being built to conserve what water they get during the wet season. There are also thousands of miles of pipe above ground which carries fresh water to farms, towns and villages. Some hotels advise that water from taps is okay for personal hygiene but not for drinking.

April 1 we flew from Perth to Adelaide in South Australia. We visited many livestock and wheat growing areas. We visited Ken Dunn's Red Poll Stud for morning tea and then on to John and Veronica Malone's for barbecue lunch. Malones were feeding 20 round bales of alfalfa per day. They expect to combine 12 tonnes of alfalfa seed and sell it at \$4 per kilo.

April 5 we arrived in Loxton, SA where the Congress was held. SA gets rain only during their winter, (May to October), and must plant grain in May and harvest in November and December. At Bob Graham's, they have 4,000 acres of spring grain which they start combining the second week of November and finish in January. After harvest, they turn the cattle and sheep on the stubble and they stay there until planting time. Most farms were between 1,000 and 7,000 acres, with anywhere from 20 to 400 cattle and 3,000 to 12,000 sheep.

Feed lots are just starting to be developed in the hope of producing better beef. They couldn't understand how we in Canada can pay \$1.25 to \$1.50 per pound for stocker cattle and sell them for \$1 or less per pound.

Besides the many Red Poll Studs, we also visited some other breeds such as Polled Shorthorn, Charlois, Belgian Blue, etc. We

also visited an open cut coal mine, a race horse stud, Percheron and Clydesdale studs and a Red Poll dairy herd which unfortunately was not being milked at the time we were there. Merino sheep were most popular as they are known for their very fine wool.

It was a very interesting tour. We met some new people as well as renewing acquaintances from

previous tours, and were treated royally everywhere we went.

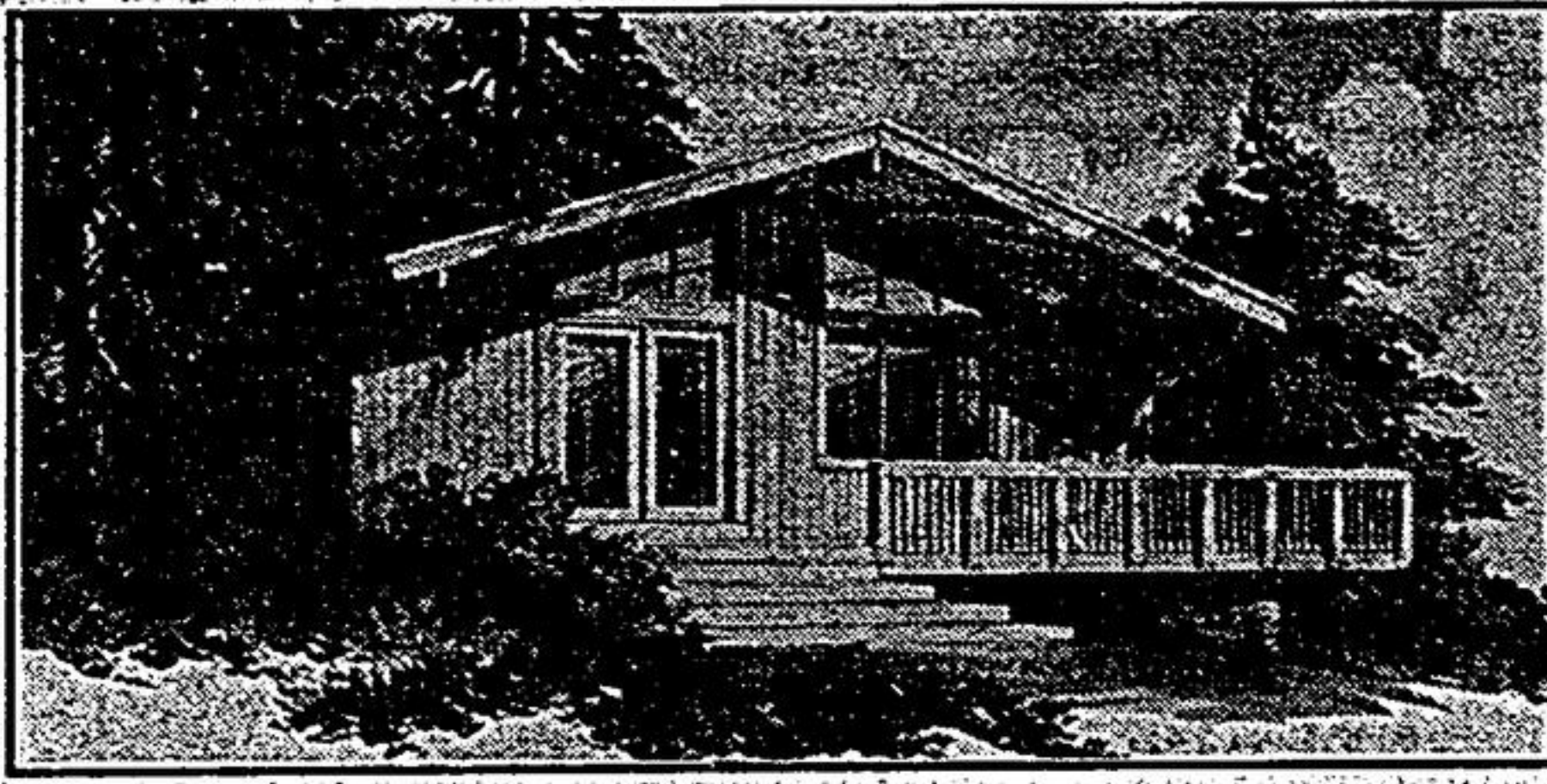
It just proves that farmers and their friends are the best people and if they were running countries, there wouldn't be any wars and we sure wouldn't be in debt like we are now.

We were glad to represent the Canadian Red Poll Cattle Association at the 7th Congress.

This was the fifth one we have been fortunate enough to be part of. The next tour will be in the United States in 1997 and we hope that in future we will see many more young people involved, both on tours and with the Red Poll Cattle Association.

Thanks again to all the Australians who made it a great tour.

## MODULAR DEMO \$63,995 MANITOULIN (including foundation!)



- Compact three bedroom vacation home, has all the necessities conveniently located on one level.
- Impressive vaulted ceiling with transom windows to take advantage of those beautiful views.
- Also makes an ideal starter home. Must be relocated in September.

For Details  
(10 am to 5 pm)  
1-800-668-5056  
(705) 357-3427



# SAVE UP TO \$10

## ON TOP QUALITY SICO STAINS



**SAVE \$8**  
FORMULA 77 DECK AND WOOD PROTECTOR  
Water repellent, mildew resistant and urethane fortified. Ideal for pressure treated wood. Comes in 4 colours.  
**19<sup>99</sup>** After Sale Price 27.99  
264 11/270/180 2.70 Litres

**SAVE \$8**  
EXTERIOR ACRYLIC FLAT LATEX  
Ideal over primed wood, masonry and metal. Resists peeling and blistering.  
**26<sup>99</sup>** After Sale Price 34.99  
266 11/270/180 2.70 Litres

**SAVE \$8**  
EXTERIOR ACRYLIC LATEX SEMI-GLOSS  
Ideal over primed wood, masonry and metal. Resists blistering and peeling. White, light base and black.  
**28<sup>99</sup>** After Sale Price 36.99  
268 11/270/180 2.70 Litres

**SAVE \$10**  
ALKYD DECK STAIN  
A resistant, waterproof, solid finish for decks, patios, furniture, fencing and pressure treated wood. Comes in 8 colours plus bases.  
**19<sup>99</sup>** After Sale Price 29.99  
275 262625 2.70 Litres

**SAVE \$9**  
EXTERIOR ALKYD WOOD PRIMER  
For new exterior wood or previously painted surfaces.  
**26<sup>99</sup>** After Sale Price 35.99  
146-110 2.70 Litres

\* Deeper colours available at slightly higher prices.  
† Compared to SICO'S After Sale Price on Paint in effect September 16, 1994.



Stouffville  
CANADIAN PROGRESS CLUB  
sponsors of

## THE STRAWBERRY FESTIVAL Baby Contest

FRIDAY, JULY 1, 1994 - 10 A.M.  
AT THE PAVILLION IN THE PARK  
PRE-REGISTRATION ONLY

1. Babies must be a resident of Whitchurch Stouffville. Area boundaries are: 404 on the West, 19th on the South & Uxbridge, Pickering Townline on the East & Davis Drive on the North.
  2. Babies born between April 1, 1993 and March 31, 1994.
  3. Registrations received no later than June 28, 1994.
  4. Registration - Contribution to the Whitchurch-Stouffville Food Bank at Baby Contest
- FOR MORE INFORMATION, PLEASE CALL 640-6518.

Baby's name: \_\_\_\_\_  
 Parents name: \_\_\_\_\_  
 Address: \_\_\_\_\_  
 Baby's date of birth: \_\_\_\_\_ Phone: \_\_\_\_\_  
 AGES AS OF JULY 1/94  
 3-5 months     6-8 months    Sex:  M  
 9-11 months     12-15 months     F

Send registration to:  
487 Elm Rd., Stouffville, Ont., L4A 2S3

**SICO** 33 EDWARD ST. STOUFFVILLE  
"CANADIAN MADE" 905-640-3440  
CANADIAN OWNED  
FOR CANADIAN CONDITIONS

**SHELL**  
Homecare  
BUILDING CENTRE