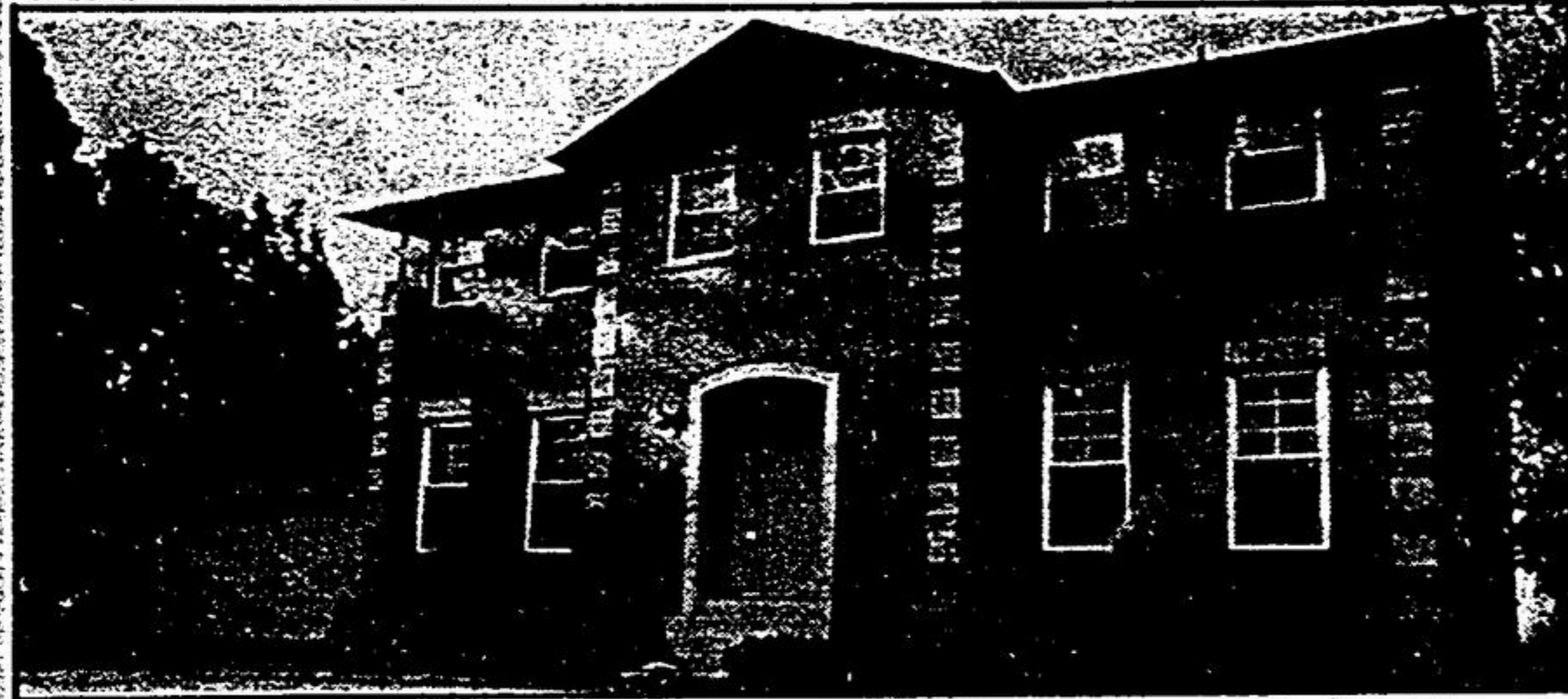


KESWICK LAKEFRONT



Custom built home on 75 x 200+ foot lot with southwest exposure. Built in 1987, 3,000+ sq. ft., with spiral staircase in front hall, office with washroom, library, dining room and living room with fireplace, kitchen with atrium eating area (glassed on three sides for a panoramic view of the lake). Second floor has four bedrooms including oversized master with walk-in closet, ensuite bathroom with shower and separate Jacuzzi room. Main bathroom includes bath with shower and separate shower stall.

House is energy efficient with 2X6 construction, high efficiency gas furnace. Large deck can accommodate 100 people includes natural gas barbeque. Safe beach, great neighbours, walk to shopping. 45 km to 404 and #7, an easy commute to Markham Asking \$525,000. Call (905) 855-1834 to view.



KEVIN DOBLE
PROPERTIES

FINAL RELEASE!!!

Construction is now underway on Stouffville's newest condominium development and we are releasing our remaining units. Quantities and model types are limited so come in today and reserve your unit.

★ Occupancy August 15, 1994 or October 15, 1994

★ Fridge and stove included in purchase

★ Purchaser chooses all interior finishings

★ \$1,000 initial deposit

★ Excellent financing terms and conditions available.



This is an opportunity that will not come again - prices are going up, interest rates are going up and today is the time to buy.

TERRACE SUITES

- 2 levels, 2 and 3 bedrooms, balcony & decks.

GARDEN SUITES

- 2 levels, 2 and 3 bedrooms, private patio

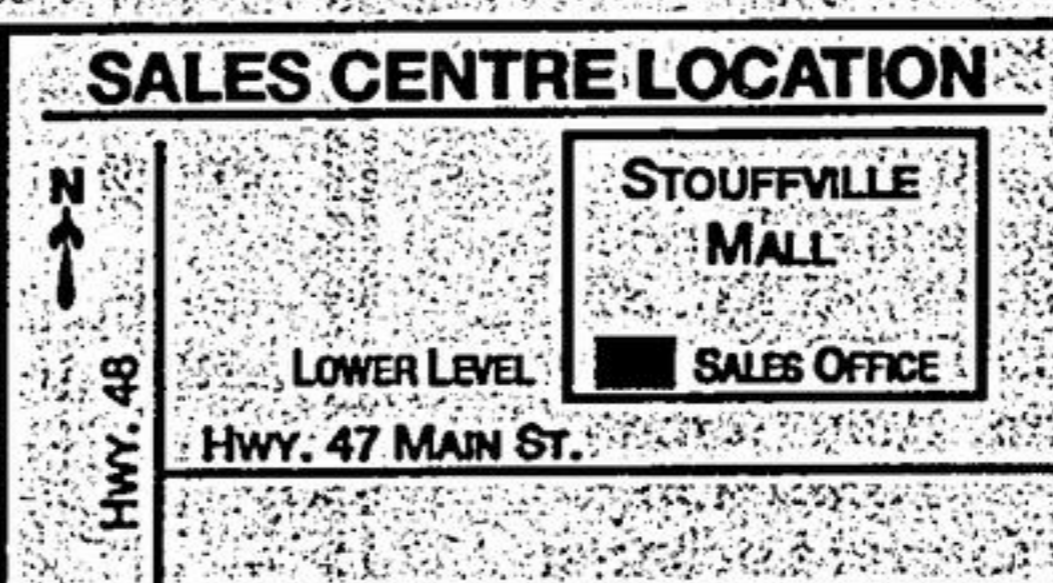
BUNGALOWS

- 1 level, 2 and 3 bedrooms, private patios

\$129⁹⁰⁰

Priced From

STOUFFVILLE MEWS



VISIT OUR SALES OFFICE TODAY

Mon., Tues., Wed., Fri.

1:00 - 7:00

Sat., Sun.

12:00 - 6:00

Listed exclusively with

Courtney Neumarch

Century 21 Armour Real Estate

Agents Welcome

(905) 642-8696



THE GREATER TORONTO HOME BUILDER'S ASSOCIATION

A good SIGN you've chosen the right builder.



FAIRWAYS

of GLENWAY
in Newmarket

An Exciting Golf Community

Golf Course Lots Available



2 Landscaped Models Now Open For Viewing

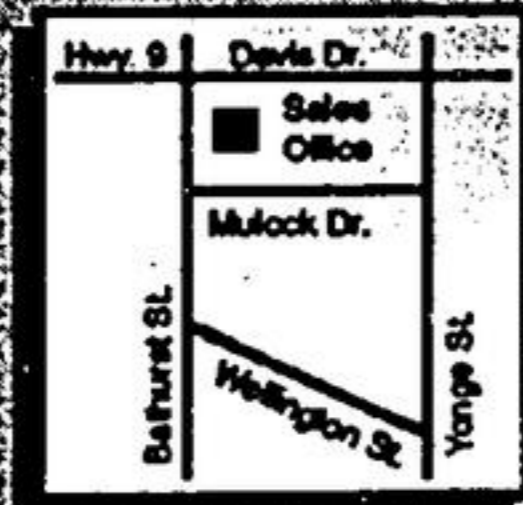
Kingsway/220 St. E. Garyloch detached home available from

\$212,900

6 UNIQUE MODELS from 1960 sq. ft.

SALES OFFICE HOURS:
Sat. & Sun. 11 am - 6 pm
Mon. - Thurs. 2 - 7 pm
Fri. by appointment.

(905) 898-4209



Pabac
Real Estate Limited

Vaya Pabac



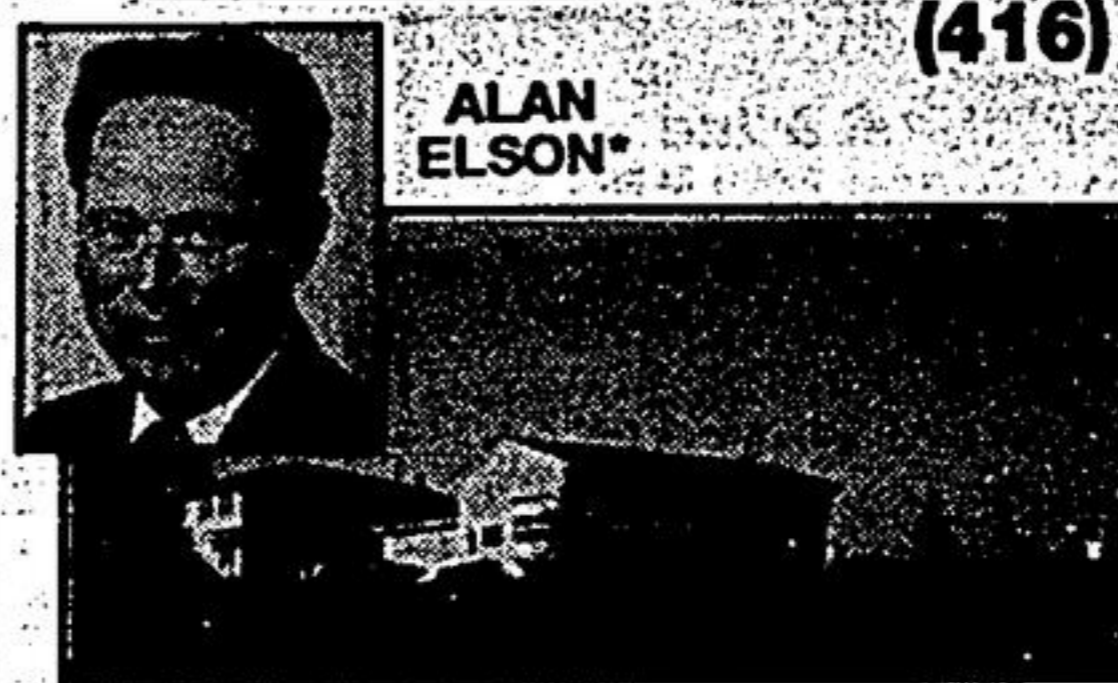
Sutton
GROUP

SUTTON GROUP - CROWN REALTY LTD.

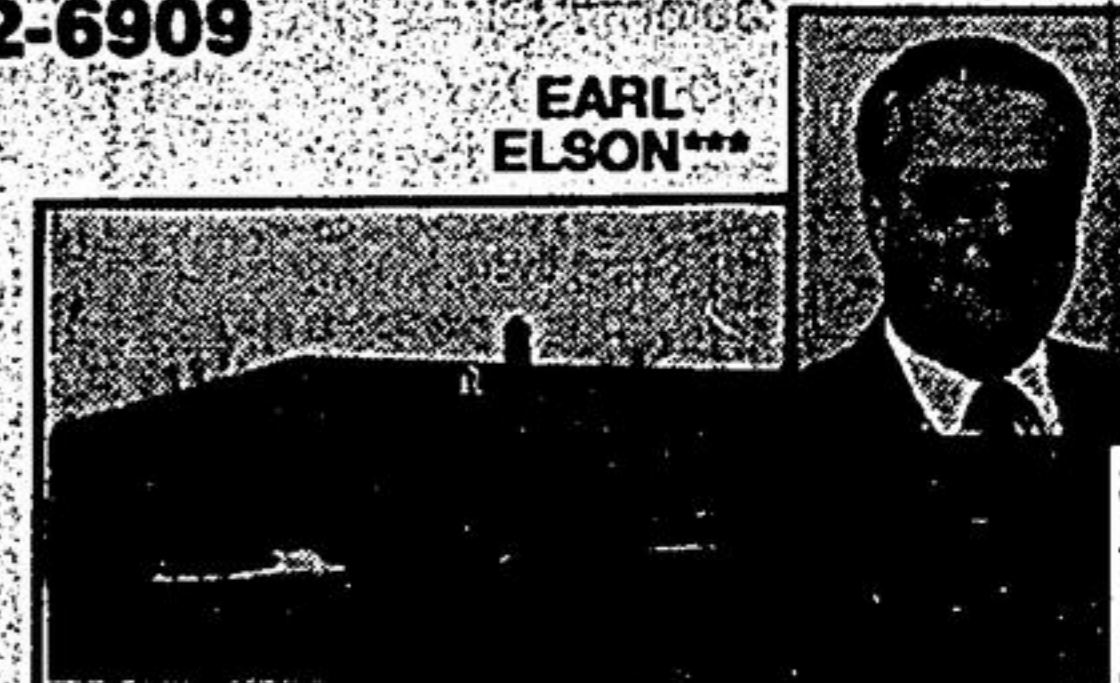
AN INDEPENDENT MEMBER BROKER

(416) 752-6909

Sutton
GROUP



ALAN ELSON



EARL ELSON

WANT MORE?

This one has it! Natural gas, its own wood supply, 3 bedroom brick home, 2 bedroom in-law apt. with sep. entrance, enough garage space for 10 cars & small horse barn, all set on a gorgeous 12 acre lot close to Stouffville. Inspect it today.

ONE OWNER

This custom built home sits on a large 125 x 150 landscaped lot. You will be pleased by its gleaming hardwood floors and super large rec room. Well worth seeing.

WINTER'S OVER?

Perhaps it is time to look at this one! 3 baths, 3 bedrooms, full basement with rec room and fireplace. Asking only \$179,900. In-town Stouffville.



TRANQUILITY

Escape to the quiet hamlet of Claremont, approx. 15 mins. from Markham, to this 6 bedroom Century reproduction on its own 1 acre with stream. No massive subdivisions here!

* Sales Representative *** Broker

(416) 752-6909