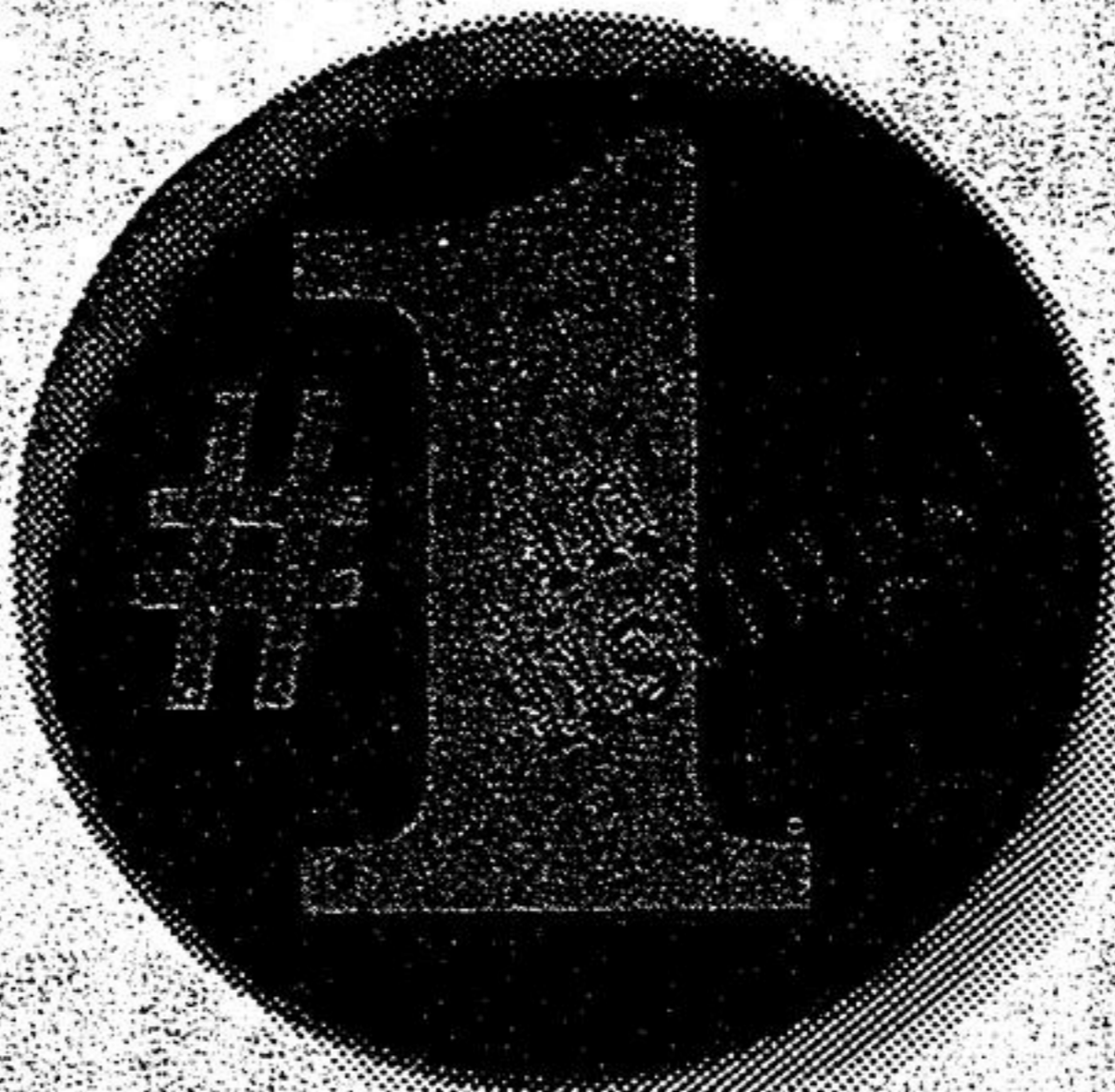


COLDWELL BANKER - Expect the best™ COLDWELL BANKER - Expect the best™ COLDWELL BANKER - Expect the best™

CALL COLDWELL BANKER



WHO CARES?



FIRST TIME BUYERS COME SEE!

Located close to Sutton and offers huge country lot. Renovated, 3 bdrm. home, close to Hwy 48 for easy commuting. Great start or retirement asking \$128,900 call Pat Zwaal* 477-2223.



MOVE UP TO AURORA

Hot new listing in brand new neighbourhood. Close to schools. Great young family home, 3 bdrm., family room with fireplace, spacious premium lot \$225,900. Call Pat Zwaal* 477-2223.



Suzanna*
Maya

BIGGER HOMES BIGGER VALUES

New homes priced to suit every budget! Built with exceptional quality definitely the custom look. GST included call today for plans & prices. Suzanna** / Luls* Maya 477-2223.



CLOSING OUT ESTATE! LAST 4 HOMES!

Four models to choose from! Up to 2520 sq. ft. Priced to \$203,900 Suzanna**/Luls* Maya 477-2223.



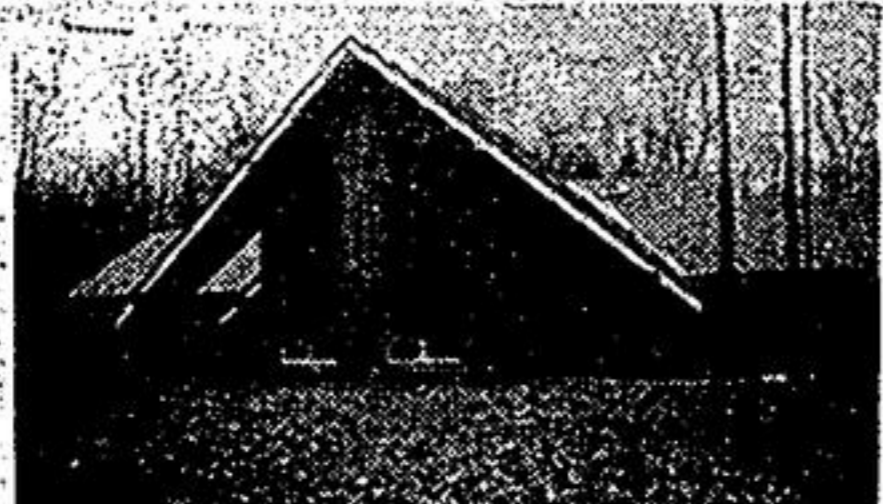
DAVIS DRIVE

GREAT VALUE \$195,000
* 3+1 bungalow/single garage
* on 1.2 acres
* finished rec. room & spa room
* Debbi Jefferson*, 642-2224.



FABULOUS LINK MARKHAM

Shows like a "10". This lovely 3 bdrm. home offers main fl. fam. rm., finished walkout bsmnt., decorated and landscaped. Move right in for only \$239,900 Call Pat Zwaal* 477-2223.



TREES-TREES PRIVACY!

A real contemporary beauty situated on 4+ acres of Maple bush. Approx. 4800 sq. ft. of custom unique design. Cathedral ceilings; magnificent residence asking only \$459,900 Call Pat Zwaal* 477-2223.



REDUCED - NOW \$675,000 OPEN HOUSE SUN. 2-4

Imagine the lifestyle of royalty @ a cut rate price. Luxurious living in this unique 3128 sq. ft. home. Gaze out at the stars over the spectacular Toronto skyline, Walden Pond from your terrace in the sky. Please join me at 610 Bullock (W. of McCowan-N. off Hwy 7) Suite 1511. Susan Gunn* 477-2223 or 940-3631.



JUST LISTED

A must to see: 12 acres; 5 mins. to Stouffville; fieldstone 1/2, sep. d/r, eat-in kit. with plenty of Oak cupboards, main floor family room. Downstairs: 2 bdrm. apt. with sep. ent., three car garage, plus shop with truck bay entrance which will accommodate an additional 7 cars. \$329,000 Call Earl Elson** or Alan Elson* 642-2224 or 477-2223.



15 MIN TO MARKHAM

6 bedrooms, main floor family room, lots of Oak kit. cupboards, large Florida eating area plus formal dining room. Walkout basement. Super home in quiet hamlet. Asking only \$324,900. Call Earl Elson** or Alan Elson* 642-2224 or 477-2223.

LEE REAL ESTATE

4460 Hwy. #7, Unionville

477-2223/642-2224

Serving Unionville, Markham, Stouffville

SOLD

COLDWELL BANKER

Expect the best™