

REAL ESTATE PULLOUT

REAL ESTATE, NOVEMBER 24, 1993

OPEN HOUSE SUN., NOV. 28th, 2 - 4 P.M.



Re/Max Scugog Realty Ltd.

31 BOLTON DRIVE, UXBRIDGE
Desirable Quaker Village - A sought after development centred around a 22 acre park with pond. Victorian-style homes - large lots - we feature a 2250 sq. ft. centre hall plan, whirlpool in master ensuite - front porch - view of pond. Listed at \$232,900.

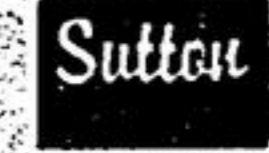
Lee Weldon,
Associate Broker
510-1284



BEST PRICE IN TOWN
Just east of Stouffville - 2800 sq. ft., 4 bdrms., 3 baths - Ceramics, hwd. flrs., oak kit. - 4 appliances included - Central air, central vac, alarm system, intercom - Approx. 1 acre lot. Only \$279,000

FIRST-TIME BUYER
Beautiful older home in country village - Toronto Calling exchange - Hardwood floors throughout - Hardwood trim & doors - 10 ft. ceilings - Double car garage

For more info, call Grace Jorgensen, Sales Representative
Sutton Group Classic Realty Inc.
350-3990 or 686-5153



PORT PERRY PLAZA
(416) 985-9777 FAX 985-9161

Member Oshawa & District Real Estate Board
Member Lindsay & District Real Estate Board
CALL TOLL FREE 1-800-267-6177

OPEN HOUSES SUNDAY NOVEMBER 28, 1993 1:00 - 3:30 PM



CUSTOM DESIGN

And built by Corvini Construction. Village of Columbus. 3800 sq. ft., 5 bdrm., eat-in kit., fam. rm. with f/p, mn. flr. laundry, den, maid's living quarters, economical gas heating, cent. air and vac. 3 car garage on 1.5 acre lot. Asking \$358,800. Includes GST. Dir: North of Oshawa, on Simcoe St. to Steepleview Cr., Columbus. Your Host: Chuck Preston*.



CUSTOM BUILT

4 bdrm. home in the hamlet of Epsom. Steps to public school. Large master with 5 pc. ensuite including jacuzzi tub. Tastefully decorated, mn. flr. fam. rm. with f/p, hwd. flrs. Come and see country living for yourself! Reduced to \$274,000. Dir: Reg. Rd. #8, 2 miles west of Hwy. #12 to Village of Epsom. Your Host: Al Bertrand*.



ROBINGLADE ESTATES

Water access, updated 3 bdrm. sidesplit, kit. has w/o to deck, formal din. area, family rm. with f/p, large mature lot, nearly one acre with fruit trees. Oil efficient heating! Excellent view of river with access to Lake Scugog. Priced right! Asking \$159,900. Dir: Port Perry Durham Rd. #2 north of Port Perry, 4 miles to Robinglade Estates. Your Host: Chuck Willes*.



JACOBSEN BUILT

3 bedroom bungalow, eat-in kitchen with w/o to deck. Formal dining area. Fin. rec room with fireplace. Hot tub room with bar. W/o to garden and patio. Greenbelt lot with bush and stream. Truly a family home, everything for the gardener. Large lot with potential to increase size of lot. Priced to this market, asking \$194,900. Dir: Hwy. #12 north of Greenbank, 28 Jacobsen Blvd., Saintfield. Your Host: Judi Hewitt*.



ROBINGLADE ESTATES

Access to Lake Scugog, 4 bdrm. raised bung. Large oak eat-in kit., fam. rm. with airtight. Dining rm. with walk-out to deck, verandah and pool. 2 baths., large sunroom - 20' x 20' 1 acre lot \$229,000. Dir: Port Perry Durham Rd. #2 north of Port Perry, 4 miles to Robinglade Estates. Your Host: Ron Smith*.

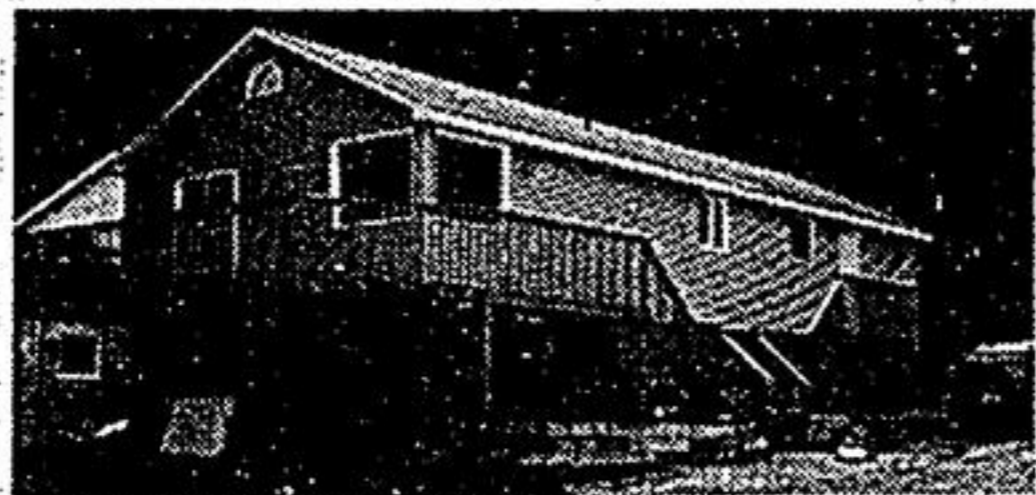


JANETVILLE

3+2 bdrm. brick bung. with finished bsmt. Eat-in kitchen has oak cabinets. Well-treed 1/2 acre lot backs on farm land. A must to see - only \$119,900. Dir: Main St. in Janetville to Manvers Dr. - follow signs. Your Host: Bill Rae*.



APPLE VALLEY, PORT PERRY
Quality 3 bedroom bungalow. Large oak kitchen, main floor family room with gas f/p. Master ensuite, mn. flr. laundry. Finished rec room. 2200 sq. ft. of finished home. Asking \$199,500. Dir: Lakeview Dr., Apple Valley, Port Perry. Your Host: Yvonne Burnett*.



WATERFRONT HOME

Scugog Island, 2 bdrm., 1200 sq. ft. bungalow with full walk-out basement facing lake. Maintenance-free vinyl exterior with alum. soffit and eaves, new condition, completely rebuilt inside and out in the last few months. Priced at \$169,900. Dir: Hwy. #7A east of Port Perry to Isaxnd Rd. (Durham Dr. #7) north to Pine Point Rd. turn east and follow signs. Your Host: Cliff Crowell*.



Find it in THE REAL ESTATE SECTION



An international network of independent member brokers
RE/MAX scugog realty limited
114 QUEEN STREET, PORT PERRY
Independent member broker
985-4427 TOR. LINE: 428-1332
184 OFFICES THROUGHOUT ONTARIO



NEW HOMES GST INCLUDED
To be built - 2 1200 sq. ft. raised bungalows, 2 car att. garage on lge. rural lots in small comm. Comfortable 20 min. drive N. of Port Perry. \$144,900. Mark Puckrin*.



SCUGOG ISLAND - \$249,900
Less than 10 mins. from Port Perry. Quality 3+1 bdrm., 3 baths, gourmet kit., vaulted ceilings, mostly fin. bsmt., 3 car garage, large lot. Vendor wants it sold! Mark Puckrin*, 24 hr. pager.



THE ONE YOU'VE WAITED FOR
Quality custom home, 4 bdrms., 3 baths, 2 f/p, mn. flr. fam. & ldy. rms., 1 ac. with excell. country view. Loc. 15 mins. north of Port Perry. \$223,900. Mark Puckrin*, 24 hr. pager.



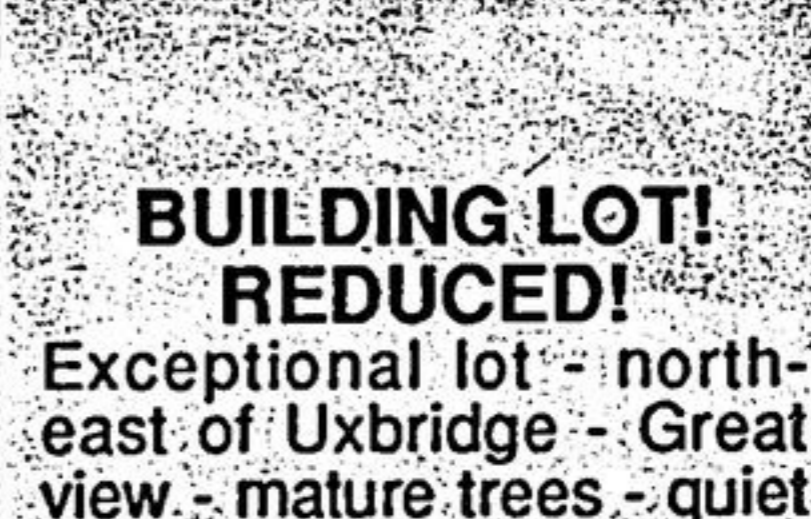
QUALITY BEEF FARM! \$349,000!
149 productive acres - good barns w/fan air/ex - system, pole barn, large mach. shed & insul. workshop - 6 bdrm. renovated home - stream - a gentleman's farm. Valerie Eden*, 905-985-4427, 24 hr. pager.



BELIEVE IT OR NOT! \$139,900
Approx. 2500 sq. ft. living area - 3 yrs. old - in-law apt. needs a little TLC. Ceramic & wood flrs., quality built - w/o to deck! Valerie Eden*, 905-985-4427, 24 hr. pager.



OVER-SIZED HEDGE LOT!
Surrounds this 3 bdrm. sidesplit 2 car garage - new wood flr., upgraded bath., leaded drs., front ent. hall to l.r., exceptional decor! \$149,900! Valerie Eden*, 24 hr. 905-985-4127.



BUILDING LOT! REDUCED!
Exceptional lot - north-east of Uxbridge - Great view - mature trees - quiet road! Permits avail. Only \$48,000. Valerie Eden*, 905-985-4427, 24 hr. pager.



NEW LISTING - \$139,000
Ideal starter or retirement home on private 1/2 ac. lot near Blackstock. Features incl. 3 bdrm., 5 appls., airtight stove bar, 4 man spa & 4th bdrm. in bsmt. Lynda Kendry*, 985-4427.



WATERFRONT EXECUTIVE PORT PERRY
Custom built 4 bdrm., spacious home designed for entertaining. Unique fam. rm. with 3 walls of glass for a fantastic view. Rec. rooms feature heated indoor pool, sauna, fireplace, wet bar, both with w/os to patio. Western exposure, enjoy the beautiful sunsets, lge. treed lot, sandy shoreline, boat house, lge. deck with bar at the lake. Quality home, wonderful loc. Priced at \$395,000. Cecilia Thaefer*, 985-4427, 24 hr. pager.

To place your real estate ad call
Joan Marshman, 640-2100
or Dorothy Young, 294-2200.
Economist & Sun / Tribune