

# ST Batching battle rages on

**From Page 1)**  
the town pay all St. Mary's legal costs, which are expected to be about \$50,000, sources said.

The town has already spent about \$400,000 on consultant fees and studies and another \$75,000 in legal costs to backup its plan to restrict ready mix plants on extractive lands across the municipality - a battle which began in 1989.

The town currently has an

interim control bylaw in place that prohibits ready-mix operations on its 14 operating gravel pits.

The town's experts say batching would seriously harm the town's water quality and quantity, but angry aggregate miners say that's not true.

Mayor Fran Sainsbury has said the harm caused to the town's wells could ring in as high as \$10 million if batching is an allowed use.

But the St. Mary's group has said the town's water problems are caused because of its own deteriorating, outdated wells.

In light of the town's bylaw, taxpayers now face expenses of multiple Ontario Municipal Board hearings expected to come up in the next few years which will likely be filed by angry aggregate producers.

These hearing could cost taxpayers another \$200,000 to \$300,000, sources say.

## Lebovic gets green light to build

**From Page 1)**

that comes before council.

"What's wrong with a good public relations gesture?" Prentice said.

Prentice said the process, as it stands, makes public hearings a mere formality where people are led to believe they are part of the process, and that their concerns will be considered.

In reality, he said, council makes the final decisions without letting the public know when the vote will take place.

Prentice is referring to Lebovic's 25-per-cent provincially mandated affordable housing plan, meaning 25 of the 100 homes to be built on the 40-acre parcel would be constructed on 35-foot lots.

The developer was allotted sewage capacity earlier this year to develop the rural lands. Council's decision this week changes the land use designation to urban residential, giving Lebovic the green light to build.

All the details, including zoning and site plan specifics will be dealt with at the next stage, officials said.

"The process is what I'm frustrated with. One day there is a public meeting and the next minute, poof, a recommendation to amend the official plan is on the agenda," Prentice said.

While Prentice called for an evening meeting to allow residents their say, several officials said they want the same special treatment when develop-

ments come up in their wards.

"As the chairman of planning I would like to make it clear this latest information doesn't require public input," said Ward 3 councillor Nick Tatone.

"We shouldn't be deferring this any further: follow through discussions will take place when the time comes. What about all the other wards,?" Tatone said.

"If you want special treatment in your ward then fight for your people," Prentice said.

"Look, we need good rules and good laws that everyone can abide by, or I don't want to be a part of this team," Tatone said.

Most officials agreed Lebovic's reputation and prior developments have been of high quality and have upheld all proper engineering and planning specifications.

Ward 4 councillor Cliff Dunkeld said the word "affordable" scares people away, and added citizens are "scaling down" today and want smaller lots to groom and maintain, including seniors and the disabled.

Officials approved the amendment, which includes a stipulation that "concerns of residents be addressed prior to final approval of the proposed zoning changes."

- Tracy Kibble

## Province wants study

**TRACY KIBBLE  
Staff Reporter**

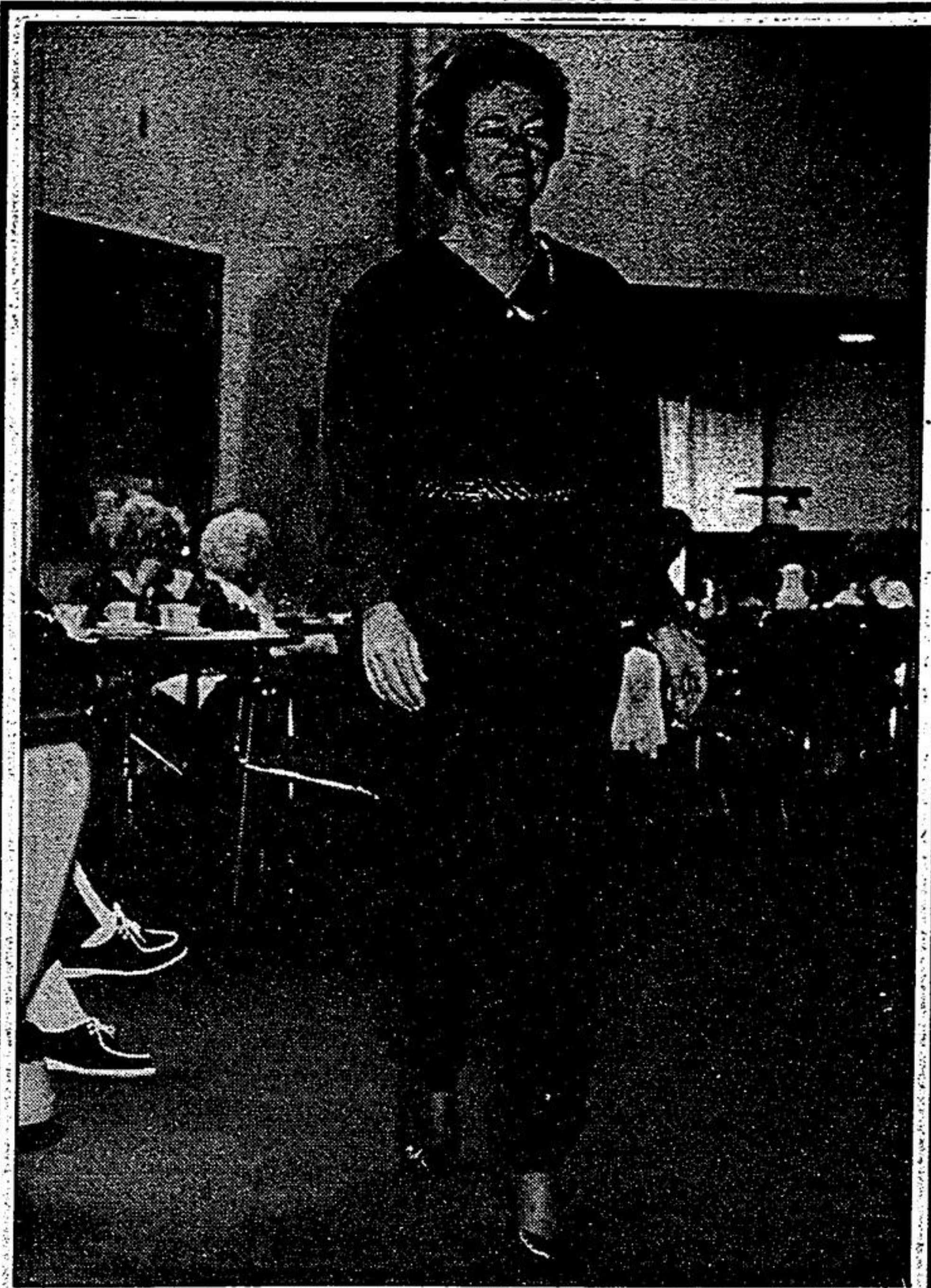
The province is backing York Region's stand that a massive settlement capability study be undertaken before Whitchurch-Stouffville can see its long-awaited Gormley industrial park come to fruition. In a lengthy letter to council this week, director of planning administration for the Ministry of Municipal Affairs, Diana Jardine told officials a "comprehensive" study must be undertaken "prior to development occurring."

Jardine said the province had considered that the Gormley Industrial Park (referred to as OPA88) plan would be allowed to proceed in advance of the study if each developer participates in an "equitable fashion" in the study.

But York Region has insisted a complete settlement capability study be undertaken "before further consideration can be given to OPA88." The region has told the province that the study is essential to determine whether privately serviced development can be supported "without causing long-term contamination to the ground and surface water in the area," Jardine's letter states.

She reminded officials that it's the "traditional position" of most environmental provincial agencies to also ensure "fairness in development interests as well as ensuring that development occurs in an environmentally acceptable manner."

Stouffville politicians received the letter.



*In step with fashion*

Model Fran shows off the latest designs at the Clothes Call fashion show at Parkview Village last week.

## Town searches for tree

The Town of Whitchurch-Stouffville needs a Christmas tree this year and hasn't yet had anyone come forward with donations.

Each year the town erects a Christmas tree in front of the clock tower in the town square and decorates it for all to enjoy during the season. People who may have large trees available for donation are asked to contact the town's public works

department at 640-1900.

## La Leche League meets Monday

Pregnant and nursing moms who needs assistance, guidance or support about breast-feeding are encouraged to attend a local La Leche League gathering on Mon., Nov. 15 at 7:15 p.m. For more information call Karen at 642-2600.

## Vaughan targeted for York dump

**JULIE CASPERSEN  
Staff Reporter**

The team looking for a suitable landfill in York Region has decided a site in Vaughan has the best chance of passing an environmental assessment.

Vehement Vaughan residents packed into the Woodbridge restaurant where the Interim Waste Authority formally revealed the location of three Metro area dumps chosen after a \$35 million study of 57 sites in York, Durham and Peel regions.

The York Region dump will be the largest of the three, taking up 568 acres and holding up to 40 million tonnes of trash.

The residents were ready for a fight, demanding entry into the media briefing room but held back by police and security demanding identification. When finally allowed into the room, the announcement was drowned out by chants of "not fair" and "what about our children" by people obviously prepared for the news.

Politicians took turns grandstanding, voicing disdain for the provincial New Democrat government that started the

process and enforced a mandate of keeping trash in the Metro area and not seeking alternatives like incineration or shipping garbage to Northern Ontario.

Pickering Mayor Wayne Arthurs said he will continue to fight the selection of the Durham site four-and-a-half kilometres from the Markham border.

The Durham dump is cra-

dled in the area where West Duffin's Creek meets East Duffin's Creek, a concern for Save the Rouge Valley System, according to SRVS president Stephen Marshall.

IWA General Manager Erv McIntyre said yesterday unless "something exceedingly strange" occurs in the assessment process the Vaughan site will be filling with garbage as soon as 1995.

## Ancheril off LSRCA

Ward 5 councillor Bob Ancheril has resigned from the Lake Simcoe and Region Conservation Authority (LSRCA) after serving as the town's representative for two years.

Ancheril announced his resignation last week after stating several weeks ago that he found it difficult to attend regular LSRCA meetings since they were switched from evening to daytime sessions.

Ancheril will be replaced by Ward 1 councillor Ivanka Bradley, whose voice will represent the community's environmental concerns, recommendations and suggestions until at least next year's municipal election.

Ancheril had said last September that the town was "wasting its time" on the board and carries no influence.

The town had inquired about the board holding its meetings during the evening but an LSRCA letter this week stated most members preferred the daytime sessions.



ANCHERIL



BRADLEY

**KIDS  
EARN  
EXTRA  
MONEY  
BECOME A  
CARRIER  
TODAY**

Call:  
**640-2100**  
(Stouffville)

**Attention Flyer Advertisers**  
We can deliver your flyers for as little as 4¢ a piece. So far this year we have delivered 26,837,520 flyers door-to-door in Markham, Unionville, Milliken, Stouffville, Uxbridge, Clarendon, Dickson Hill, Locust Hill, Gormley, Goodwood, Victoria Square, Brougham, Hagerman Corners, Box Grove, Cedar Grove, Buttonville, Sandford, Goodwood, Leaskdale, Greenbank, Udon, Sunderland, Zephyr, Ashburn, Cannington, and all adjacent rural route areas.  
We can deliver your flyers on the day you want to the area you want - any quantity from 5,000 to 46,000.  
For Advertising and Distribution Inquiries call:  
Retail Advertising at 640-2100  
Classified Advertising at 640-2100  
Distribution Inquiries at 640-2100  
or Fax your inquiries to: 640-5477

**INSERTS FOR SAT. NOV. 13, 1993**

Lansing Bullfall  
Loblaws  
Eatons  
Consumers Dist.  
A & P  
Dominion  
Stouffville IGA  
Selected Areas Only