

**Optometrist**  
**DR. RONALD S. McMULLEN**  
*Providing you and your family with personal, professional eye and vision care.*

- Examinations • Prescription Eyewear • Contact Lenses
- Evening and Saturday Appointments Available

**852-3191**

Testa Professional Building, Suite 307, Uxbridge






This year's Oktoberfest, organized by the Whitchurch-Stouffville Chamber of Commerce was a great success with improved turnout over the 1992 event.

# Oktoberfest winners announced

The following were winners at last week's Oktoberfest, which took place at Stouffville Country Flea Market:

Melissa Purvis of Sunderland, Doug Joyce of Stouffville and Ivan Barron of Toronto all won special getaway trips; Larry and Carrie Rogalski of Port Perry won the Friday Night Polka Contest; Kathleen Wilson-Housser of Goodwood and Marc Westerterp of Stouffville won Saturday's Polka Contest; Henry Betsch of Stouffville and Karen Gregg of Uxbridge were winners in the Sausage Eating Contest.

Hannelore Haag of Don Mills was named Miss Oktoberfest. The turnout was a considerable improvement on last year and local merchants and businesses donated prizes and other giveaways to attract a wider audience.

Oktoberfest was sponsored by the Whitchurch-Stouffville Chamber of Commerce, who expressed thanks to the Stouffville Country Market for the use of its facilities, to the local merchants who contributed prizes and to the many others who helped make the weekend a success.

# Town helps Oktoberfest

Whitchurch-Stouffville politicians spent \$450 to promote the community's Oktoberfest celebrations which took place at the Country Flea Market last weekend, officials decided last week.

The town voted to chip in to promote the event and buy one radio advertising spot on two stations. "We are doing this as a team and haven't yet spent any money at all promoting the town," said Ward 5 councillor Bob Ancheril.

The event was advertised on 590 AM and CISS FM 92.5. Officials recently exempted the flea market of its 11 p.m. noise bylaw to allow the 'big tent' entertainment until 1 a.m. Critics say town politicians are playing favorites with the flea market by exempting the establishment from its 11 p.m. noise bylaw, when only two months ago, the council refused to make the same concession for Chariots Restaurant, which is located next door to the flea market.

Chariots was forced to cancel its outdoor concert plans.

## YOUR LOCAL CHEVROLET • GEO • OLDSMOBILE DEALERS

# MOVE UP TO LUXURY AT A PRICE YOU CAN LIVE WITH.

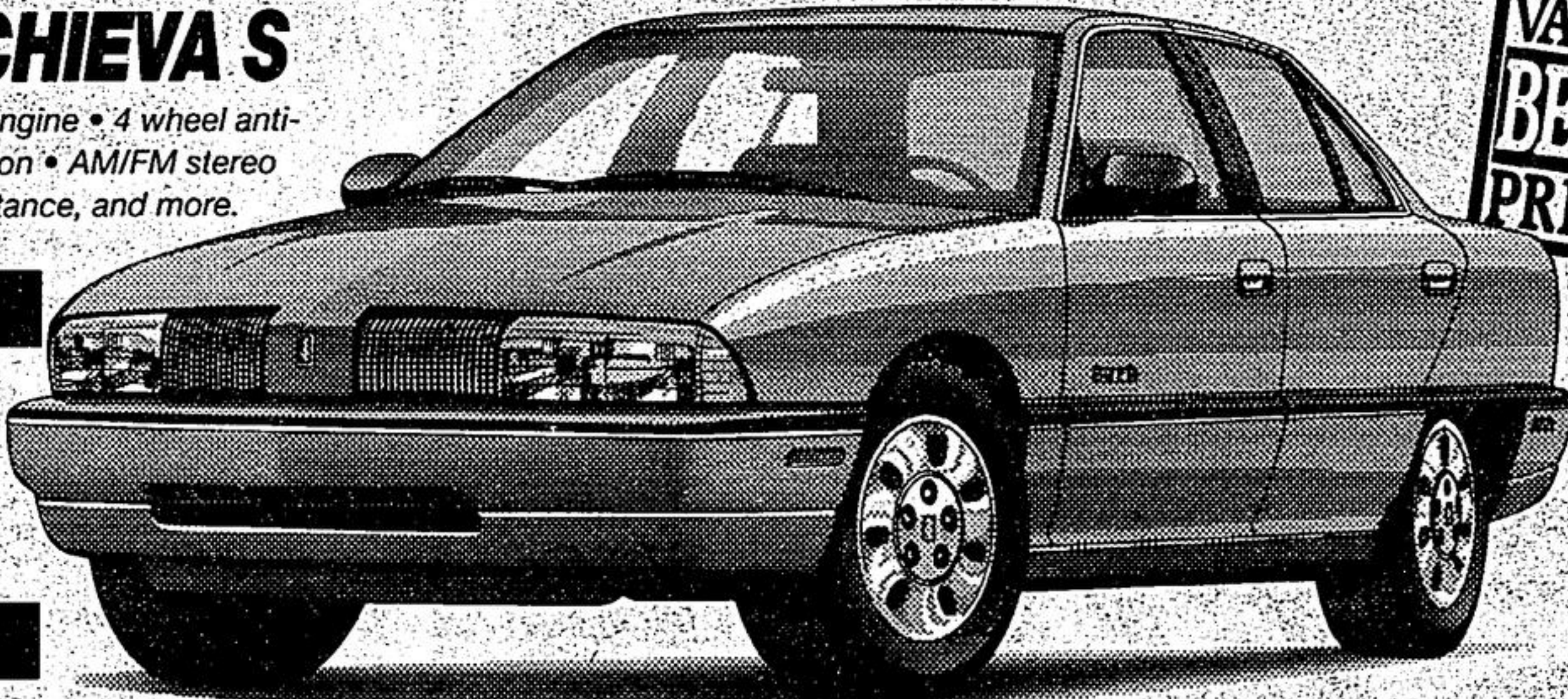
### 1994 OLDSMOBILE ACHIEVA S

Oldsmobile Achieva S comes equipped with a 2.3L engine • 4 wheel anti-lock brakes • Air conditioning • Automatic transmission • AM/FM stereo cassette • Tinted windows • 24 hour Roadside Assistance, and more.

SMARTLEASE NOW

**\$269**

PER MONTH FOR 36 MONTHS\*



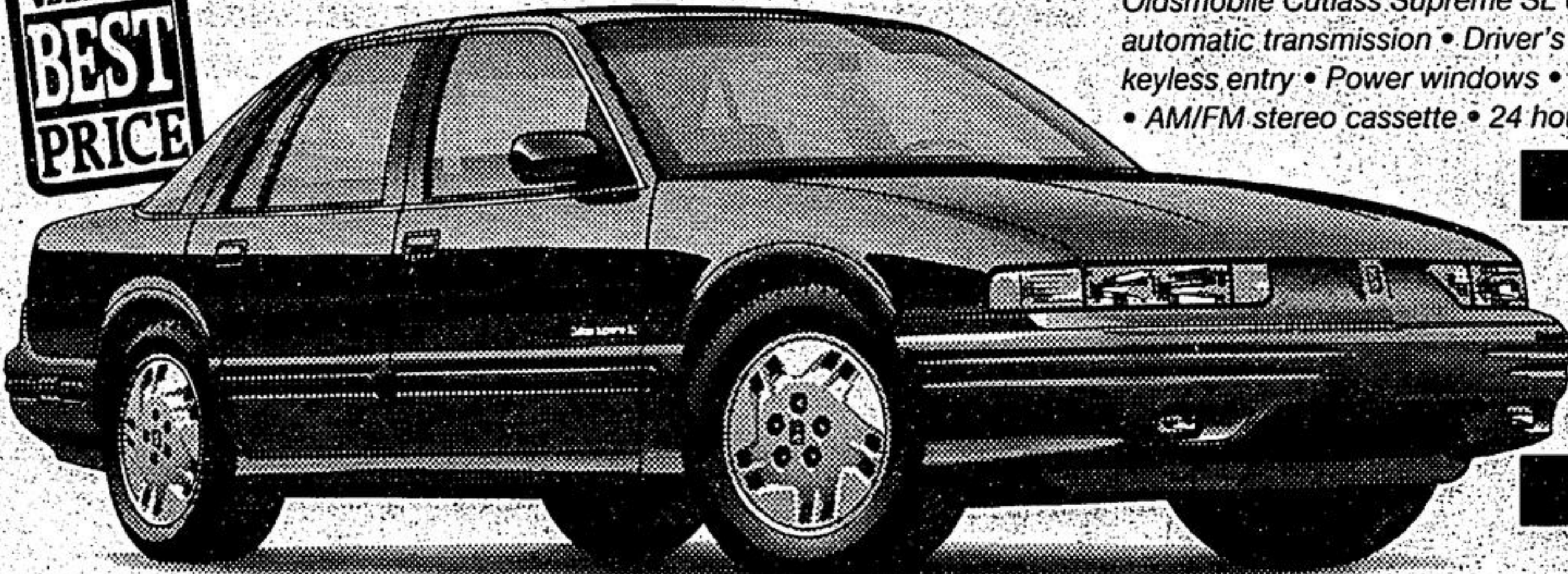
### 1994 OLDSMOBILE CUTLASS SUPREME SL

Oldsmobile Cutlass Supreme SL comes equipped with a 3.1L V6 engine • 4 speed automatic transmission • Driver's side air bag • Sport appearance package • Remote keyless entry • Power windows • Air conditioning • Standard 4 wheel anti-lock brakes • AM/FM stereo cassette • 24 hour Roadside Assistance, and more.

SMARTLEASE NOW

**\$339**

PER MONTH FOR 36 MONTHS\*



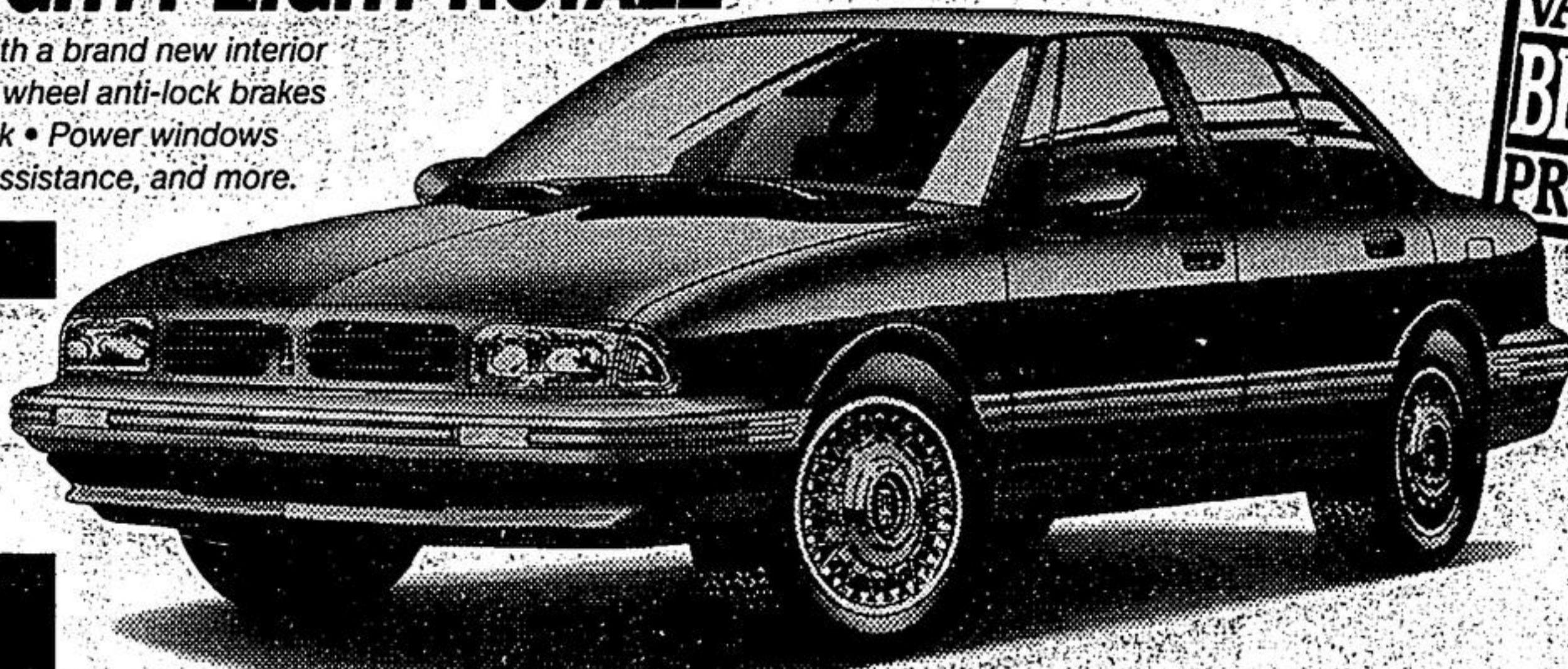
### 1994 OLDSMOBILE EIGHTY EIGHT ROYALE

Oldsmobile Eighty Eight Royale comes equipped with a brand new interior • 3.8L engine • 4 speed automatic transmission • 4 wheel anti-lock brakes • Remote Keyless entry • Power seats • Power trunk • Power windows • Power locks • Dual air bags • 24 hour Roadside Assistance, and more.

SMARTLEASE NOW

**\$399**

PER MONTH FOR 36 MONTHS\* OR PURCHASE FOR \$23,598\*



	 <p>Special discounts, available through Petro Canada retailers for SmartLease customers.</p>	<p>THE GM 3-YEAR/60,000 KM* NO DEDUCTIBLE TOTAL WARRANTY* WHICHEVER COMES FIRST</p>	 <p>Available 24 hours a day. Professional help is only a phone call away. 365 days a year.*</p>	 <p>THE NEW FINANCIAL VEHICLE. Earn 5% on the purchase of a new GM car or truck. Applications available at your nearest dealer or TD Bank branch. *Used under licence. The GM card is a trademark of General Motors Corporation.</p>
---	--	---	--	---

## YOUR LOCAL CHEVROLET • GEO • OLDSMOBILE DEALERS

*Home of everyday value pricing!*



\*Based on 36 month leases for Achieva S and Cutlass Supreme SL respectively, equipped as described. Total down payments of 3,025.19 and \$3,713.15 are required. Security deposits of \$325 and \$400 are included in total down payment. Freight (\$595 and \$695) included in lease price. Other terms also available. Offers apply to qualified retail customers only. Some mileage conditions apply. License, insurance and taxes not included. Offers apply to 1994 new or demonstrator models. Dealer may lease for less. These limited time offers may not be combined with any other offers. Vehicles may not be exactly as shown. See Dealer for details. \*Based on a 36 month lease for Eighty Eight Royale equipped as described. Total down payment of \$3,904.29 is required. Security deposit of \$475 is included in total down payment. Freight (\$795) included in lease price. Some mileage conditions apply. Price for Eighty Eight Royale equipped as described. Freight (\$795) not included in selling price. \*License, insurance and taxes not included. Offers apply to 1994 new or demonstrator models. Dealer may sell/lease for less. Offer applies to qualified retail customers only. This limited time offer may not be combined or used with any other offer. Dealer trade or factory order may be required. See Dealer for details. \*Some charges may apply. See Dealer for details.



The Most Famous Basket in the World

*THIS IS A*  
**Welcome Wagon**  
 COMMUNITY

Let us welcome you!  
 STOUFFVILLE UXBIDGE  
 640-3521 640-5141 852-4665 852-7118

